



# MACRON DYNAMICS, INC.

PRODUCT  
Datasheet

## SPECIFICATIONS

Load Rating	0-1150lbs
Ultimate Tensile Strength	4600lbs
Temperature Range	-20 C to +70 C (-4 F to +158 F)
Shipping Weight	0.75 lbs + 0.16lb/ft of belt
Belt Pitch	10mm

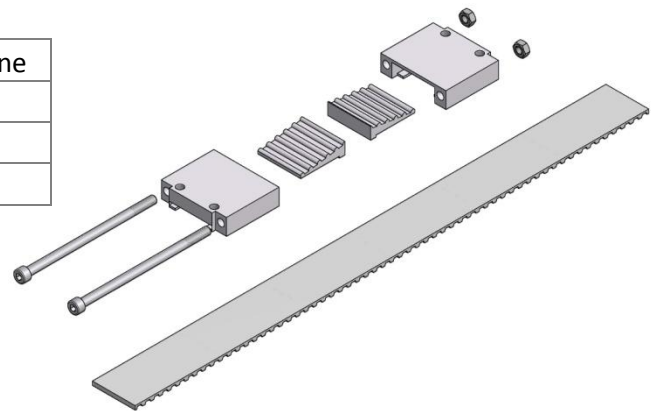
## Drive Belt Kit

DBK-EA-\_\_

Insert length per meter.  
Ex. 5 meters = DBK-EA-05

## MATERIALS

Belt	Steel Reinforced Polyurethane
Belt Wedge and Tension Block	Zinc Aluminum Alloy
Screws	Steel
Lock Nut	Steel

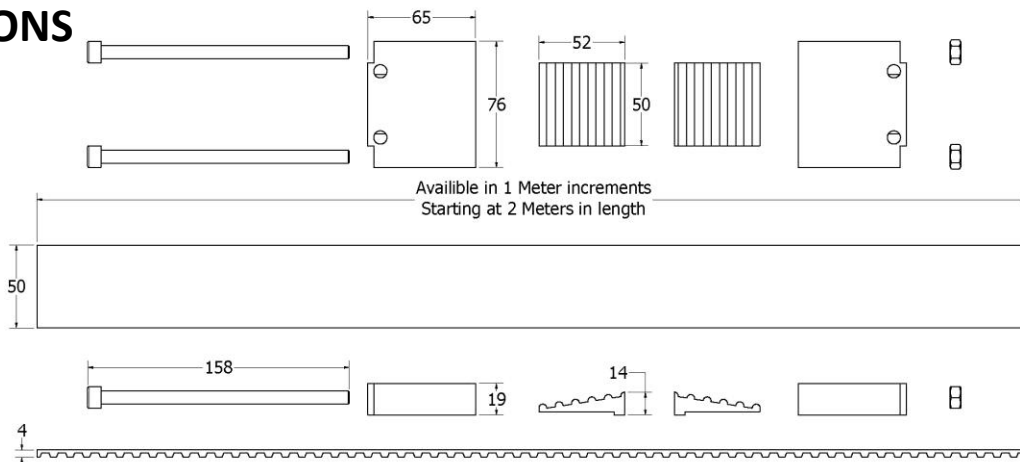


## PARTS BREAKDOWN

Description	Qty/Kit
Drive Belt	1
Tension Block	2
Belt Wedge	2
M8 Socket Head Cap Screw	2
M8 Lock Nut	2

$$\text{BELT LENGTH} = (\text{BEAM LENGTH} \times 2) + .3\text{m}$$

## DIMENSIONS





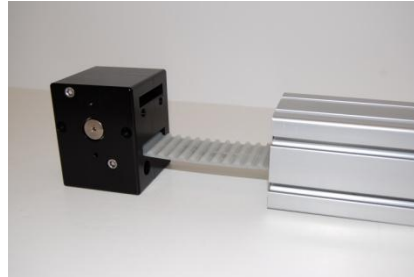
# MACRON DYNAMICS, INC.

PRODUCT  
Datasheet

## Belt Installation Instructions



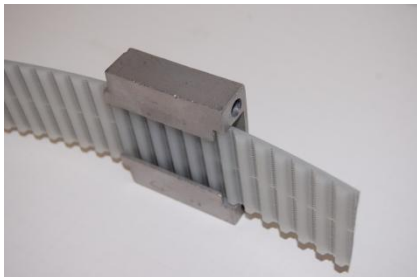
The tools you will need include a torque wrench (lb. in.), tensioning tool, tin snips, M6 allen wrench, and a flathead screwdriver.



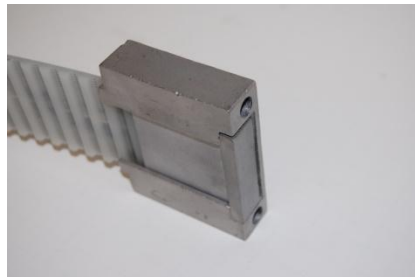
Insert the belt into the slot closest to the bottom. Push the belt in till it comes out the top.



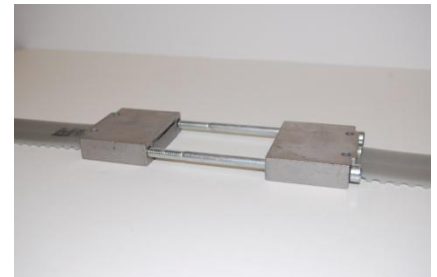
Once the belt becomes exposed, pull it till the slack in the belt comes tight.



Slide the belt through both of the tension blocks so that the taps are both on top. Then place both wedges at the end of the belt.



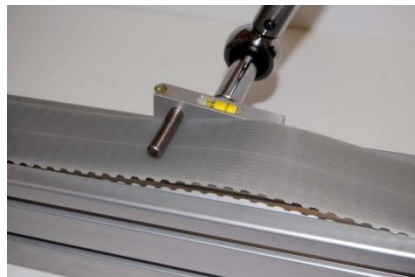
Pull the belt to tighten the wedge and the belt within the tension block.



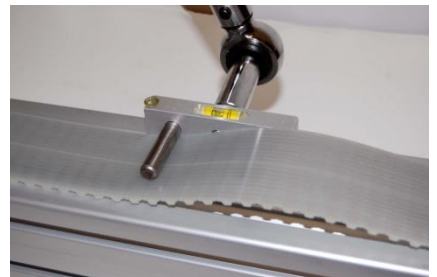
Place the bolts through the holes at the end of the tension block and into the other block. Be sure to put



Screw the bolts in enough so that the bolts come out just a few threads past the nut.



Move the tension block to the end of the actuator. Then place the tensioning tool at the middle of the belt.



Set the wrench to the correct torque setting, adjust belt to achieve level position at the recommended torque.

MACRON DYNAMICS, INC.  
100 Phyllis Drive  
Croydon, PA 19021

P: 215-443-8888  
F: 215-443-0981  
macron@macrondynamics.com

[www.macrondynamics.com](http://www.macrondynamics.com)

Rev 01