



MACRON DYNAMICS, INC.

PRODUCT Datasheet

SPECIFICATIONS

Load Rating	0-437lbs
Ultimate Tensile Strength	1750lbs
Temperature Range	-20 C to +70 C (-4 F to +158 F)
Shipping Weight	0.75 lbs + 0.08lb/ft of belt
Belt Pitch	10mm

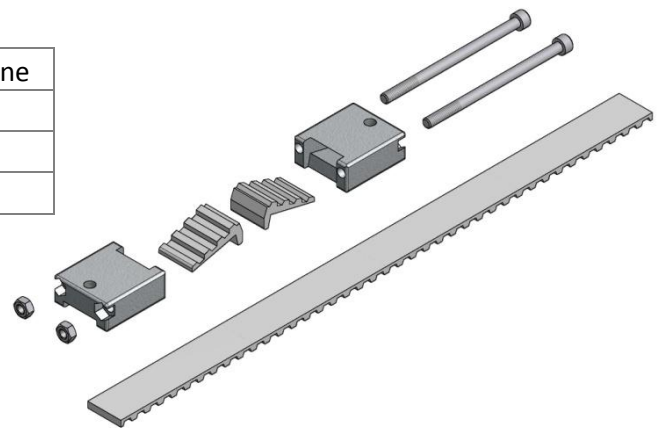
Drive Belt Kit

DBK-CA-__-__

Insert length per meter.
Ex. 5 meters = DBK-CA-05

MATERIALS

Belt	Steel Reinforced Polyurethane
Belt Wedge and Tension Block	Zinc Aluminum Alloy
Screws	Steel
Lock Nut	Steel

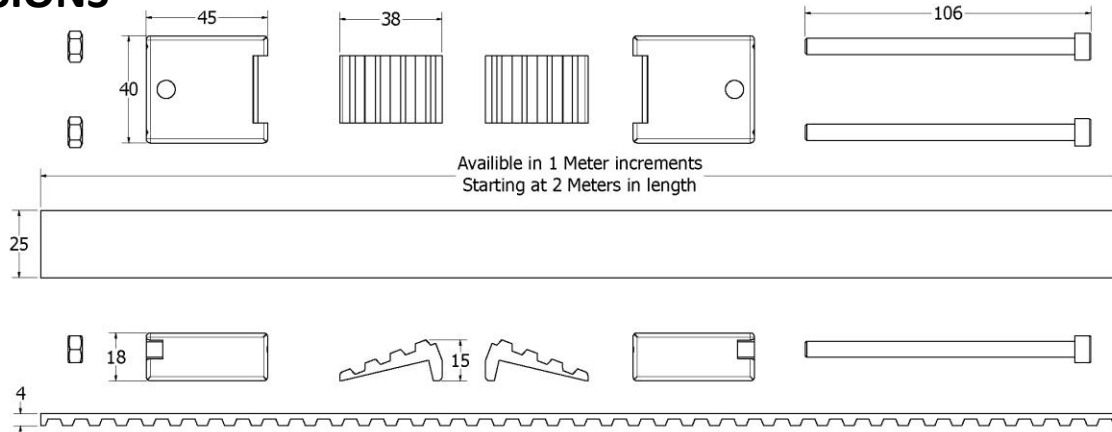


PARTS BREAKDOWN

Description	Qty/Kit
Drive Belt	1
Tension Block	2
Belt Wedge	2
M6 Socket Head Cap Screw	2
M6 Lock Nut	2

$$\text{BELT LENGTH} = (\text{BEAM LENGTH} \times 2) + .3\text{m}$$

DIMENSIONS





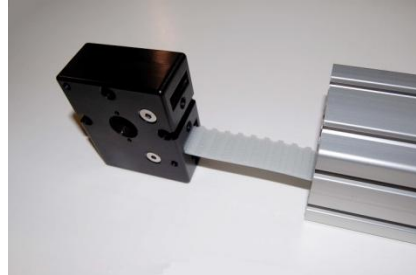
MACRON DYNAMICS, INC.

PRODUCT
Datasheet

Belt Installation Instructions



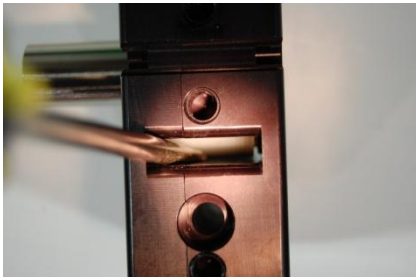
The tools you will need include a torque wrench (lb. in.), tensioning tool, tin snips, M5 allen wrench, and a flathead screwdriver.



Insert the belt into the slot closest to the bottom.



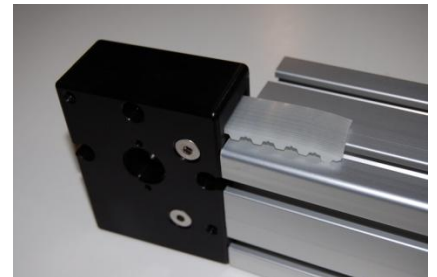
Push the belt in till it stops at an edge.



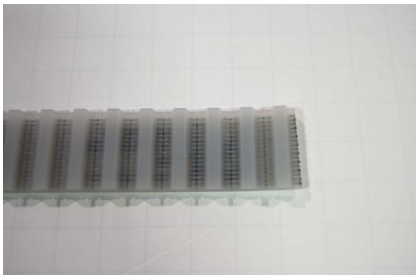
Using the screwdriver coax the belt upwards. Then push the belt till it stops at the top.



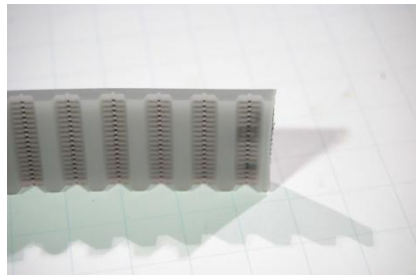
When the belt stops at the top, use the same method again with the screwdriver.



Once the belt becomes exposed, pull it till the slack in the belt comes tight.



Using a *sharp* pair of tin snips, cut belt to length. Last tooth needs to be cut in half.



It needs to be cut down the middle so that it has enough to catch the wedge.



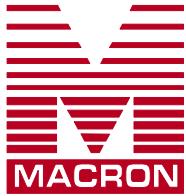
Exploded view of tension block.

MACRON DYNAMICS, INC.
100 Phyllis Drive
Croydon, PA 19021

www.macrondynamics.com

P: 215-443-8888
F: 215-443-0981
macron@macrondynamics.com

Rev 01



MACRON DYNAMICS, INC.

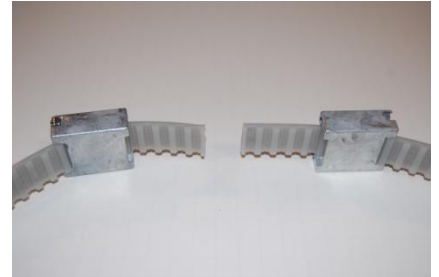
PRODUCT Datasheet



Insert nut in end of block.
This may require use of a
hammer.



Gently strike corner of block
with hammer to lock the nut
into the pocket.



Slide the belt through both of
the tension blocks so that the
bigger holes of the blocks
are on the outside, and the
taps are both on top.



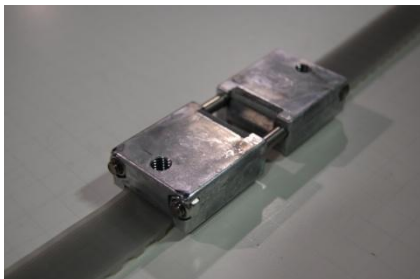
Place both wedges at the end
of the belt so that the half-
tooth is flush with the end of
the wedge.



Pull the belt to tighten the
wedge and the belt within
the tension block.



Place the bolts through the holes at the
end of the tension block and into the
other block. Be sure to put the heads
of the bolts facing the drive side.



Screw the bolts in enough so
that the bolts come out just a
few threads past the nut.



Move the tension block to
the end of the actuator. Then
place the tensioning tool
at the middle of the belt.



Set the wrench to the correct
torque setting, adjust belt to
achieve level position at the
recommended torque.

MACRON DYNAMICS, INC.
100 Phyllis Drive
Croydon, PA 19021

www.macrondynamics.com

P: 215-443-8888
F: 215-443-0981
macron@macrondynamics.com

Rev 01