



MACRON DYNAMICS, INC.

PRODUCT
Datasheet

SPECIFICATIONS

Load Rating	0-288bs
Ultimate Tensile Strength	1150lbs
Temperature Range	-20 C to +70 C (-4 F to +158 F)
Shipping Weight	0.75 lbs + 0.03lb/ft of belt
Belt Pitch	5mm

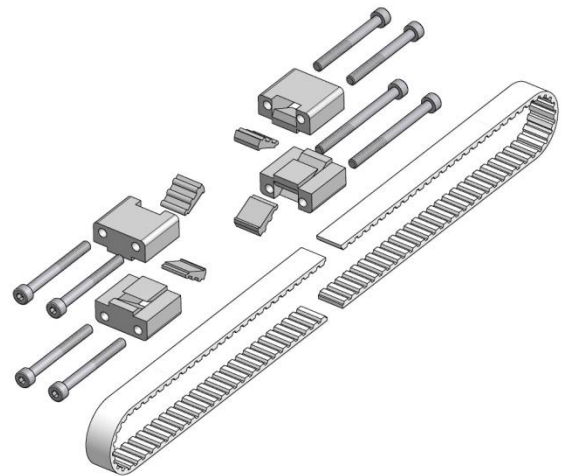
Drive Belt Kit

DBK-BE-__

Insert length per meter.
Ex. 5 meters = DBK-BE-05

MATERIALS

Belt	Steel Reinforced Polyurethane
Belt Wedge and Tension Block	Zinc Aluminum Alloy
Screws	Steel
Lock Nut	Steel

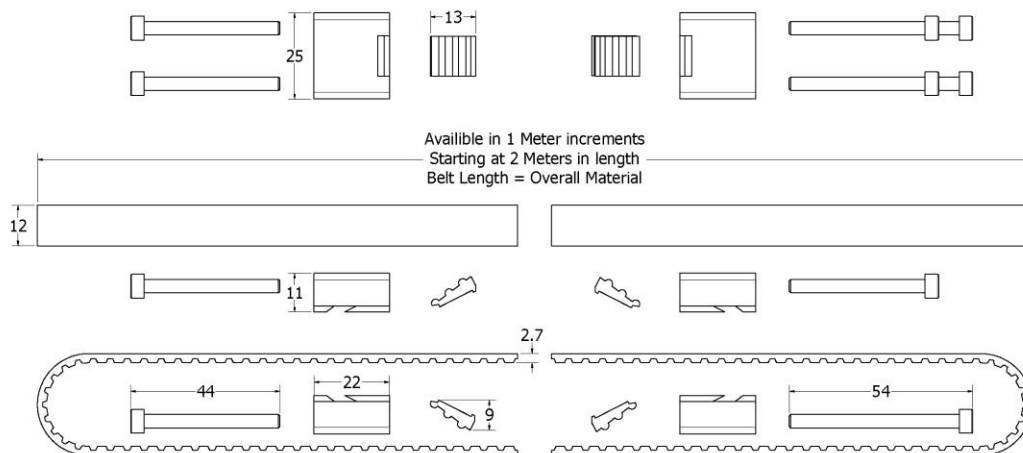


PARTS BREAKDOWN

Description	Qty/Kit
Drive Belt	2
Tension Block	4
Belt Wedge	4
M4 Socket Head Cap Screw	8

COMBINED BELT LENGTH = (BEAM LENGTH - .03m) X 2

DIMENSIONS



MACRON DYNAMICS, INC.
100 Phyllis Drive
Croydon, PA 19021

P: 215-443-8888
F: 215-443-0981
macron@macrondynamics.com

www.macrondynamics.com

Rev 01



MACRON DYNAMICS, INC.

PRODUCT
Datasheet

Belt Installation Instructions



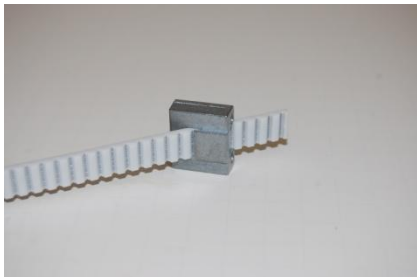
The tools you will need include a torque wrench (lb. in.), tensioning tool, tin snips, M3 allen wrench, and a flathead screwdriver.



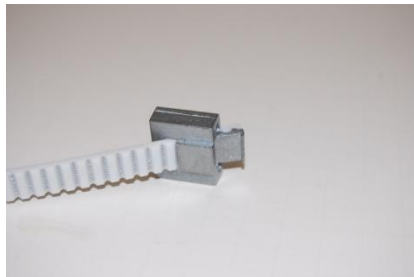
Using a *sharp* pair of tin snips, cut belt to length. Last tooth needs to be cut in half.



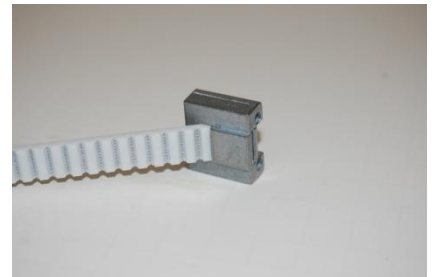
All the ends need to be cut down the middle so that it has enough to catch the wedge.



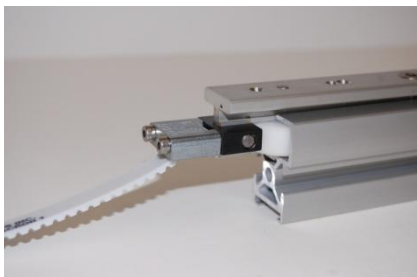
Slide the belt through both of the tension blocks so that the "M" is facing up.



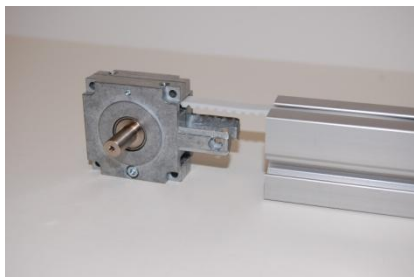
Place both wedges at the end of the belt so that the half-tooth is flush with the end of



Pull the belt to tighten the wedge and the belt within the tension block.



Pull the cart to each end and attach both tension blocks using different belts.



Insert the belt into the slot closest to the top.



Push the belt in till it comes out the top. A screwdriver might be helpful to help along the pulley

MACRON DYNAMICS, INC.
100 Phyllis Drive
Croydon, PA 19021

P: 215-443-8888
F: 215-443-0981
macron@macrondynamics.com

www.macrondynamics.com

Rev 01



MACRON DYNAMICS, INC.

PRODUCT Datasheet

Bottom View



Flip over the beam and make sure the cart block is in place.

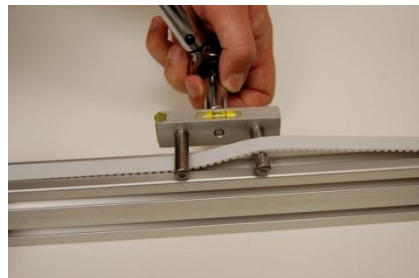
Bottom View



Repeat the same steps to get the belt through the tension assembly then attach to the cart block. Use the longer bolts on the idler side.



Move the cart to the end of the actuator. Then place the tensioning tool at the middle of the belt.



Set the wrench to the correct torque setting, adjust belt to achieve level position at the recommended torque.