

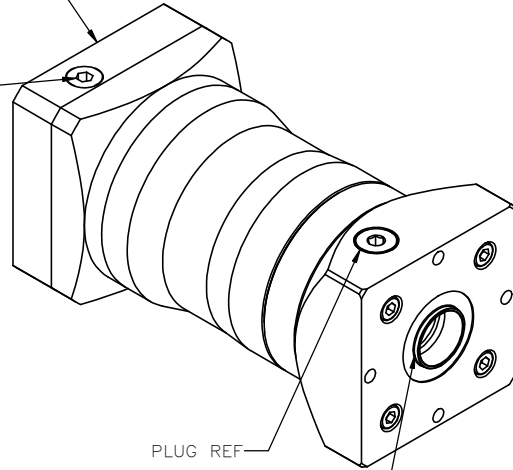
MPG-064-XXX

SINGLE STAGE HOLLOW OUTPUT PLANETARY GEARBOX

0.750" BORE
(XXX = GEARBOX RATIO)

MOTOR INPUT SHAFT DIAMETER 24mm MAX

TORQUE SETTING BASED ON
COUPLING SCREW SIZE



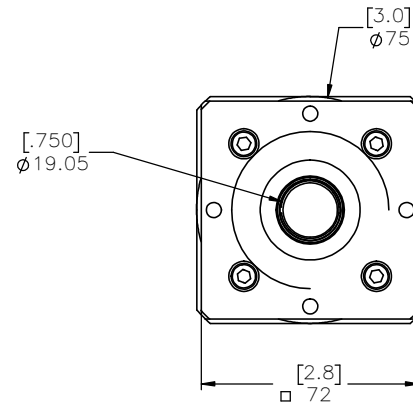
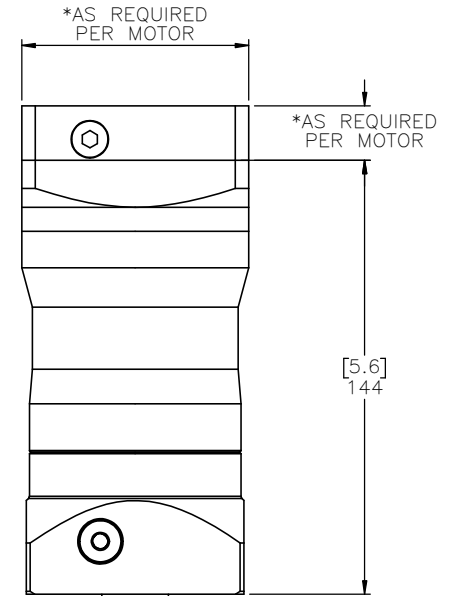
PLUG REF

CLAMP SCREW TORQUE SETTING 16NM [140 IN-LBS]


NOTES:

- 1.) MOTOR **MANUFACTURER AND MODEL NUMBER** REQUIRED TO PROPERLY SIZE THE MOTOR ADAPTOR PLATE. MAXIMUM MOTOR INPUT SHAFT DIAMETER IS 24mm.
- 2.) ADAPTOR PLATE SIZE WILL VARY BASED ON MOTOR SPECIFIED. OVERALL DIMENSIONS AND PLATE THICKNESS WILL BE DIFFERENT FROM VISUAL REPRESENTATION ABOVE
- 3.) MOTOR FLANGE BOLT CIRCLE PATTERN AND HOLE DIAMETER ALONG WITH MOTOR SHAFT DIAMETER AND LENGTH WILL DETERMINE THE FINAL SIZE OF THE ADAPTOR PLATE
- 4.) MACRON DYNAMICS, INC. MAKES EVERY EFFORT TO MATCH MOTOR DIMENSIONS TO MOTOR MANUFACTURER'S SPECIFICATIONS. THESE MANUFACTURER'S SPECIFICATIONS CAN CHANGE FROM TIME TO TIME WITHOUT NOTICE. MACRON IS NOT RESPONSIBLE FOR ADAPTORS THAT DO NOT MATE WITH THE MOTORS IF REFERENCE DIMENSIONS HAVE CHANGED OR IF THE USER CHANGES MOTOR MODELS AFTER PURCHASE

REVISION HISTORY			
REV.	DESCRIPTION	DATE	REVISED BY:



GEARBOX RATIO	3:1	10:1	5:1	7:1
MPG PART NUMBER SUFFIX	003	010	005	007
NOMINAL OUTPUT TORQUE – Nm (lb-in)	21 (186)	26 (230)	25 (222)	26 (230)
MAXIMUM ACCELERATION TORQUE – Nm (lb-in)	40 (354)	48 (425)	53 (470)	50 (443)
NOMINAL INPUT SPEED – RPM	3500	4000	3700	4000
MAXIMUM INPUT SPEED – RPM	6000	7000	7000	7000
STANDARD OUTPUT BACKLASH – arcmin	<8	<8	<8	<8
WEIGHT – kg (lb)	2 (4.4)	2 (4.4)	2 (4.4)	2 (4.4)
MASS MOMENT OF INERTIA (STD INPUT)– kg/cm2	.56	.40	.44	.41
MASS MOMENT OF INERTIA (LARGE INPUT >19mm MOTOR SHAFT)– kg/cm2	.99	.83	.87	.84
EFFICIENCY AT LOAD	97%	97%	97%	97%



MACRON DYNAMICS INC

THIS DRAWING IS THE PROPERTY OF MACRON DYNAMICS. ANY REPRODUCTIONS SHALL BE FOR QUOTATION, MANUFACTURING, OR PURCHASING PURPOSES ONLY. RELEASE OF DRAWINGS TO OTHER CONCERNS DOES NOT CONSTITUTE LICENSING IN ANY WAY. INFORMATION CONTAINED HEREIN IS PROPRIETARY AND CONFIDENTIAL.

DRAWN BY: TH DATE: 9/18/2018 MATERIAL: _____

CHECKED BY: -- DATE: DD/MM/YYYY

LAST SAVED BY: TH DATE: 6/21/2024

UNLESS OTHERWISE SPECIFIED, .XX ± .762
DIMENSIONS ARE IN MILLIMETERS. .XX ± .254
TOLERANCES UNLESS NOTED .XXX ± .127
OTHERWISE: ANG ± 0°30'

TITLE: MACRON 064 GEARBOX

FINISH: _____

SHEET 1 OF 1 PART NUMBER MPG-064-XXXX

SCALE 1:1 SHEET SIZE C