



MACRON DYNAMICS, INC.

PRODUCT
Datasheet

SPECIFICATIONS

Max Speed	2 meters/sec
Max Acceleration	5G
Shipping Weight	5.9 lbs + 10.3lb/meter of length

Guide Block Kit

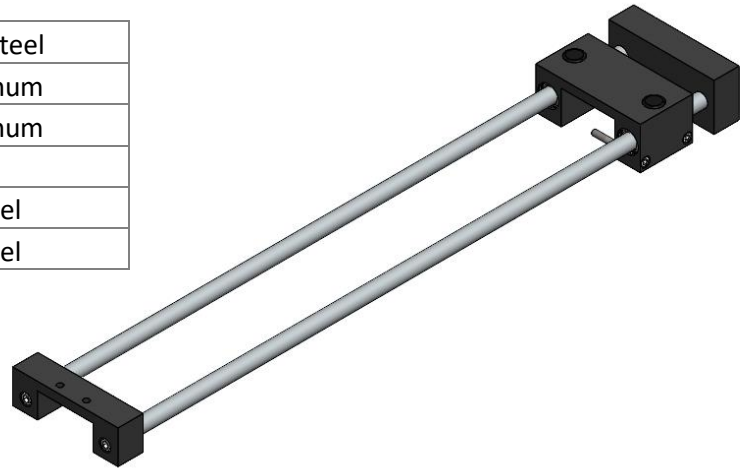
GBK-BT5-_____

Insert overall length in mm.
(See dimension at bottom of sheet) ↑

Ex. = GBK-BT5-500

MATERIALS

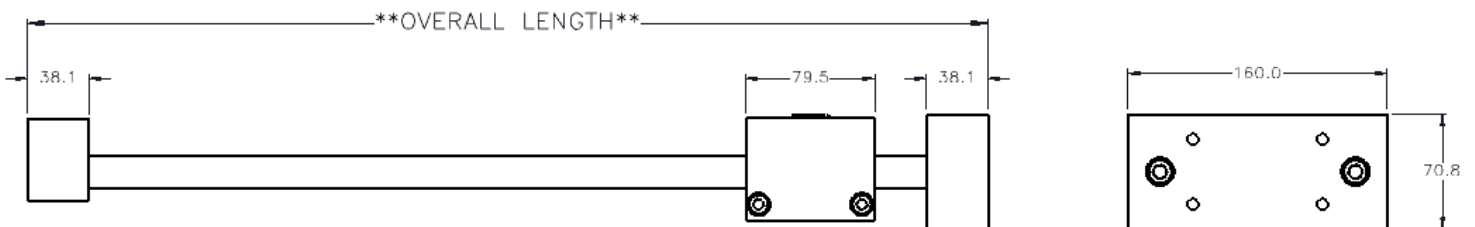
20mm rail	Chrome plated steel
End plates	Anodized aluminum
Guide block	Anodized aluminum
Linear bearings	Alloy steel
Grease fittings	Zinc plated steel
Hardware	Zinc plated steel



PARTS BREAKDOWN

Description	Qty/Kit
20mm rail	2
End plate	1
Tension block mount	1
Guide block assembly	1

DIMENSIONS



MACRON DYNAMICS, INC.
100 Phyllis Drive
Croydon, PA 19021

P: 215-443-8888
F: 215-443-0981
macron@macrondynamics.com

www.macrondynamics.com

Rev 01