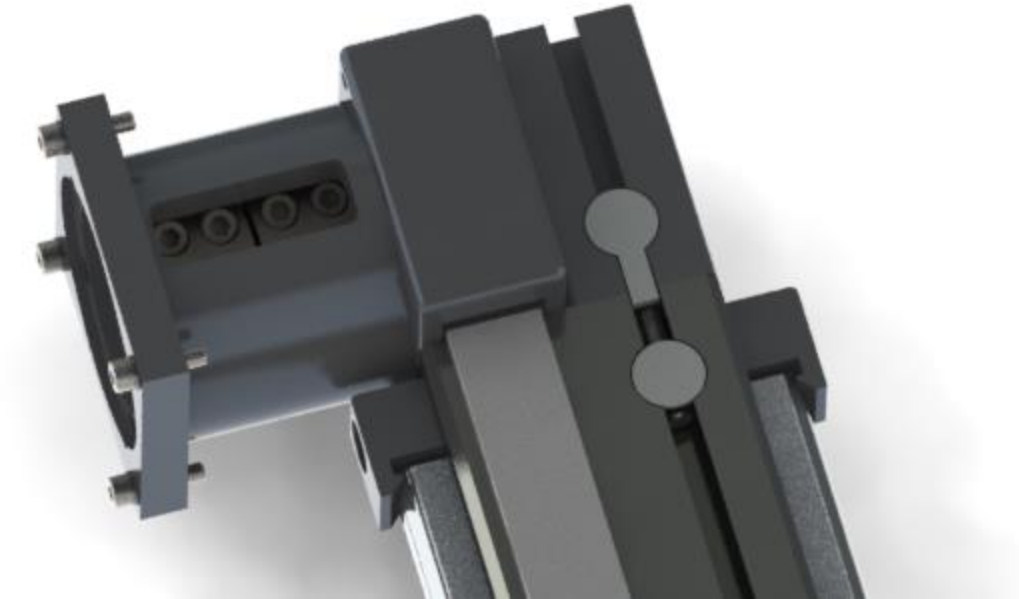


Macron MMK Coupling Torque



Bolt Size	Hex Size	Torque (in-lbs)
M3	2.5mm	20
M4	3mm	40
M5	4mm	80
M6	5mm	130
M8	6mm	320
M10	8mm	640
M12	10mm	1100
M16	14mm	2550
#6-32	7/64"	30
#8-32	9/64"	50
1/4-28	3/16"	170
5/16-24	1/4"	325
3/8-24	5/16"	570

*Coupling size will vary depending on the motor and actuator shaft sizes. Use the chart to determine the proper torque setting for the coupling input and output, as well as the screws used to attach the motor. The torque should be set based on the bolt size that is used.