

MDS-628- [] - [] - X

GEARBOX MODEL

MPG-062 _____
 MRG-062 _____
 RATIO: _____

FOR DIRECT DRIVE OPTION WITH MMK
 (NO GEARBOX) CHECK HERE: _____

MOTOR INFORMATION

MANUFACTURER: _____
 MODEL: _____

SENSOR INFORMATION X-AXIS:

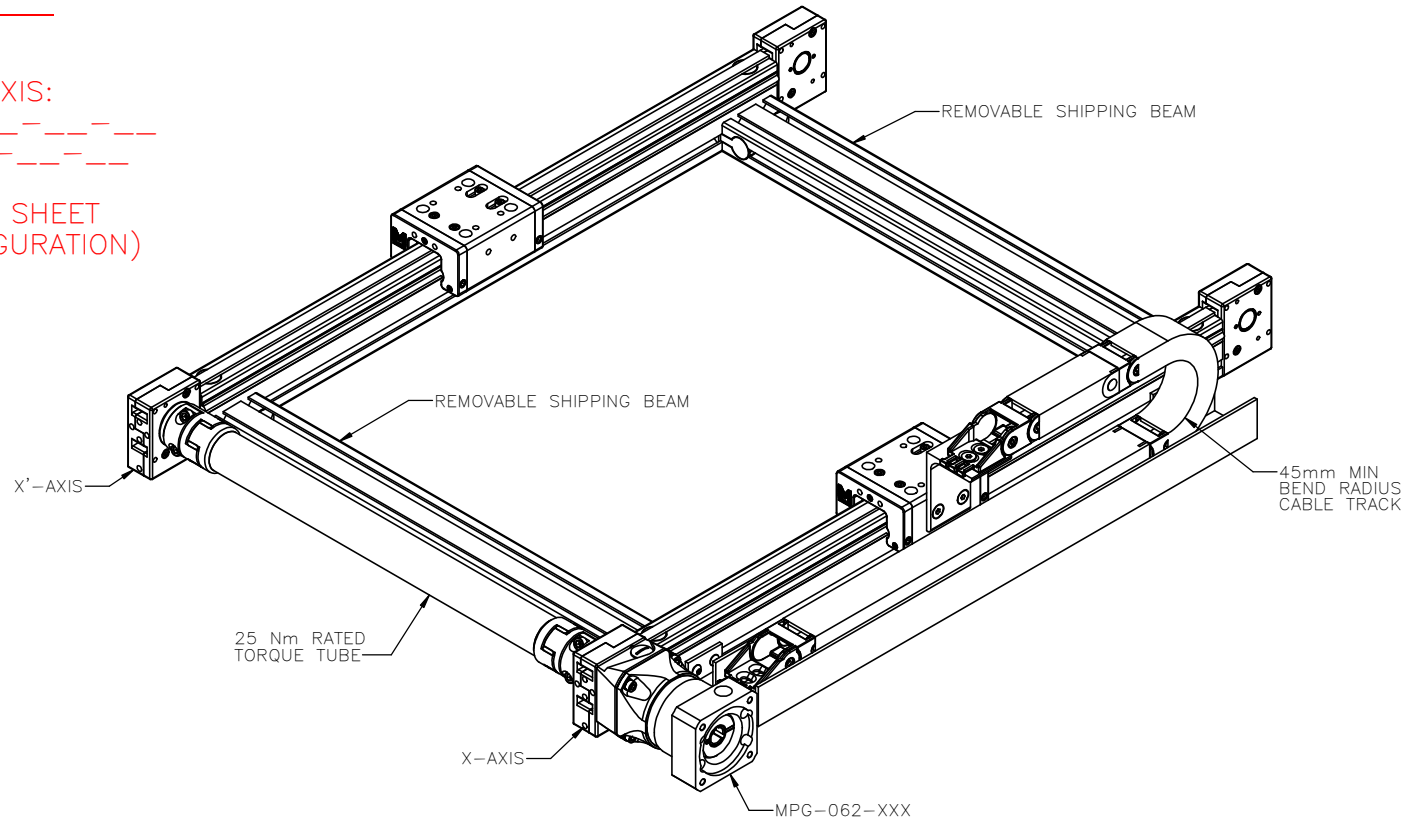
HOME-QTY _____ 244-____-____-____
 EOT-QTY _____ 244-____-____-____

(SEE T-SLOT SENSOR KIT SHEET
 FOR PART NUMBER CONFIGURATION)

ENTER Y CENTER-TO-CENTER DISTANCE
 DISTANCE IN INCREMENTS OF 25mm
 DISTANCE LIMITS: 500mm-1000mm

ENTER X-AXIS TRAVEL
 TRAVEL IN INCREMENTS OF 25mm
 TRAVEL LIMITS: 150mm-5575mm


*IF TRAVEL IS
 OUTSIDE LIMITS
 LISTED, CONTACT
 MACRON*



APPROVED: _____

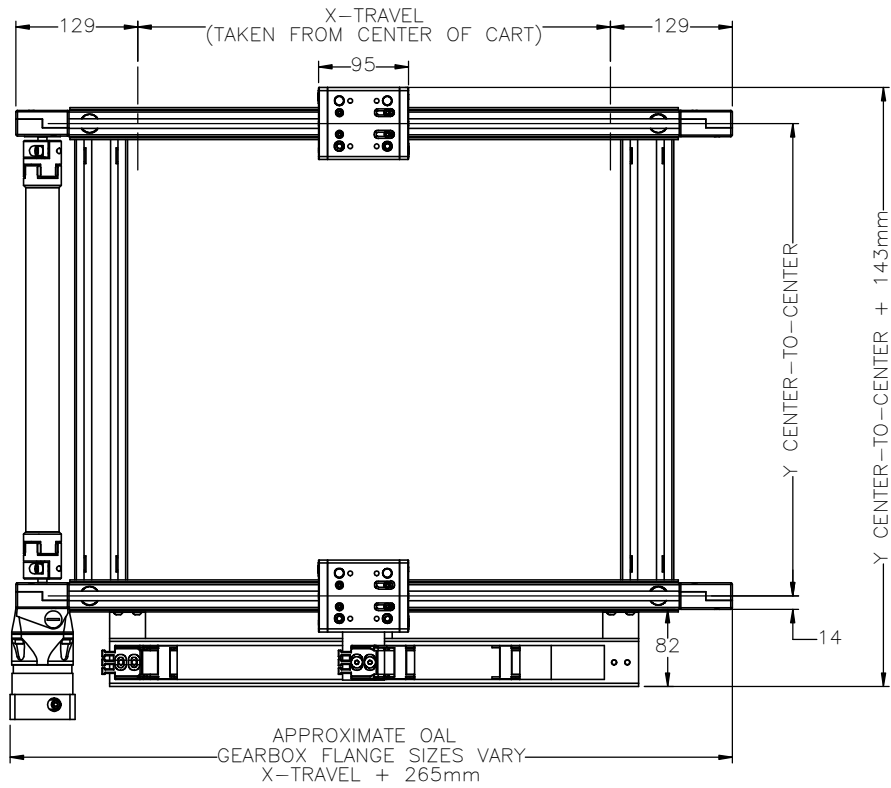
DATE: _____

PO:REFERENCE#: _____

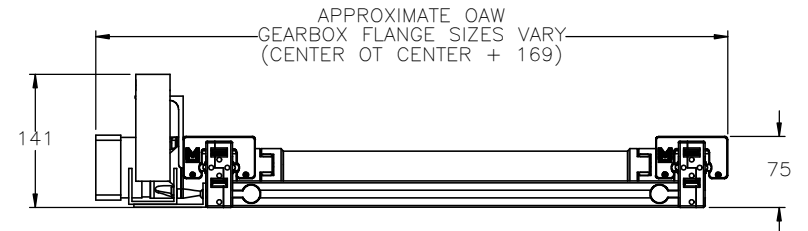
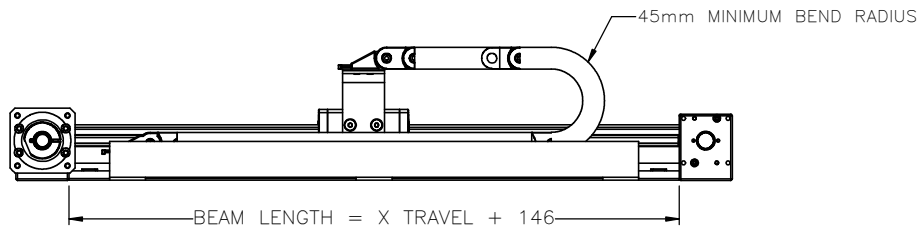
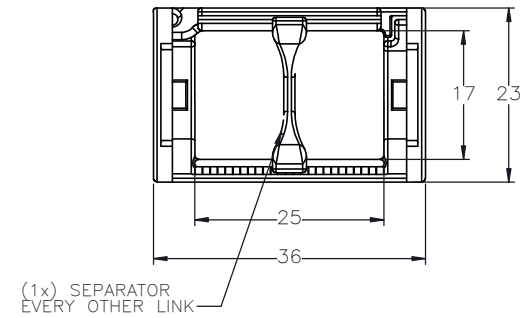
 MACRON DYNAMICS INC	DRAWN BY: JA DATE: 11/8/2019	MATERIAL:	TITLE: MACRON DUAL 628 SYSTEM
	CHECKED BY: -- DATE: DD/MM/YYYY	FINISH:	
	LAST SAVED BY: JA DATE: 8/9/2023	UNLESS OTHERWISE SPECIFIED: .X ± .762 DIMENSIONS ARE IN MILLIMETERS: .XX ± .254 TOLERANCES UNLESS NOTED: .XXX ± .127 OTHERWISE: ANG ± 0°30'	
SURFACE FINISH <input checked="" type="checkbox"/>		SCALE: 1:1 SHEET SIZE: C	
BREAK ALL SHARP EDGES DIMENSIONAL LIMITS APPLY AFTER FINISHING THIRD ANGLE PROJECTION		SHEET: 1 OF 6	PART NUMBER: MDS-628-X-X-X


THIS DRAWING IS THE PROPERTY OF MACRON DYNAMICS
 ANY REPRODUCTIONS SHALL BE FOR QUOTATION,
 MANUFACTURING, OR PURCHASING PURPOSES ONLY.
 RELEASE OF DRAWINGS TO OTHER CONCERNS DOES NOT
 CONSTITUTE LICENSING IN ANY WAY. INFORMATION
 CONTAINED HEREIN IS PROPRIETARY AND CONFIDENTIAL.

WORK ENVELOPE AND GANTRY FOOTPRINT



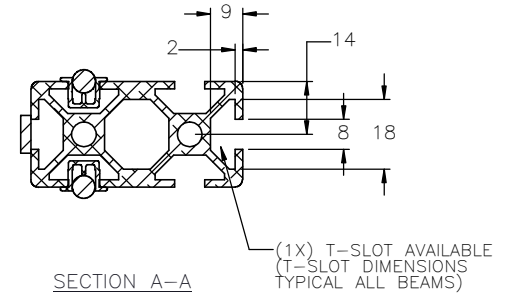
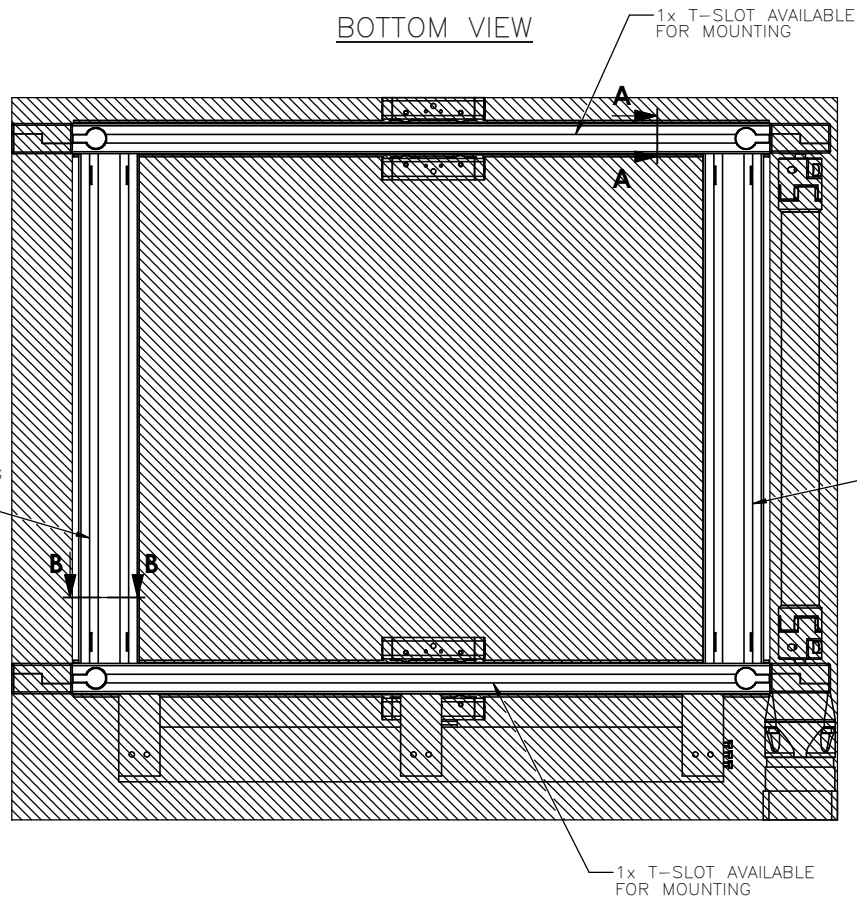
CABLE TRACK CROSS SECTION



 MACRON DYNAMICS INC	DRAWN BY: JA DATE: 11/8/2019	MATERIAL:	TITLE: MACRON DUAL 628 SYSTEM	
	CHECKED BY: -- DATE: DD/MM/YYYY	FINISH:		
	LAST SAVED BY: JA DATE: 8/9/2023	UNLESS OTHERWISE SPECIFIED, .X ± .762 DIMENSIONS ARE IN MILLIMETERS, .XX ± .254 TOLERANCES UNLESS NOTED .XXX ± .127 OTHERWISE: ANG ± 0°30'	SCALE: 1:1	SHEET SIZE: C
	THIS DRAWING IS THE PROPERTY OF MACRON DYNAMICS. ANY REPRODUCTIONS SHALL BE FOR QUOTATION, MANUFACTURING, OR PURCHASING PURPOSES ONLY. RELEASE OF DRAWINGS TO OTHER CONCERNS DOES NOT CONSTITUTE LICENSING IN ANY WAY. INFORMATION CONTAINED HEREIN IS PROPRIETARY AND CONFIDENTIAL.	SURFACE FINISH <input checked="" type="checkbox"/> BREAK ALL SHARP EDGES DIMENSIONAL LIMITS APPLY AFTER FINISHING THIRD ANGLE PROJECTION	SHEET 2 OF 6	PART NUMBER MDS-628-X-X-X

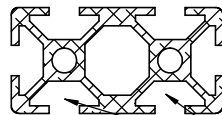
GANTRY MOUNTING FEATURES

BOTTOM VIEW




2x T-SLOTS AVAILABLE FOR MOUNTING
(IF BEAM IS NOT REMOVED)

2x T-SLOTS AVAILABLE FOR MOUNTING
(IF BEAM IS NOT REMOVED)

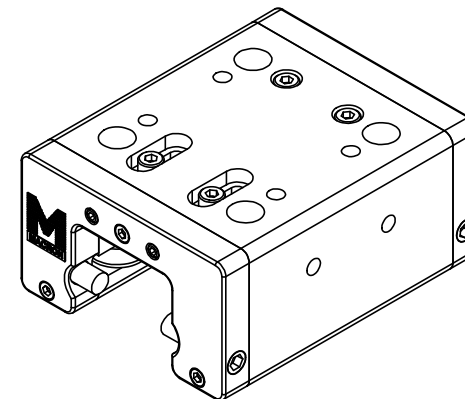
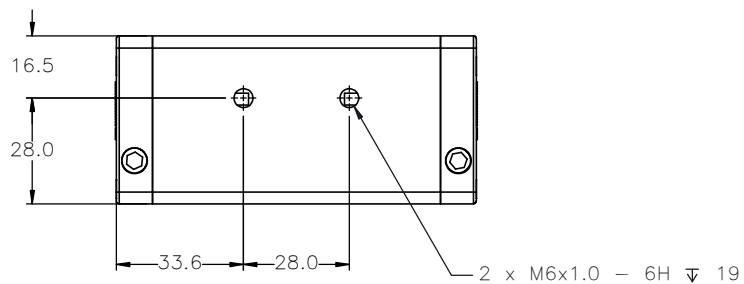
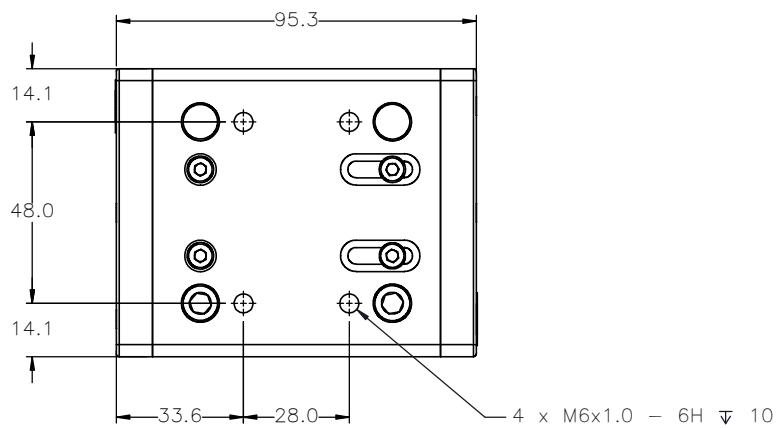
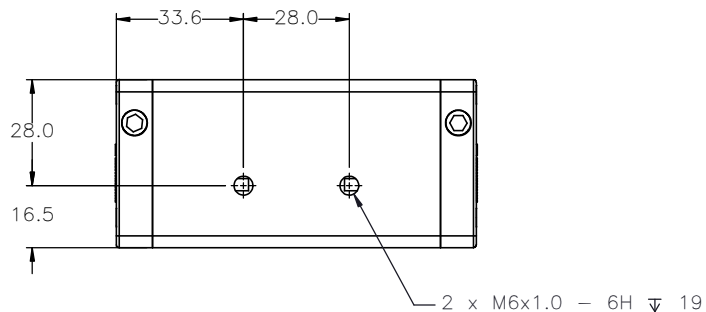



SECTION B-B

(2x) T-SLOTS AVAILABLE

 MACRON DYNAMICS INC	DRAWN BY: JA DATE: 11/8/2019	MATERIAL:	TITLE: MACRON DUAL 628 SYSTEM
	CHECKED BY: -- DATE: DD/MM/YYYY	FINISH:	
	LAST SAVED BY: JA DATE: 8/9/2023	UNLESS OTHERWISE SPECIFIED: .X ± .762 DIMENSIONS ARE IN MILLIMETERS: .XX ± .254 TOLERANCES UNLESS NOTED: .XXX ± .127 OTHERWISE: ANG ± 0°30'	SCALE: 1:1 SHEET SIZE: C
THIS DRAWING IS THE PROPERTY OF MACRON DYNAMICS. ANY REPRODUCTIONS SHALL BE FOR QUOTATION, MANUFACTURING OR PURCHASING PURPOSES ONLY. RELEASE OF DRAWINGS TO OTHER CONCERNS DOES NOT CONSTITUTE LICENSING IN ANY WAY. INFORMATION CONTAINED HEREIN IS PROPRIETARY AND CONFIDENTIAL.	SURFACE FINISH: <input checked="" type="checkbox"/> BREAK ALL SHARP EDGES DIMENSIONAL LIMITS APPLY AFTER FINISHING THIRD ANGLE PROJECTION	SHEET: 3 OF 6 PART NUMBER: MDS-628-X-X-X	REV:

CART MOUNTING FEATURES



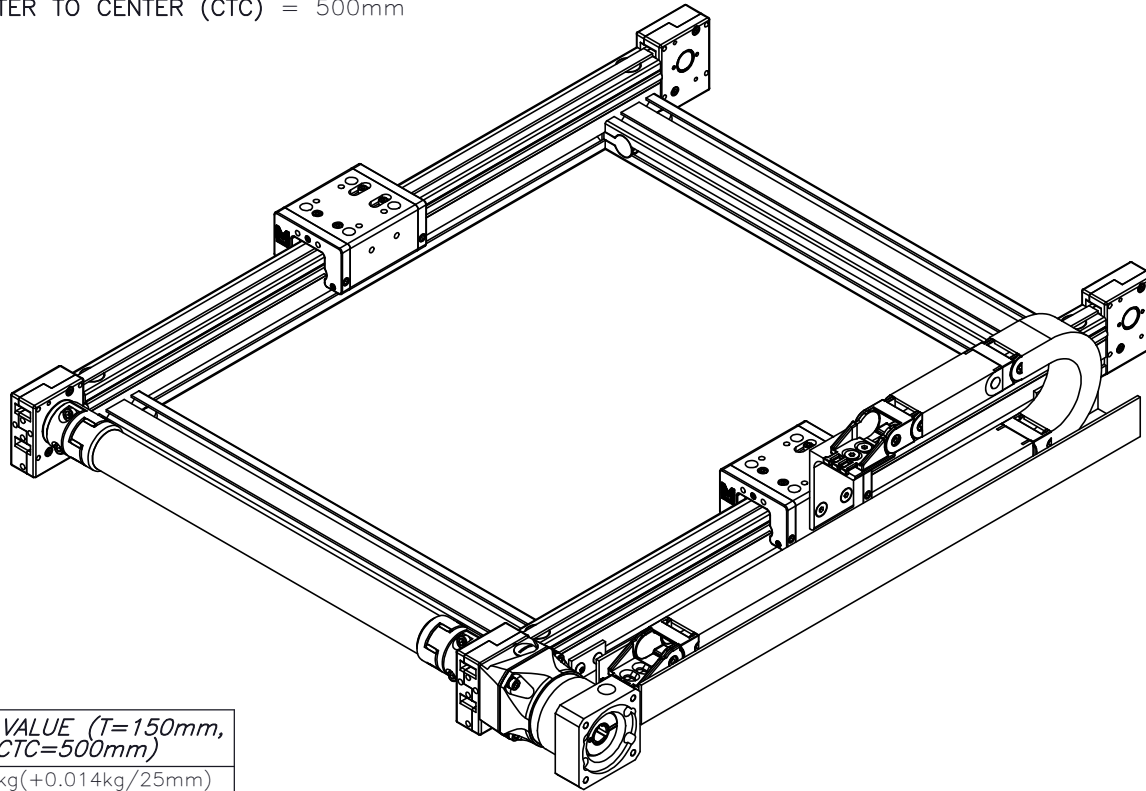
 MACRON DYNAMICS INC	DRAWN BY: JA DATE: 11/8/2019	MATERIAL:	TITLE: MACRON MINI 6 CART ASSEMBLY	
	CHECKED BY: -- DATE: DD/MM/YYYY	FINISH:		
	LAST SAVED BY: JA DATE: 8/9/2023	UNLESS OTHERWISE SPECIFIED: DIMENSIONS ARE IN MILLIMETERS: .XX ± .254 TOLERANCES UNLESS NOTED: .XXX ± .127 OTHERWISE: ANG ± 0°30'	SCALE: 1:1	SHEET SIZE: C
	THIS DRAWING IS THE PROPERTY OF MACRON DYNAMICS. ANY REPRODUCTIONS SHALL BE FOR QUOTATION, MANUFACTURING, OR PURCHASING PURPOSES ONLY. RELEASE OF DRAWINGS TO OTHER CONCERNS DOES NOT CONSTITUTE LICENSING IN ANY WAY. INFORMATION CONTAINED HEREIN IS PROPRIETARY AND CONFIDENTIAL.	SURFACE FINISH: <input checked="" type="checkbox"/> BREAK ALL SHARP EDGES DIMENSIONAL LIMITS APPLY AFTER FINISHING THIRD ANGLE PROJECTION	SHEET: 4 OF 6 PART NUMBER: MDS-628-X-X-X	REV: 02

MOTOR SIZING WORKSHEET

(INCREMENTAL ADDERS REFER TO MASS PER TRAVEL LENGTH)

BASE VALUES USED

X TRAVEL = 150mm
CENTER TO CENTER (CTC) = 500mm




PROPERTY	BASE VALUE (T=150mm, CTC=500mm)
**MOVING MASS	1.228kg(+0.014kg/25mm)
BELT MASS	0.064kg(+0.004kg/25mm)
PULLEY PITCH ϕ	33.42mm (1.32")
PULLEY WIDTH	16.3mm (0.64")
PULLEY MATERIAL	STEEL
TORQUE TUBE LENGTH	463mm
TORQUE TUBE ϕ	35mm
TORQUE TUBE MASS	0.535kg(+0.017kg/25mm)
TORQUE TUBE MATERIAL	ANODIZED ALUMINUM ELASTOMER STYLE COUPLINGS WITH HUB
TRAVEL PER REV	105mm

X-TRAVEL = _____ mm
Y-TRAVEL = _____ mm

X-TRAVEL = _____ mm
CENTER TO CENTER (CTC) = _____ mm

NOTE: ALL SUPPLIED MASSES DO NOT INCLUDE CUSTOMER COMPONENTS (MOTORS, CABLES, ETC)

GEARBOX MASS (ADD TO SYSTEM MASS)	MPG-062	1.0kg
	MRG-062	3.0kg

TOTAL SYSTEM MASS	(X TRAVEL x .0053) + (CTC x .0040) + 3.648 = kg		
 MACRON DYNAMICS INC	DRAWN BY: JA DATE: 11/8/2019 CHECKED BY: -- DATE: DD/MM/YYYY LAST SAVED BY: JA DATE: 8/9/2023	MATERIAL:	TITLE: MACRON DUAL 628 SYSTEM
	UNLESS OTHERWISE SPECIFIED, DIMENSIONS ARE IN MILLIMETERS. TOLERANCES UNLESS NOTED OTHERWISE: .X ± .762 .XX ± .254 .XXX ± .127 ANG ± 0°30'	FINISH:	SCALE 1:1
THIS DRAWING IS THE PROPERTY OF MACRON DYNAMICS. ANY REPRODUCTIONS SHALL BE FOR QUOTATION, MANUFACTURING OR PURCHASING PURPOSES ONLY. RELEASE OF DRAWINGS TO OTHER CONCERNS DOES NOT CONSTITUTE LICENSING IN ANY WAY. INFORMATION CONTAINED HEREIN IS PROPRIETARY AND CONFIDENTIAL.	SURFACE FINISH <input checked="" type="checkbox"/> BREAK ALL SHARP EDGES DIMENSIONAL LIMITS APPLY AFTER FINISHING THIRD ANGLE PROJECTION	SHEET 5 OF 6 PART NUMBER MDS-628-X-X-X	REV

SPECIFICATIONS

Sensor Type	Inductive
Sensor Size	Fits all 8mm wide T-Slots
Operating Voltage	10-30 VDC
Voltage Drop Across Conducting Sensor	≤1.8 V at 100 mA
Number of Conductors (AWG)	3x26 AWG
Temperature Range	-40°C to 105°C

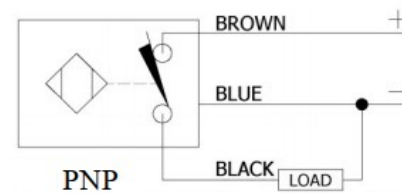
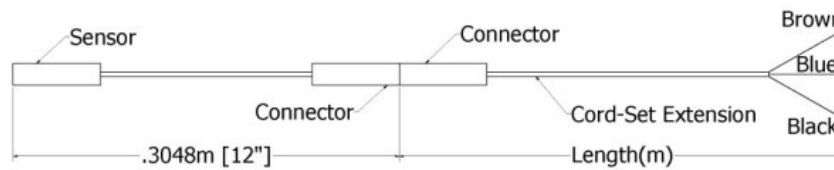
Part Number Configuration

244- - - - -

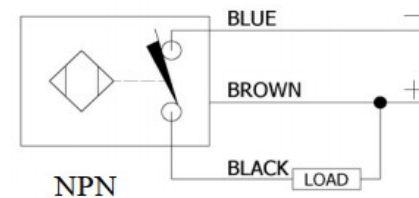
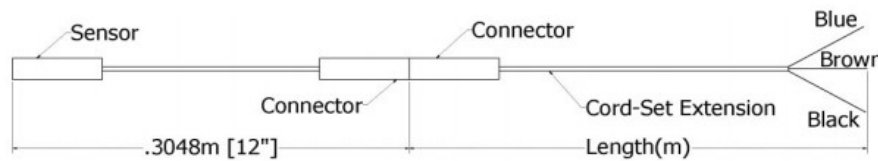
PNP or NPN	NC or NO	02	Meters
PNP or NPN	NC or NO	06	Meters
PNP or NPN	NC or NO	12	Meters

Example: PNP, normally closed, cord-set extension length 6 meters = 244-PNP-NC-06

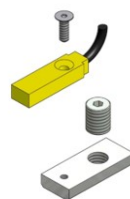
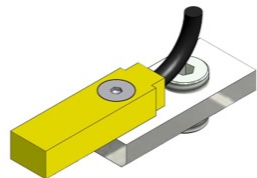
PNP Diagrams



NPN Diagrams



KIT INCLUDES – SENSOR, CORDSET EXTENSION, AND MOUNTING HARDWARE



	DRAWN BY: JA DATE: 11/8/2019 CHECKED BY: -- DATE: DD/MM/YYYY LAST SAVED BY: JA DATE: 8/9/2023	MATERIAL:	TITLE:
	UNLESS OTHERWISE SPECIFIED, DIMENSIONS ARE IN MILLIMETERS. TOLERANCES UNLESS NOTED OTHERWISE: .X ± .762 .XX ± .254 .XXX ± .127 ANG ± 0°30'	FINISH:	T-SLOT SENSOR KIT
SURFACE FINISH: <input checked="" type="checkbox"/> BREAK ALL SHARP EDGES DIMENSIONAL LIMITS APPLY AFTER FINISHING THIRD ANGLE PROJECTION	SHEET: 6 OF 6 PART NUMBER: SENSOR CALL-OUT	SCALE: 1:1	SHEET SIZE: C