

# MSA-R6D-E-BC- -

|                       |   |
|-----------------------|---|
| PULLEY PITCH DIAMETER | 47.75mm (1.880")  |
| PULLEY WIDTH          | 28.9mm (1.138")   |
| PULLEY MATERIAL       | STEEL   |
| BELT WEIGHT (kg)      | $((\text{TRAVEL IN METERS} \times 2) + .61) \times .12$ |
| TRAVEL PER REV.       | 150mm   |
| TRAVEL MIN.           | 150mm   |
| TRAVEL MAX.           | 5825mm  |
| CART WEIGHT (kg)      | 1.41kg  |
| SYSTEM WEIGHT (kg)    | $(\text{TRAVEL IN METERS} \times 4.4) + 4.3$            |

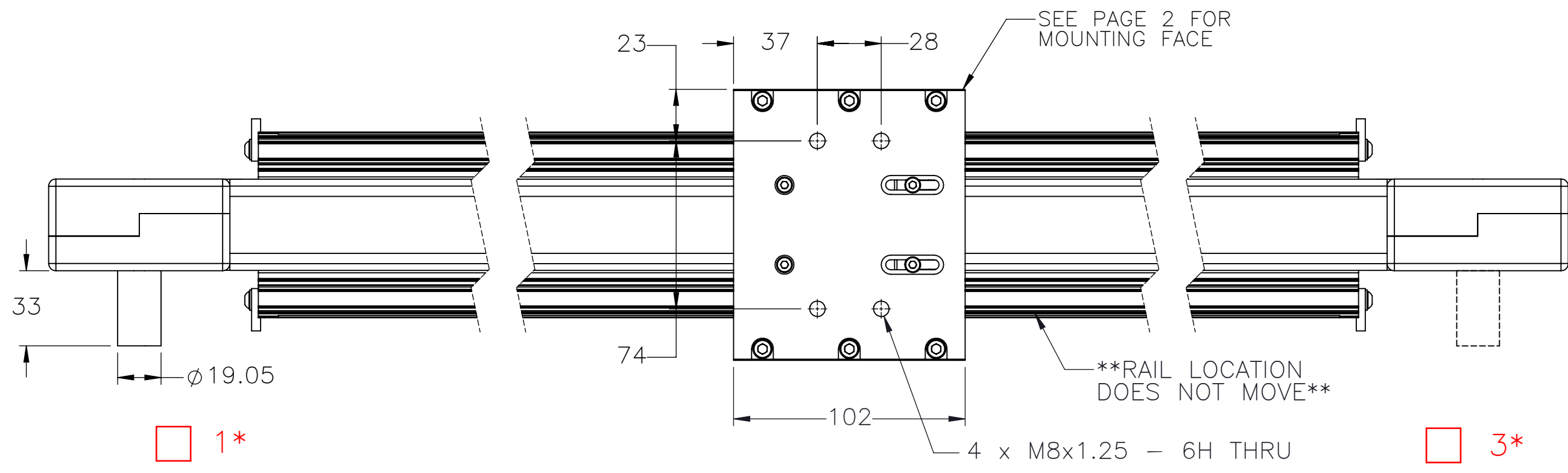
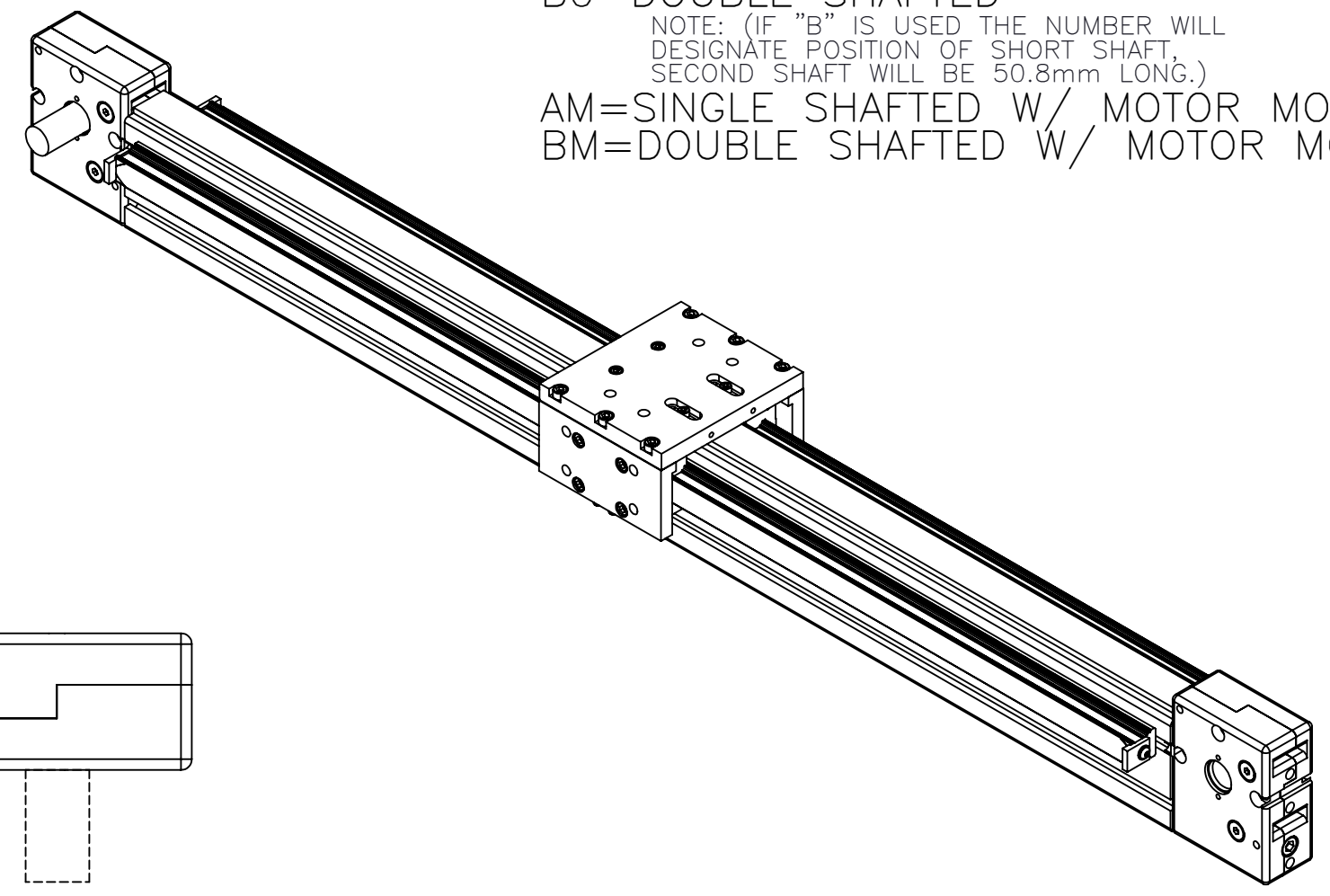
**ENTER**  
TRAVEL IN INCREMENTS OF 25mm

**SELECT**  
DRIVE SHAFT LOCATION\*

**SHAFTING TYPE**  
A0= SINGLE SHAFTED  
B0= DOUBLE SHAFTED

NOTE: (IF "B" IS USED THE NUMBER WILL DESIGNATE POSITION OF SHORT SHAFT. SECOND SHAFT WILL BE 50.8mm LONG.)

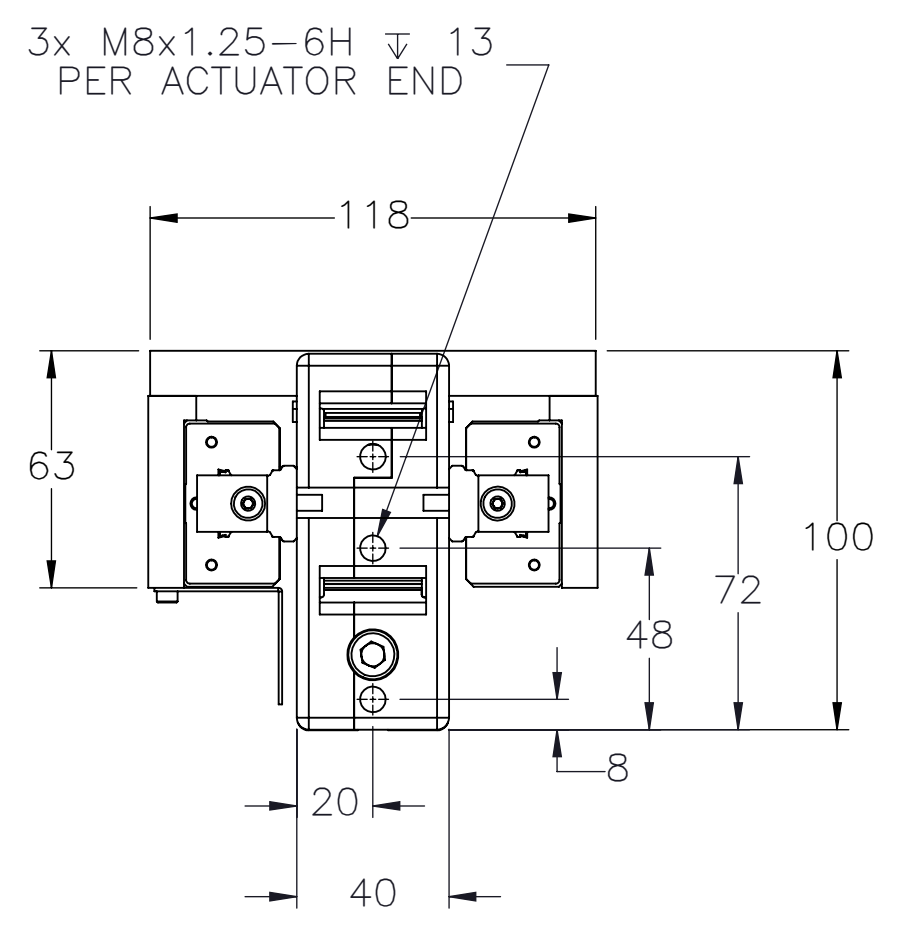
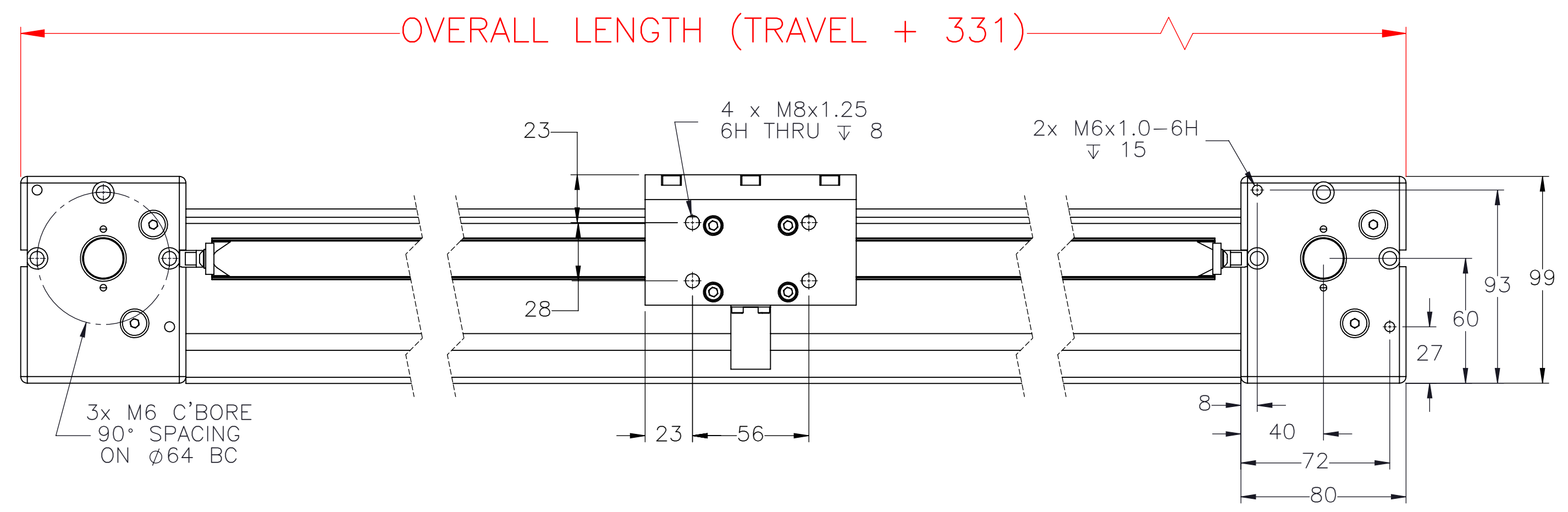
AM= SINGLE SHAFTED W/ MOTOR MOUNT  
BM= DOUBLE SHAFTED W/ MOTOR MOUNT



1\*

3\*

OVERALL LENGTH (TRAVEL + 331)



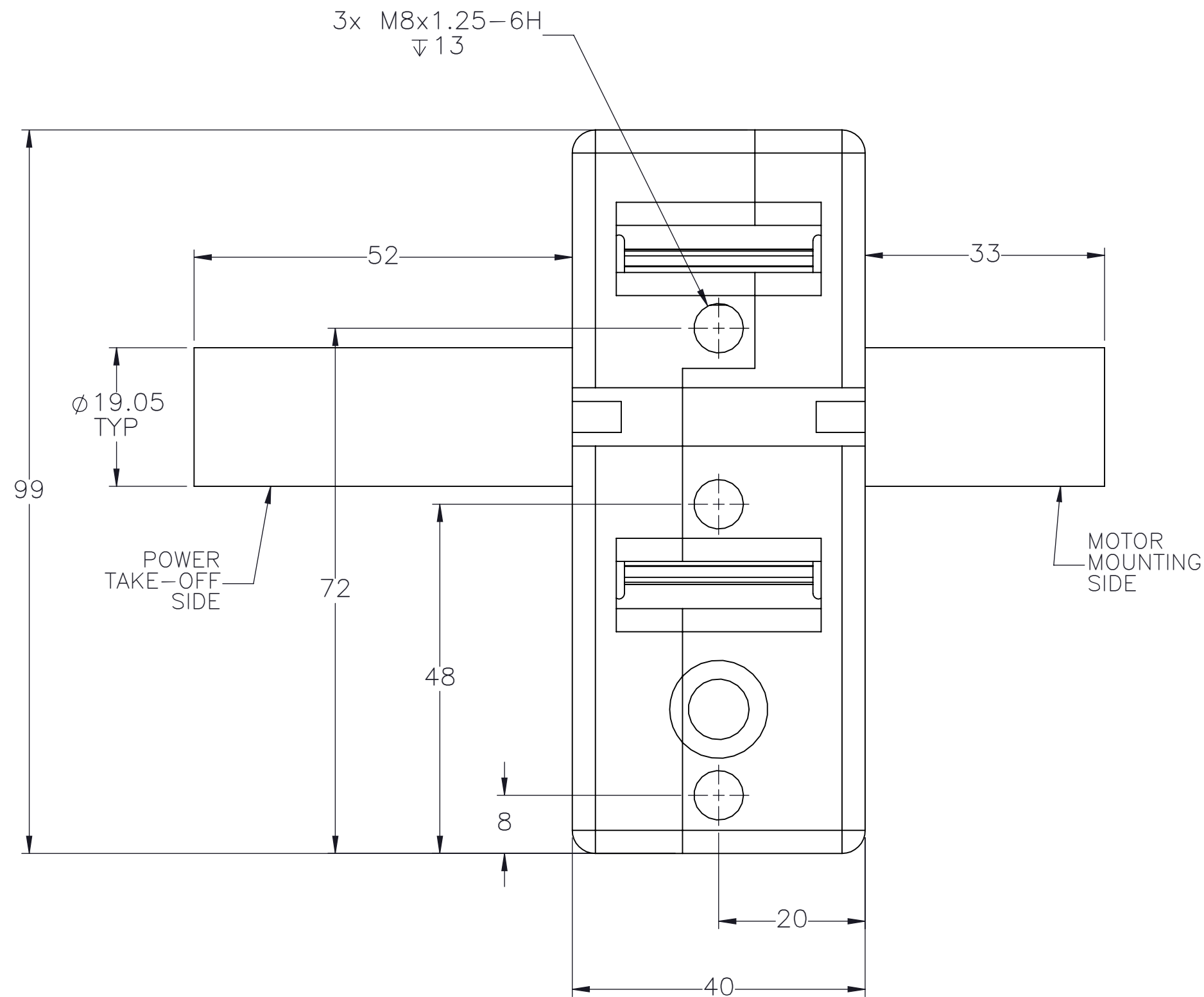
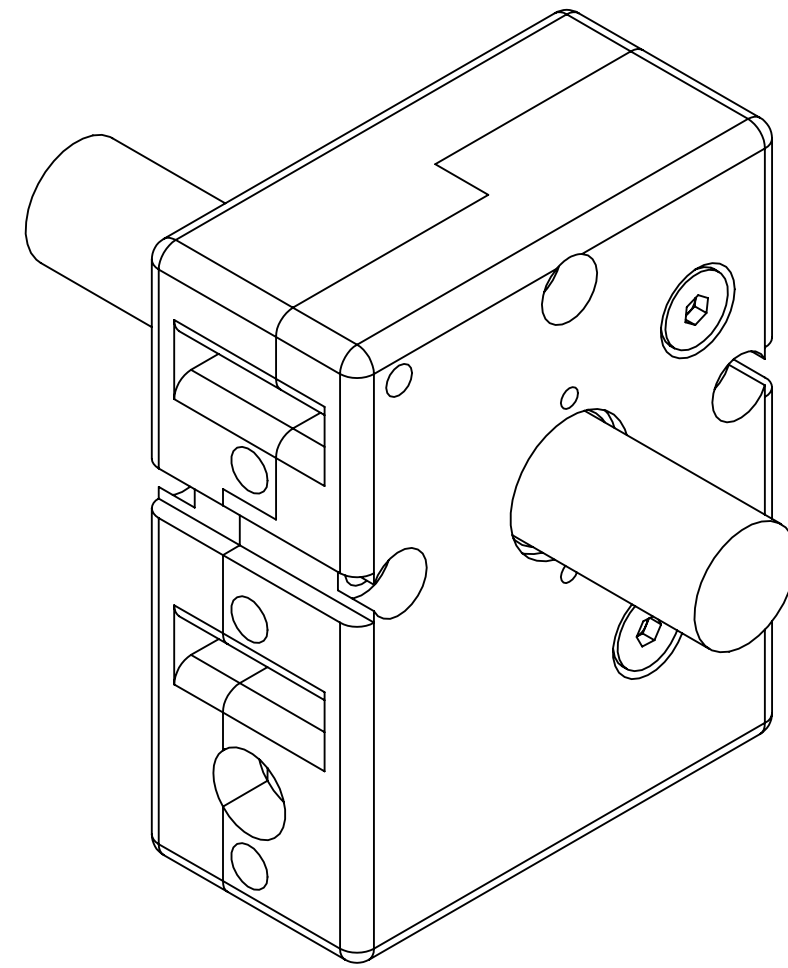
APPROVED: \_\_\_\_\_

DATE: \_\_\_\_\_

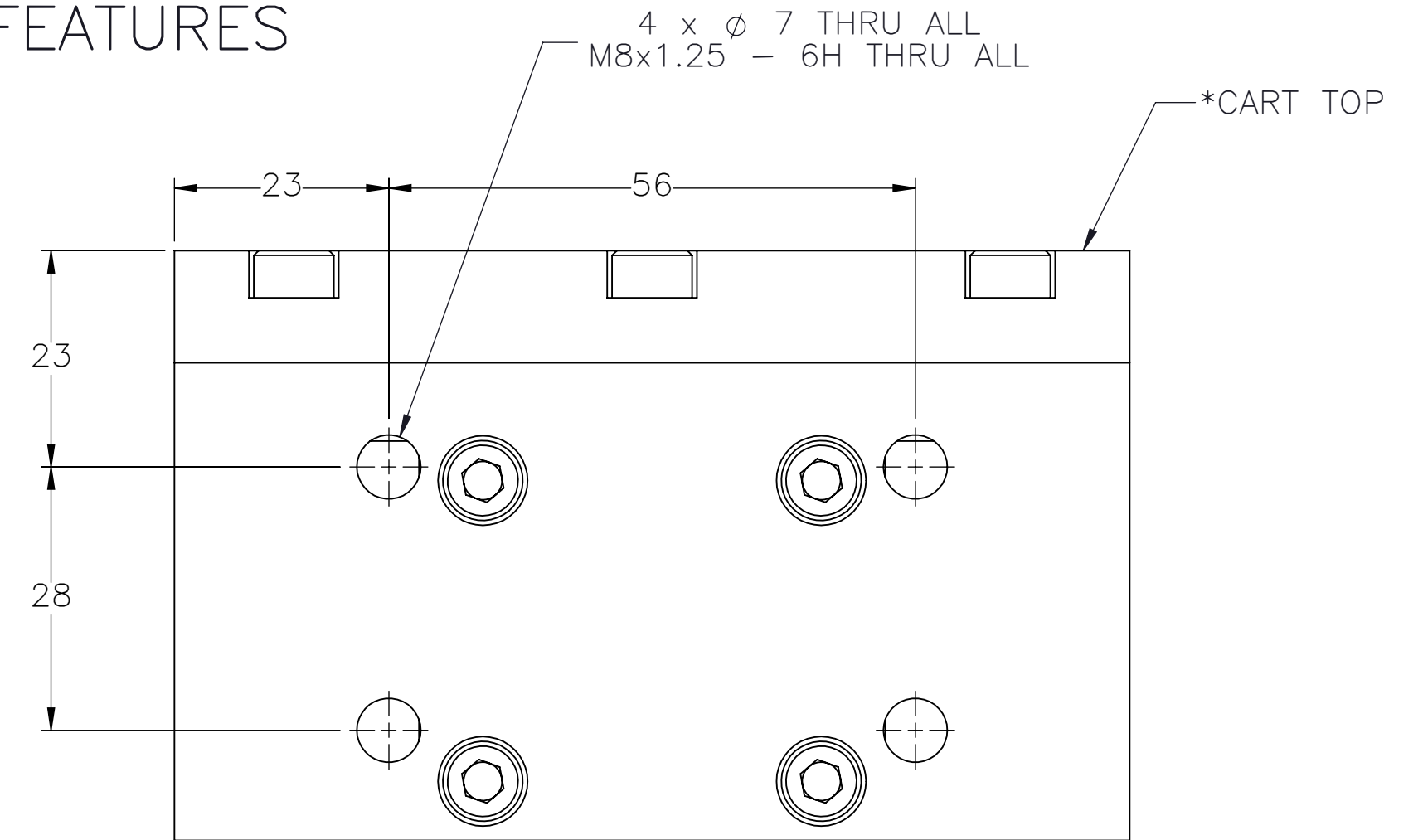
|                                |  |                                       |   |
|--------------------------------|--|---------------------------------------|---|
| <br><b>MACRON DYNAMICS INC</b> | DRAWN BY: PHW      DATE: 11/26/2017<br>CHECKED BY: --      DATE: DD/MM/YYYY<br>LAST SAVED BY: Paul      DATE: 5/30/2023  | MATERIAL:                             | TITLE: MACRON 6 DUAL RAIL ACTUATOR<br><br>SCALE 1:1    SHEET SIZE C |
|                                | UNLESS OTHERWISE SPECIFIED, DIMENSIONS ARE IN INCHES. TOLERANCES UNLESS NOTED OTHERWISE:<br>.X ± .03<br>.XX ± .010<br>.XXX ± .005<br>ANG ± 0°30'   | FINISH:                               |   |
|                                | SURFACE FINISH $\checkmark$<br>BREAK ALL SHARP EDGES<br>DIMENSIONAL LIMITS APPLY AFTER FINISHING<br>THIRD ANGLE PROJECTION   | SHEET 1 OF 2      PART NUMBER MSA-R6D |   |
|                                | THIS DRAWING IS THE PROPERTY OF MACRON DYNAMICS. ANY REPRODUCTIONS SHALL BE FOR QUOTATION, MANUFACTURING, OR PURCHASING PURPOSES ONLY. RELEASE OF DRAWINGS TO OTHER CONCERNS DOES NOT CONSTITUTE LICENSING IN ANY WAY. INFORMATION CONTAINED HEREIN IS PROPRIETARY AND CONFIDENTIAL. | REV                                   |   |

SPECIFICATIONS ARE SUBJECT TO CHANGE WITHOUT NOTICE

# DOUBLE SHAFTED PULLEY

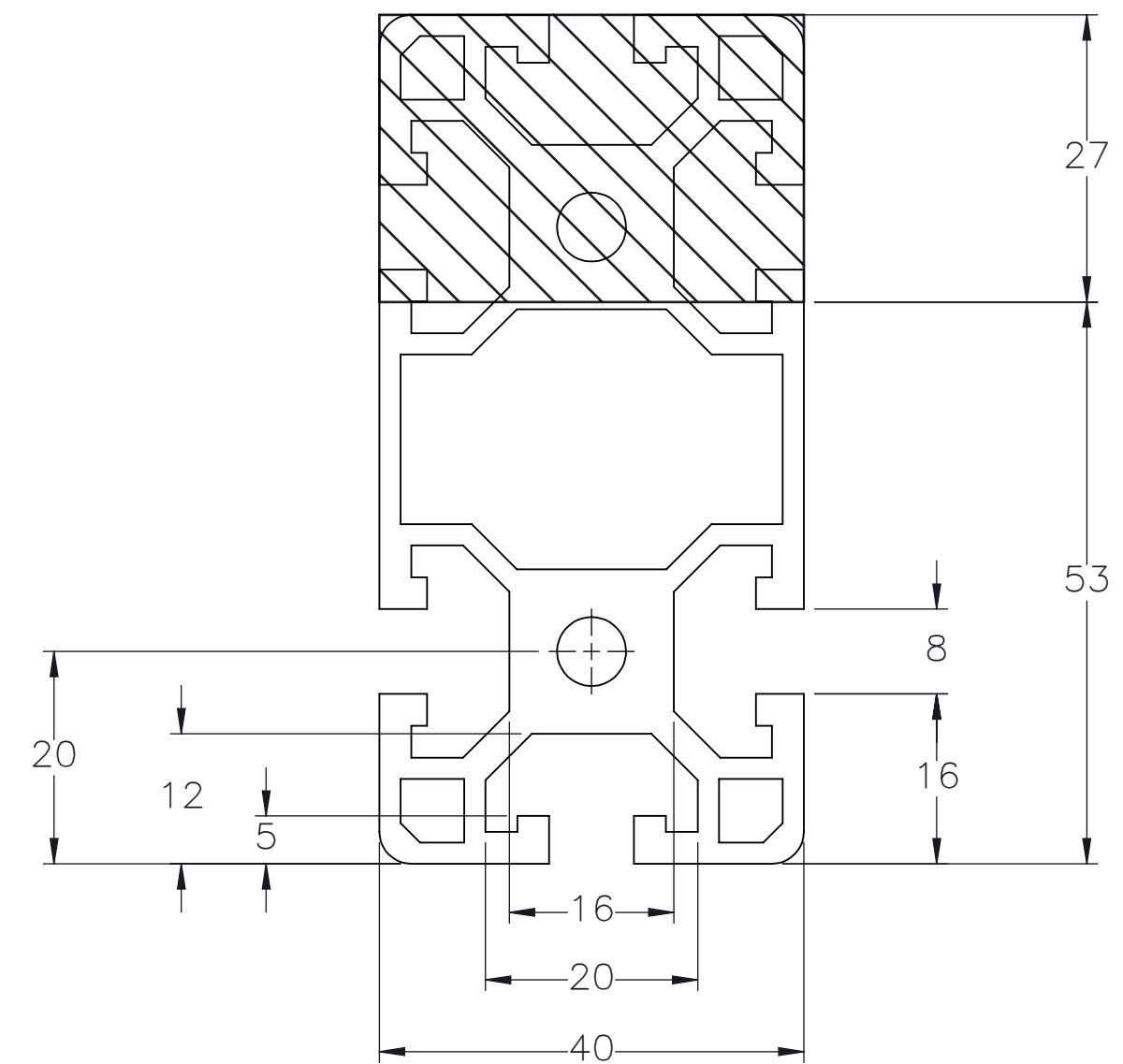


# CART MOUNTING FEATURES



# CUSTOMER ACCESSIBLE MOUNTING FEATURES, T-NUT SLOTS

SUGGESTED MOUNTING ACCESSORY  
MACRON P/N: M22138



MACRON DYNAMICS INC

THIS DRAWING IS THE PROPERTY OF MACRON DYNAMICS. ANY REPRODUCTIONS SHALL BE FOR QUOTATION, MANUFACTURING, OR PURCHASING PURPOSES ONLY. RELEASE OF DRAWINGS TO OTHER CONCERNS DOES NOT CONSTITUTE LICENSING IN ANY WAY. INFORMATION CONTAINED HEREIN IS PROPRIETARY AND CONFIDENTIAL.

SPECIFICATIONS ARE SUBJECT TO CHANGE WITHOUT NOTICE

DRAWN BY: PHW DATE: 11/26/2017  
CHECKED BY: -- DATE: DD/MM/YYYY  
LAST SAVED BY: Tim DATE: 5/30/2023

UNLESS OTHERWISE SPECIFIED, DIMENSIONS ARE IN INCHES. TOLERANCES UNLESS NOTED OTHERWISE:  
.X ± .03  
.XX ± .010  
.XXX ± .005  
ANG ± 0°30'

SURFACE FINISH √

BREAK ALL SHARP EDGES  
DIMENSIONAL LIMITS APPLY AFTER FINISHING  
THIRD ANGLE PROJECTION

MATERIAL:

FINISH:

SHEET

2 OF 2

TITLE:  
MACRON 6 DUAL RAIL ACTUATOR

SCALE 1:1 SHEET SIZE C

PART NUMBER

MSA-R6D

REV