

MSA-BT2-E-BC- -

PULLEY PITCH DIAMETER	47.75mm (1.880")
PULLEY WIDTH	28.9mm (1.138")
PULLEY MATERIAL	STEEL
BELT WEIGHT (kg)	$((\text{TRAVEL IN METERS} \times 2) + .61) \times .12$
TRAVEL PER REV.	150mm
TRAVEL MIN.	150mm
TRAVEL MAX.	1500mm
CART/PUSHER WEIGHT (kg)	$(\text{TRAVEL IN METERS} \times 2.4) + 1.3$
SYSTEM WEIGHT (kg)	$(\text{TRAVEL IN METERS} \times 5.7) + 4.7$

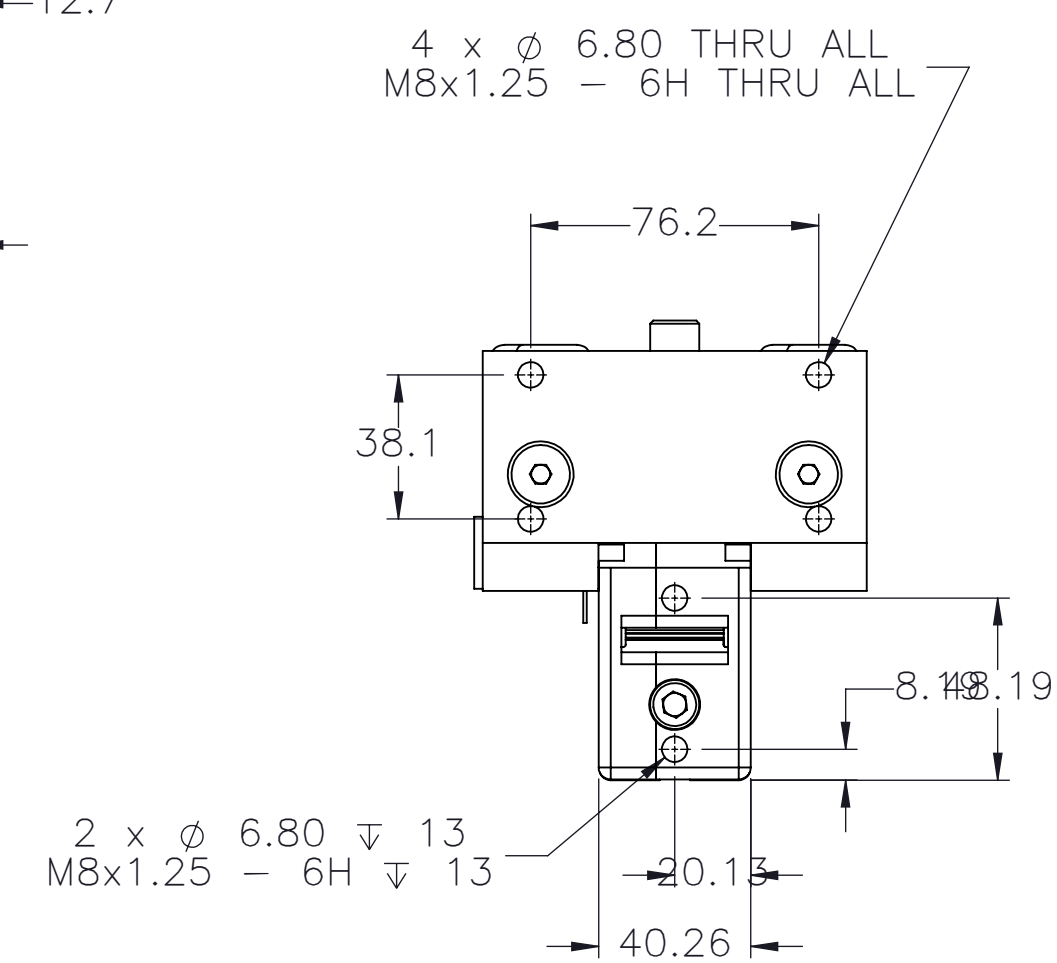
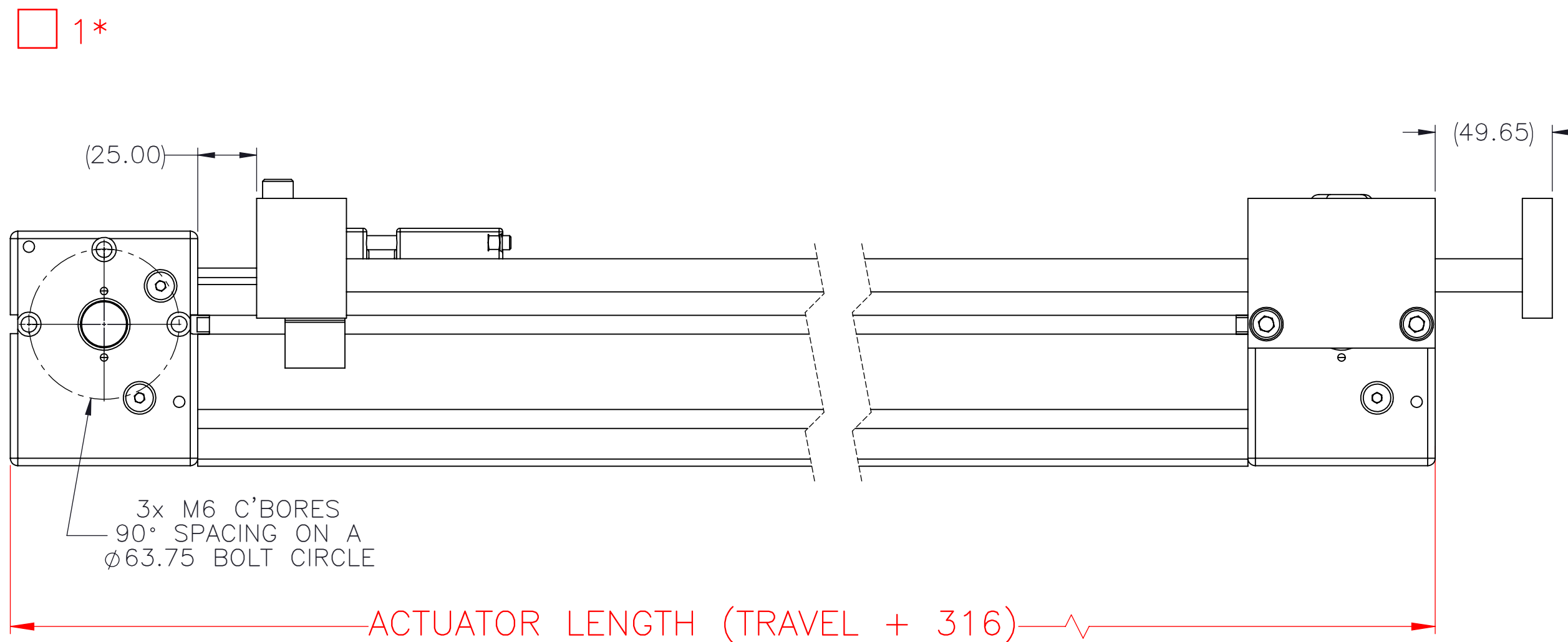
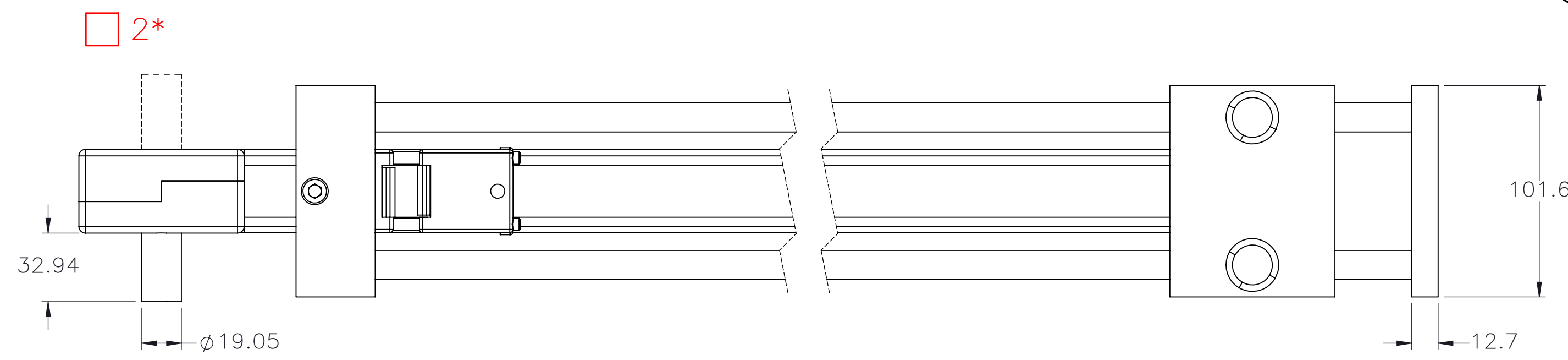
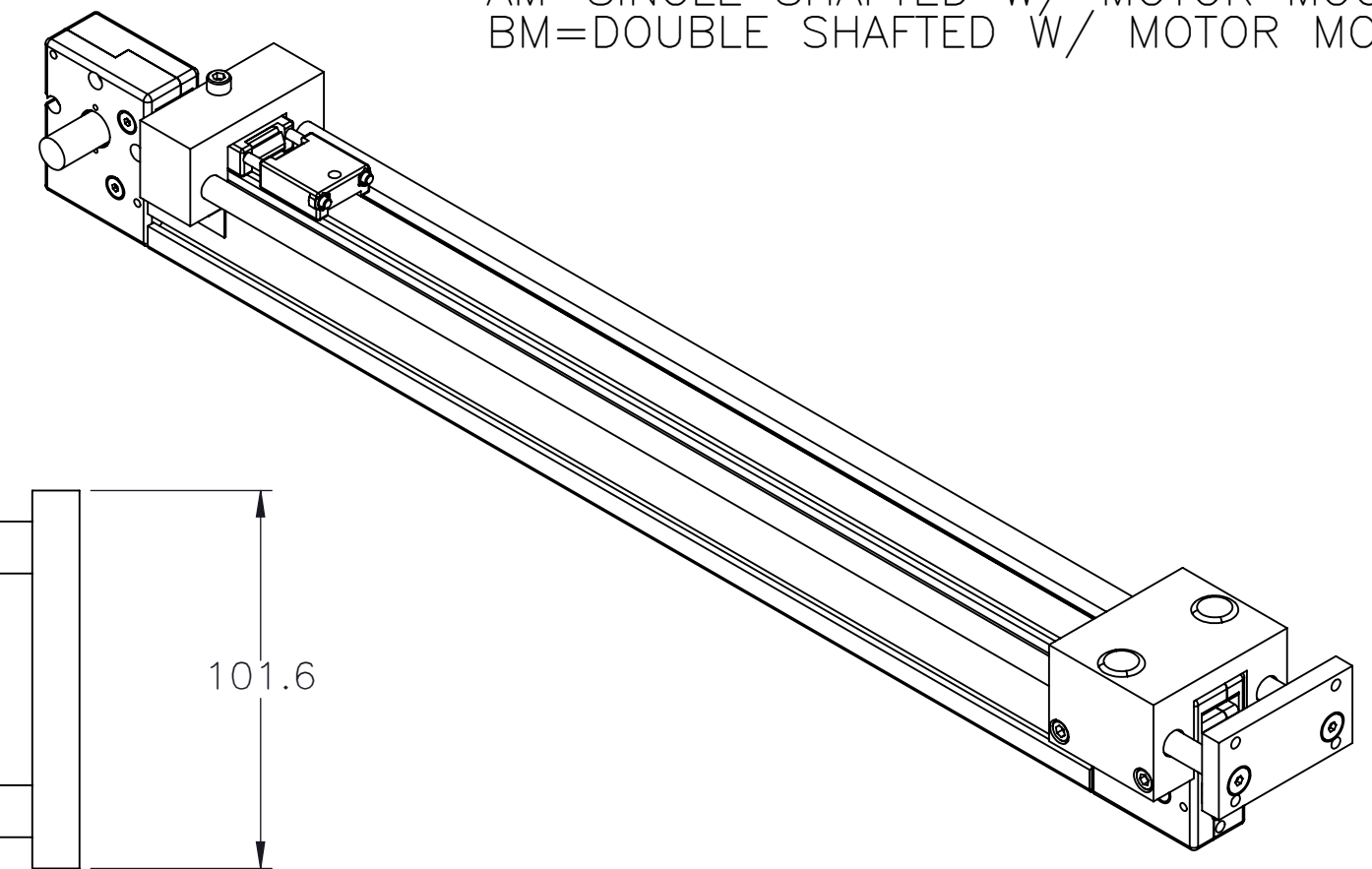
ENTER
TRAVEL IN INCREMENTS OF 25mm

SELECT
DRIVE SHAFT LOCATION*

SHAFTING TYPE
A0= SINGLE SHAFTED
B0= DOUBLE SHAFTED

NOTE: (IF "B" IS USED THE NUMBER WILL DESIGNATE POSITION OF SHORT SHAFT. SECOND SHAFT WILL BE 50.8mm LONG.)

AM= SINGLE SHAFTED W/ MOTOR MOUNT
BM= DOUBLE SHAFTED W/ MOTOR MOUNT



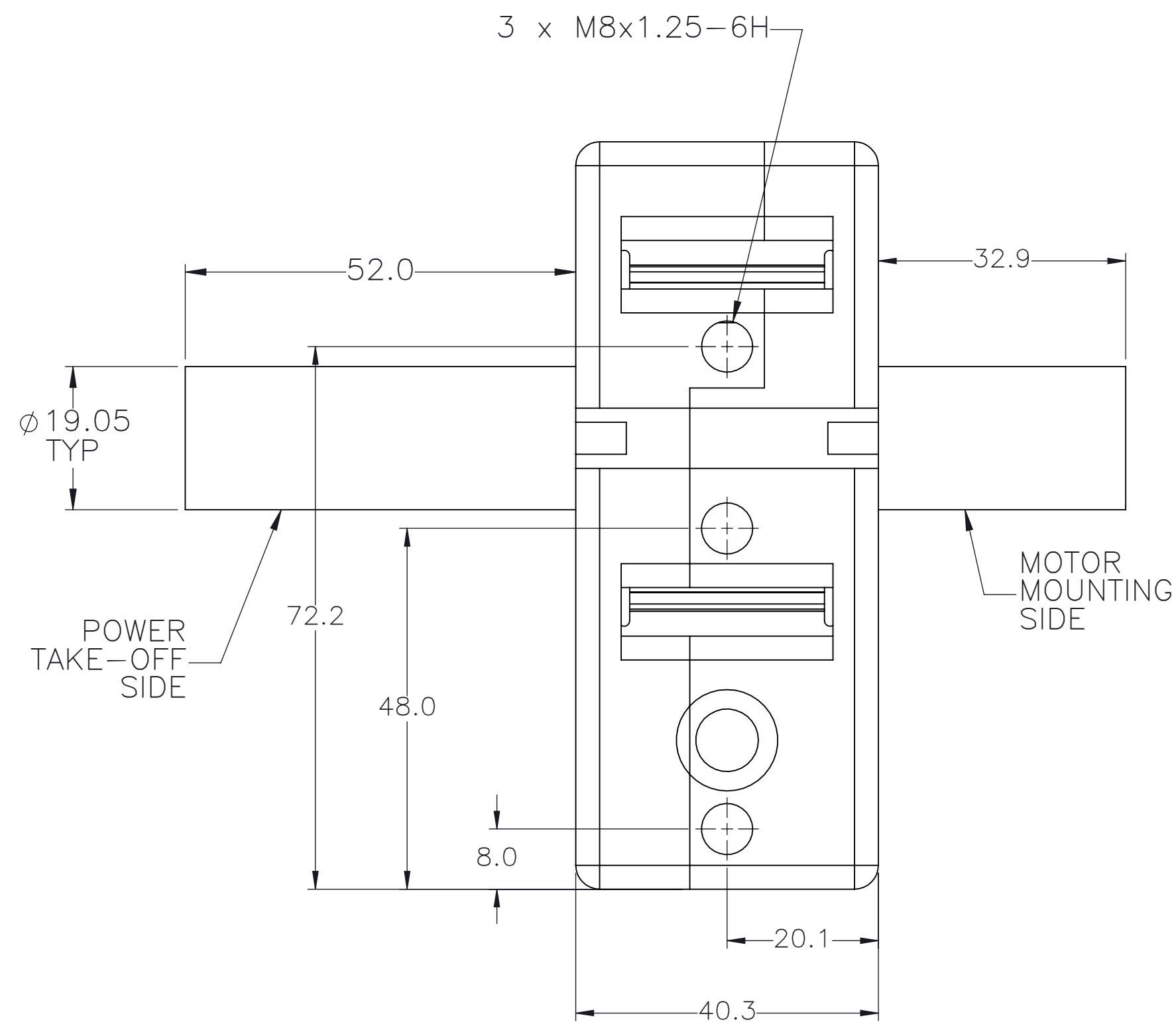
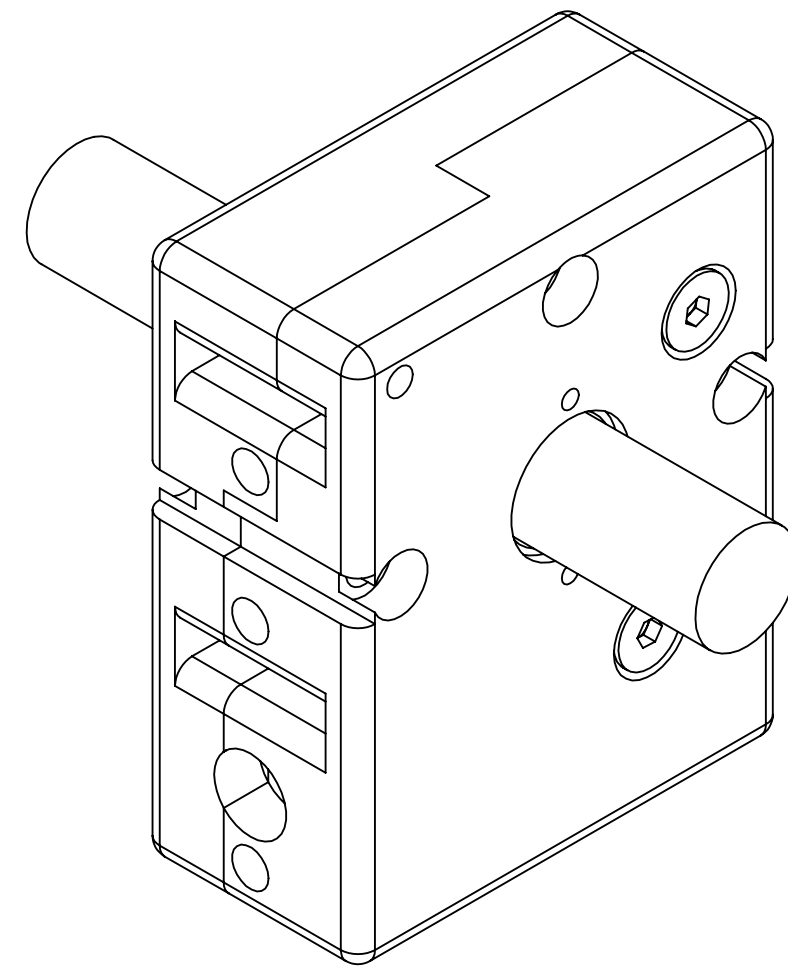
APPROVED: _____

DATE: _____

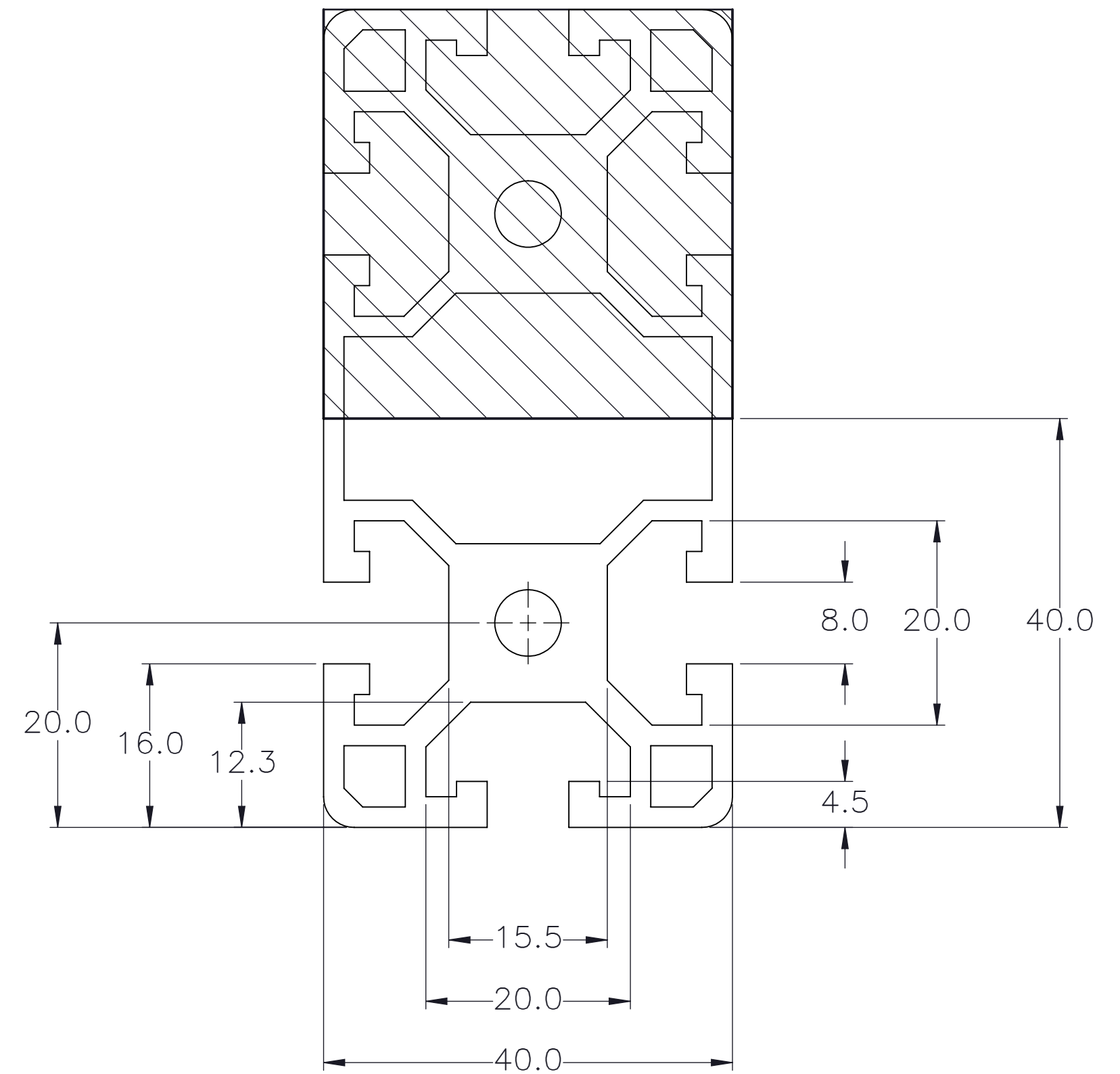
	DRAWN BY: PHW	DATE: 11/26/2017	MATERIAL:	TITLE:
	CHECKED BY: --	DATE: DD/MM/YYYY		MACRON THRUSTER
	LAST SAVED BY: Tim	DATE: 2/23/2021	FINISH:	SCALE 1:1
	<small>UNLESS OTHERWISE SPECIFIED, DIMENSIONS ARE IN INCHES. TOLERANCES UNLESS NOTED OTHERWISE:</small> .X ± .03 .XX ± .010 .XXX ± .005 ANG ± 0°30'			SHEET SIZE C
THIS DRAWING IS THE PROPERTY OF MACRON DYNAMICS. ANY REPRODUCTIONS SHALL BE FOR QUOTATION, MANUFACTURING, OR PURCHASING PURPOSES ONLY. RELEASE OF DRAWINGS TO OTHER CONCERNS DOES NOT CONSTITUTE LICENSING IN ANY WAY. INFORMATION CONTAINED HEREIN IS PROPRIETARY AND CONFIDENTIAL.		SURFACE FINISH \checkmark BREAK ALL SHARP EDGES DIMENSIONAL LIMITS APPLY AFTER FINISHING THIRD ANGLE PROJECTION		SHEET 1 OF 3 PART NUMBER MSA-BT2

SPECIFICATIONS ARE SUBJECT TO CHANGE WITHOUT NOTICE

DOUBLE SHAFTED PULLEY



CUSTOMER ACCESSIBLE MOUNTING FEATURES, T-NUT SLOTS



MACRON DYNAMICS INC

DRAWN BY: PHW	DATE: 11/26/2017	MATERIAL:
CHECKED BY: --	DATE: DD/MM/YYYY	
LAST SAVED BY: Tim	DATE: 2/23/2021	
UNLESS OTHERWISE SPECIFIED, DIMENSIONS ARE IN INCHES, TOLERANCES UNLESS NOTED OTHERWISE:		FINISH:
.X ± .03	.XX ± .010	
.XXX ± .005	ANG ± 0°30'	

TITLE:	MOUNTING DETAILS
SCALE 1:1	SHEET SIZE C

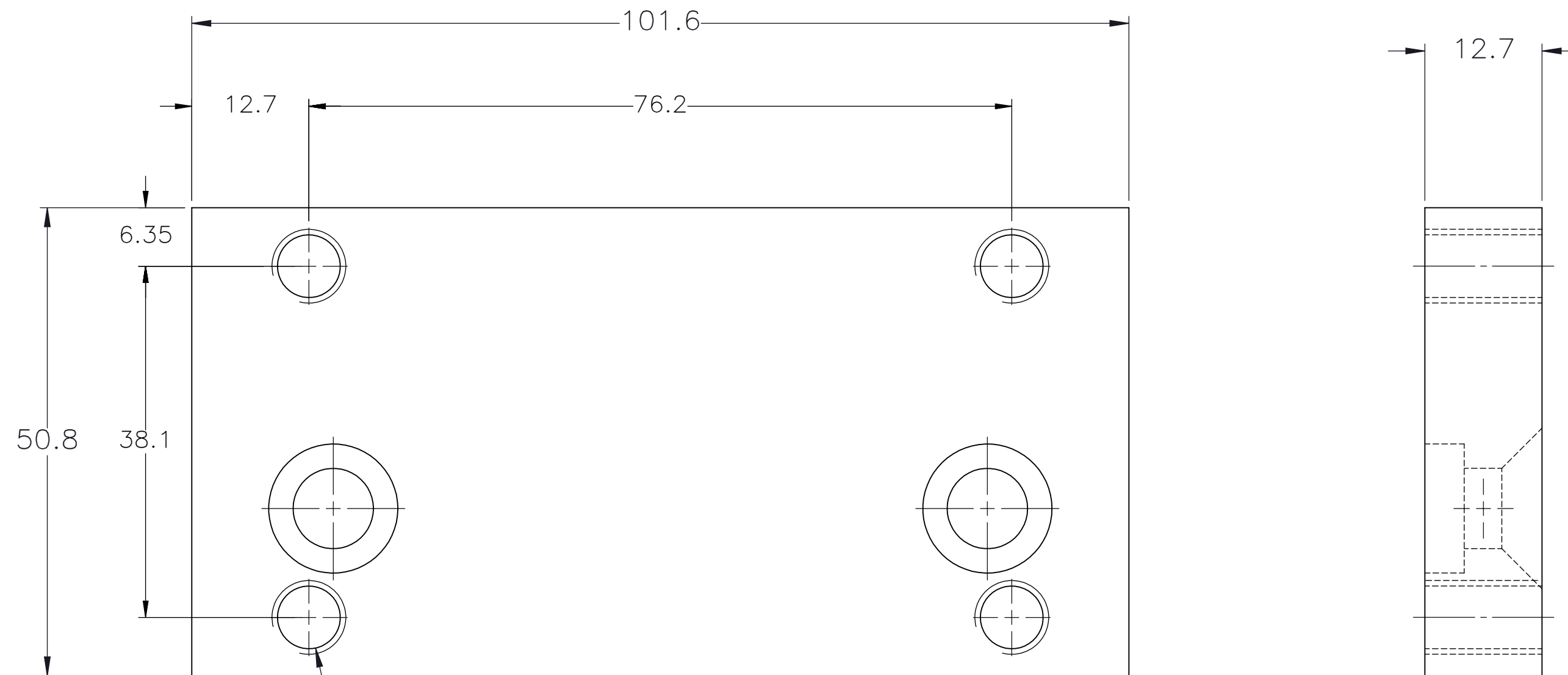
THIS DRAWING IS THE PROPERTY OF MACRON DYNAMICS. ANY REPRODUCTIONS SHALL BE FOR QUOTATION, MANUFACTURING, OR PURCHASING PURPOSES ONLY. RELEASE OF DRAWINGS TO OTHER CONCERNS DOES NOT CONSTITUTE LICENSING IN ANY WAY. INFORMATION CONTAINED HEREIN IS PROPRIETARY AND CONFIDENTIAL.

SURFACE FINISH	63
BREAK ALL SHARP EDGES	
DIMENSIONAL LIMITS APPLY AFTER FINISHING	
THIRD ANGLE PROJECTION	


SHEET	PART NUMBER	SCALE	SHEET SIZE	REV
2 OF 3	MSA-BT2	1:1	C	

SPECIFICATIONS ARE SUBJECT TO CHANGE WITHOUT NOTICE

CUSTOMER ACCESSIBLE MOUNTING FEATURES, END PLATE



4 x Ø 6.80 THRU ALL
M8x1.25 - 6H THRU ALL

 MACRON DYNAMICS INC	DRAWN BY: PHW DATE: 11/26/2017	MATERIAL:	TITLE: PUSH PLATE
	CHECKED BY: -- DATE: DD/MM/YYYY	FINISH:	
	LAST SAVED BY: Tim DATE: 2/23/2021	UNLESS OTHERWISE SPECIFIED, DIMENSIONS ARE IN INCHES: TOLERANCES UNLESS NOTED OTHERWISE: .X ± .762 .XX ± .254 .XXX ± .127 ANG ± 0°30'	SCALE 1:1 SHEET SIZE C
THIS DRAWING IS THE PROPERTY OF MACRON DYNAMICS. ANY REPRODUCTIONS SHALL BE FOR QUOTATION, MANUFACTURING, OR PURCHASING PURPOSES ONLY. RELEASE OF DRAWINGS TO OTHER CONCERNS DOES NOT CONSTITUTE LICENSING IN ANY WAY. INFORMATION CONTAINED HEREIN IS PROPRIETARY AND CONFIDENTIAL	SURFACE FINISH <input checked="" type="checkbox"/>	SHEET 3 OF 3	PART NUMBER MSA-BT2
	BREAK ALL SHARP EDGES DIMENSIONAL LIMITS APPLY AFTER FINISHING THIRD ANGLE PROJECTION		REV