

# MSA-BT1-B-GB- -

PULLEY PITCH DIAMETER	33.42mm (1.316")
PULLEY WIDTH	16.3mm (.640")
PULLEY MATERIAL	STEEL
BELT WEIGHT (kg)	$((\text{TRAVEL IN METERS} \times 2) + .51) \times .04$
TRAVEL PER REV.	105mm
TRAVEL MIN.	150mm
TRAVEL MAX.	1000mm
CART/PUSHER WEIGHT (kg)	$(\text{TRAVEL IN METERS} \times .45) + .48$
SYSTEM WEIGHT (kg)	$(\text{TRAVEL IN METERS} \times 1.8) + 2.1$

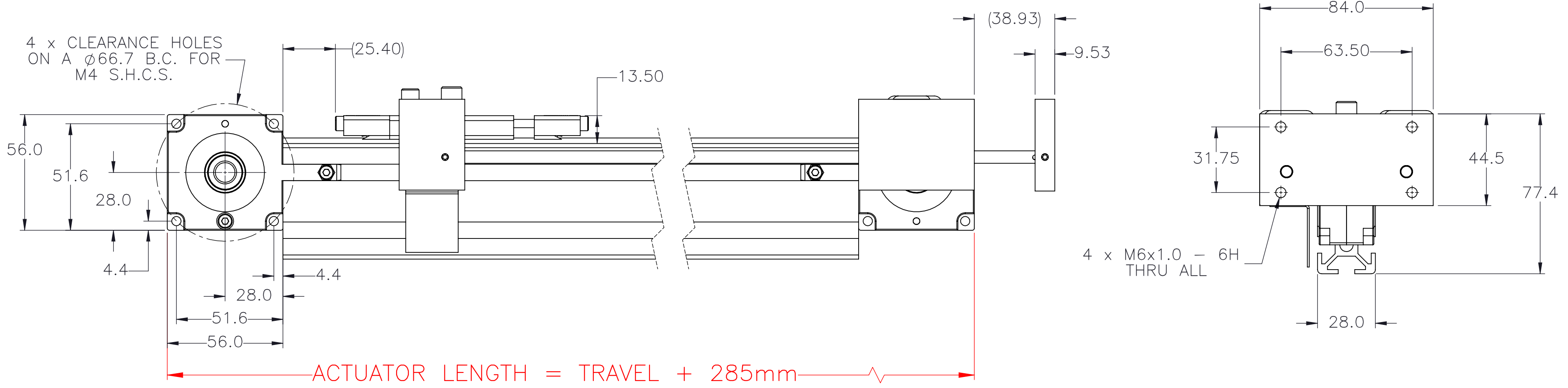
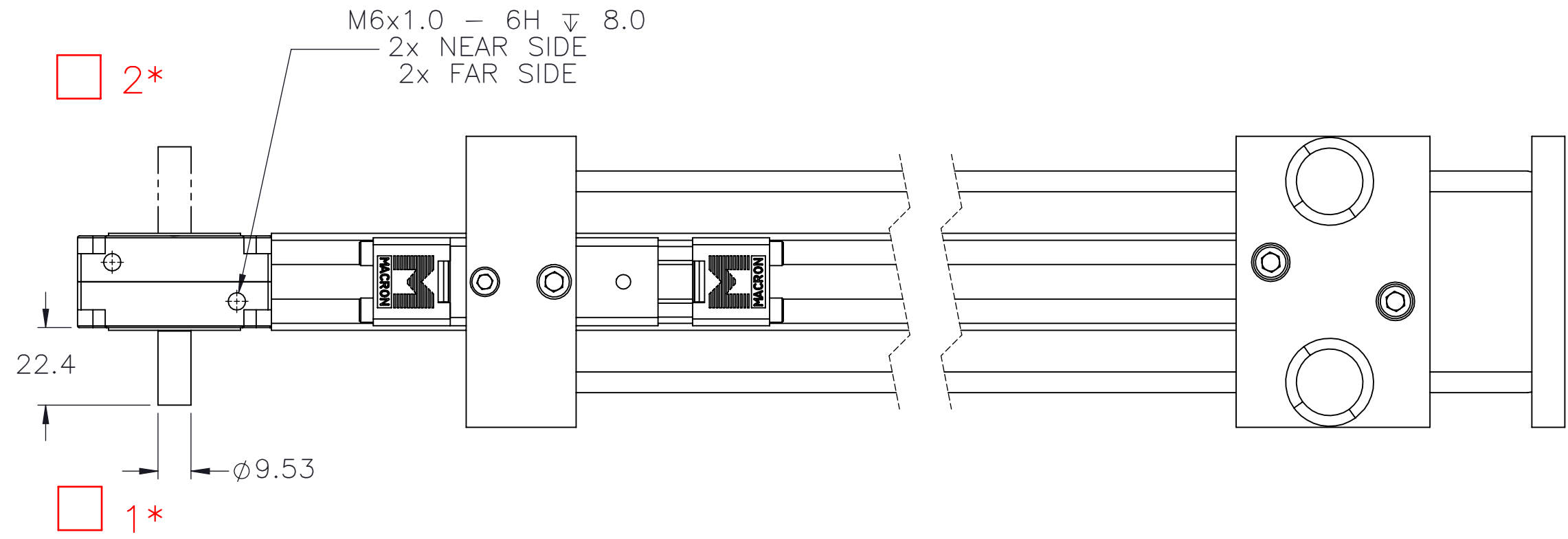
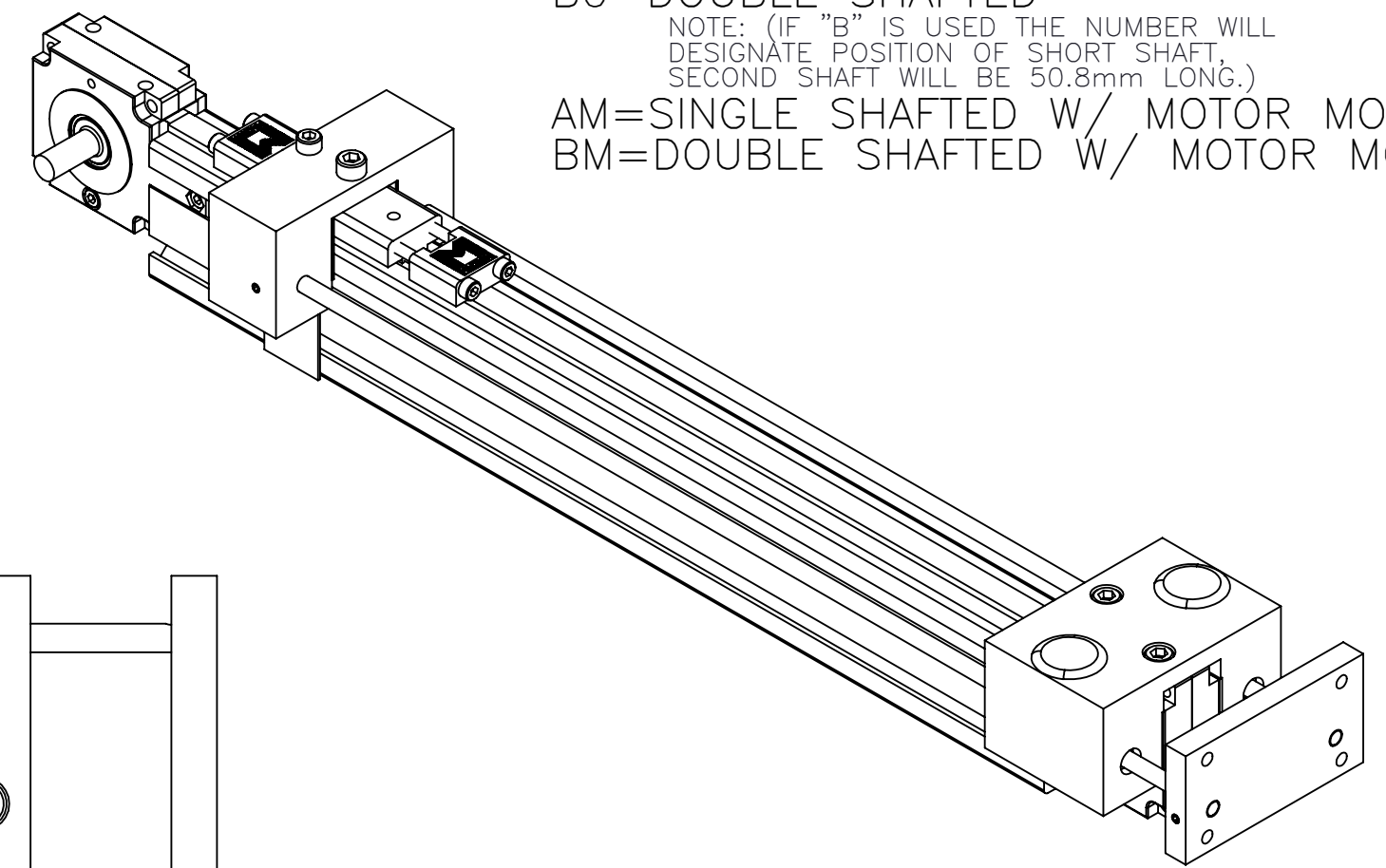
**ENTER**  
TRAVEL IN INCREMENTS OF 25mm

**SELECT**  
DRIVE SHAFT LOCATION\*

**SHAFTING TYPE**  
A0= SINGLE SHAFTED  
B0= DOUBLE SHAFTED

NOTE: (IF "B" IS USED THE NUMBER WILL DESIGNATE POSITION OF SHORT SHAFT. SECOND SHAFT WILL BE 50.8mm LONG.)

AM= SINGLE SHAFTED W/ MOTOR MOUNT  
BM= DOUBLE SHAFTED W/ MOTOR MOUNT



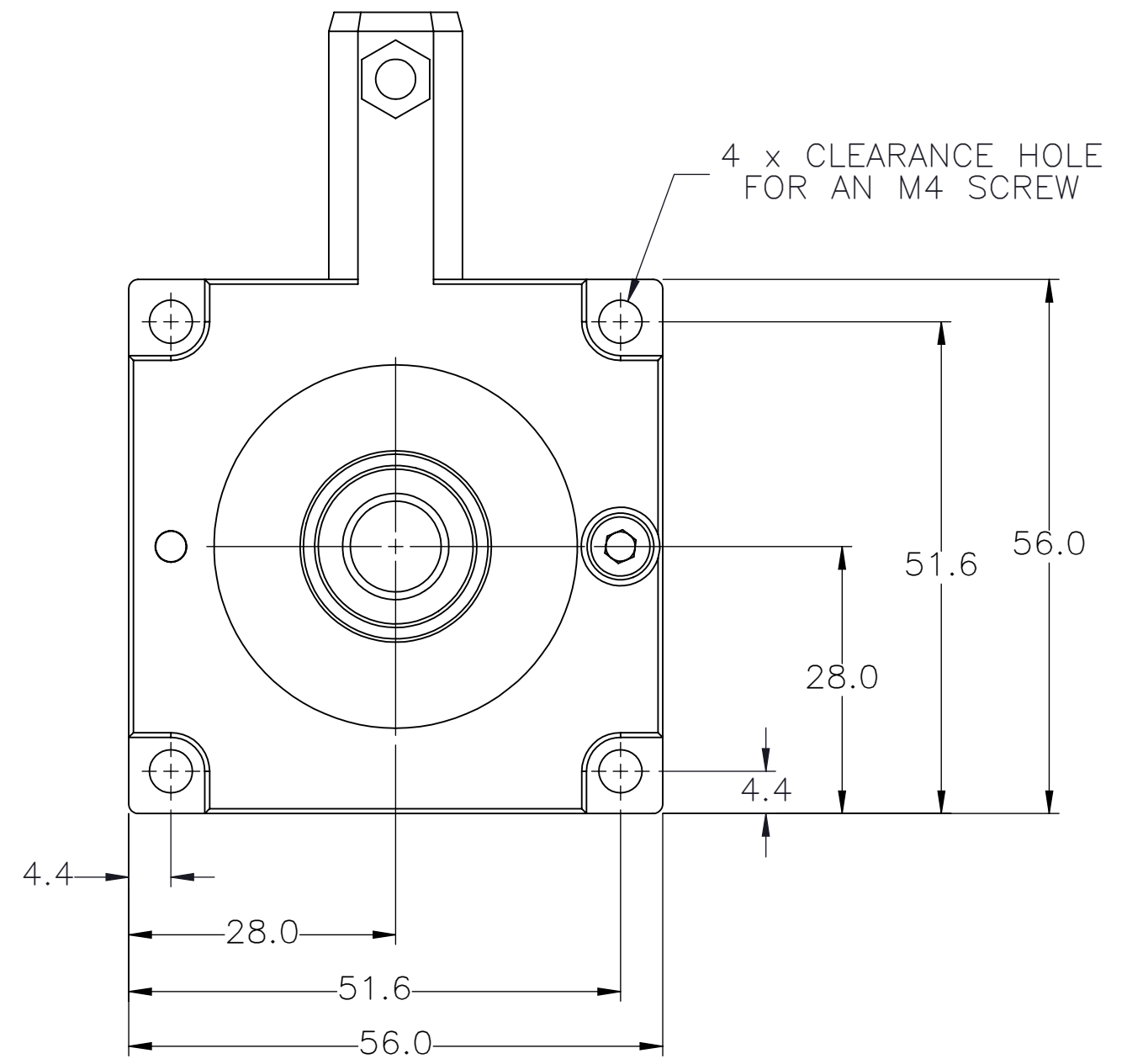
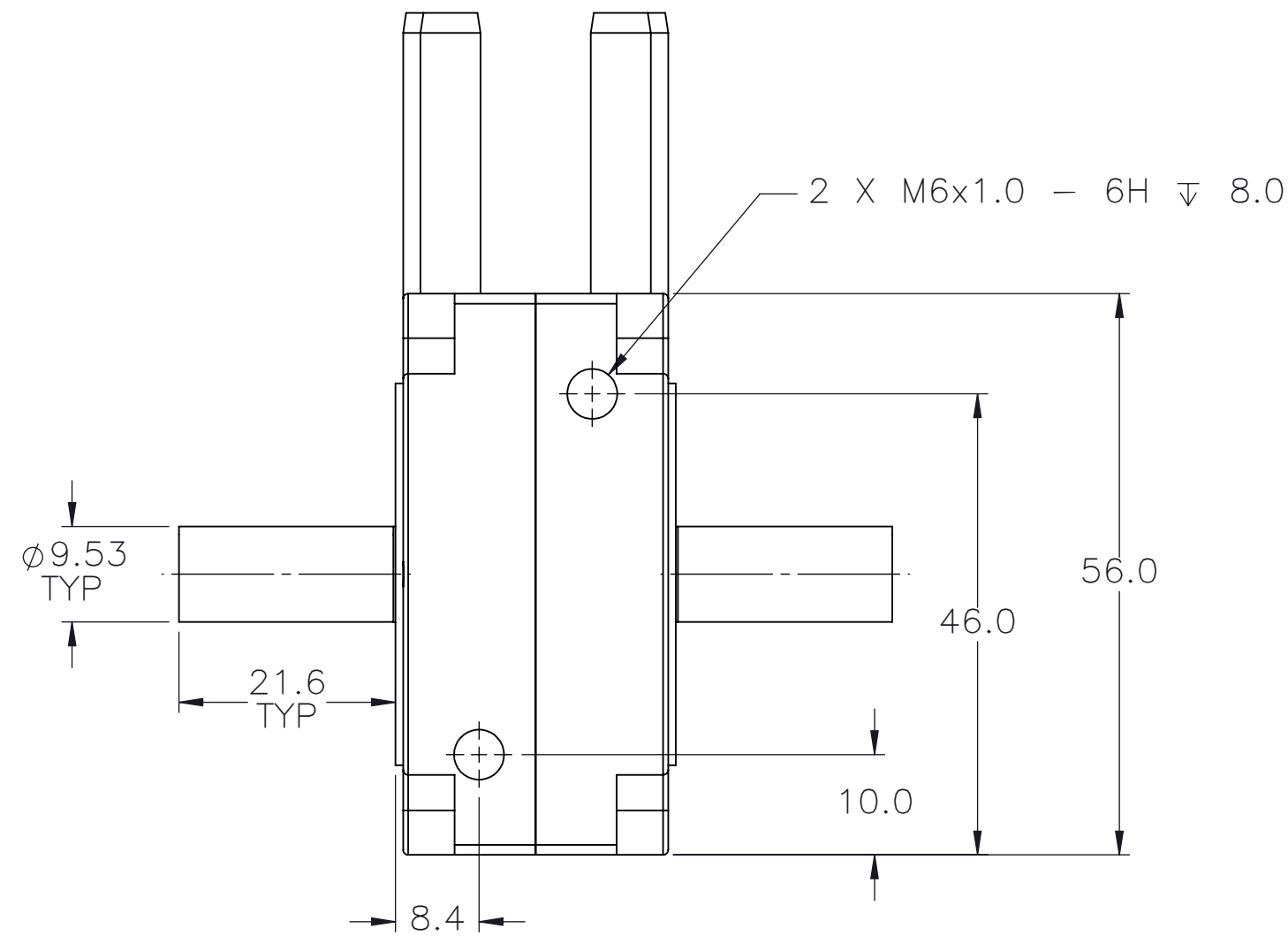
APPROVED: \_\_\_\_\_

DATE: \_\_\_\_\_

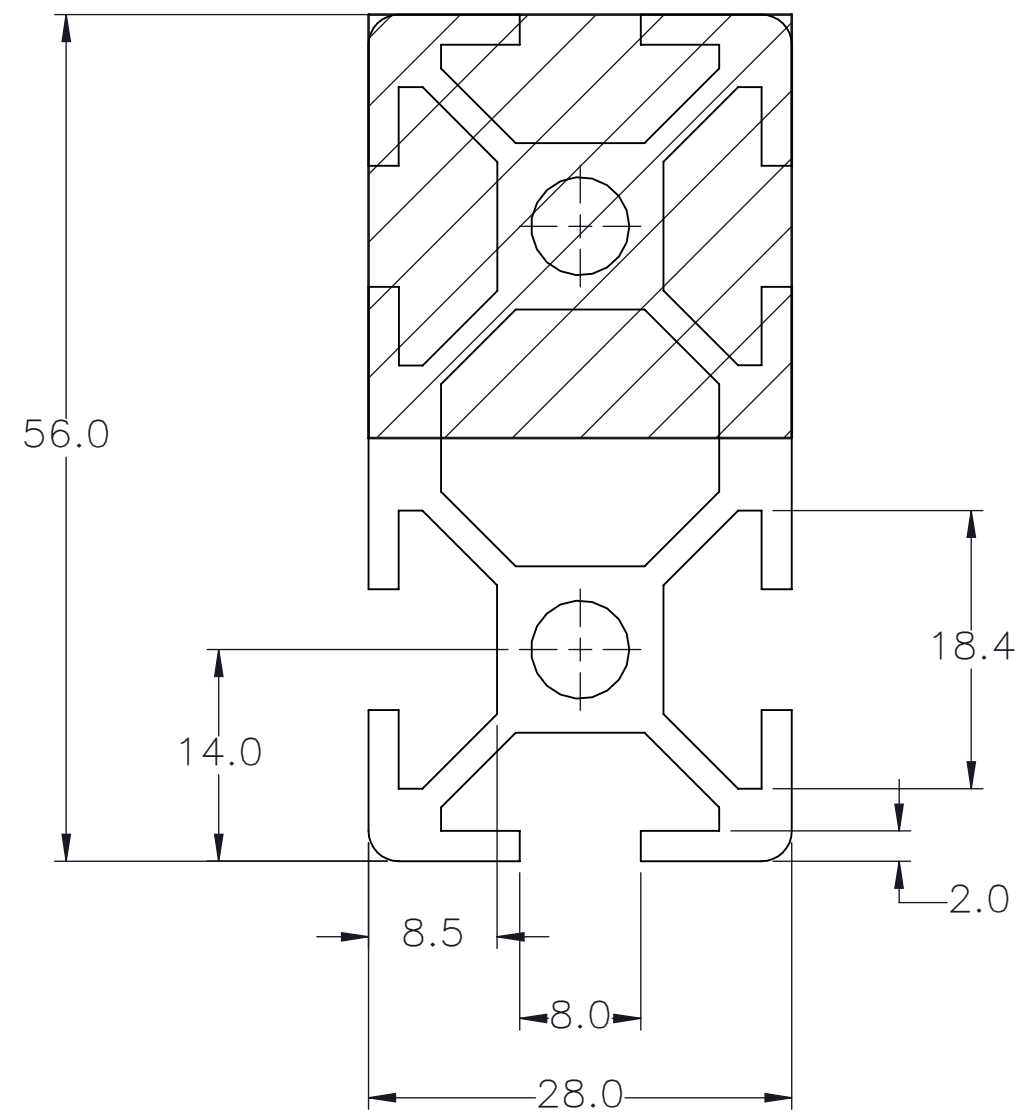
 <b>MACRON DYNAMICS INC</b>	DRAWN BY: PHW    DATE: 11/26/2017 CHECKED BY: --    DATE: DD/MM/YYYY LAST SAVED BY: Tim    DATE: 2/23/2021	MATERIAL:	TITLE:
	UNLESS OTHERWISE SPECIFIED, DIMENSIONS ARE IN INCHES. TOLERANCES UNLESS NOTED OTHERWISE: .X $\pm$ .03 .XX $\pm$ .010 .XXX $\pm$ .005 ANG $\pm$ 0°30'	FINISH:	MACRON THRUSTER
	SURFACE FINISH $\nabla$ 63 BREAK ALL SHARP EDGES DIMENSIONAL LIMITS APPLY AFTER FINISHING THIRD ANGLE PROJECTION	SHEET: 1 OF 3 PART NUMBER:	SCALE: 1:1    SHEET SIZE: C REV:
	MSA-BT1		

SPECIFICATIONS ARE SUBJECT TO CHANGE WITHOUT NOTICE


# DOUBLE SHAFTED PULLEY



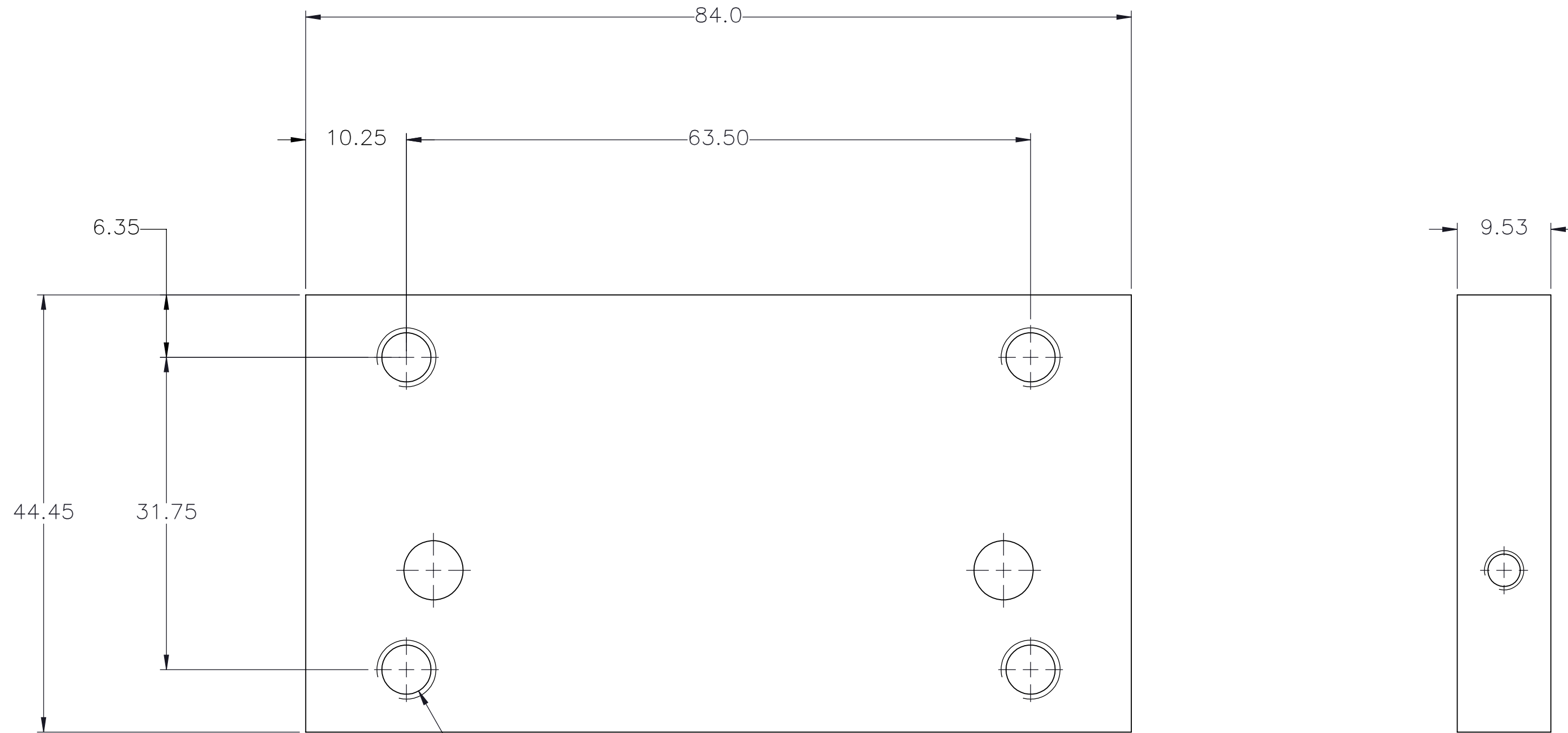
# ACTUATOR BODY T-SLOT MOUNTING FEATURES




SPECIFICATIONS ARE SUBJECT TO CHANGE WITHOUT NOTICE

 <b>MACRON DYNAMICS INC</b>	DRAWN BY: PHW CHECKED BY: -- LAST SAVED BY: Tim	DATE: 11/26/2017 DATE: DD/MM/YYYY DATE: 2/23/2021	MATERIAL:	TITLE: PULLEY ASSEMBLY 28-12C, DOUBLE SHAFTED, 3/8"
	UNLESS OTHERWISE SPECIFIED, DIMENSIONS ARE IN INCHES. TOLERANCES UNLESS NOTED OTHERWISE:		FINISH:	SCALE 1:1   SHEET SIZE C
	SURFACE FINISH $\nabla$ 63 BREAK ALL SHARP EDGES DIMENSIONAL LIMITS APPLY AFTER FINISHING THIRD ANGLE PROJECTION		SHEET 2 OF 3	PART NUMBER MSA-BT1

# CUSTOMER ACCESSIBLE MOUNTING FEATURES, END PLATE



4 x  $\phi$  5.00 THRU ALL  
M6x1.0 - 6H THRU ALL

 <b>MACRON DYNAMICS INC</b>	DRAWN BY: PHW      DATE: 11/26/2017	MATERIAL:	TITLE:
	CHECKED BY: --      DATE: DD/MM/YYYY	ALUM. JIG PLATE	PUSH PLATE
	LAST SAVED BY: Tim      DATE: 2/23/2021	FINISH:	SCALE: 1:1    SHEET SIZE: C
	UNLESS OTHERWISE SPECIFIED, DIMENSIONS ARE IN INCHES: TOLERANCES UNLESS NOTED OTHERWISE:	.X ± .762 .XX ± .254 .XXX ± .127 ANG ± 0°30'	BLACK ANODIZE
THIS DRAWING IS THE PROPERTY OF MACRON DYNAMICS. ANY REPRODUCTIONS SHALL BE FOR QUOTATION, MANUFACTURING, OR PURCHASING PURPOSES ONLY. RELEASE OF DRAWINGS TO OTHER CONCERNS DOES NOT CONSTITUTE LICENSING IN ANY WAY. INFORMATION CONTAINED HEREIN IS PROPRIETARY AND CONFIDENTIAL.	SURFACE FINISH: $\checkmark$ BREAK ALL SHARP EDGES DIMENSIONAL LIMITS APPLY AFTER FINISHING THIRD ANGLE PROJECTION	SHEET: 3 OF 3      PART NUMBER: Z00122403	REV: