

MRA-RTU-1-00- -

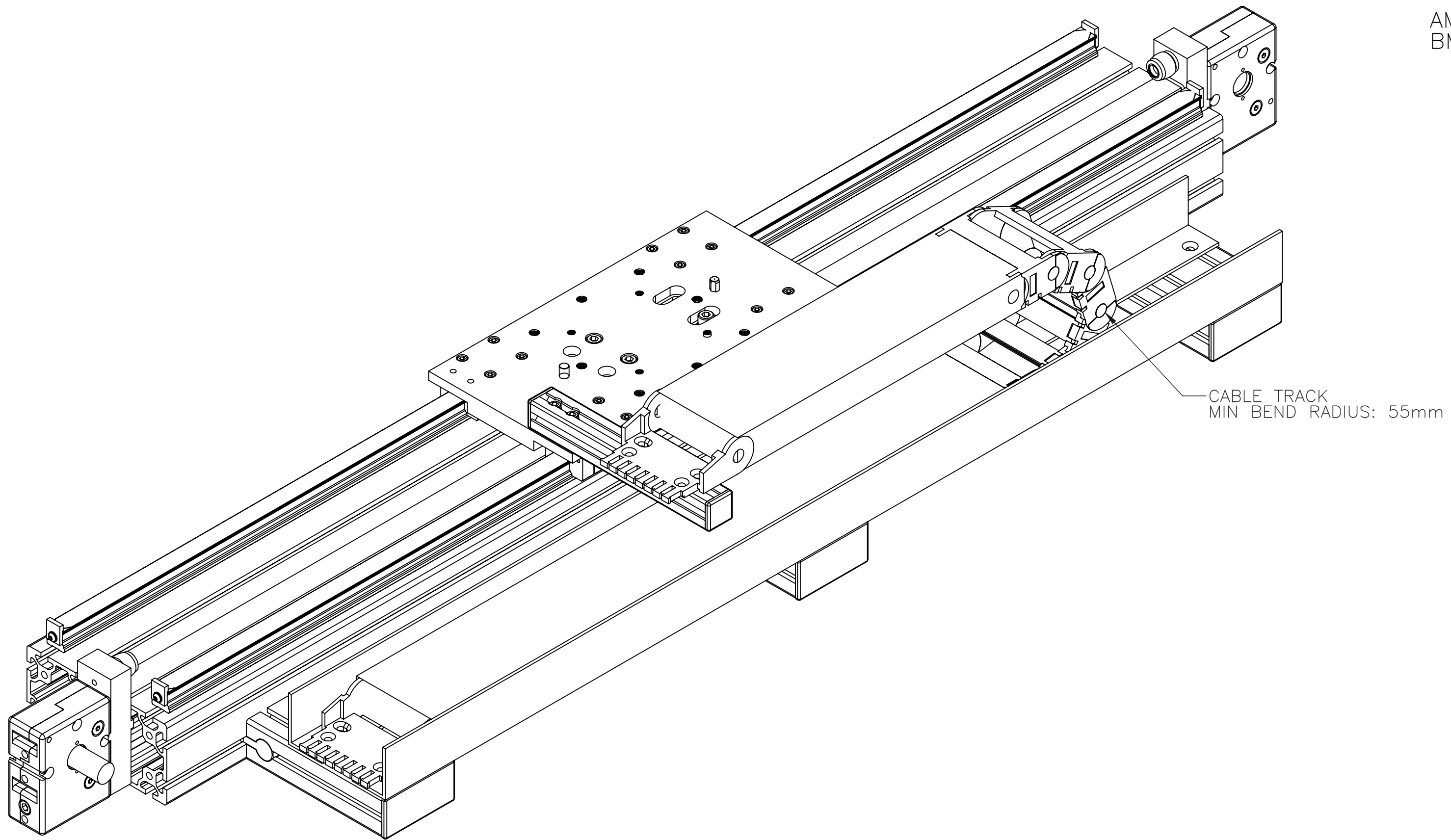
ENTER
TRAVEL IN INCREMENTS OF 25mm
TRAVEL LIMITS: 250mm-5575mm*

SELECT
DRIVE SHAFT LOCATION, SEE PAGE 2

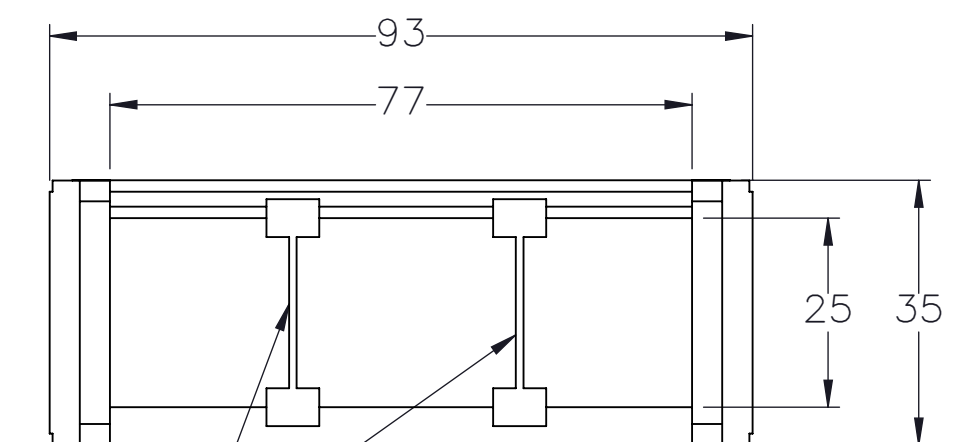
SHAFTING TYPE
A0=SINGLE SHAFTED
B0=DOUBLE SHAFTED

AM=SINGLE SHAFTED W/ MOTOR MOUNT
BM=DOUBLE SHAFTED W/ MOTOR MOUNT

IF TRAVEL IS OUTSIDE LIMITS LISTED, CONTACT MACRON



CABLE TRACK CROSS SECTION




(2x) SEPARATORS
(EVERY OTHER LINK)

APPROVED: _____
SIGN & PRINT

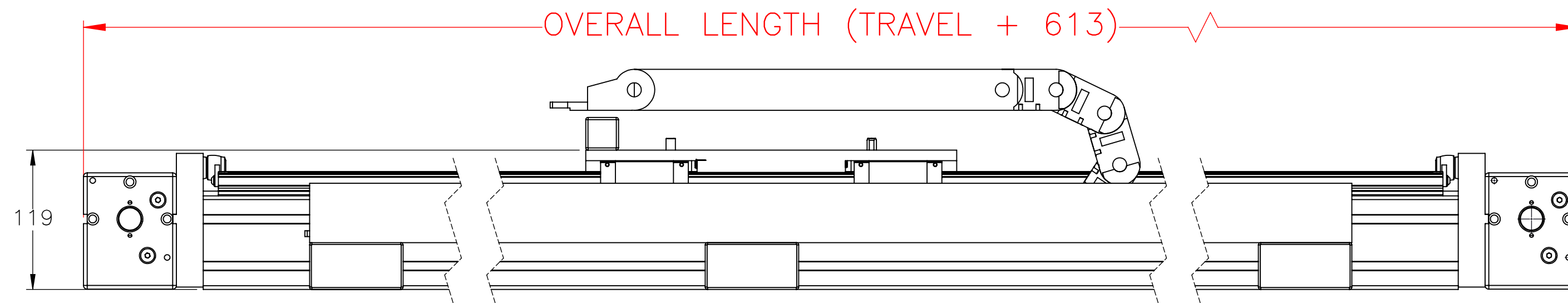
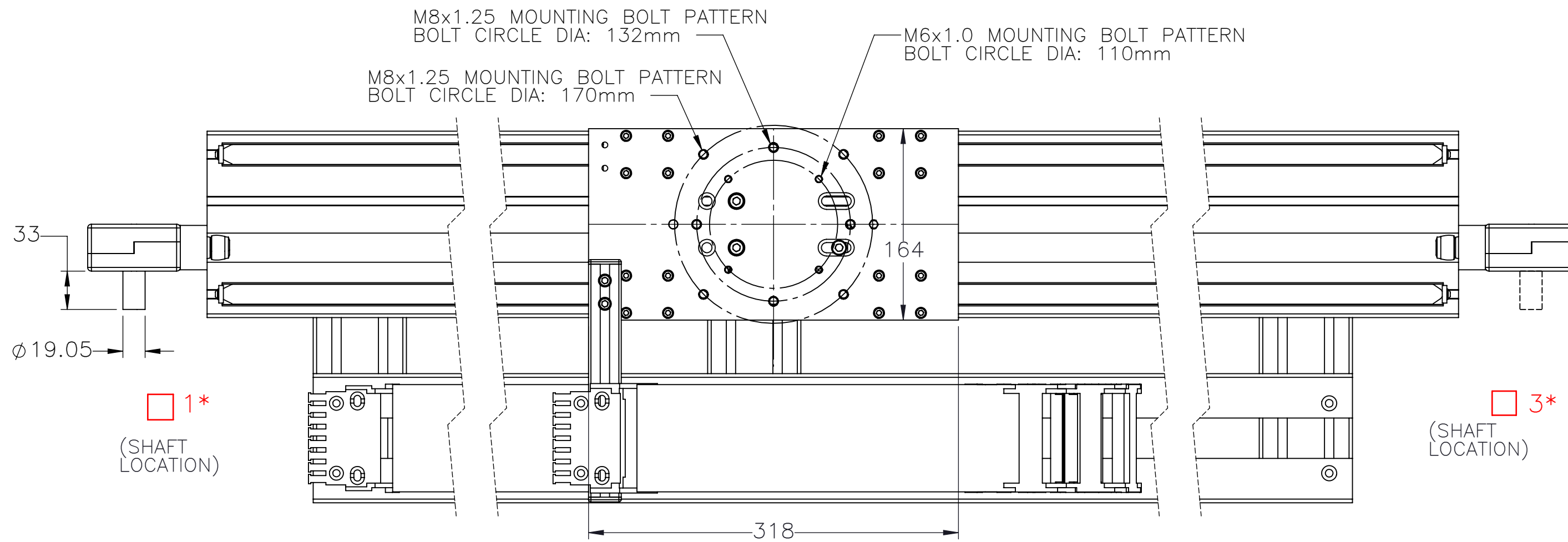
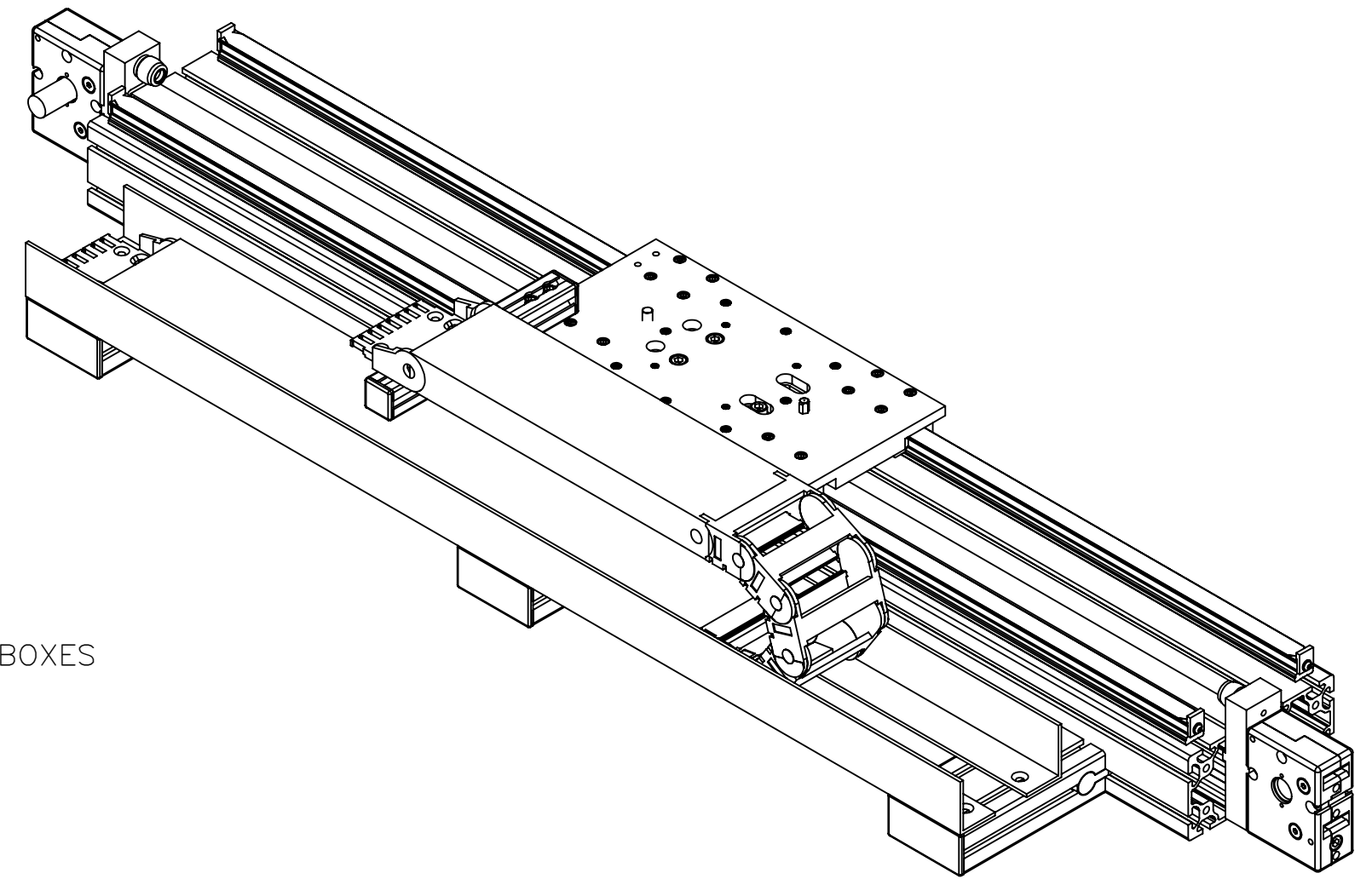
DATE: _____


PO:REFERENCE#: _____

 MACRON DYNAMICS INC	DRAWN BY: TH DATE: 3/6/2012	MATERIAL:	TITLE: MACRON RTU SYSTEM
	CHECKED BY: -- DATE: DD/MM/YYYY	FINISH:	
	LAST SAVED BY: Tim DATE: 12/21/2021	UNLESS OTHERWISE SPECIFIED, DIMENSIONS ARE IN MILLIMETER. TOLERANCES UNLESS NOTED OTHERWISE:	SCALE 1:1 SHEET SIZE C
	SURFACE FINISH \checkmark	BREAK ALL SHARP EDGES DIMENSIONAL LIMITS APPLY AFTER FINISHING THIRD ANGLE PROJECTION	SHEET 1 OF 3 PART NUMBER MRA-RTU-1-00-XXX-XXXXX

PROPERTY	BASE VALUE (T=250mm)
MOVING MASS	4.75kg(+0.0253kg/25mm)
BELT MASS	0.274kg(+0.00313kg/25mm)
PULLEY PITCH DIAMETER	47.75mm (1.880")
PULLEY WIDTH	28.9mm (1.138")
PULLEY MATERIAL	STEEL
BELT WEIGHT (kg)	$((\text{TRAVEL IN METERS} \times 2) + 1.2) \times 0.12$
TRAVEL PER REV.	150mm
TRAVEL MIN.	150mm
TRAVEL MAX.	5650mm
CART WEIGHT (kg)	3.8
SYSTEM WEIGHT (kg)	$((\text{TRAVEL IN METERS}) \times 26.5) + 16.5$

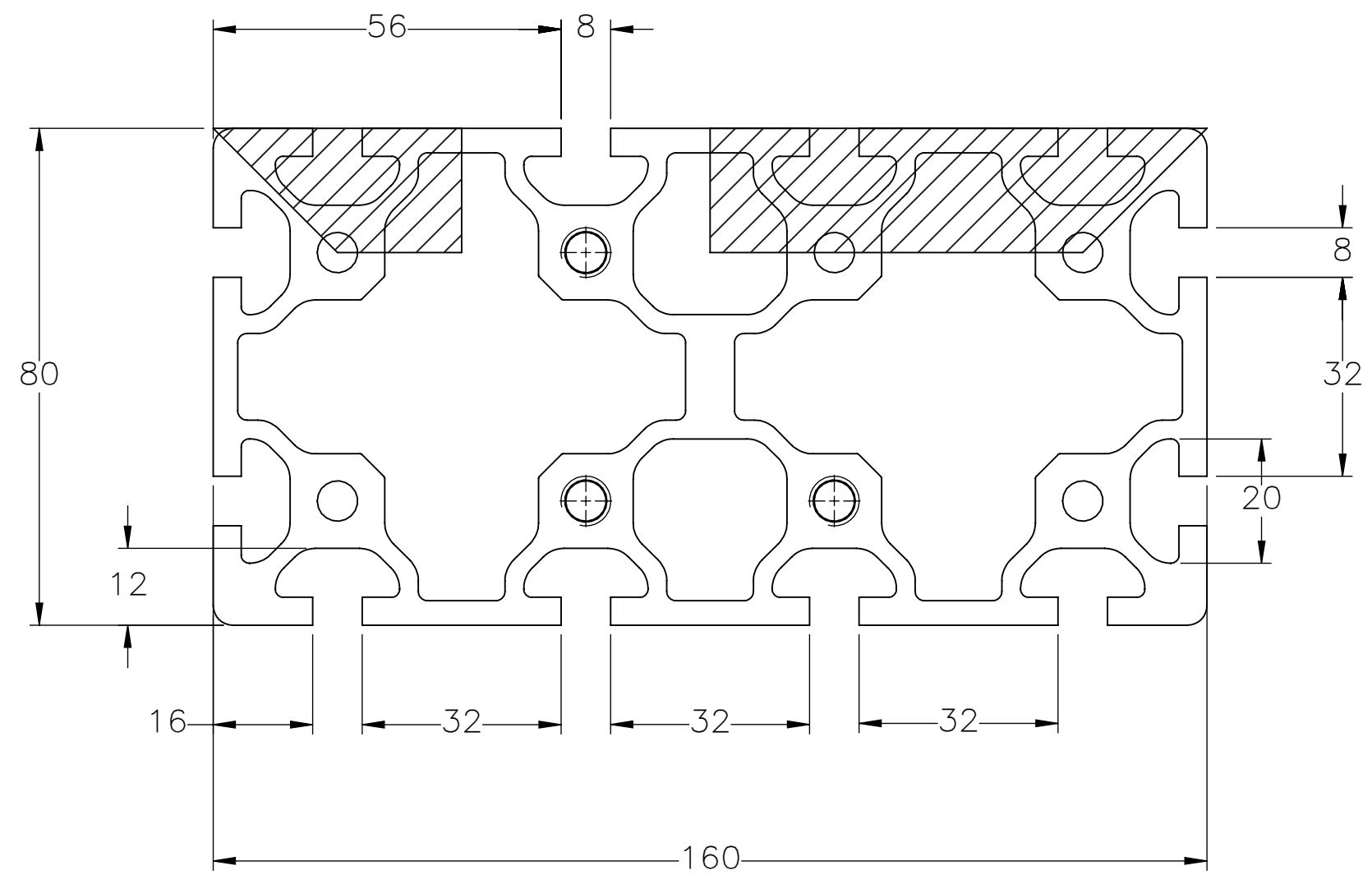
MASSES DO NOT INCLUDE: CABLES FOR CABLE TRACK OR GEARBOXES



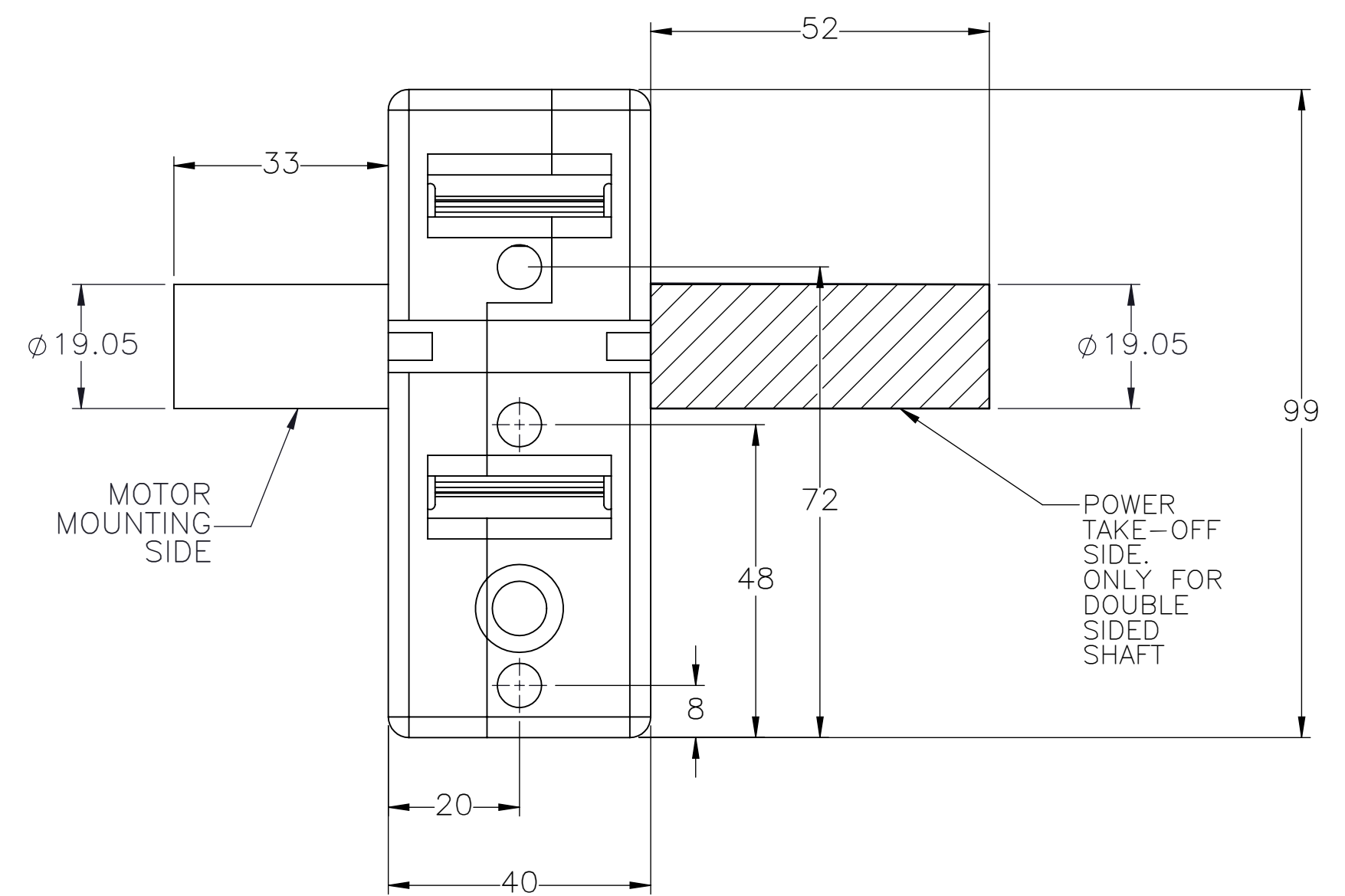
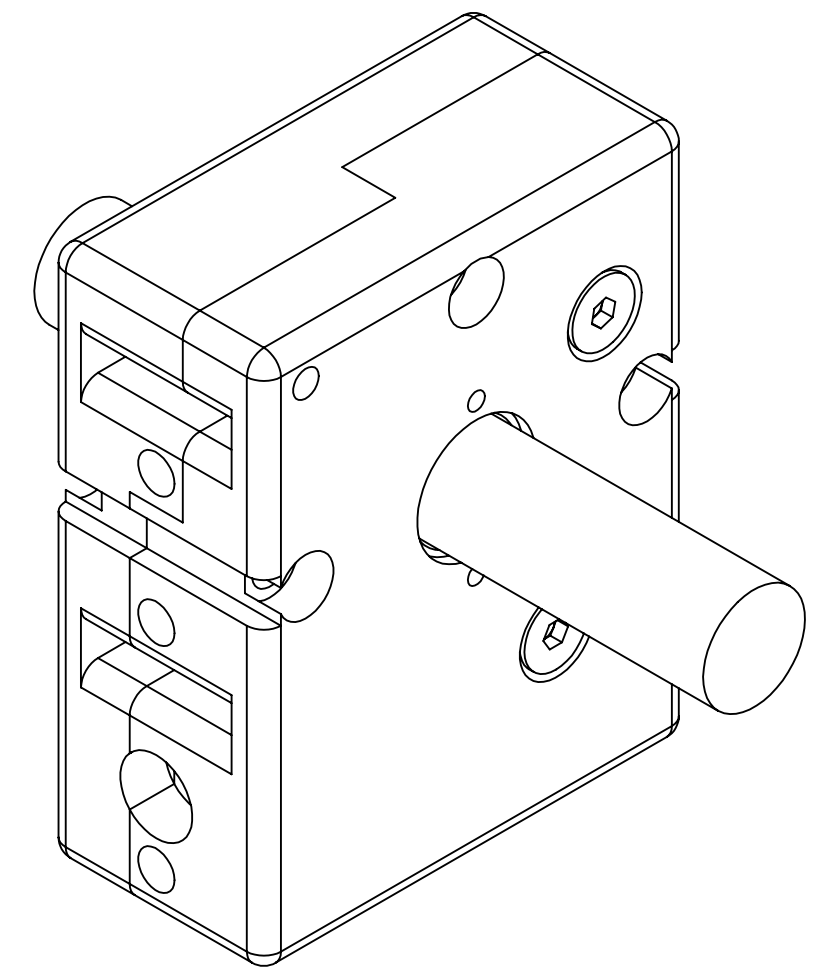
 MACRON DYNAMICS INC	DRAWN BY: PHW CHECKED BY: -- LAST SAVED BY: Tim	DATE: 3/6/2012 DATE: DD/MM/YYYY DATE: 12/21/2021	MATERIAL: FINISH:	TITLE: MACRON RTU SYSTEM
	<small>UNLESS OTHERWISE SPECIFIED, DIMENSIONS ARE IN MILLIMETERS. TOLERANCES UNLESS NOTED OTHERWISE:</small>		.X ± .762 .XX ± .254 .XXX ± .127 ANG ± 0°30'	SCALE 1:1 SHEET SIZE C
	SURFACE FINISH \checkmark		SHEET 2 OF 3	PART NUMBER MRA-RTU-1-00-XXX-XXXXX
	<small>THIS DRAWING IS THE PROPERTY OF MACRON DYNAMICS. ANY REPRODUCTIONS SHALL BE FOR QUOTATION, MANUFACTURING, OR PURCHASING PURPOSES ONLY. RELEASE OF DRAWINGS TO OTHER CONCERNS DOES NOT CONSTITUTE LICENSING IN ANY WAY. INFORMATION CONTAINED HEREIN IS PROPRIETARY AND CONFIDENTIAL.</small>		BREAK ALL SHARP EDGES DIMENSIONAL LIMITS APPLY AFTER FINISHING THIRD ANGLE PROJECTION	REV

SPECIFICATIONS ARE SUBJECT TO CHANGE WITHOUT NOTICE

ACTUATOR BODY MOUNTING FEATURES T-NUT SLOTS



SHAFTED PULLEY



MACRON DYNAMICS INC

DRAWN BY: PHW	DATE: 3/6/2012
CHECKED BY: --	DATE: DD/MM/YYYY
LAST SAVED BY: Tim	DATE: 12/21/2021

UNLESS OTHERWISE SPECIFIED, DIMENSIONS ARE IN MILLIMETERS. TOLERANCES UNLESS NOTED OTHERWISE:	.X ± .762 .XX ± .254 .XXX ± .127 ANG ± 0°30'
--	---

SURFACE FINISH $\sqrt{\text{V}}$
BREAK ALL SHARP EDGES
DIMENSIONAL LIMITS APPLY AFTER FINISHING
THIRD ANGLE PROJECTION

MATERIAL:
FINISH:

SCALE 1:1 SHEET SIZE C

SHEET 3 OF 3

TITLE: MACRON RTU SYSTEM
PART NUMBER: MRA-RTU-1-00-XXX-XXXXX
REV

SPECIFICATIONS ARE SUBJECT TO CHANGE WITHOUT NOTICE

THIS DRAWING IS THE PROPERTY OF MACRON DYNAMICS. ANY REPRODUCTIONS SHALL BE FOR QUOTATION, MANUFACTURING, OR PURCHASING PURPOSES ONLY. RELEASE OF DRAWINGS TO OTHER CONCERNS DOES NOT CONSTITUTE LICENSING IN ANY WAY. INFORMATION CONTAINED HEREIN IS PROPRIETARY AND CONFIDENTIAL.