

GEARBOX MODELS

X AXIS: VC-T-120-____
RATIO: _____

Z AXIS: VC-T-120-____
RATIO: _____

'X' MOTOR INFORMATION
MANUFACTURER: _____
MODEL: _____

'Z' MOTOR INFORMATION
MANUFACTURER: _____
MODEL: _____

SENSOR INFORMATION X-AXIS:
HOME-QTY ____ 244-____-____-____
EOT-QTY ____ 244-____-____-____

SENSOR INFORMATION Z-AXIS:
HOME-QTY ____ 244-____-____-____
EOT-QTY ____ 244-____-____-____

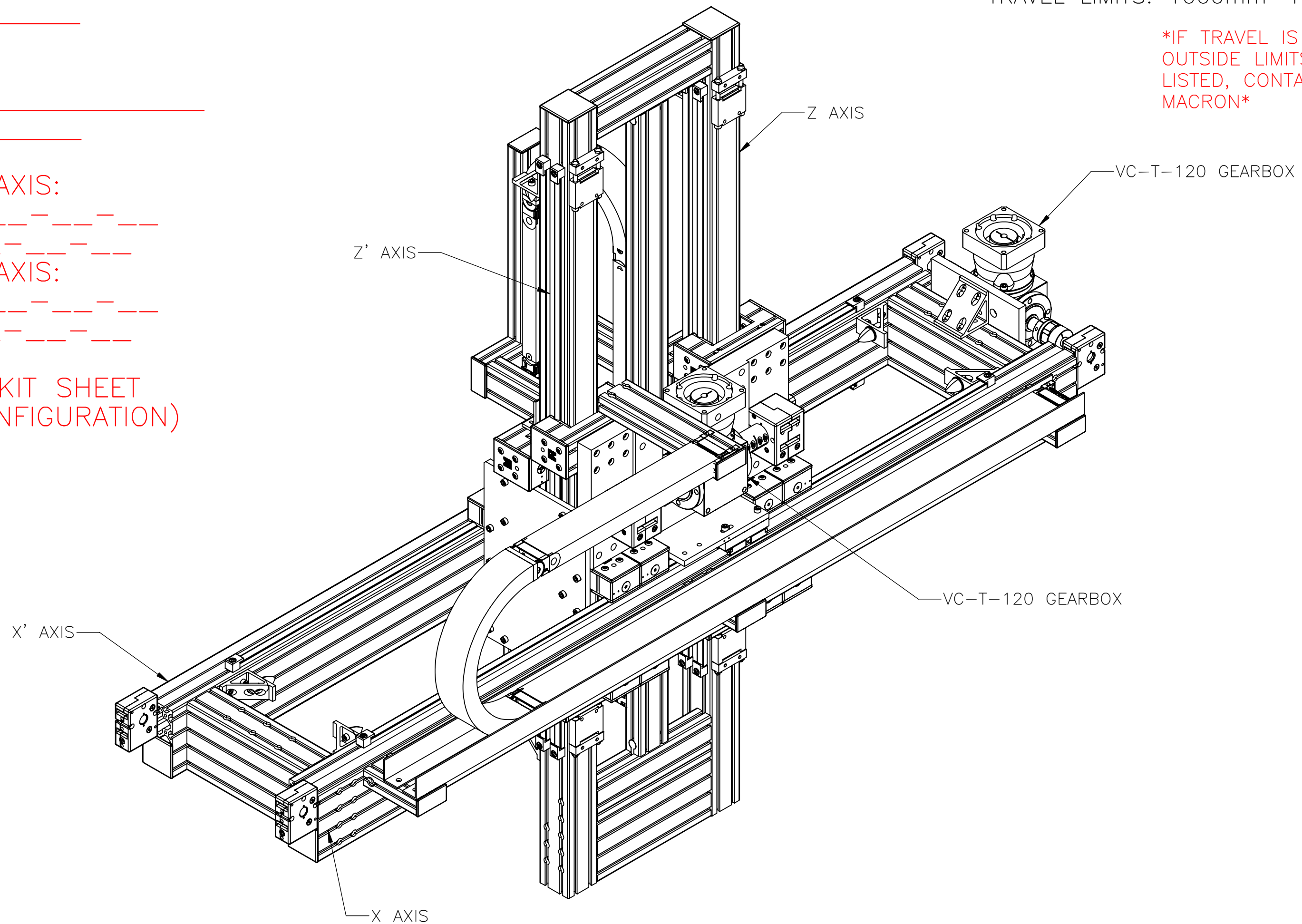
(SEE T-SLOT SENSOR KIT SHEET
FOR PART NUMBER CONFIGURATION)

MGS-UC3- [] -X- []

ENTER Z-AXIS TRAVEL
TRAVEL IN INCREMENTS OF 250mm
TRAVEL LIMITS: 250mm-1000mm

ENTER X-AXIS TRAVEL
TRAVEL IN INCREMENTS OF 500mm
TRAVEL LIMITS: 1000mm-4750mm


*IF TRAVEL IS
OUTSIDE LIMITS
LISTED, CONTACT
MACRON*



APPROVED: _____
SIGN & PRINT

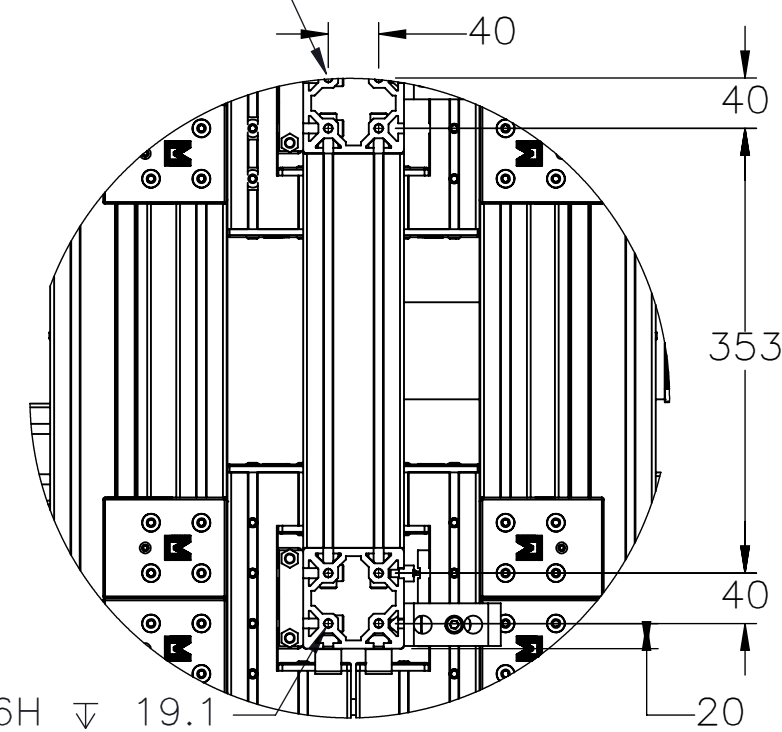
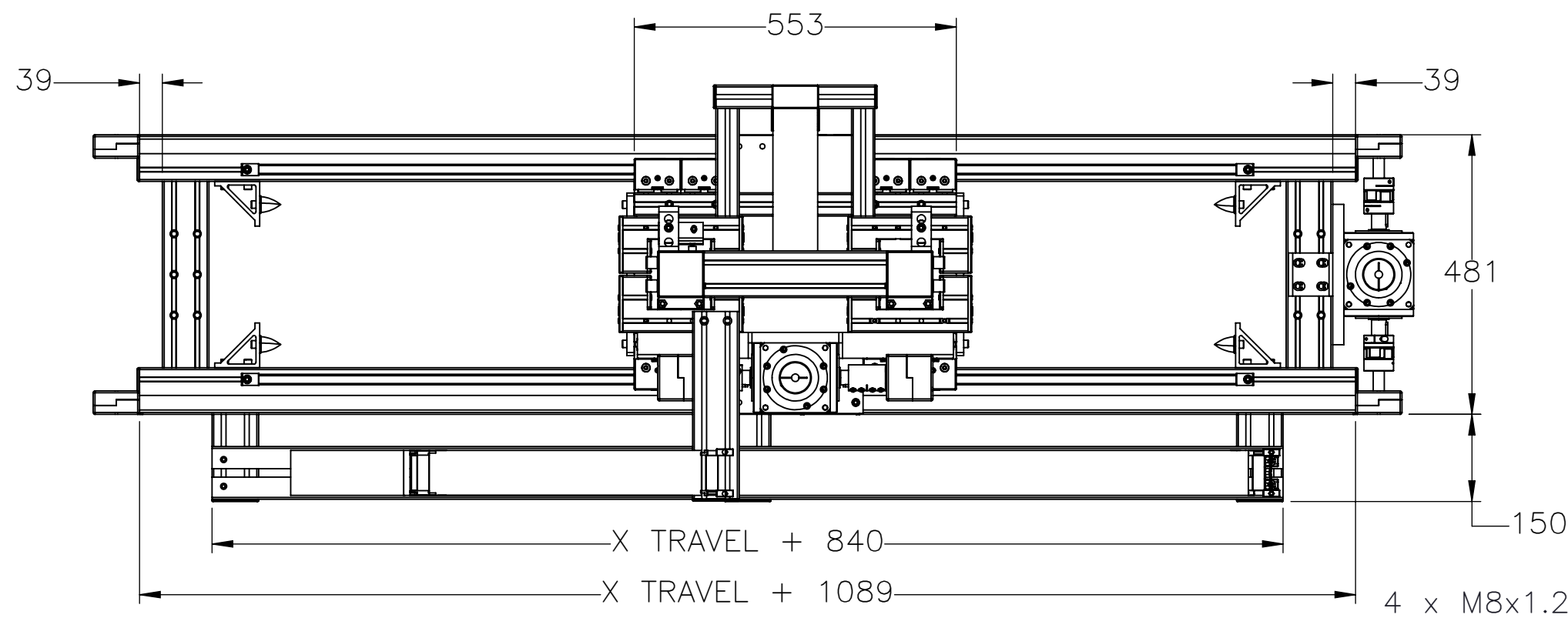
DATE: _____

PO:REFERENCE#: _____

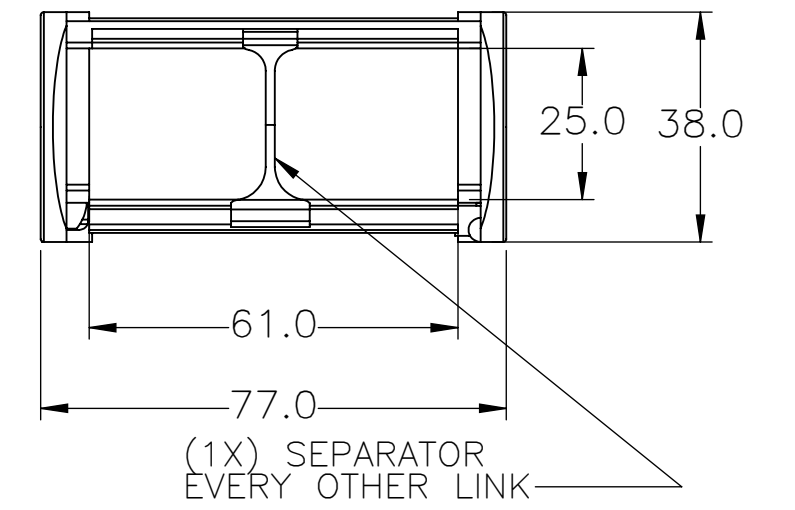
 MACRON DYNAMICS INC	DRAWN BY: PHW CHECKED BY: -- LAST SAVED BY: Tim	DATE: 4/9/2013 DATE: DD/MM/YYYY DATE: 6/10/2022	MATERIAL:	TITLE: MACRON UC3 GANTRY	
	UNLESS OTHERWISE SPECIFIED, DIMENSIONS ARE IN INCHES. TOLERANCES UNLESS NOTED OTHERWISE:		FINISH:	SCALE 1:1 SHEET SIZE C	
	SURFACE FINISH $\sqrt{\quad}$		SHEET 1 OF 5	PART NUMBER MGS-UC3-X-X-X	REV
	THIS DRAWING IS THE PROPERTY OF MACRON DYNAMICS. ANY REPRODUCTIONS SHALL BE FOR QUOTATION, MANUFACTURING, OR PURCHASING PURPOSES ONLY. RELEASE OF DRAWINGS TO OTHER CONCERNS DOES NOT CONSTITUTE LICENSING IN ANY WAY. INFORMATION CONTAINED HEREIN IS PROPRIETARY AND CONFIDENTIAL.		BREAK ALL SHARP EDGES DIMENSIONAL LIMITS APPLY AFTER FINISHING THIRD ANGLE PROJECTION		

4 x M8x1.25 - 6H ∇ 19.1

GANTRY FOOTPRINT

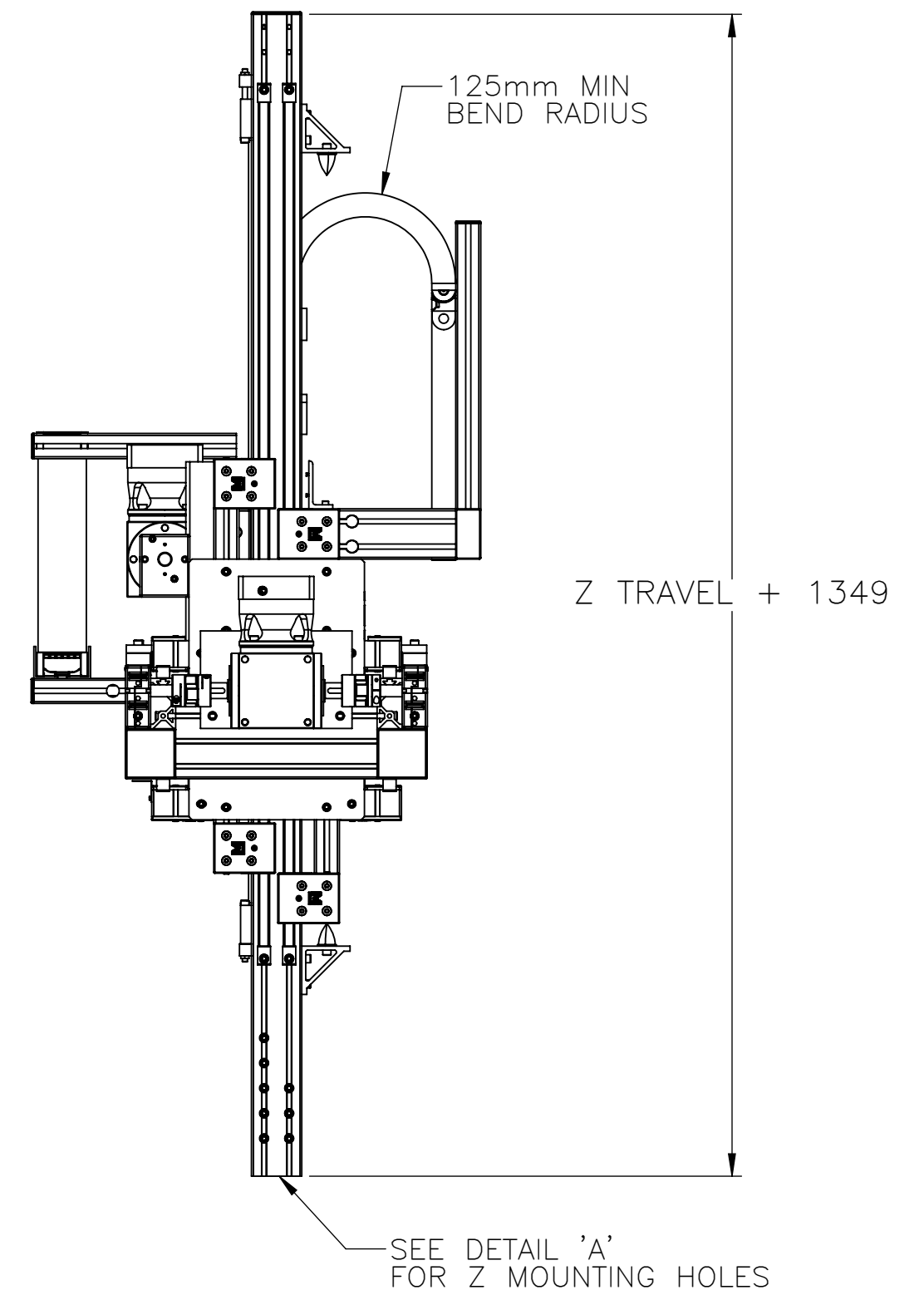
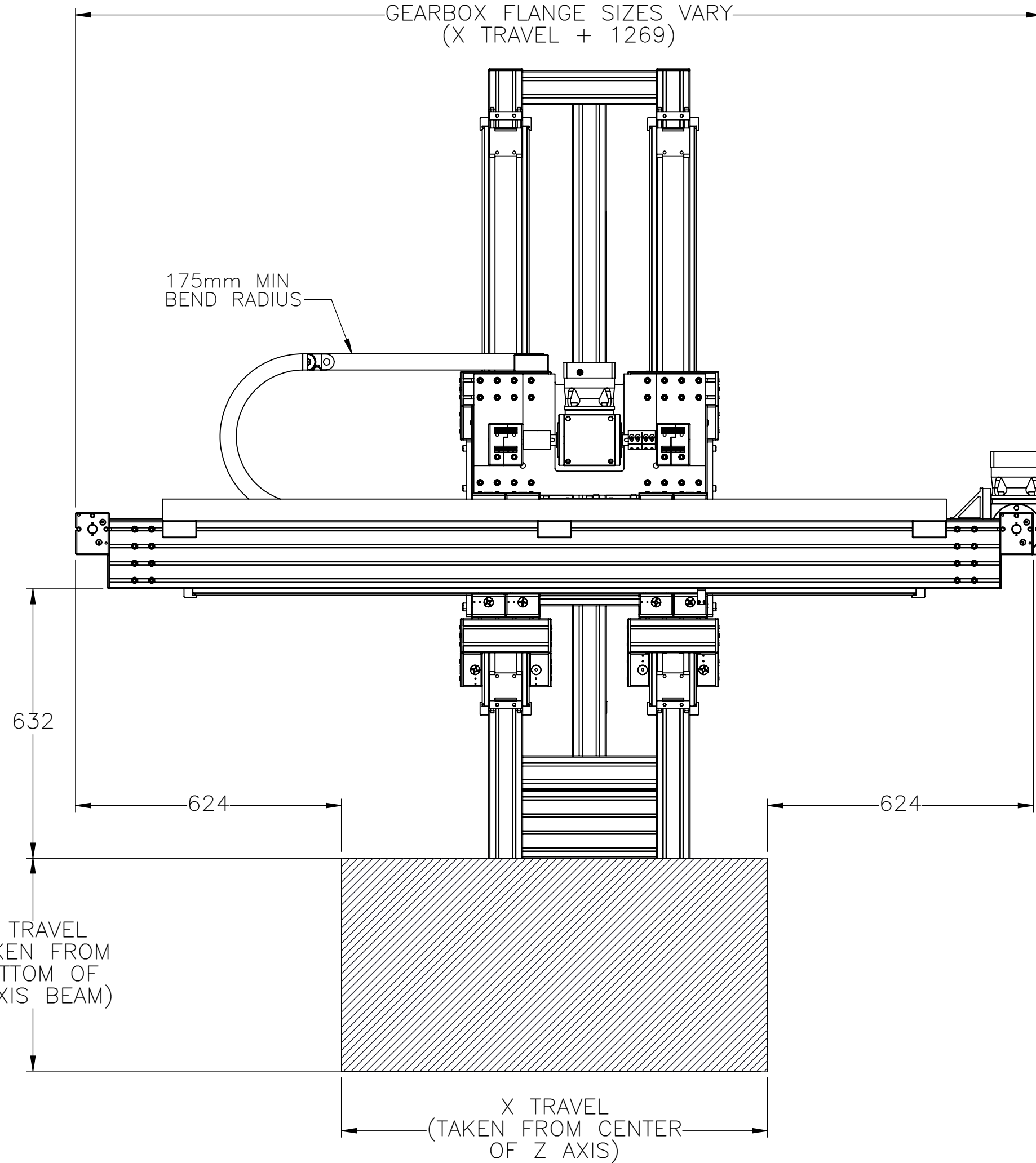


CABLE TRACK CROSS SECTION
(SAME FOR ALL AXES)



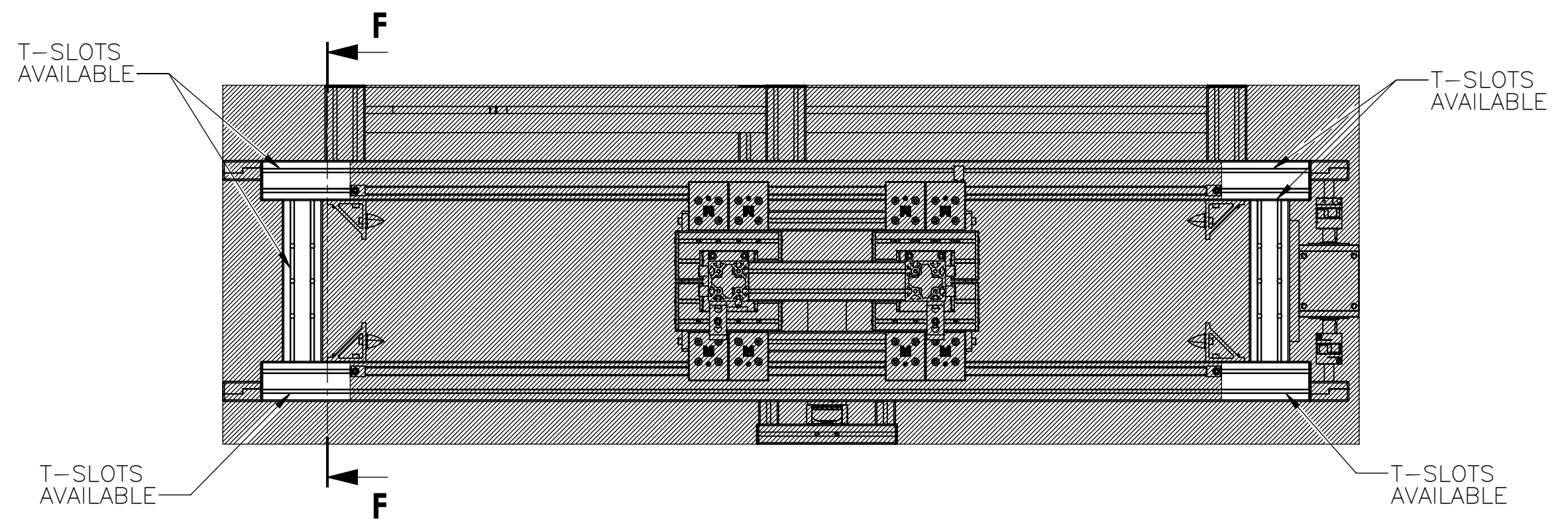
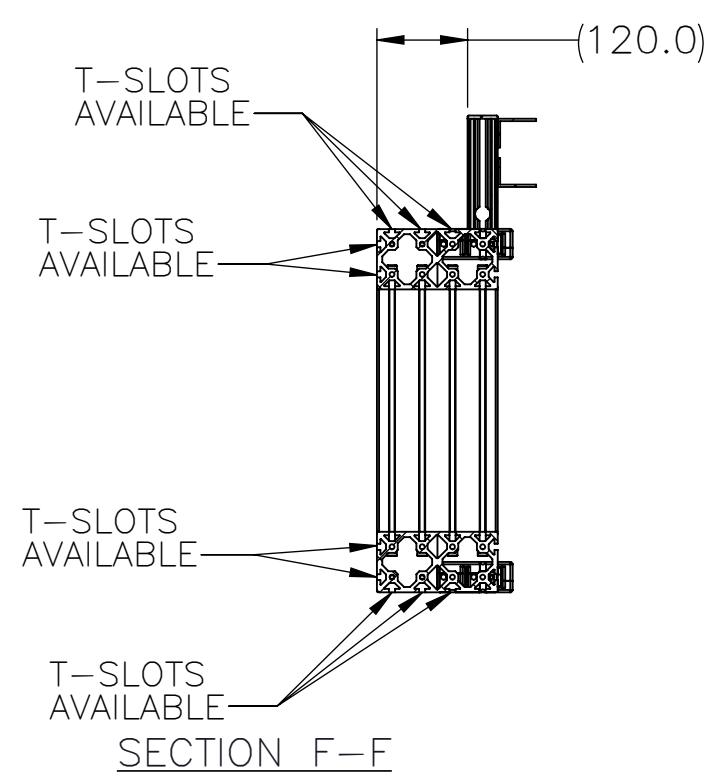
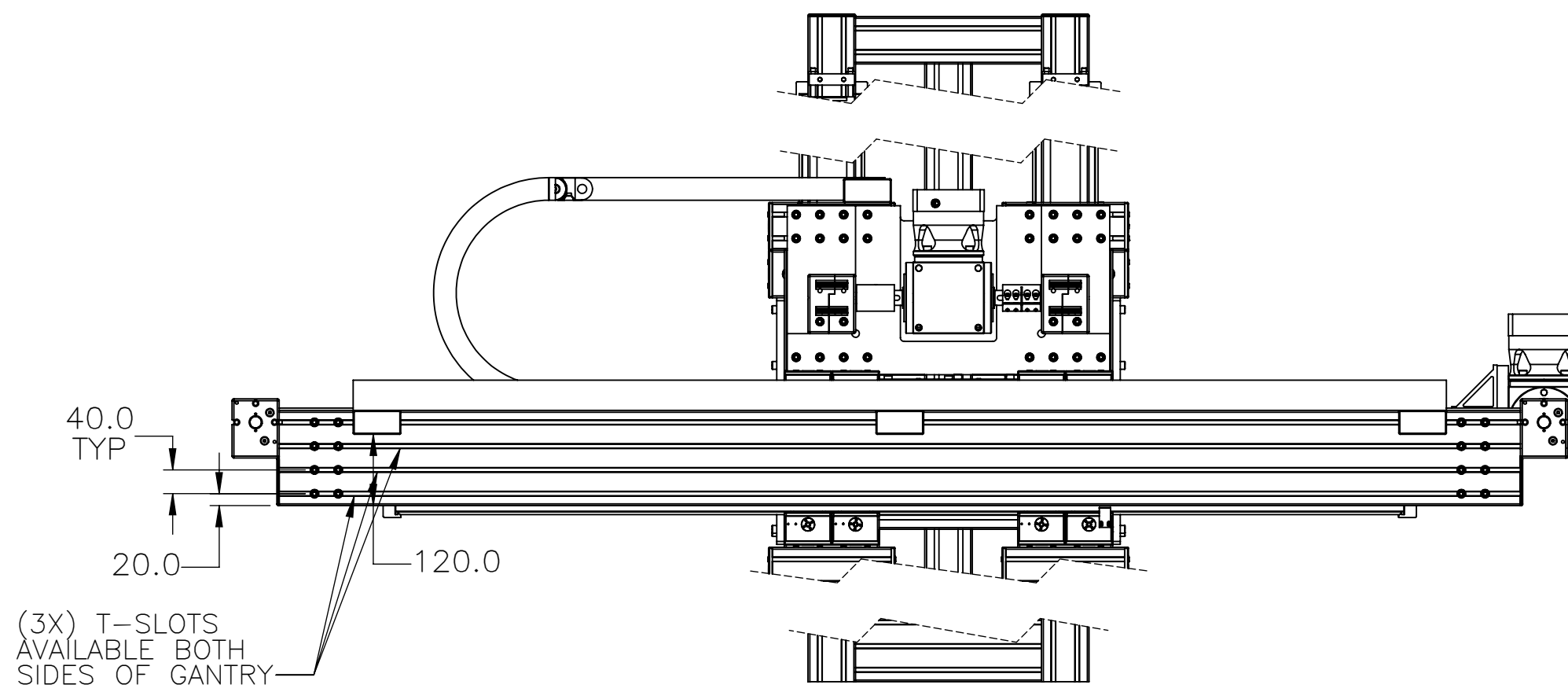
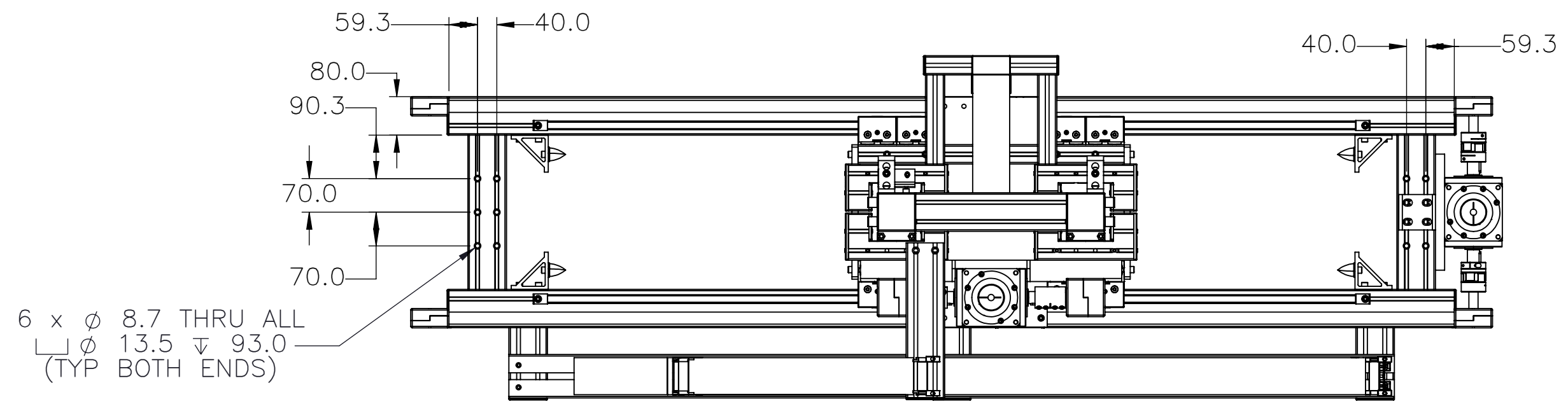
DETAIL A
SCALE 1 : 6

APPROXIMATE OAL
GEARBOX FLANGE SIZES VARY
(X TRAVEL + 1269)



<p>MACRON DYNAMICS INC</p> <p>THIS DRAWING IS THE PROPERTY OF MACRON DYNAMICS. ANY REPRODUCTIONS SHALL BE FOR QUOTATION, MANUFACTURING, OR PURCHASING PURPOSES ONLY. RELEASE OF DRAWINGS TO OTHER CONCERNS DOES NOT CONSTITUTE LICENSING IN ANY WAY. INFORMATION CONTAINED HEREIN IS PROPRIETARY AND CONFIDENTIAL.</p>	DRAWN BY: PHW CHECKED BY: -- LAST SAVED BY: Tim	DATE: 4/9/2013 DATE: DD/MM/YYYY DATE: 6/10/2022	MATERIAL: FINISH:	TITLE: MACRON UC3 GANTRY
	SURFACE FINISH 63		SCALE 1:1 SHEET SIZE C	
	BREAK ALL SHARP EDGES DIMENSIONAL LIMITS APPLY AFTER FINISHING THIRD ANGLE PROJECTION		SHEET 2 OF 5 PART NUMBER MGS-UC3-X-X-X	REV
	UNLESS OTHERWISE SPECIFIED, DIMENSIONS ARE IN INCHES. TOLERANCES UNLESS NOTED OTHERWISE:			

GANTRY MOUNTING FEATURES



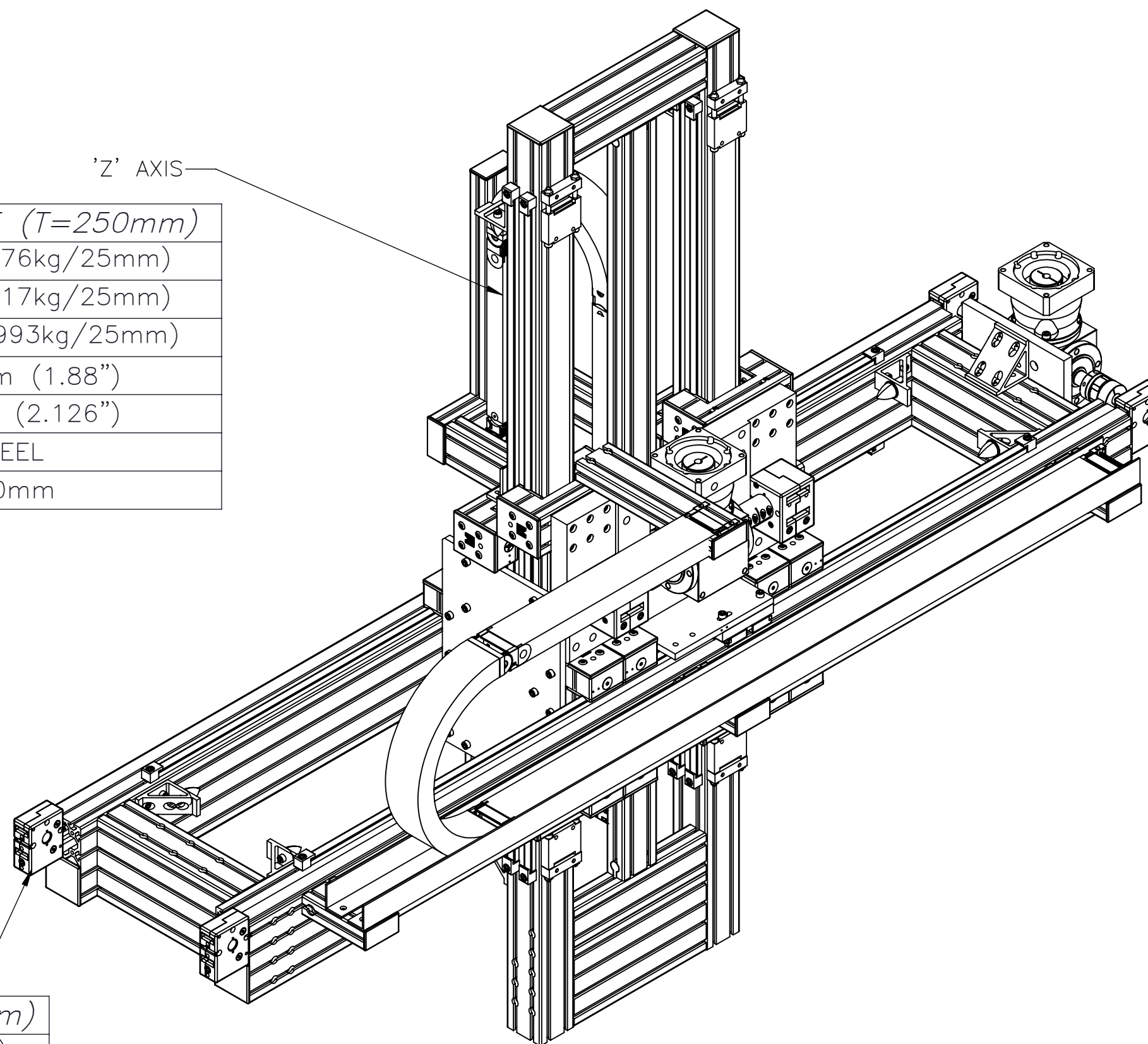
<p>MACRON DYNAMICS INC</p> <p>THIS DRAWING IS THE PROPERTY OF MACRON DYNAMICS. ANY REPRODUCTIONS SHALL BE FOR QUOTATION, MANUFACTURING, OR PURCHASING PURPOSES ONLY. RELEASE OF DRAWINGS TO OTHER CONCERNS DOES NOT CONSTITUTE LICENSING IN ANY WAY. INFORMATION CONTAINED HEREIN IS PROPRIETARY AND CONFIDENTIAL.</p>	DRAWN BY: PHW CHECKED BY: -- LAST SAVED BY: Tim	DATE: 4/9/2013 DATE: DD/MM/YYYY DATE: 6/10/2022	MATERIAL:	TITLE: MACRON UC3 GANTRY
	UNLESS OTHERWISE SPECIFIED, DIMENSIONS ARE IN INCHES. TOLERANCES UNLESS NOTED OTHERWISE:	FINISH:	SCALE: 1:1	SHEET SIZE: C
	SURFACE FINISH: 63	SHEET: 3 OF 5	PART NUMBER: MGS-UC3-X-X-X	REV:
	BREAK ALL SHARP EDGES DIMENSIONAL LIMITS APPLY AFTER FINISHING THIRD ANGLE PROJECTION			

MOTOR SIZING WORKSHEET

(INCREMENTAL ADDERS REFER TO MASS PER TRAVEL LENGTH)

BASE TRAVELS USED:
 X TRAVEL = 1000mm
 Z TRAVEL = 250mm

PROPERTY	BASE VALUE (T=250mm)
MOVING MASS	42.87kg(+.976kg/25mm)
BELT MASS	0.952kg(+.017kg/25mm)
*SYSTEM MASS	109.41kg(+.993kg/25mm)
PULLEY PITCH ϕ	47.75mm (1.88")
PULLEY WIDTH	54.0mm (2.126")
PULLEY MATERIAL	STEEL
TRAVEL PER REV	150mm



PROPERTY	BASE VALUE (T=1000mm)
*MOVING MASS	32.49kg(+0.035kg/25mm)
BELT MASS	1.074kg(+0.012kg/25mm)
PULLEY PITCH ϕ	47.75mm (1.88")
PULLEY WIDTH	28.9mm (1.14")
PULLEY MATERIAL	STEEL
TRAVEL PER REV	150mm

X-TRAVEL = _____ mm

Z-TRAVEL = _____ mm

NOTE: ALL SUPPLIED MASSES DO NOT INCLUDE CUSTOMER COMPONENTS (MOTORS, CABLES, ETC)

*SYSTEM MASS OF Z AXIS NEEDS TO BE ADDED TO THIS

TOTAL SYSTEM MASS	$(X \text{ TRAVEL} \times .0358) + (Z \text{ TRAVEL} \times .0408) + 189.87 = \text{kg}$
-------------------	--

<p>MACRON DYNAMICS INC</p>	DRAWN BY: PHW CHECKED BY: -- LAST SAVED BY: Tim	DATE: 4/9/2013 DATE: DD/MM/YYYY DATE: 6/10/2022	MATERIAL:	TITLE: MACRON UC3 GANTRY
	UNLESS OTHERWISE SPECIFIED, DIMENSIONS ARE IN INCHES. TOLERANCES UNLESS NOTED OTHERWISE:		FINISH:	SCALE: 1:1 SHEET SIZE: C
	SURFACE FINISH: 63		SHEET: 4 OF 5	PART NUMBER: MGS-UC3-X-X-X

THIS DRAWING IS THE PROPERTY OF MACRON DYNAMICS. ANY REPRODUCTIONS SHALL BE FOR QUOTATION, MANUFACTURING, OR PURCHASING PURPOSES ONLY. RELEASE OF DRAWINGS TO OTHER CONCERNS DOES NOT CONSTITUTE LICENSING IN ANY WAY. INFORMATION CONTAINED HEREIN IS PROPRIETARY AND CONFIDENTIAL.

BREAK ALL SHARP EDGES DIMENSIONAL LIMITS APPLY AFTER FINISHING THIRD ANGLE PROJECTION

SPECIFICATIONS

Sensor Type	Inductive
Sensor Size	Fits all 8mm wide T-Slots
Operating Voltage	10-30 VDC
Voltage Drop Across Conducting Sensor	≤1.8 V at 100 mA
Number of Conductors (AWG)	3x26 AWG
Temperature Range	-40°C to 105°C

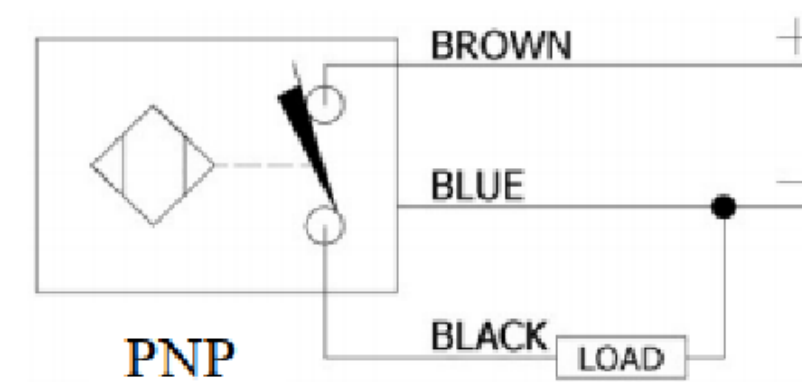
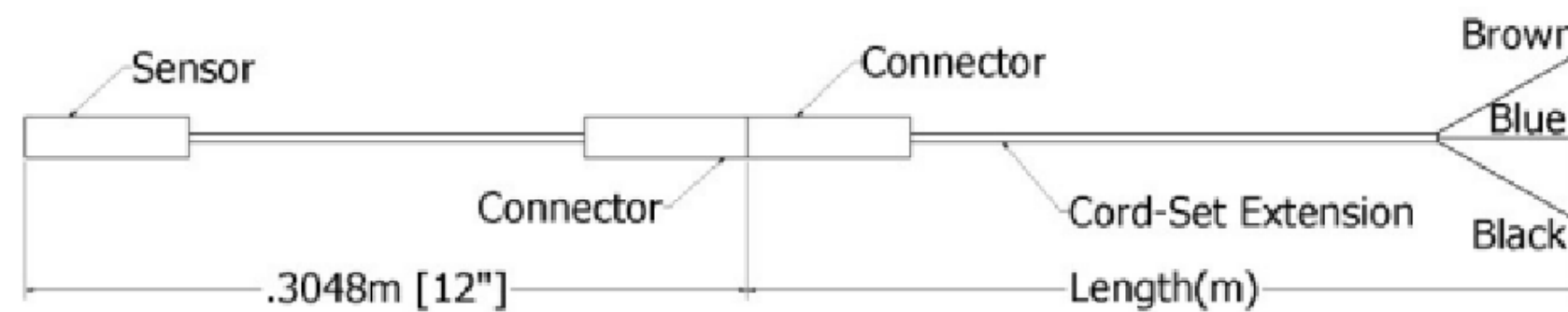
Part Number Configuration

244-_-_-_-_-_-

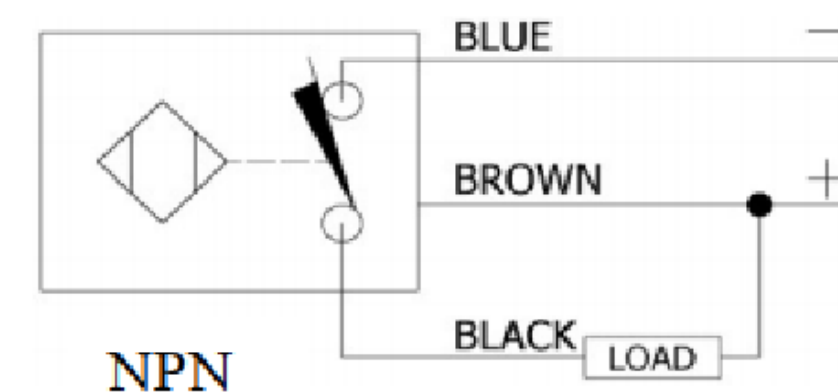
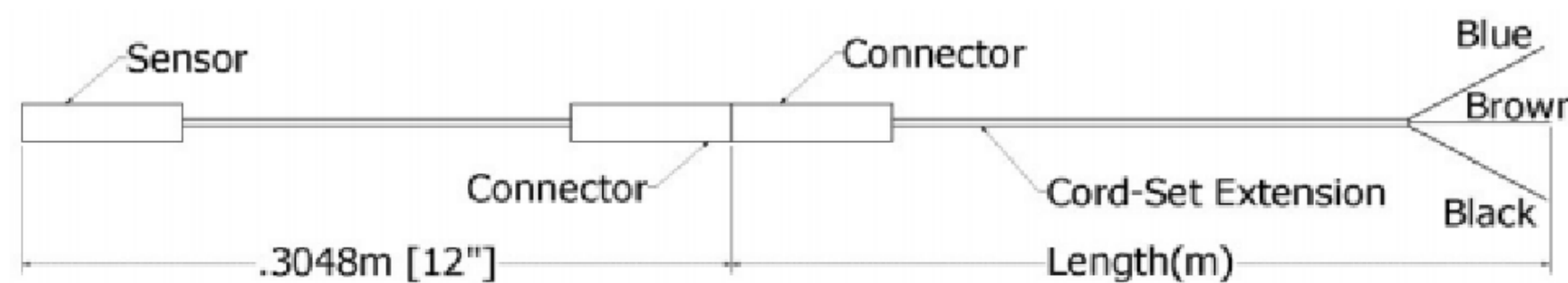
PNP or NPN	NC or NO	02	Meters
PNP or NPN	NC or NO	06	Meters
PNP or NPN	NC or NO	12	Meters

Example: PNP, normally closed, cord-set extension length 6 meters = 244-PNP-NC-06

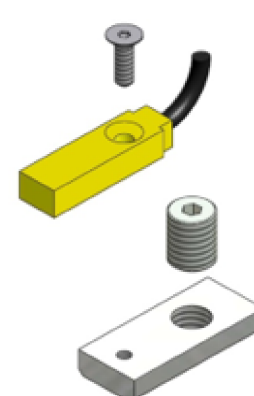
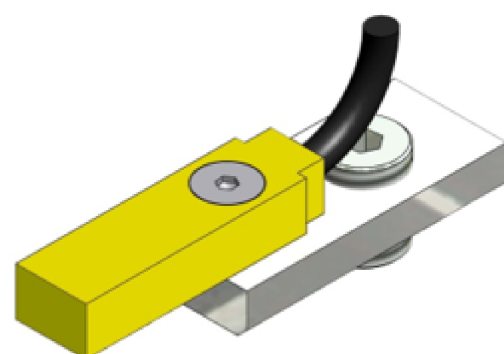
PNP Diagrams



NPN Diagrams



KIT INCLUDES – SENSOR, CORDSET EXTENSION, AND MOUNTING HARDWARE



	DRAWN BY: PHW CHECKED BY: -- LAST SAVED BY: Paul	DATE: 11/26/2017 DATE: DD/MM/YYYY DATE: 6/10/2022	MATERIAL: FINISH:	TITLE: T-SLOT SENSOR KIT
	UNLESS OTHERWISE SPECIFIED, DIMENSIONS ARE IN MILLIMETERS. TOLERANCES UNLESS NOTED OTHERWISE: .X ± .762 .XX ± .254 .XXX ± .127 ANG ± 0°30'	SURFACE FINISH: 63 ✓ BREAK ALL SHARP EDGES DIMENSIONAL LIMITS APPLY AFTER FINISHING THIRD ANGLE PROJECTION	SHEET: 5 OF 5 PART NUMBER:	SCALE: 1:1 SHEET SIZE: C REV: