

GEARBOX MODEL (X-AXIS):
 MPG-064 ___ MPG-084 ___
 MRG-064 ___ MRG-084 ___
 RATIO: _____

GEARBOX MODEL (Z-AXIS):
 MPG-064 ___ MPG-084 ___
 MRG-064 ___ MRG-084 ___
 RATIO: _____

FOR DIRECT DRIVE OPTION WITH MMK
 (NO GEARBOX) CHECK HERE: _____

MOTOR INFORMATION (X-AXIS):
 MANUFACTURER: _____
 MODEL: _____

MOTOR INFORMATION (Z-AXIS):
 MANUFACTURER: _____
 MODEL: _____

SENSOR INFORMATION (X-AXIS):
 HOME-QTY ___ 244-____-____-____
 EOT-QTY ___ 244-____-____-____
 SENSOR INFORMATION (Z-AXIS):
 HOME-QTY ___ 244-____-____-____
 EOT-QTY ___ 244-____-____-____

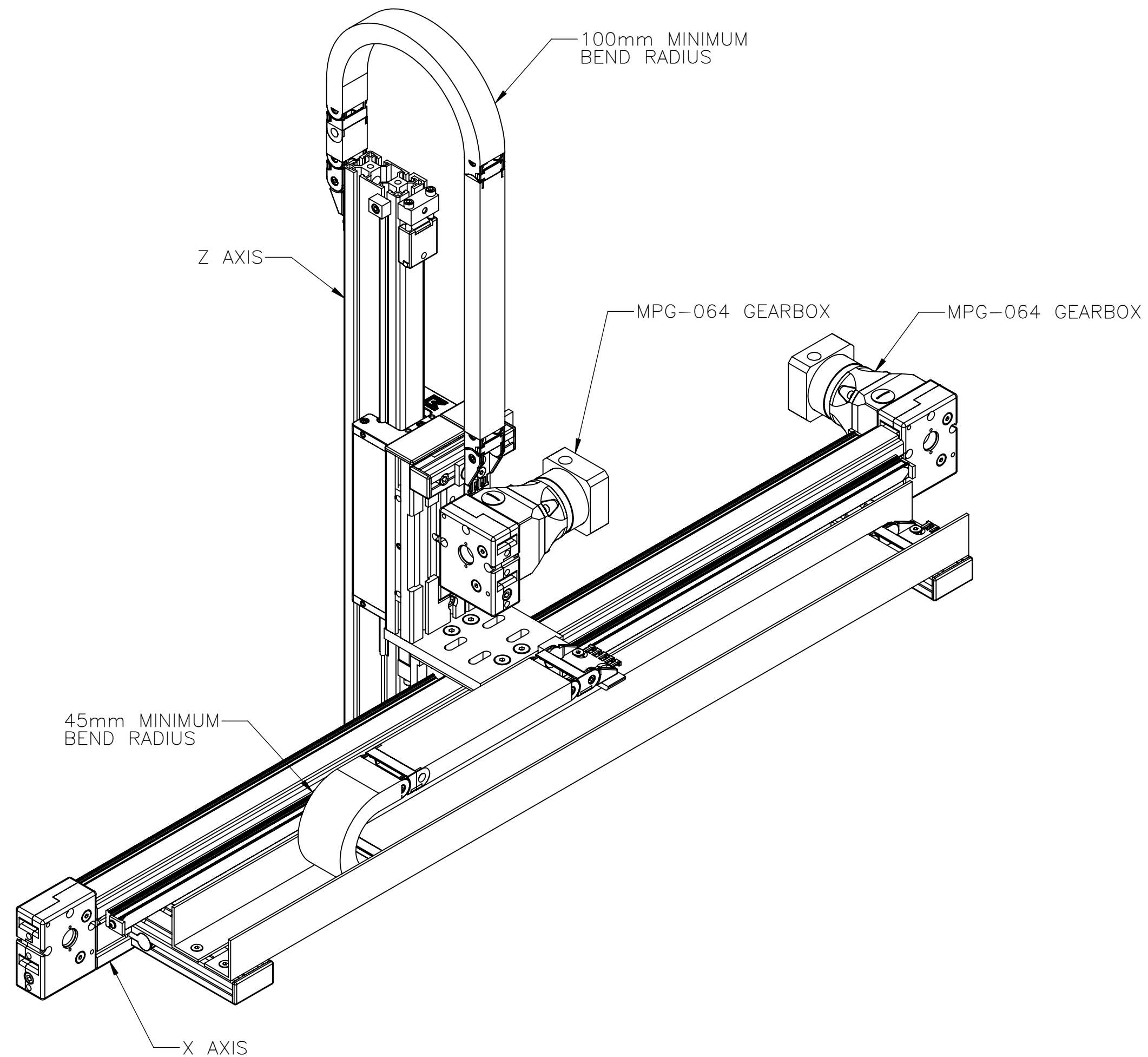
(SEE T-SLOT SENSOR KIT SHEET
 FOR PART NUMBER CONFIGURATION)

MGS-R6D- [] -X-B []

ENTER Z-AXIS TRAVEL
 TRAVEL IN INCREMENTS OF 25mm
 TRAVEL LIMITS: 150mm-500mm

ENTER X-AXIS TRAVEL
 TRAVEL IN INCREMENTS OF 25mm
 TRAVEL LIMITS: 150mm-5825mm


*IF TRAVEL IS
 OUTSIDE LIMITS
 LISTED, CONTACT
 MACRON*



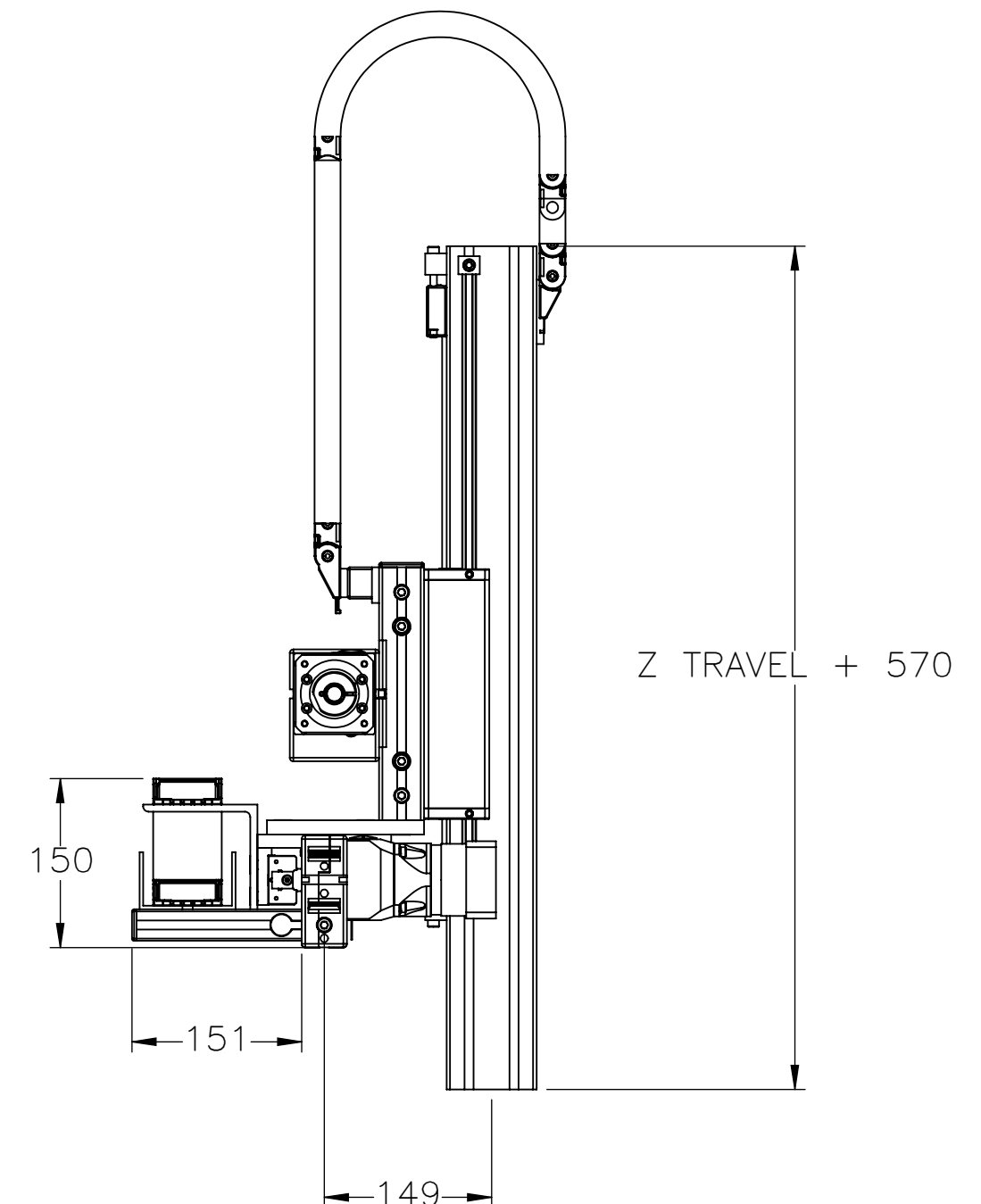
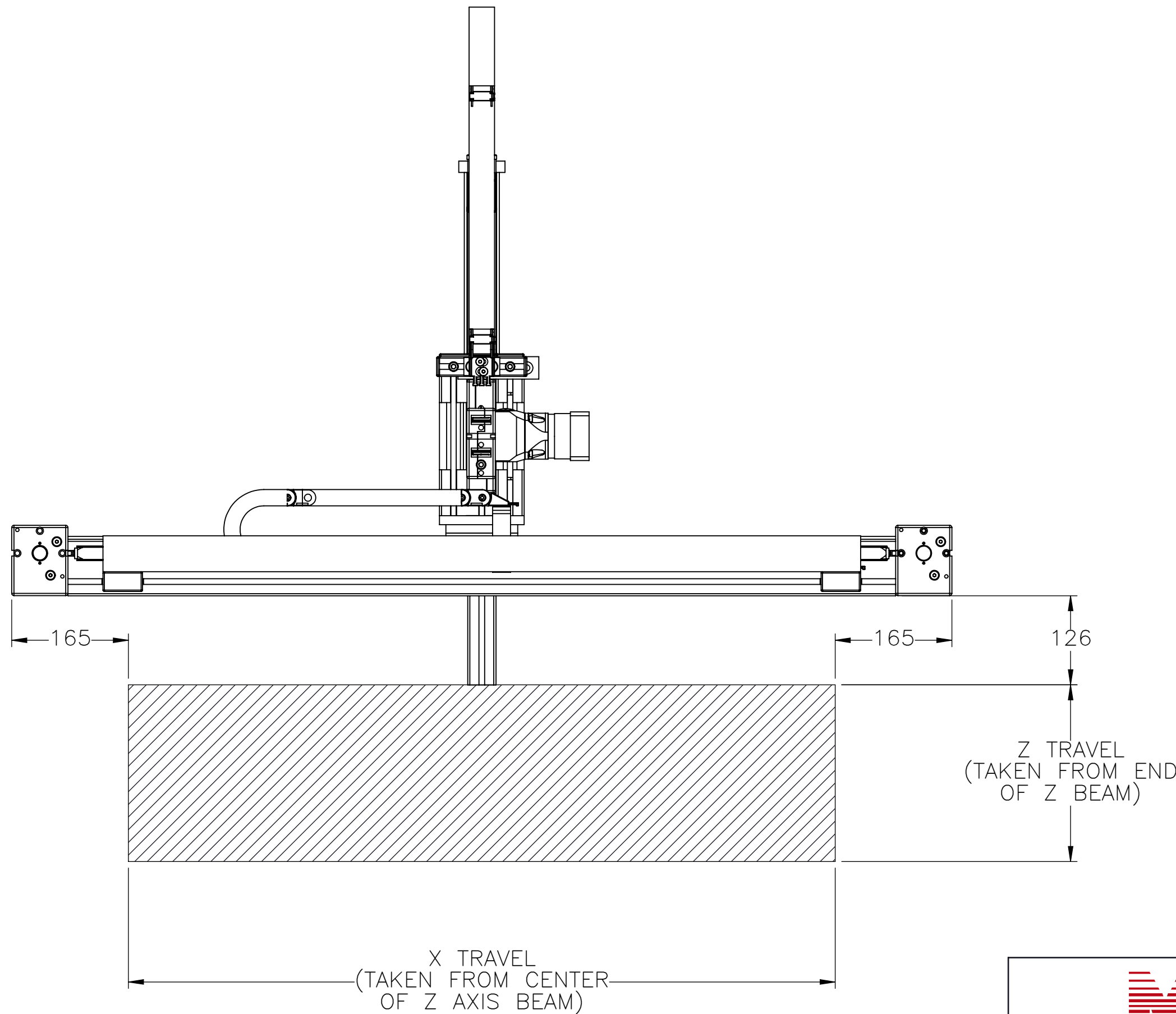
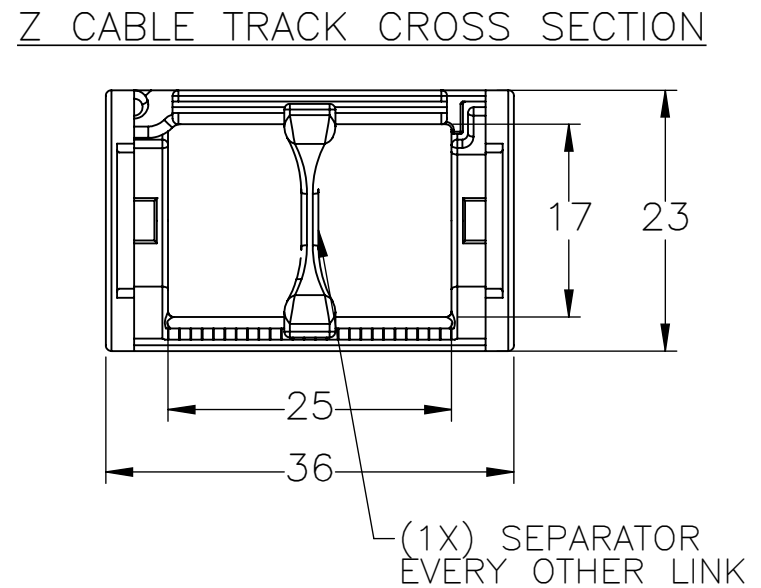
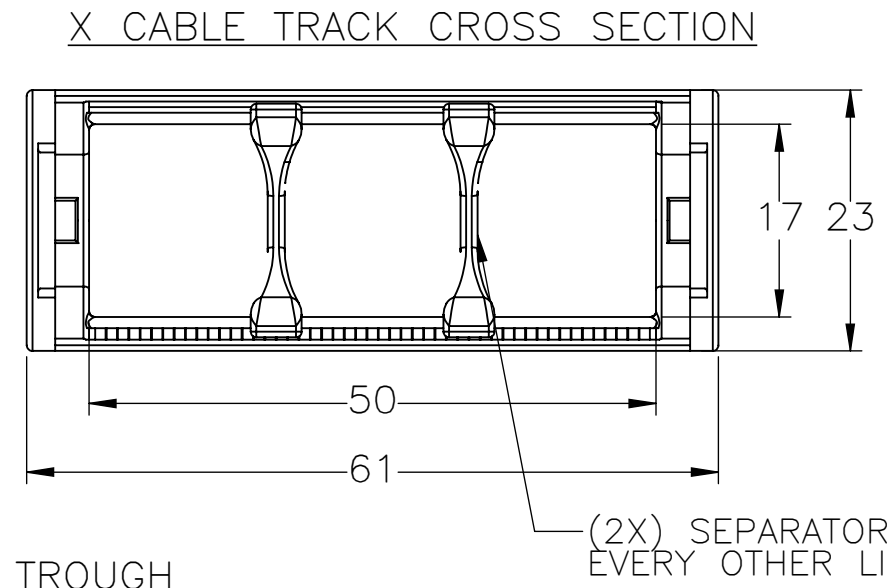
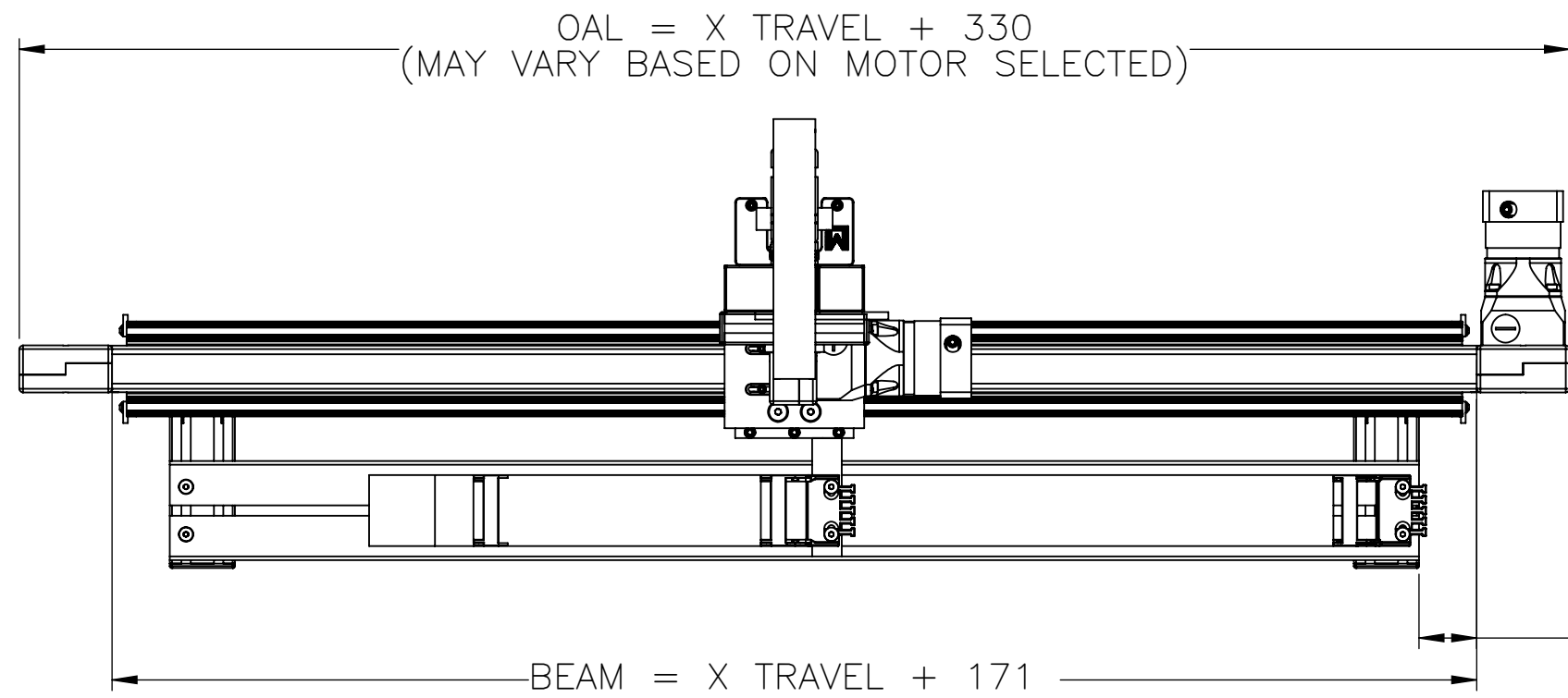
APPROVED: _____

DATE: _____

PO:REFERENCE#: _____

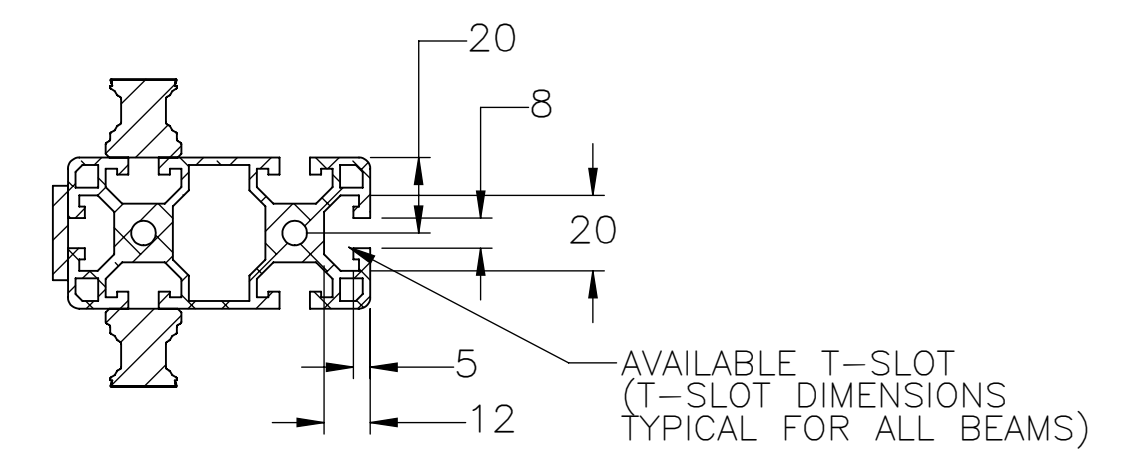
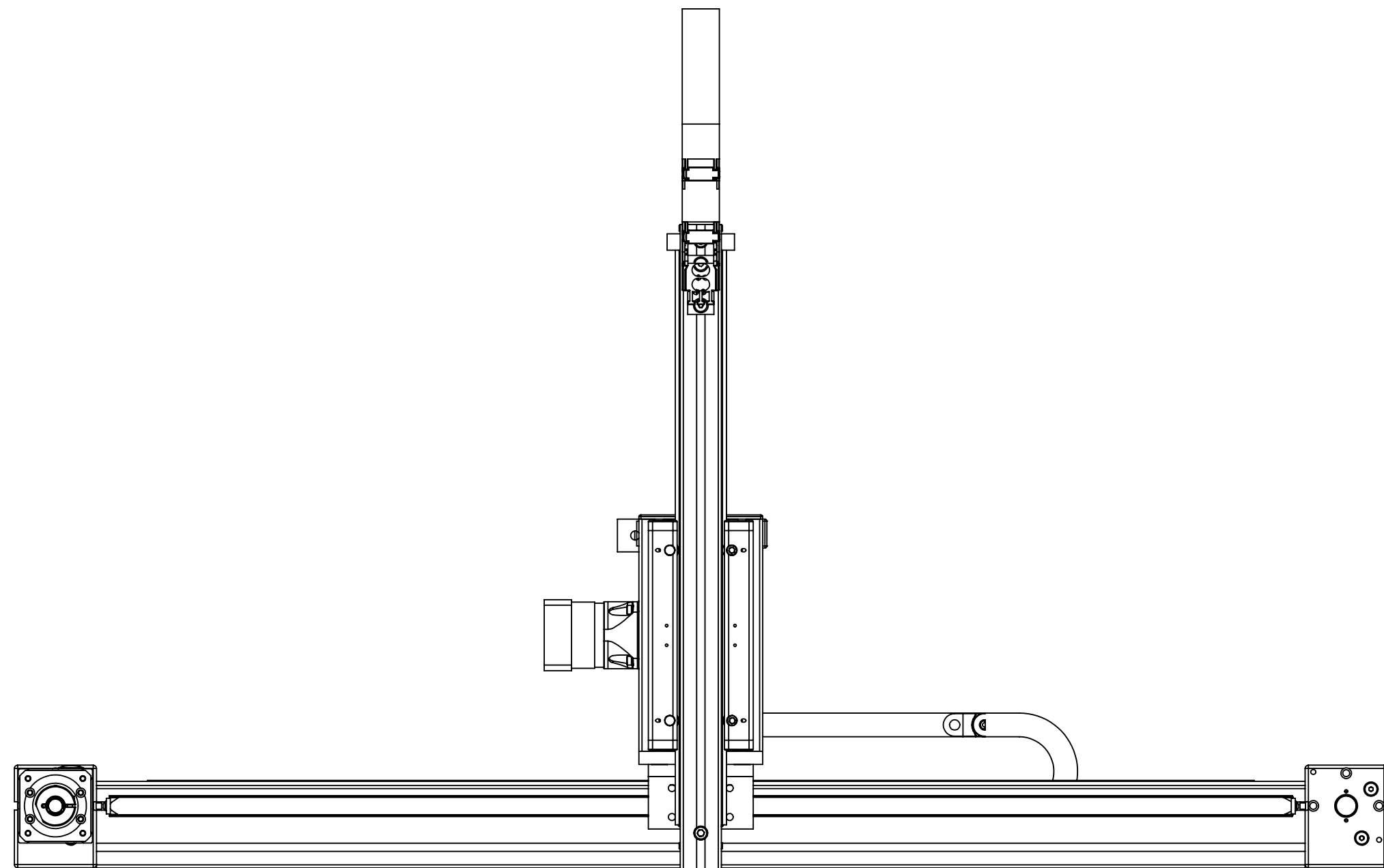
 MACRON DYNAMICS INC	DRAWN BY: PHW CHECKED BY: -- LAST SAVED BY: Tim	DATE: 7/14/2022 DATE: DD/MM/YYYY DATE: 10/21/2022	MATERIAL:	TITLE: MACRON R6D XZ GANTRY	
	UNLESS OTHERWISE SPECIFIED, DIMENSIONS ARE IN MILLIMETERS. TOLERANCES UNLESS NOTED OTHERWISE:		FINISH:	SCALE 1:1 SHEET SIZE C	
	SURFACE FINISH \checkmark		BREAK ALL SHARP EDGES DIMENSIONAL LIMITS APPLY AFTER FINISHING	SHEET 1 OF 5	PART NUMBER MGS-R6D-XXX-X-XXX
	THIS DRAWING IS THE PROPERTY OF MACRON DYNAMICS. ANY REPRODUCTIONS SHALL BE FOR QUOTATION, MANUFACTURING, OR PURCHASING PURPOSES ONLY. RELEASE OF DRAWINGS TO OTHER CONCERNS DOES NOT CONSTITUTE LICENSING IN ANY WAY. INFORMATION CONTAINED HEREIN IS PROPRIETARY AND CONFIDENTIAL		THIRD ANGLE PROJECTION	REV	

WORK ENVELOPE AND GANTRY FOOTPRINT

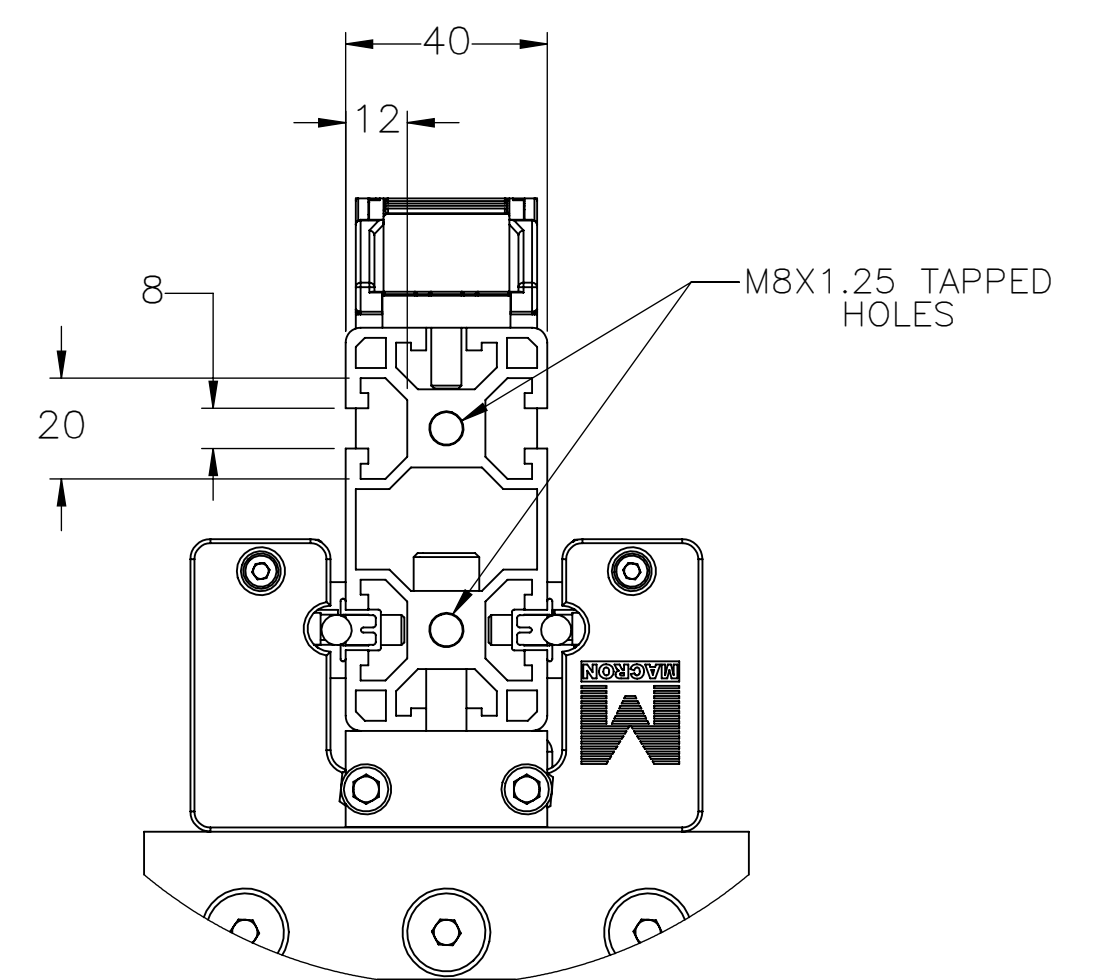
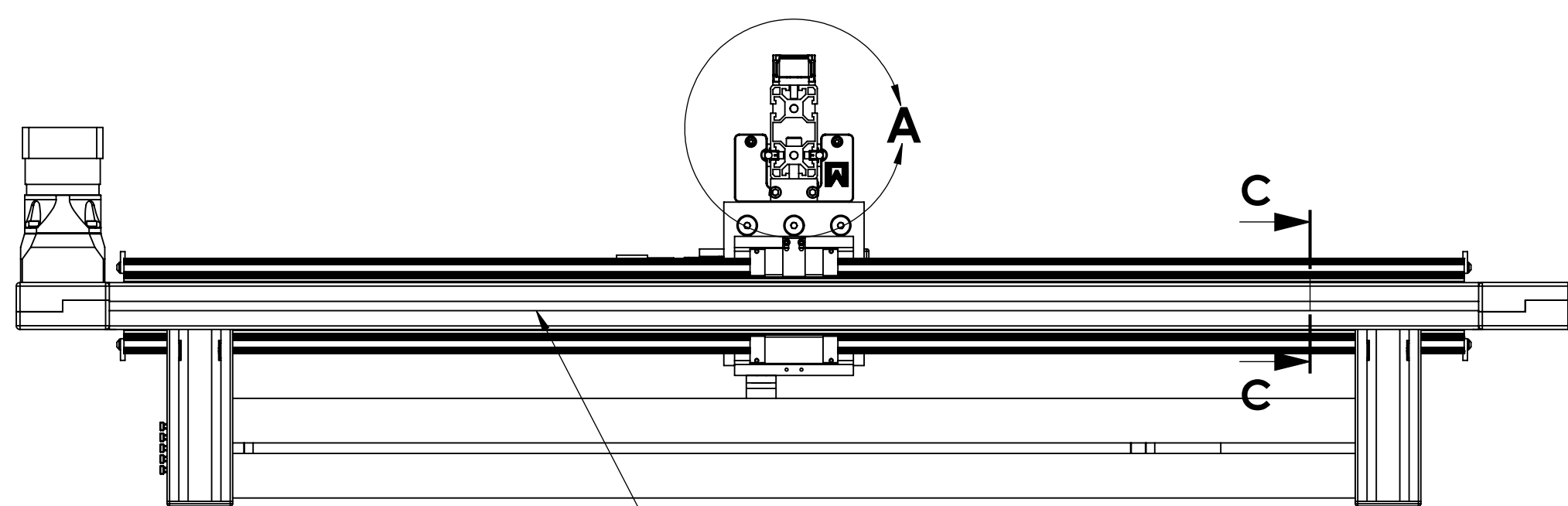


<p>MACRON DYNAMICS INC</p> <p>THIS DRAWING IS THE PROPERTY OF MACRON DYNAMICS. ANY REPRODUCTIONS SHALL BE FOR QUOTATION, MANUFACTURING, OR PURCHASING PURPOSES ONLY. RELEASE OF DRAWINGS TO OTHER CONCERNS DOES NOT CONSTITUTE LICENSING IN ANY WAY. INFORMATION CONTAINED HEREIN IS PROPRIETARY AND CONFIDENTIAL.</p>	DRAWN BY: PHW CHECKED BY: -- LAST SAVED BY: Tim	DATE: 7/14/2022 DATE: DD/MM/YYYY DATE: 10/21/2022	MATERIAL:	TITLE: MACRON R6D XZ GANTRY								
	UNLESS OTHERWISE SPECIFIED, DIMENSIONS ARE IN MILLIMETERS. TOLERANCES UNLESS NOTED OTHERWISE: <table border="0"> <tr><td>.X ±</td><td>.762</td></tr> <tr><td>.XX ±</td><td>.254</td></tr> <tr><td>.XXX ±</td><td>.127</td></tr> <tr><td>ANG ±</td><td>0°30'</td></tr> </table>		.X ±	.762	.XX ±	.254	.XXX ±	.127	ANG ±	0°30'	FINISH:	SCALE 1:1 SHEET SIZE C
	.X ±	.762										
	.XX ±	.254										
.XXX ±	.127											
ANG ±	0°30'											
SURFACE FINISH \checkmark		BREAK ALL SHARP EDGES DIMENSIONAL LIMITS APPLY AFTER FINISHING THIRD ANGLE PROJECTION	SHEET 2 OF 5	PART NUMBER MGS-R6D-XXX-X-XXX								
REV												


GANTRY MOUNTING FOOTPRINT



SECTION C-C

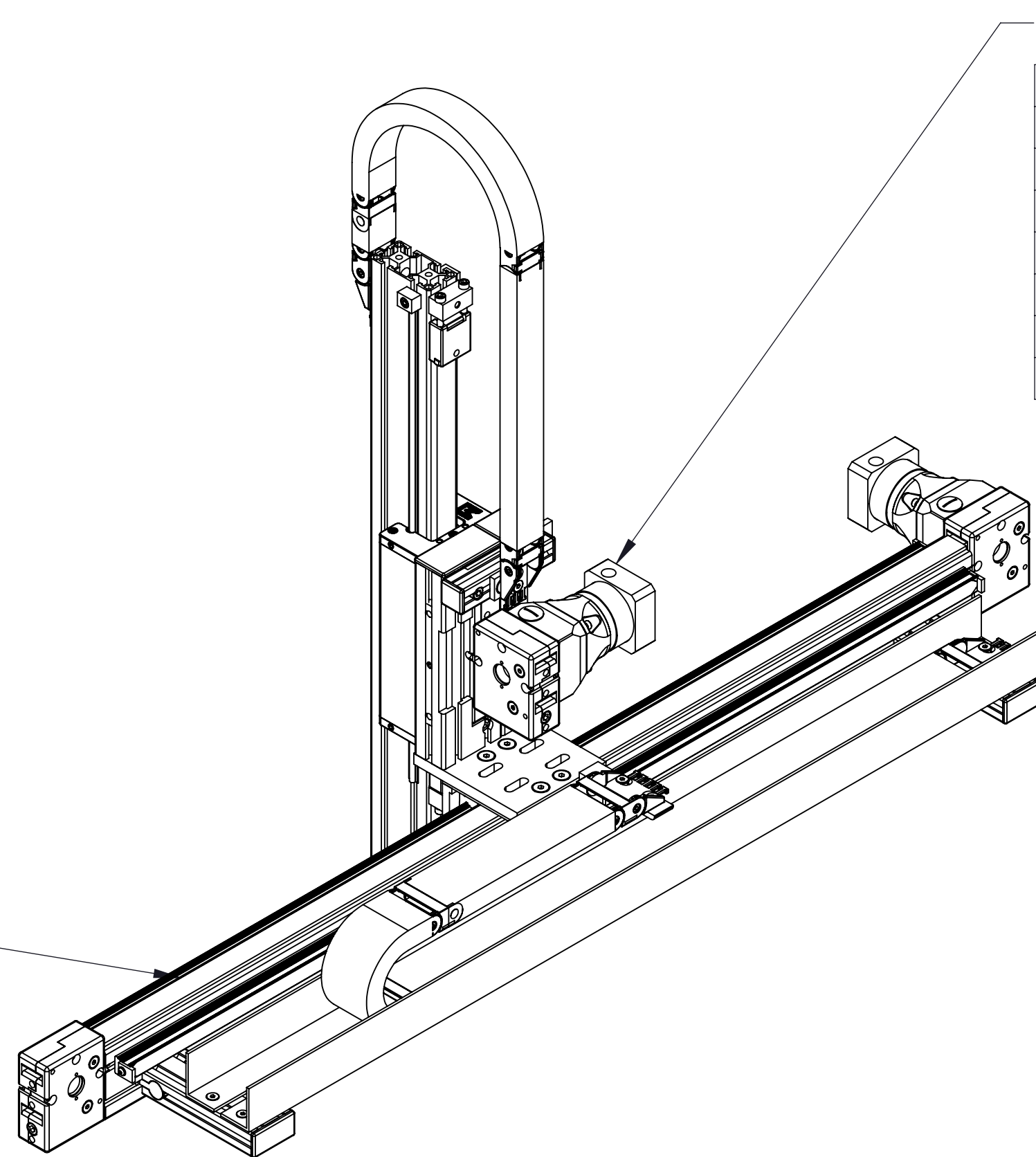


DETAIL A
SCALE 1 : 1.5

 MACRON DYNAMICS INC	DRAWN BY: JA DATE: 3/9/2020	MATERIAL:	TITLE: MACRON R6D XZ GANTRY
	CHECKED BY: -- DATE: DD/MM/YYYY	FINISH:	
	LAST SAVED BY: Tim DATE: 10/21/2022	UNLESS OTHERWISE SPECIFIED, DIMENSIONS ARE IN INCHES: .X ± .03 .XX ± .010 .XXX ± .005 OTHERWISE: ANG ± 0°30'	
THIS DRAWING IS THE PROPERTY OF MACRON DYNAMICS. ANY REPRODUCTIONS SHALL BE FOR QUOTATION, MANUFACTURING, OR PURCHASING PURPOSES ONLY. RELEASE OF DRAWINGS TO OTHER CONCERNS DOES NOT CONSTITUTE LICENSING IN ANY WAY. INFORMATION CONTAINED HEREIN IS PROPRIETARY AND CONFIDENTIAL.	SURFACE FINISH 63	SCALE 1:1 SHEET SIZE C	
	BREAK ALL SHARP EDGES DIMENSIONAL LIMITS APPLY AFTER FINISHING	SHEET PART NUMBER	REV
	THIRD ANGLE PROJECTION	3 OF 5	MGS-R6D-XXX-X-XXX

MOTOR SIZING INFORMATION

(INCREMENTAL ADDERS REFER TO MASS PER TRAVEL LENGTH)



Z-AXIS

PROPERTY	BASE VALUE (T=150mm)
MOVING MASS	2.925kg(+0.090kg/25mm)
BELT MASS	0.086kg(+0.003kg/25mm)
SYSTEM MASS	7.788kg(+0.090kg/25mm)
PULLEY PITCH ϕ	47.75mm (1.88")
PULLEY WIDTH	28.9mm (1.14")
PULLEY MATERIAL	STEEL
TRAVEL PER REV	150mm

X-AXIS

PROPERTY	BASE VALUE (T=150mm)
**MOVING MASS	2.215kg(+0.022kg/25mm)
BELT MASS	0.109kg(+0.006kg/25mm)
PULLEY PITCH ϕ	47.75mm (1.88")
PULLEY WIDTH	28.9mm (1.14")
PULLEY MATERIAL	STEEL
TRAVEL PER REV	150mm

**SYSTEM MASS OF Z-AXIS NEEDS TO BE ADDED TO THIS


X-TRAVEL = _____ mm

Z-TRAVEL = _____ mm

NOTE: ALL SUPPLIED MASSES DO NOT INCLUDE CUSTOMER COMPONENTS (MOTORS, CABLES, ETC)

GEARBOX MASS (ADD TO SYSTEM MASSES)	MPG-064	1.0kg
	MPG-084	2.3kg
	MPG-114	5.8kg
	MRG-064	3.0kg
	MRG-084	5.6kg
	MRG-114	15.0kg

TOTAL SYSTEM MASS (X TRAVEL x .0054) + (Z TRAVEL x .0034) + 12.52 = kg

 MACRON DYNAMICS INC	DRAWN BY: PHW CHECKED BY: -- LAST SAVED BY: Tim	DATE: 11/26/2017 DATE: DD/MM/YYYY DATE: 10/21/2022	MATERIAL:	TITLE:
	UNLESS OTHERWISE SPECIFIED, DIMENSIONS ARE IN INCHES. TOLERANCES UNLESS NOTED OTHERWISE:		FINISH:	
	SURFACE FINISH 63		SCALE 1:1	SHEET SIZE C
	THIS DRAWING IS THE PROPERTY OF MACRON DYNAMICS. ANY REPRODUCTIONS SHALL BE FOR QUOTATION, MANUFACTURING, OR PURCHASING PURPOSES ONLY. RELEASE OF DRAWINGS TO OTHER CONCERNS DOES NOT CONSTITUTE LICENSING IN ANY WAY. INFORMATION CONTAINED HEREIN IS PROPRIETARY AND CONFIDENTIAL.		BREAK ALL SHARP EDGES DIMENSIONAL LIMITS APPLY AFTER FINISHING	SHEET 4 OF 5

THIRD ANGLE PROJECTION

SPECIFICATIONS

Sensor Type	Inductive
Sensor Size	Fits all 8mm wide T-Slots
Operating Voltage	10–30 VDC
Voltage Drop Across Conducting Sensor	≤1.8 V at 100 mA
Number of Conductors (AWG)	3x26 AWG
Temperature Range	-40°C to 105°C

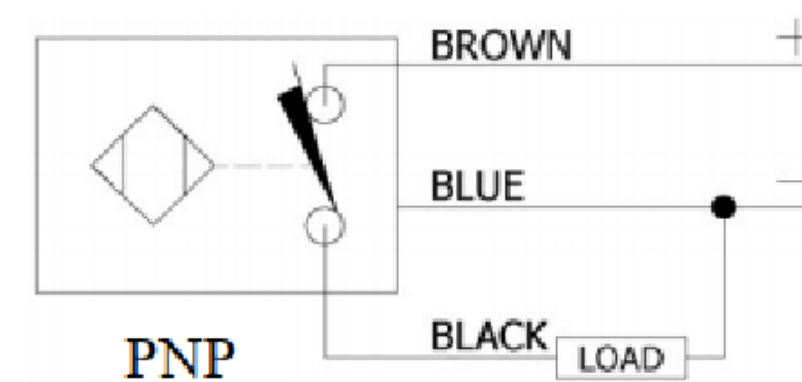
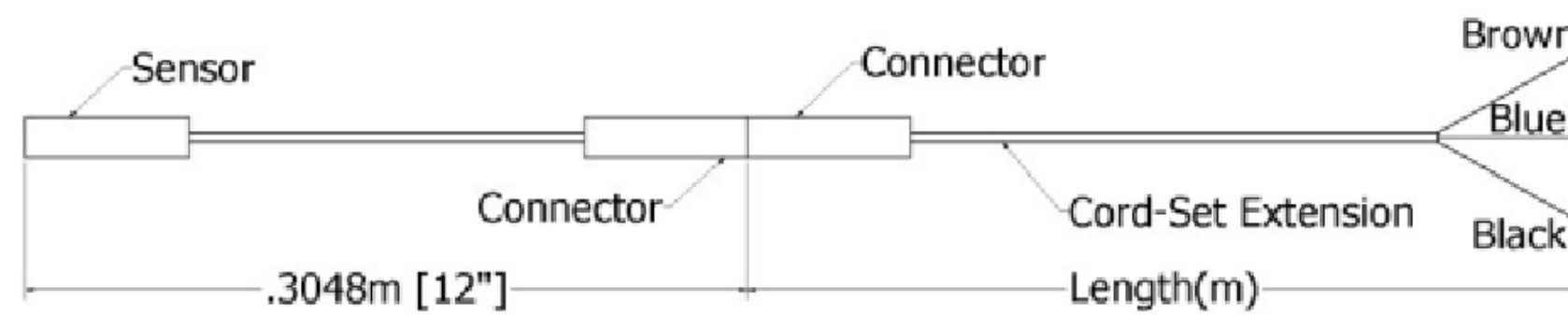
Part Number Configuration

244-_-_-_-_-_-

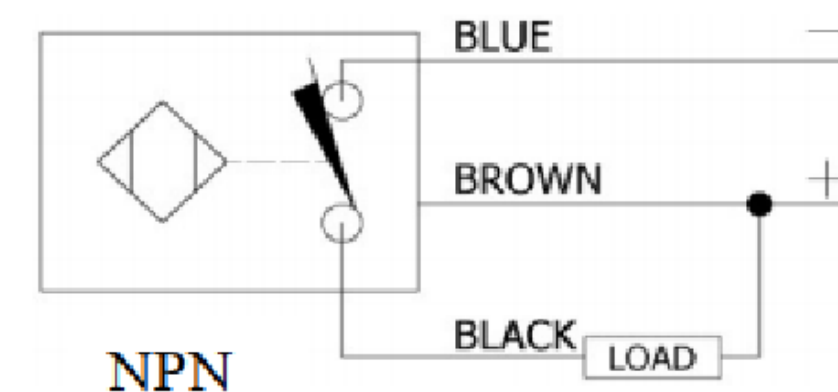
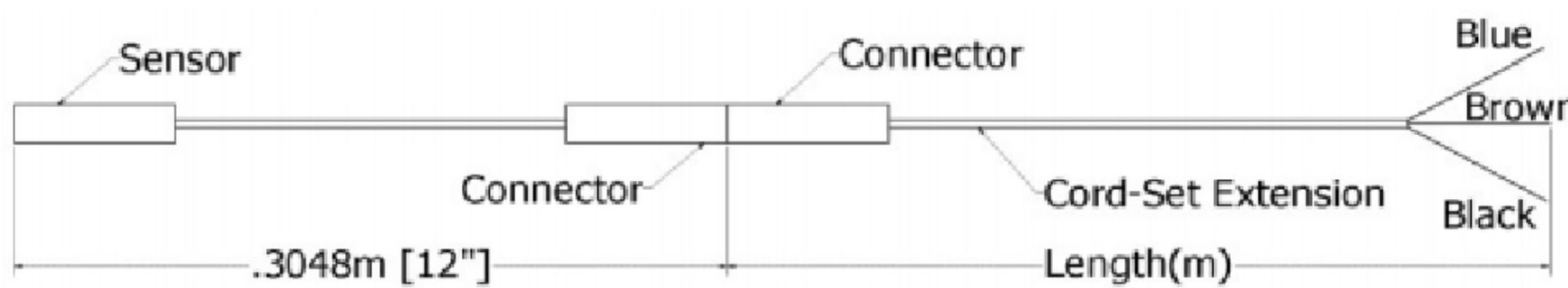
PNP or NPN	NC or NO	02	Meters
PNP or NPN	NC or NO	06	Meters
PNP or NPN	NC or NO	12	Meters

Example: PNP, normally closed, cord-set extension length 6 meters = 244-PNP-NC-06

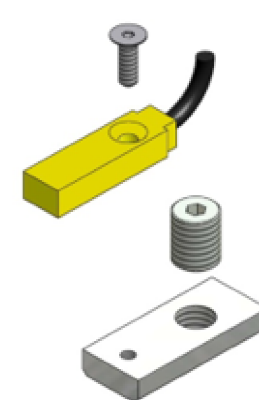
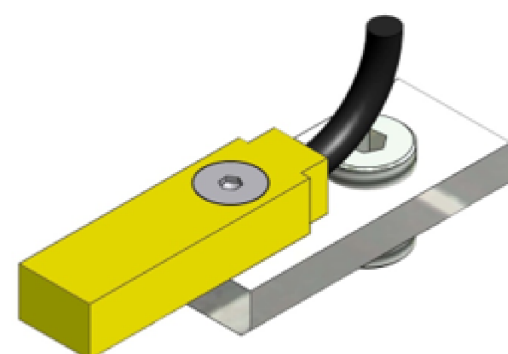
PNP Diagrams



NPN Diagrams



KIT INCLUDES – SENSOR, CORDSET EXTENSION, AND MOUNTING HARDWARE



	DRAWN BY: PHW CHECKED BY: -- LAST SAVED BY: Paul	DATE: 11/26/2017 DATE: DD/MM/YYYY DATE: 10/21/2022	MATERIAL:	TITLE: T-SLOT SENSOR KIT	
	UNLESS OTHERWISE SPECIFIED, DIMENSIONS ARE IN MILLIMETERS. TOLERANCES UNLESS NOTED OTHERWISE:		FINISH:	SCALE 1:1 SHEET SIZE C	
	SURFACE FINISH \checkmark		SHEET 5 OF 5	PART NUMBER MGS-M6S-XY	REV
	THIS DRAWING IS THE PROPERTY OF MACRON DYNAMICS. ANY REPRODUCTIONS SHALL BE FOR QUOTATION, MANUFACTURING, OR PURCHASING PURPOSES ONLY. RELEASE OF DRAWINGS TO OTHER CONCERNS DOES NOT CONSTITUTE LICENSING IN ANY WAY. INFORMATION CONTAINED HEREIN IS PROPRIETARY AND CONFIDENTIAL.		BREAK ALL SHARP EDGES DIMENSIONAL LIMITS APPLY AFTER FINISHING THIRD ANGLE PROJECTION		