

GEARBOX MODEL (X-AXIS)

MPG-014 _____

MRG-014 _____

RATIO: _____

MGS-PSC- [] -X- []

ENTER Z-AXIS TRAVEL
TRAVEL IN INCREMENTS OF 25mm
TRAVEL LIMITS: 150mm-500mm

GEARBOX MODEL (Z-AXIS)

MPG-062 _____

MRG-062 _____

RATIO: _____

ENTER X-AXIS TRAVEL
TRAVEL IN INCREMENTS OF 25mm
TRAVEL LIMITS: 150mm-5575mm

FOR DIRECT-DRIVE OPTION WITH MMKs
(NO GEARBOXES) CHECK HERE: _____

*IF TRAVEL IS OUTSIDE
LIMITS LISTED, CONTACT
MACRON*

MOTOR INFORMATION (X-AXIS)

MANUFACTURER: _____

MODEL: _____

MOTOR INFORMATION (Z-AXIS)

MANUFACTURER: _____

MODEL: _____

SENSOR INFORMATION X-AXIS:

HOME-QTY ___ 244- _____

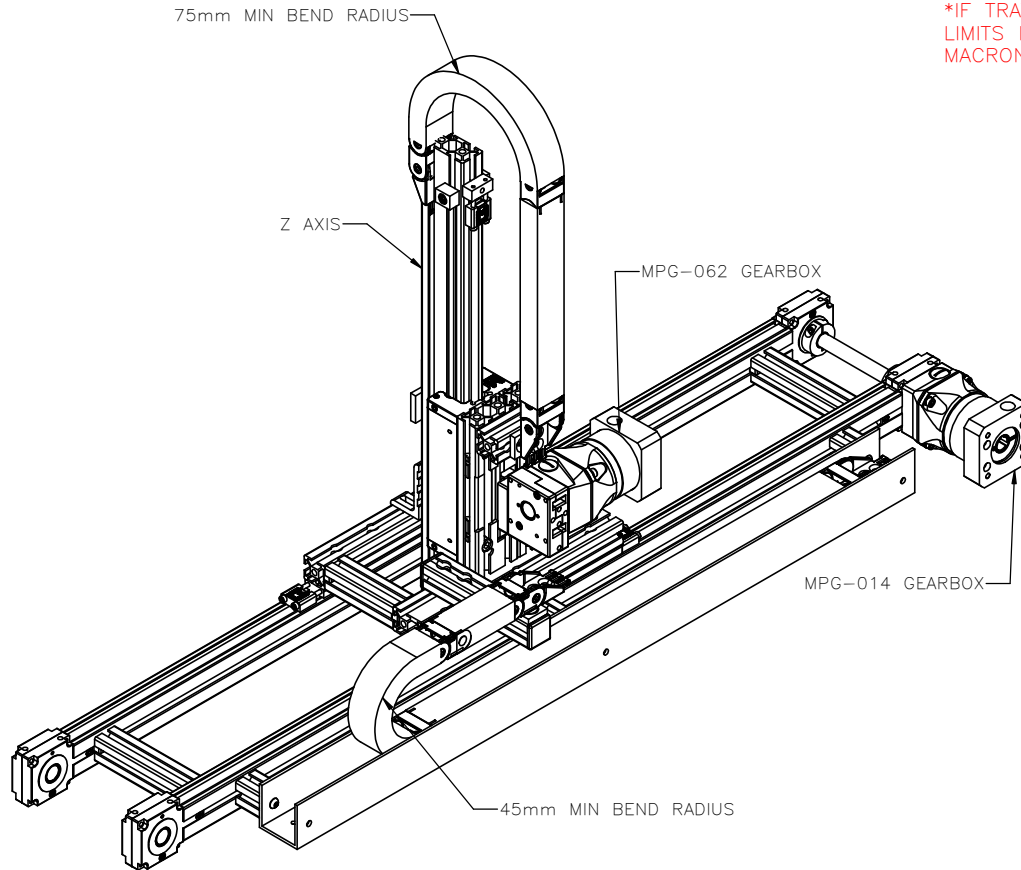
EOT-QTY ___ 244- _____

SENSOR INFORMATION Z-AXIS:

HOME-QTY ___ 244- _____

EOT-QTY ___ 244- _____

(SEE T-SLOT SENSOR KIT SHEET FOR
PART NUMBER CONFIGURATION)



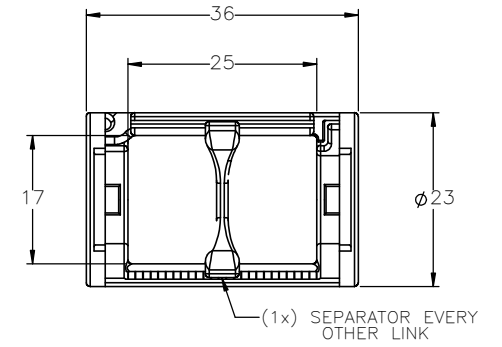
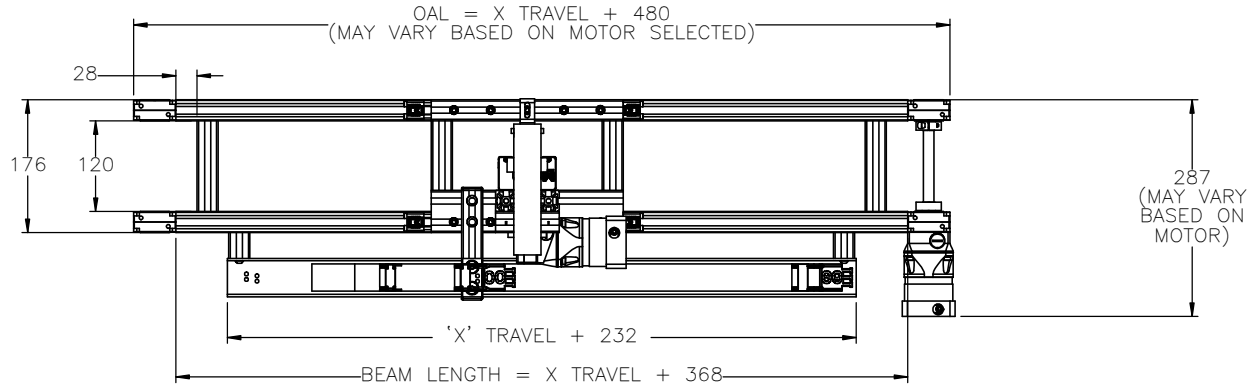
APPROVED: _____

DATE: _____

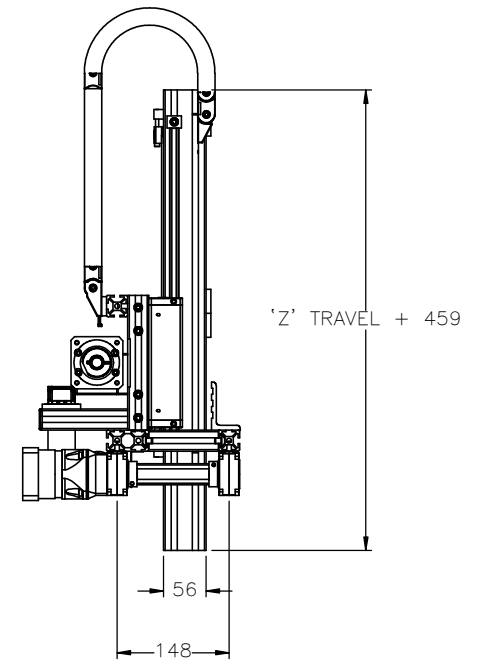
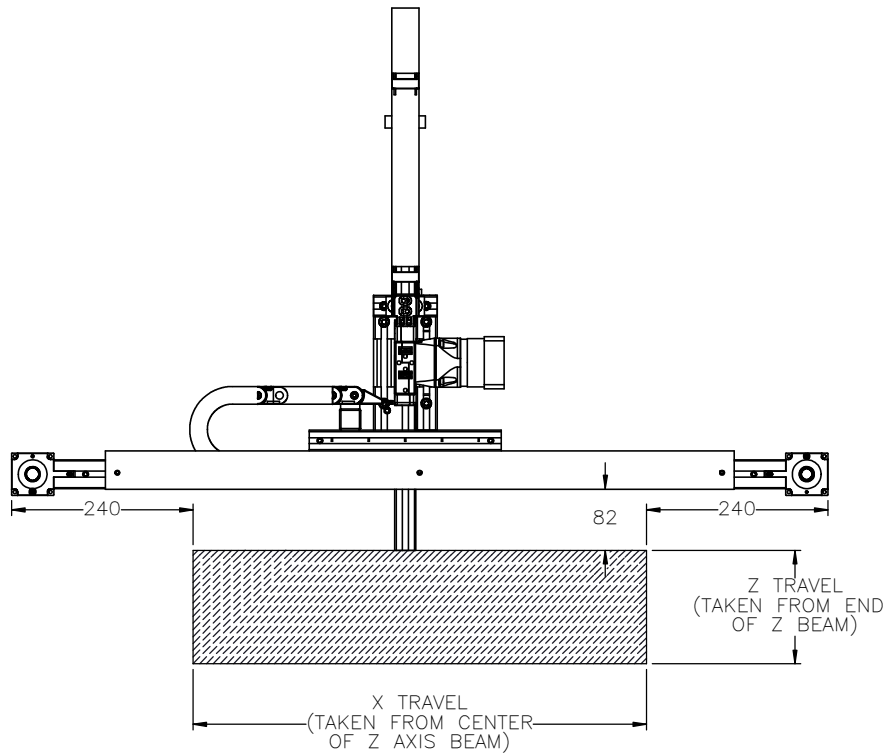
PO:REFERENCE#: _____


	DRAWN BY: PHW DATE: 11/26/2017 CHECKED BY: _____ DATE: DD/MM/YYYY LAST SAVED BY: Paul DATE: 9/8/2023	MATERIAL:	TITLE: MACRON PSC GANTRY SYSTEM
	UNLESS OTHERWISE SPECIFIED: DIMENSIONS ARE IN MILLIMETERS TOLERANCES UNLESS NOTED: OTHERWISE:	FINISH:	
	SURFACE FINISH ✓ BREAK ALL SHARP EDGES DIMENSIONAL LIMITS APPLY AFTER FINISHING THIRD ANGLE PROJECTION	SCALE: 1:1 SHEET SIZE: C	
	THIS DRAWING IS THE PROPERTY OF MACRON DYNAMICS ANY REPRODUCTIONS SHALL BE FOR QUOTATION, MANUFACTURING OR PURCHASING PURPOSES ONLY. RELEASE OF DRAWINGS TO OTHER CONCERNS DOES NOT CONSTITUTE LICENSING IN ANY WAY. INFORMATION CONTAINED HEREIN IS PROPRIETARY AND CONFIDENTIAL.	SHEET: 1 OF 15 PART NUMBER: MGS-PSC-XX-Z	

WORK ENVELOPE AND GANTRY FOOTPRINT

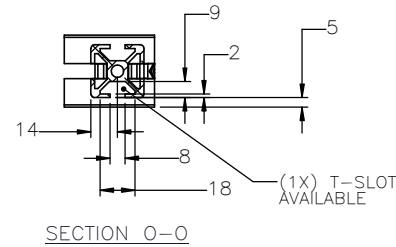
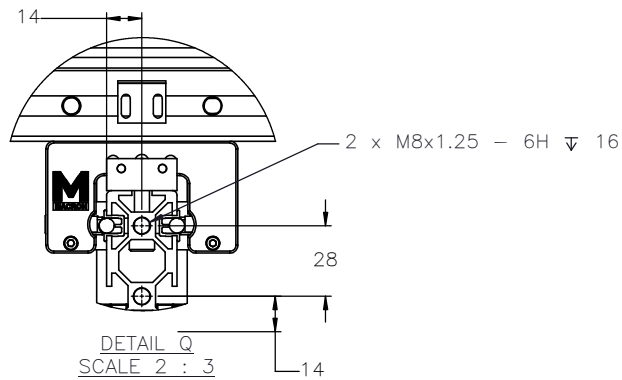
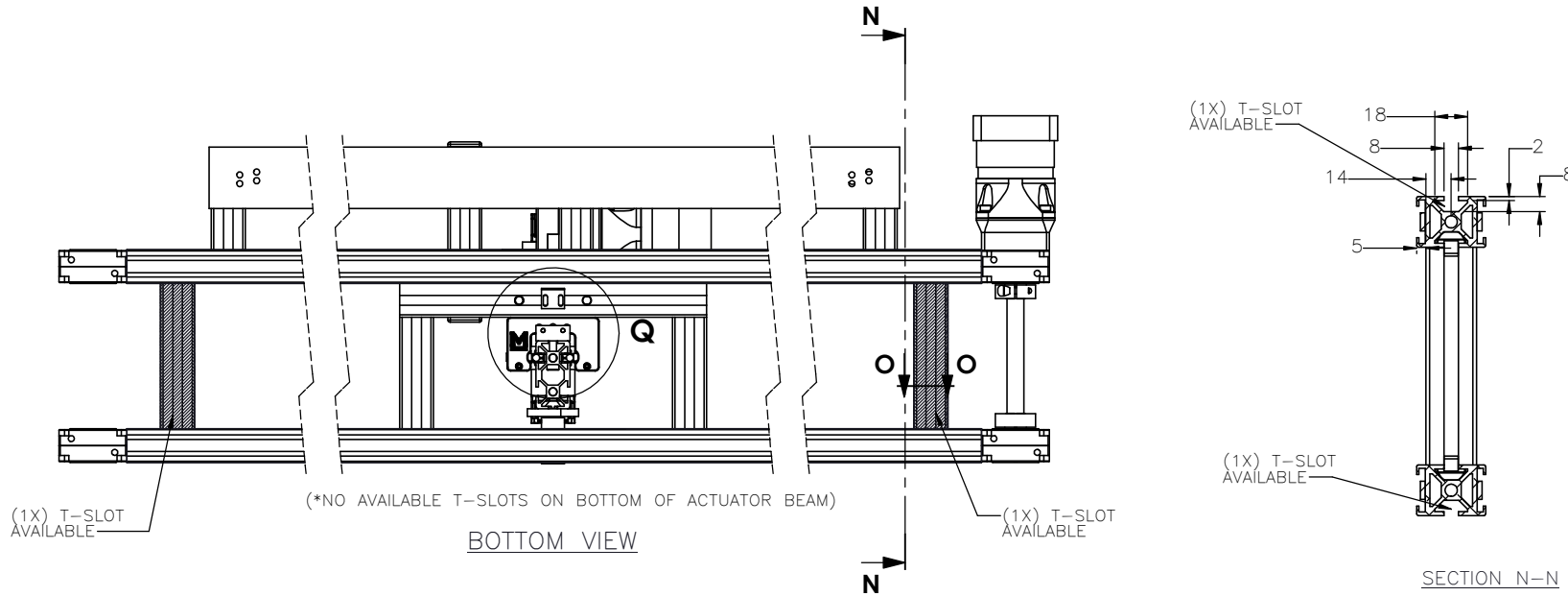



CABLE TRACK CROSS SECTION



 MACRON DYNAMICS INC	DRAWN BY: PHW DATE: 11/26/2017	MATERIAL:	TITLE: MACRON PSC GANTRY SYSTEM
	CHECKED BY: — DATE: DD/MM/YYYY	FINISH:	
	LAST SAVED BY: Paul DATE: 9/8/2023	.X ± .762 .XX ± .254 DIMENSIONS ARE IN MILLIMETERS. TOLERANCES UNLESS NOTED .XXX ± .127 OTHERWISE: ANG ± 0°30'	
SURFACE FINISH <input checked="" type="checkbox"/>		SHEET	SCALE: 1:1
BREAK ALL SHARP EDGES DIMENSIONAL LIMITS APPLY AFTER FINISHING THIRD ANGLE PROJECTION		PART NUMBER 2 OF 15	SHEET SIZE MGS-PSC-XX-Z
<small>THIS DRAWING IS THE PROPERTY OF MACRON DYNAMICS. ANY REPRODUCTIONS SHALL BE FOR QUOTATION, MANUFACTURING OR PURCHASING PURPOSES ONLY. RELEASE OF DRAWINGS TO OTHER CONCERNS DOES NOT CONSTITUTE LICENSING IN ANY WAY. INFORMATION CONTAINED HEREIN IS PROPRIETARY AND CONFIDENTIAL.</small>		REV	C

GANTRY MOUNTING FEATURES

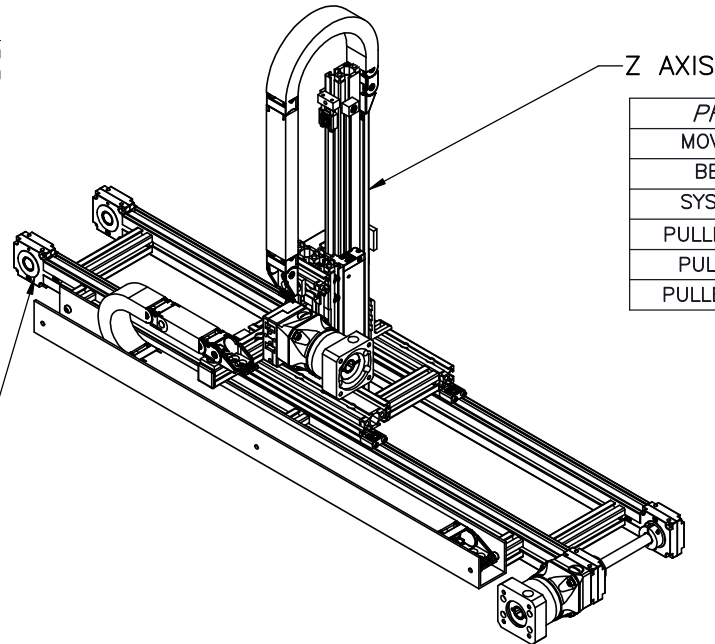


 MACRON DYNAMICS INC	DRAWN BY: PHW DATE: 11/26/2017	MATERIAL:	TITLE: MACRON PSC GANTRY SYSTEM
	CHECKED BY: -- DATE: DD/MM/YYYY	FINISH:	
	LAST SAVED BY: TH DATE: 9/8/2023	UNLESS OTHERWISE SPECIFIED, .XX ± .254 DIMENSIONS ARE IN MILLIMETERS. TOLERANCES, UNLESS NOTED .XXX ± .127 OTHERWISE: ANG ± 0°30'	SCALE 1:1 SHEET SIZE C
	THIS DRAWING IS THE PROPERTY OF MACRON DYNAMICS. ANY REPRODUCTIONS SHALL BE FOR QUOTATION, MANUFACTURING, OR PURCHASING PURPOSES ONLY. RELEASE OF DRAWINGS TO OTHER CONCERNS DOES NOT CONSTITUTE LICENSING IN ANY WAY. INFORMATION CONTAINED HEREIN IS PROPRIETARY AND CONFIDENTIAL.	SURFACE FINISH <input checked="" type="checkbox"/> BREAK ALL SHARP EDGES DIMENSIONAL LIMITS APPLY AFTER FINISHING THIRD ANGLE PROJECTION	SHEET 3 OF 15 PART NUMBER MGS-PSC-XX-Z

MOTOR SIZING INFORMATION

(INCREMENTAL ADDERS REFER TO MASS PER TRAVEL LENGTH)

BASE TRAVELS USED:
 X-TRAVEL = 150mm
 Z-TRAVEL = 150mm



PROPERTY	BASE VALUE (T=150mm)
MOVING MASS	1.566kg(+0.065kg/25mm)
BELT MASS	0.025kg(+0.001kg/25mm)
SYSTEM MASS	3.462kg(+0.065kg/25mm)
PULLEY PITCH ϕ	33.42mm (1.32")
PULLEY WIDTH	16.3mm (0.64")
PULLEY MATERIAL	STEEL

PROPERTY	BASE VALUE (T=150mm)
*MOVING MASS	1.518kg(+0.014kg/25mm)
BELT MASS	0.082kg(+.004kg/25mm)
PULLEY PITCH ϕ	33.42mm (1.32")
PULLEY WIDTH	16.3mm (0.64")
PULLEY MATERIAL	STEEL
TRAVEL PER REV	105mm
CONN. SHAFT LENGTH	198
CONN. SHAFT ϕ	14mm
CONN. SHAFT MASS	.235kg
CONN. SHAFT MATERIAL	STEEL

*SYSTEM MASS OF Z-AXIS NEEDS TO BE ADDED TO THIS

X-TRAVEL = _____ mm
 Z-TRAVEL = _____ mm

NOTE: ALL SUPPLIED MASSES DO NOT INCLUDE CUSTOMER COMPONENTS (MOTORS, CABLES, ETC)

GEARBOX MASS (ADD TO SYSTEM MASSES)		
MPG-014		1.0kg
MRG-014		3.0kg

TOTAL SYSTEM MASS	$(X \text{ TRAVEL} \times .0039) + (Z \text{ TRAVEL} \times .0023) + 8.08 = \text{kg}$		
	DRAWN BY: PHW	DATE: 11/26/2017	MATERIAL:
	CHECKED BY: --	DATE: DD/MM/YYYY	
	LAST SAVED BY: TH	DATE: 9/8/2023	FINISH:
	UNLESS OTHERWISE SPECIFIED, DIMENSIONS ARE IN MILLIMETERS. TOLERANCES UNLESS NOTED OTHERWISE:		
	.X \pm .762	.XX \pm .254	
	.XXX \pm .127	ANG \pm 0°30'	
MACRON DYNAMICS INC	SURFACE FINISH	<input checked="" type="checkbox"/>	TITLE: MACRON PSC GANTRY SYSTEM
THIS DRAWING IS THE PROPERTY OF MACRON DYNAMICS. ANY REPRODUCTIONS SHALL BE FOR QUOTATION, MANUFACTURING OR PURCHASING PURPOSES ONLY. RELEASE OF DRAWINGS TO OTHER CONCERNS DOES NOT CONSTITUTE LICENSING IN ANY WAY. INFORMATION CONTAINED HEREIN IS PROPRIETARY AND CONFIDENTIAL.	BREAK ALL SHARP EDGES	DIMENSIONAL LIMITS APPLY AFTER FINISHING	SCALE 1:1 SHEET SIZE C
	THIRD ANGLE PROJECTION	SHEET 4 OF 15	PART NUMBER MGS-PSC-XX-Z

SPECIFICATIONS

Sensor Type	Inductive
Sensor Size	Fits all 8mm wide T-Slots
Operating Voltage	10-30 VDC
Voltage Drop Across Conducting Sensor	≤1.8 V at 100 mA
Number of Conductors (AWG)	3x26 AWG
Temperature Range	-40°C to 105°C

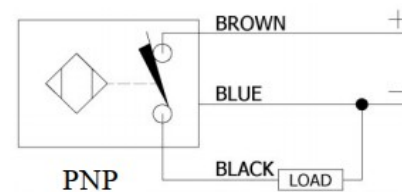
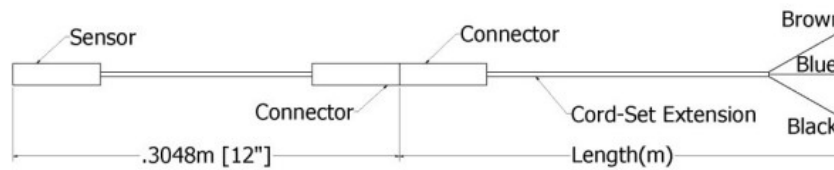
Part Number Configuration

244- _ _ _ - _ _ _

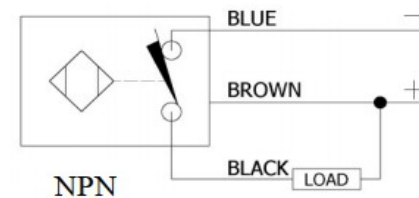
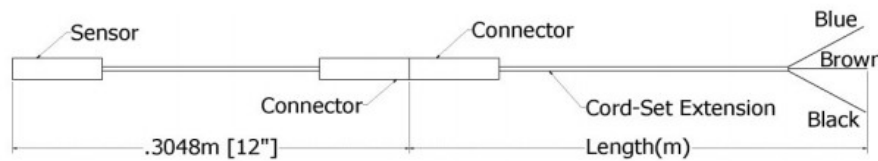
PNP or NPN	NC or NO	02	Meters
PNP or NPN	NC or NO	06	Meters
PNP or NPN	NC or NO	12	Meters

Example: PNP, normally closed, cord-set extension length 6 meters = 244-PNP-NC-06

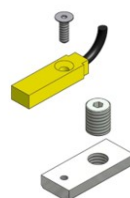
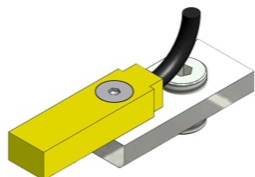
PNP Diagrams



NPN Diagrams



KIT INCLUDES – SENSOR, CORDSET EXTENSION, AND MOUNTING HARDWARE



	DRAWN BY: JA DATE: 10/15/2019 CHECKED BY: -- DATE: DD/MM/YYYY LAST SAVED BY: TH DATE: 9/8/2023	MATERIAL:	TITLE:	
	UNLESS OTHERWISE SPECIFIED, DIMENSIONS ARE IN MILLIMETERS. TOLERANCES UNLESS NOTED OTHERWISE: .X ± .762 .XX ± .254 .XXX ± .127 ANG ± 0°30'	FINISH:	T-SLOT SENSOR KIT	
	SURFACE FINISH: ✓	SHEET: 5 OF 15	SCALE: 1:1	SHEET SIZE: C
	THIS DRAWING IS THE PROPERTY OF MACRON DYNAMICS. ANY REPRODUCTIONS SHALL BE FOR QUOTATION, MANUFACTURING, OR PURCHASING PURPOSES ONLY. RELEASE OF DRAWINGS TO OTHER CONCERNS DOES NOT CONSTITUTE LICENSING IN ANY WAY. INFORMATION CONTAINED HEREIN IS PROPRIETARY AND CONFIDENTIAL.	BREAK ALL SHARP EDGES DIMENSIONAL LIMITS APPLY AFTER FINISHING THIRD ANGLE PROJECTION	PART NUMBER: SENSOR CALL-OUT	REV: C