

MDS-SB2- - - X

GEARBOX MODEL

MPG-064 ___ MPG-084 ___ MPG-114 ___
 MRG-064 ___ MRG-084 ___ MRG-114 ___
 RATIO: _____

FOR DIRECT DRIVE OPTION WITH MMK
 (NO GEARBOX) CHECK HERE: _____

MOTOR INFORMATION

MANUFACTURER: _____
 MODEL: _____

SENSOR INFORMATION X-AXIS:

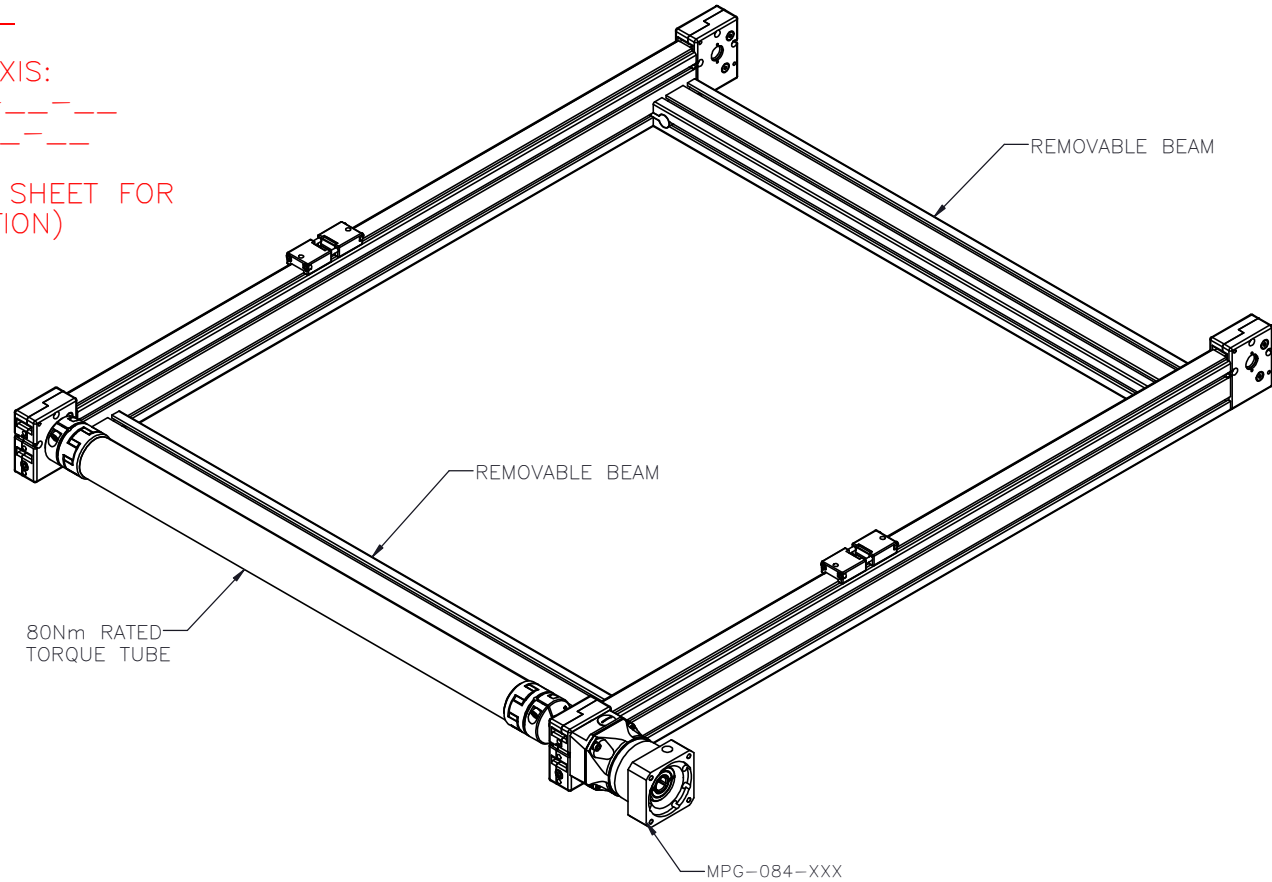
HOME-QTY ___ 244-____-____-____
 EOT-QTY ___ 244-____-____-____

(SEE T-SLOT SENSOR KIT SHEET FOR
 PART NUMBER CONFIGURATION)

CENTER TO CENTER DISTANCE (mm)
 CENTER TO CENTER IN INCREMENTS OF 25mm
 LIMITS: 500mm-2950mm

ENTER X-AXIS TRAVEL
 TRAVEL IN INCREMENTS OF 25mm
 TRAVEL LIMITS: 150mm-5825mm

*IF TRAVEL IS
 OUTSIDE LIMITS
 LISTED, CONTACT
 MACRON*




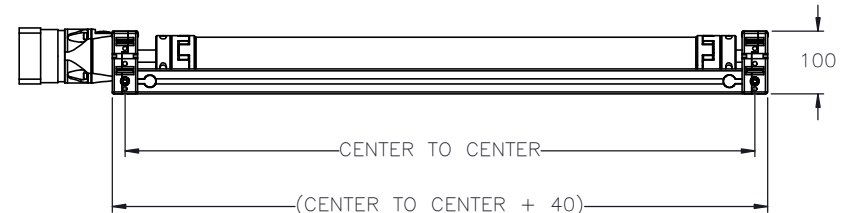
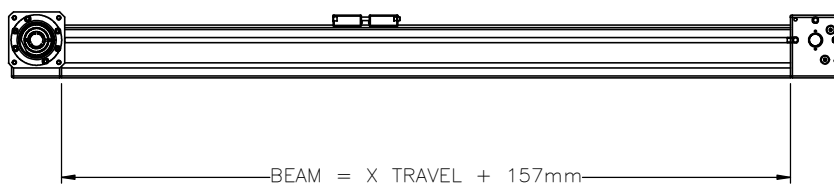
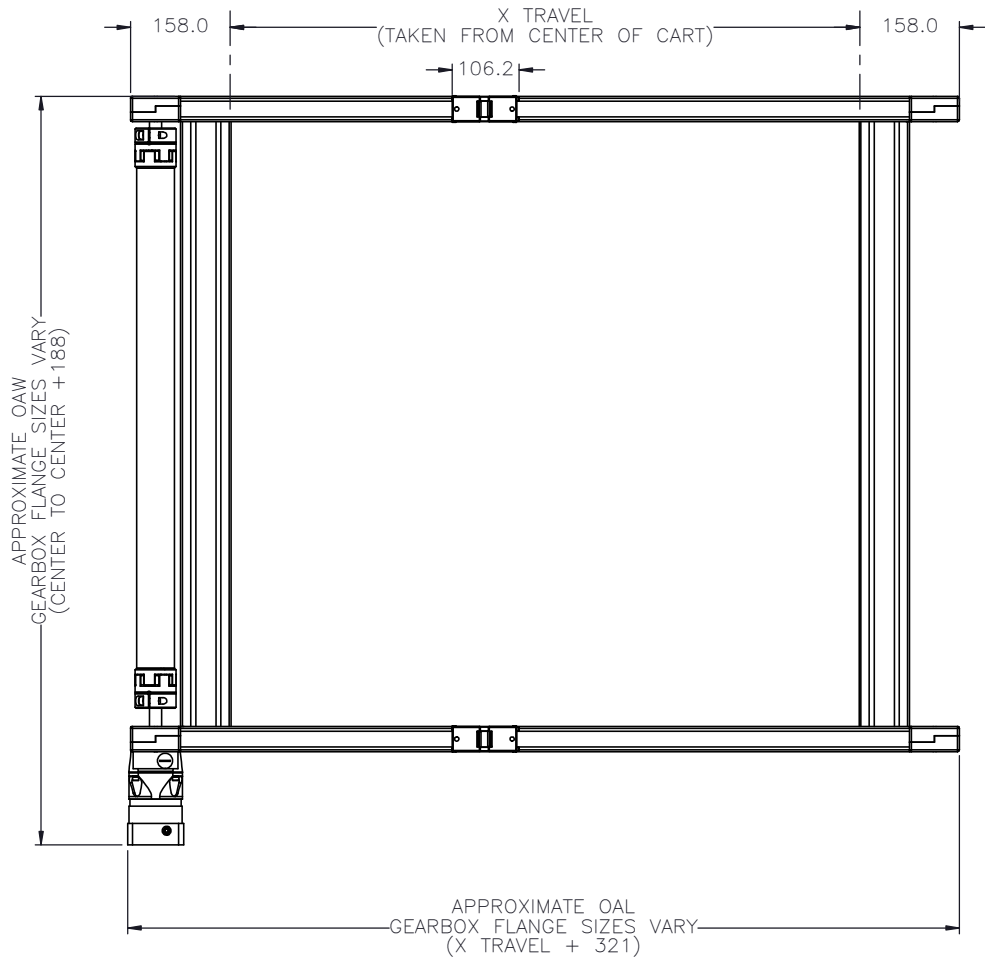
APPROVED: _____

SIGN & PRINT


DATE: _____

PO:REFERENCE#: _____

 MACRON DYNAMICS INC	DRAWN BY: PHW DATE: 11/26/2017	MATERIAL:	TITLE: MACRON SB2 DUAL SYSTEM	
	CHECKED BY: _____ DATE: DD/MM/YYYY	FINISH:		
	LAST SAVED BY: Paul DATE: 7/12/2023	UNLESS OTHERWISE SPECIFIED: .X ± .762 DIMENSIONS ARE IN MILLIMETERS: .XX ± .254 TOLERANCES UNLESS NOTED: .XXX ± .127 OTHERWISE: ANG ± 0°30'		
THIS DRAWING IS THE PROPERTY OF MACRON DYNAMICS. ANY REPRODUCTIONS SHALL BE FOR QUOTATION, MANUFACTURING OR PURCHASING PURPOSES ONLY. RELEASE OF DRAWINGS TO OTHER CONCERNS DOES NOT CONSTITUTE LICENSING IN ANY WAY. INFORMATION CONTAINED HEREIN IS PROPRIETARY AND CONFIDENTIAL.	SURFACE FINISH <input checked="" type="checkbox"/>	BREAK ALL SHARP EDGES DIMENSIONAL LIMITS APPLY AFTER FINISHING THIRD ANGLE PROJECTION	SHEET: 1 OF 9 PART NUMBER: MDS-SB2-X-X-X	SCALE: 1:1 SHEET SIZE: C REV: 00

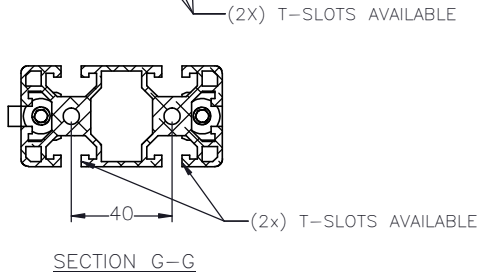
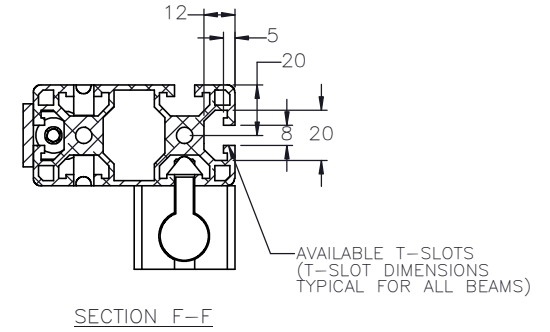
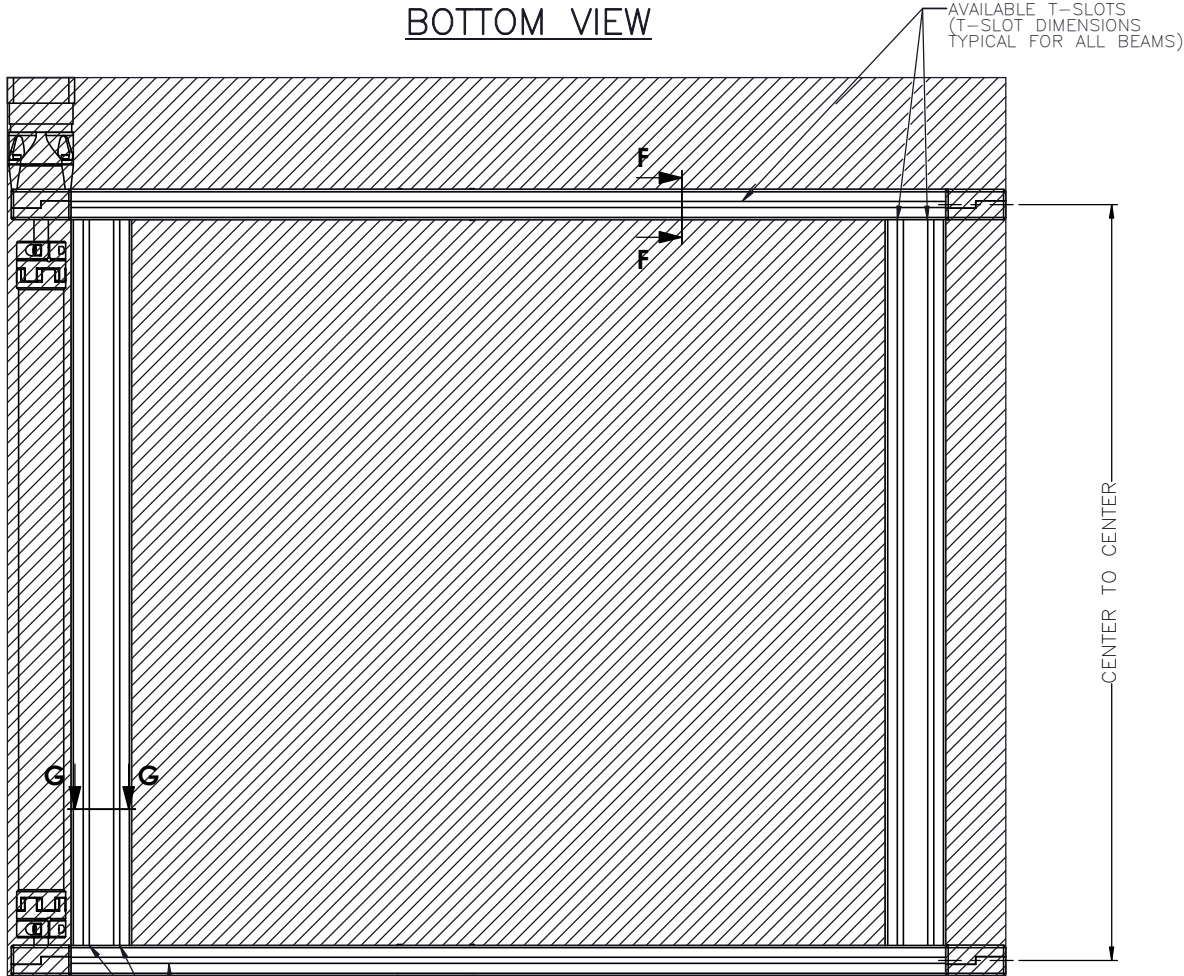


GANTRY FOOTPRINT

 MACRON DYNAMICS INC	DRAWN BY: PHW DATE: 11/26/2017	MATERIAL:	TITLE: CABLE TRACK
	CHECKED BY: DATE: DD/MM/YYYY	FINISH:	
	LAST SAVED BY: Paul DATE: 7/12/2023		UNLESS OTHERWISE SPECIFIED: DIMENSIONS ARE IN MILLIMETERS TOLERANCES UNLESS NOTED: .XX ± .254 .XXX ± .127 OTHERWISE: ANG ± 0°30'
	THIS DRAWING IS THE PROPERTY OF MACRON DYNAMICS. ANY REPRODUCTIONS SHALL BE FOR QUOTATION, MANUFACTURING, OR PURCHASING PURPOSES ONLY. RELEASE OF DRAWINGS TO OTHER CONCERNS DOES NOT CONSTITUTE LICENSING IN ANY WAY. INFORMATION CONTAINED HEREIN IS PROPRIETARY AND CONFIDENTIAL.	SURFACE FINISH <input checked="" type="checkbox"/>	BREAK ALL SHARP EDGES DIMENSIONAL LIMITS APPLY AFTER FINISHING THIRD ANGLE PROJECTION

GANTRY MOUNTING FEATURES

BOTTOM VIEW



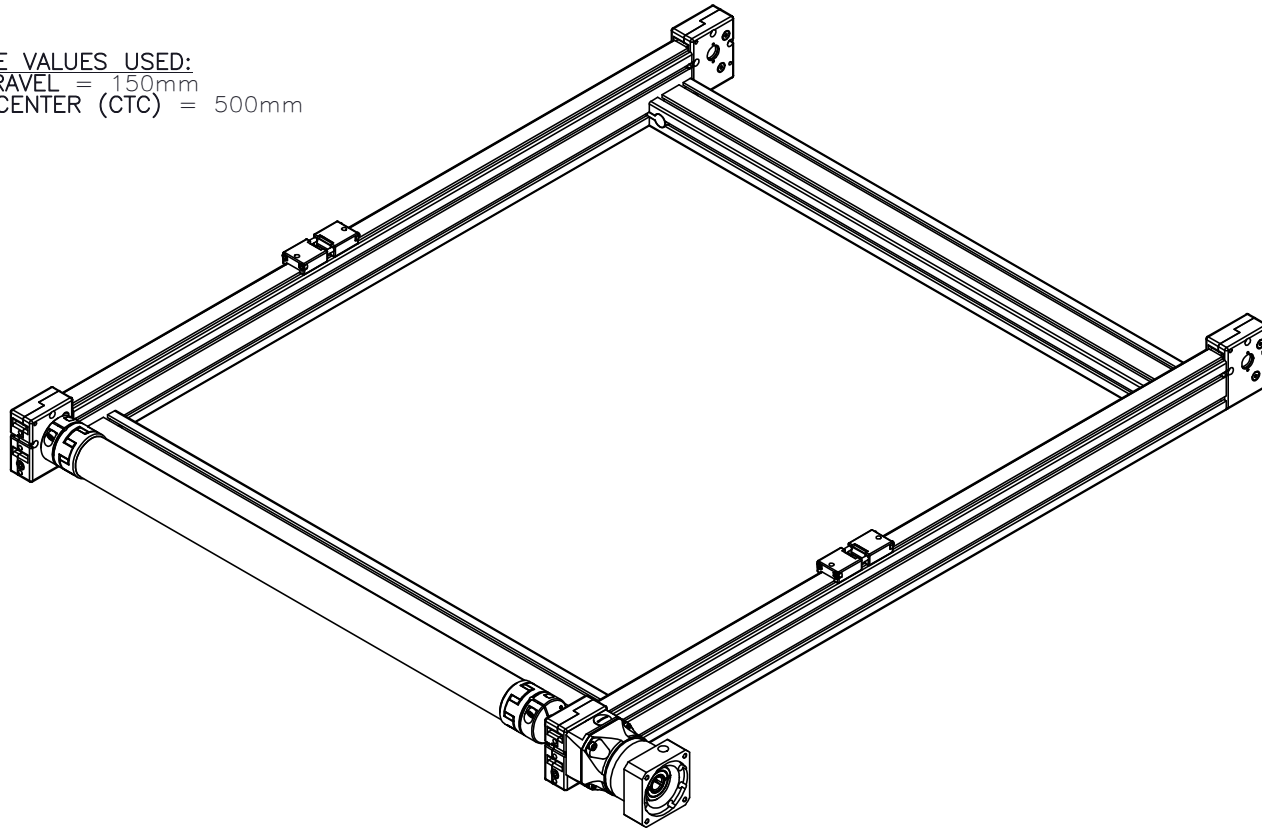
 MACRON DYNAMICS INC	DRAWN BY: PHW DATE: 11/26/2017	MATERIAL:	TITLE: MACRON SB2 DUAL SYSTEM
	CHECKED BY: DATE: DD/MM/YYYY	FINISH:	
	LAST SAVED BY: Paul DATE: 7/12/2023	UNLESS OTHERWISE SPECIFIED: .X ± .762 DIMENSIONS ARE IN MILLIMETERS: .XX ± .254 TOLERANCES UNLESS NOTED: .XXX ± .127 OTHERWISE: ANG ± 0°30'	SCALE: 1:1 SHEET SIZE: C
	SURFACE FINISH: <input checked="" type="checkbox"/>	BREAK ALL SHARP EDGES DIMENSIONAL LIMITS APPLY AFTER FINISHING THIRD ANGLE PROJECTION	SHEET: 3 OF 9 PART NUMBER: MDS-SB2-X-X-X

THIS DRAWING IS THE PROPERTY OF MACRON DYNAMICS. ANY REPRODUCTIONS SHALL BE FOR QUOTATION, MANUFACTURING, OR PURCHASING PURPOSES ONLY. RELEASE OF DRAWINGS TO OTHER CONCERNS DOES NOT CONSTITUTE LICENSING IN ANY WAY. INFORMATION CONTAINED HEREIN IS PROPRIETARY AND CONFIDENTIAL.

MOTOR SIZING WORKSHEET

(INCREMENTAL ADDERS REFER TO MASS PER TRAVEL LENGTH)

BASE VALUES USED:
 X-TRAVEL = 150mm
 CENTER-TO-CENTER (CTC) = 500mm




PROPERTY	BASE VALUE (T=150mm, CTC=500mm)
**MOVING MASS	1.90kg(+.0241kg/25mm)
BELT MASS	0.34kg(+.012kg/25mm)
PULLEY PITCH ϕ	47.75mm (1.88")
PULLEY WIDTH	28.9mm (1.14")
PULLEY MATERIAL	STEEL
TORQUE TUBE LENGTH	421mm
TORQUE TUBE ϕ	60mm
TORQUE TUBE MASS	1.544kg(+.036kg/25mm)
TORQUE TUBE MATERIAL	ANODIZED ALUMINUM ELASTOMER STYLE COUPLINGS WITH HUB
TRAVEL PER REV	150mm

X-TRAVEL = _____ mm
 CENTER TO CENTER (CTC) = _____ mm

NOTE: ALL SUPPLIED MASSES DO NOT INCLUDE CUSTOMER COMPONENTS (MOTORS, CABLES, ETC)

GEARBOX MASS (ADD TO SYSTEM MASS)	MPG-064	1.0kg
	MPG-084	2.3kg
	MPG-114	5.8kg
	MRG-064	3.0kg
	MRG-084	5.6kg
MRG-114	15.0kg	

TOTAL SYSTEM MASS	(X-TRAVEL x .0068) + (CTC x .0078) + 5.394 = kg		
 MACRON DYNAMICS INC	DRAWN BY: PHW	DATE: 11/26/2017	MATERIAL:
	CHECKED BY:	DATE: DD/MM/YYYY	TITLE: MACRON SB2 DUAL SYSTEM
	LAST SAVED BY: Paul	DATE: 7/12/2023	
	<small>UNLESS OTHERWISE SPECIFIED, DIMENSIONS ARE IN MILLIMETERS. TOLERANCES UNLESS NOTED OTHERWISE:</small> .X ± .762 .XX ± .254 .XXX ± .127 ANG ± 0°30'		FINISH:
<small>THIS DRAWING IS THE PROPERTY OF MACRON DYNAMICS. ANY REPRODUCTIONS SHALL BE FOR QUOTATION, MANUFACTURING OR PURCHASING PURPOSES ONLY. RELEASE OF DRAWINGS TO OTHER CONCERNS DOES NOT CONSTITUTE LICENSING IN ANY WAY. INFORMATION CONTAINED HEREIN IS PROPRIETARY AND CONFIDENTIAL.</small>	SURFACE FINISH <input checked="" type="checkbox"/>	BREAK ALL SHARP EDGES DIMENSIONAL LIMITS APPLY AFTER FINISHING	SHEET: 4 OF 9 PART NUMBER: MDS-SB2-X-X-X REV: 00

SPECIFICATIONS

Sensor Type	Inductive
Sensor Size	Fits all 8mm wide T-Slots
Operating Voltage	10-30 VDC
Voltage Drop Across Conducting Sensor	≤1.8 V at 100 mA
Number of Conductors (AWG)	3x26 AWG
Temperature Range	-40°C to 105°C

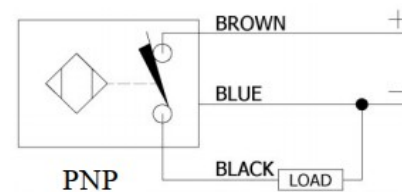
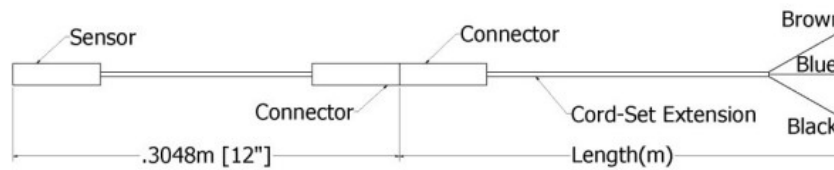
Part Number Configuration

244- _ _ _ - _ _ _

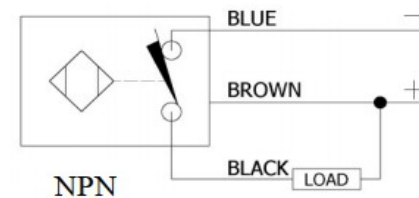
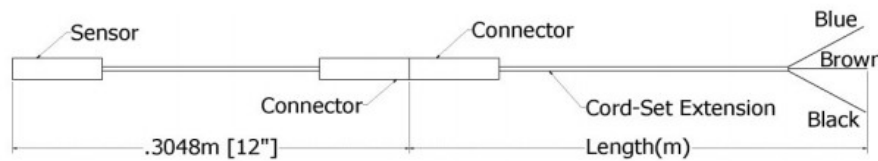
PNP or NPN	NC or NO	02	Meters
PNP or NPN	NC or NO	06	Meters
PNP or NPN	NC or NO	12	Meters

Example: PNP, normally closed, cord-set extension length 6 meters = 244-PNP-NC-06

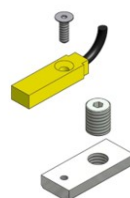
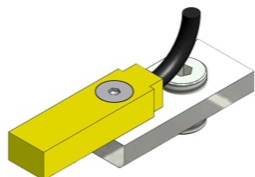
PNP Diagrams




NPN Diagrams



KIT INCLUDES – SENSOR, CORDSET EXTENSION, AND MOUNTING HARDWARE



 MACRON DYNAMICS INC	DRAWN BY: PHW DATE: 11/26/2017 CHECKED BY: DATE: DD/MM/YYYY LAST SAVED BY: Paul DATE: 7/12/2023	MATERIAL:	TITLE:	
	UNLESS OTHERWISE SPECIFIED, DIMENSIONS ARE IN MILLIMETERS. TOLERANCES UNLESS NOTED OTHERWISE: .XX ± .254 .XXX ± .127 ANG ± 0°30'	FINISH:	T-SLOT SENSOR KIT	
	SURFACE FINISH ✓	SHEET 5 OF 9	PART NUMBER	SCALE 1:1 SHEET SIZE C
	BREAK ALL SHARP EDGES DIMENSIONAL LIMITS APPLY AFTER FINISHING THIRD ANGLE PROJECTION	MDS-SB2-X-X-X		REV