

MDC-R6S-E-BC---

PULLEY PITCH DIAMETER	47.75mm (1.880")
PULLEY WIDTH	28.9mm (1.138")
PULLEY MATERIAL	STEEL
BELT WEIGHT (kg)	((TRAVEL IN METERS x 2)+.82) x .12
TRAVEL PER REV.	150mm
TRAVEL MIN.	150mm
TRAVEL MAX.	5825mm
CART WEIGHT (kg)	0.59 PER CART
SYSTEM WEIGHT (kg)	(TRAVEL IN METERS x 3.9) + 5.1

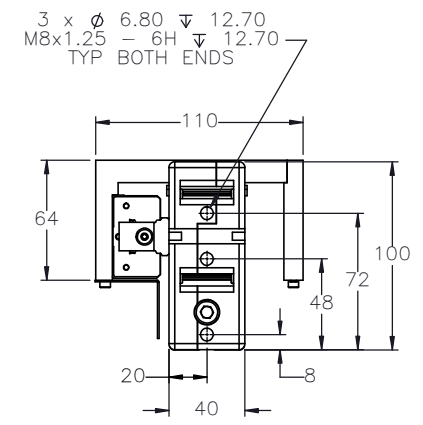
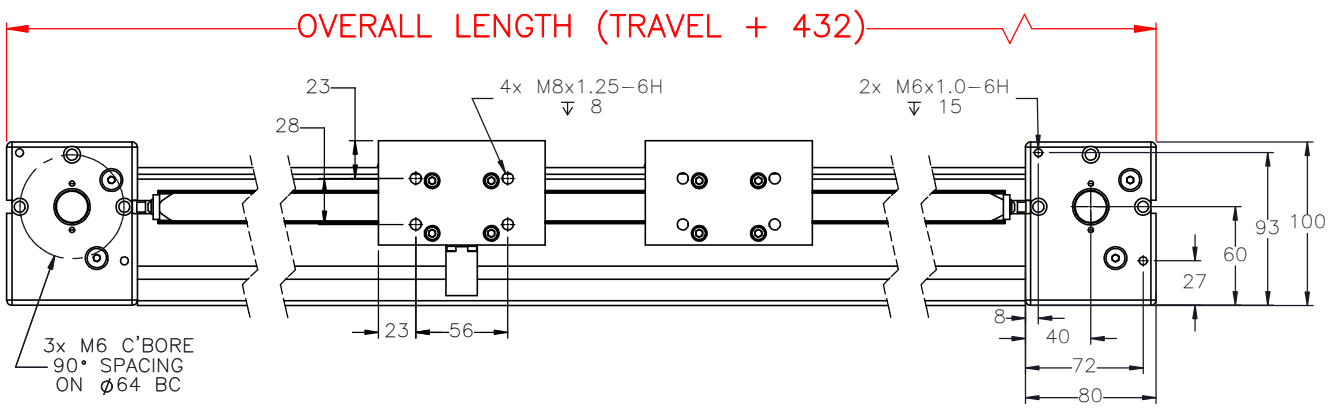
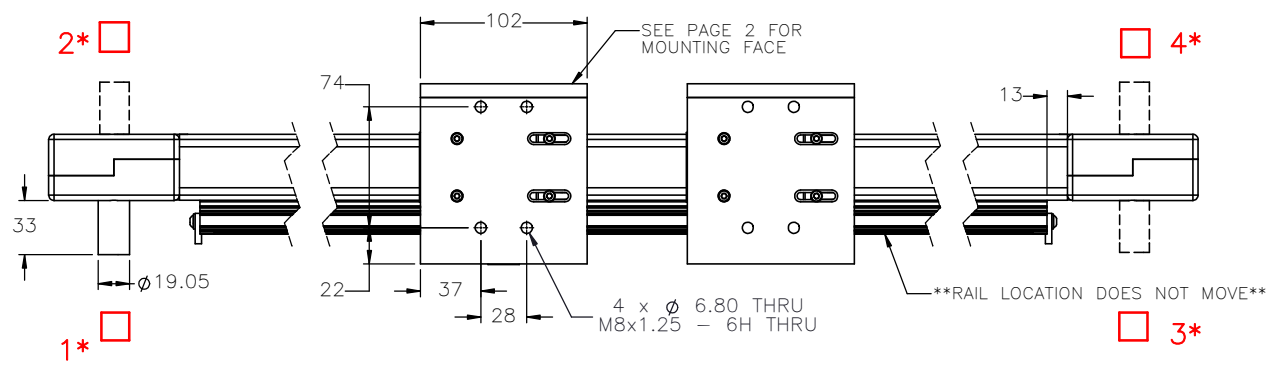
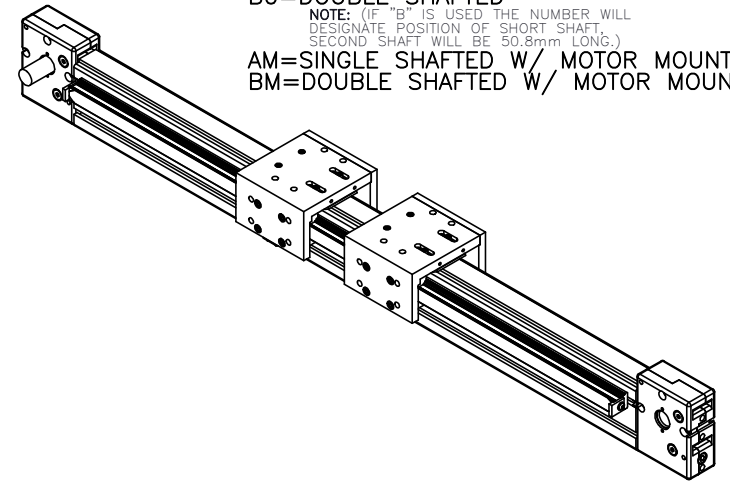
ENTER
TRAVEL IN INCREMENTS OF 25mm

SELECT
DRIVE SHAFT LOCATION*

SHAFTING TYPE
A0= SINGLE SHAFTED
B0= DOUBLE SHAFTED


NOTE: (IF "B" IS USED THE NUMBER WILL DESIGNATE POSITION OF SHORT SHAFT. SECOND SHAFT WILL BE 50.8mm LONG.)

AM= SINGLE SHAFTED W/ MOTOR MOUNT
BM= DOUBLE SHAFTED W/ MOTOR MOUNT



APPROVED: _____

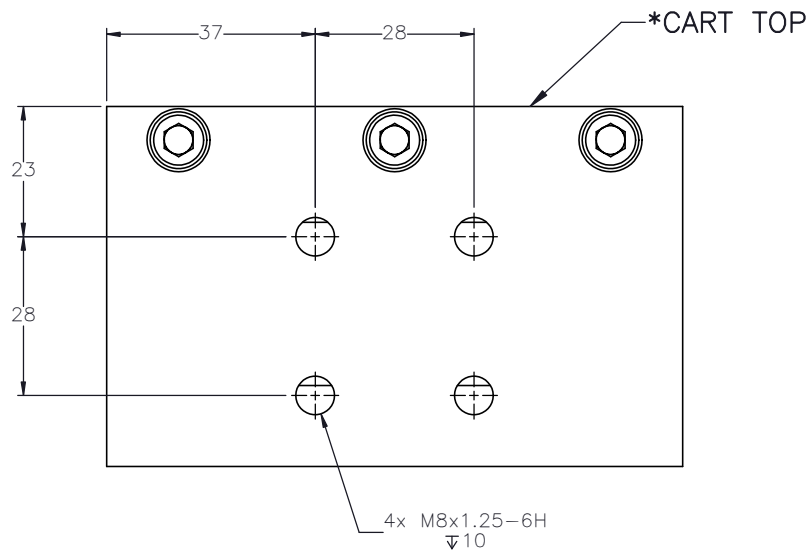
DATE: _____

 MACRON DYNAMICS INC	DRAWN BY: PHW DATE: 11/26/2017 CHECKED BY: --- DATE: DD/MM/YYYY LAST SAVED BY: Paul DATE: 8/3/2020	MATERIAL:	TITLE:	
	UNLESS OTHERWISE SPECIFIED: DIMENSIONS ARE IN INCHES: TOLERANCES UNLESS NOTED: OTHERWISE:	.XX ± .03 .XX ± .010 .XXX ± .005 ANG ± 0°30'	FINISH:	MACRON 6 DUAL CART RAIL ACTUATOR
	SURFACE FINISH <input checked="" type="checkbox"/>	BREAK ALL SHARP EDGES DIMENSIONAL LIMITS APPLY AFTER FINISHING	SHEET	SCALE 1:1 SHEET SIZE C
	THIRD ANGLE PROJECTION	1 OF 2	PART NUMBER	MDC-R6S

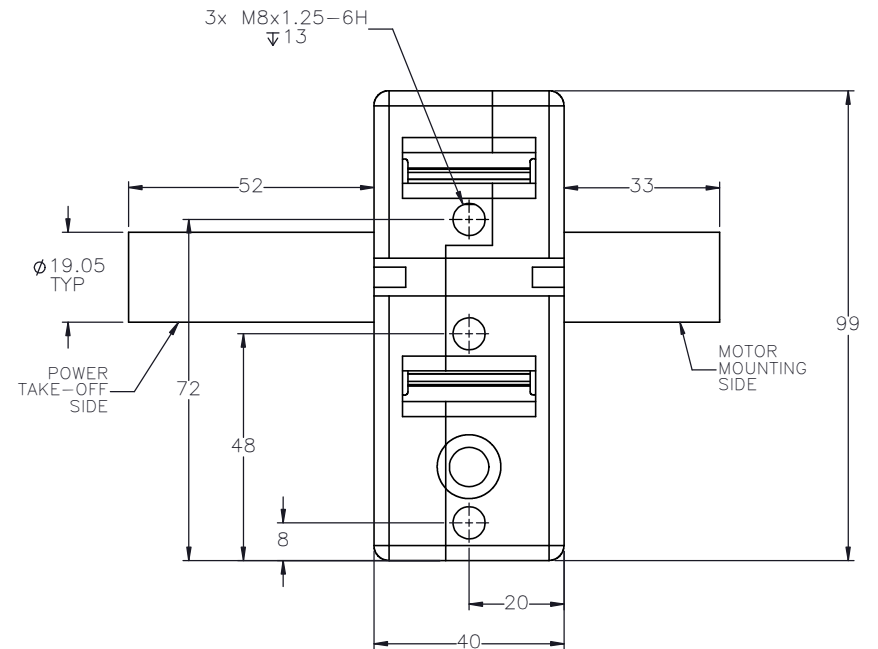
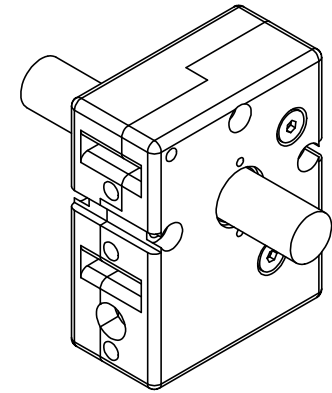
THIS DRAWING IS THE PROPERTY OF MACRON DYNAMICS. ANY REPRODUCTIONS SHALL BE FOR QUOTATION, MANUFACTURING OR PURCHASING PURPOSES ONLY. RELEASE OF DRAWINGS TO OTHER CONCERNS DOES NOT CONSTITUTE LICENSING IN ANY WAY. INFORMATION CONTAINED HEREIN IS PROPRIETARY AND CONFIDENTIAL.

SPECIFICATIONS ARE SUBJECT TO CHANGE WITHOUT NOTICE

CART MOUNTING FEATURES

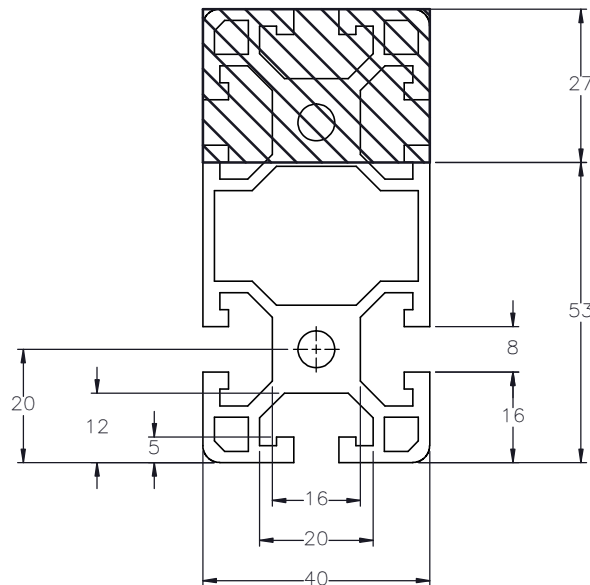


DOUBLE SHAFTED PULLEY



CUSTOMER ACCESSIBLE MOUNTING FEATURES, T-NUT SLOTS

SUGGESTED MOUNTING ACCESSORY
MACRON P/N: M22138



MACRON DYNAMICS INC

DRAWN BY: PHW	DATE: 11/26/2017
CHECKED BY: --	DATE: DD/MM/YYYY
LAST SAVED BY: Tim	DATE: 8/3/2020
UNLESS OTHERWISE SPECIFIED, DIMENSIONS ARE IN INCHES. TOLERANCES UNLESS NOTED OTHERWISE:	
.X ± .03	
.XX ± .010	
.XXX ± .005	
ANG ± 0°30'	

MATERIAL:
FINISH:

TITLE: PULLEY ASSY 40-25, DOUBLE SHAFTED, 3/4"
SCALE: 1:1
SHEET SIZE: C

THIS DRAWING IS THE PROPERTY OF MACRON DYNAMICS. ANY REPRODUCTIONS SHALL BE FOR QUOTATION, MANUFACTURING OR PURCHASING PURPOSES ONLY. RELEASE OF DRAWINGS TO OTHER CONCERNS DOES NOT CONSTITUTE LICENSING IN ANY WAY. INFORMATION CONTAINED HEREIN IS PROPRIETARY AND CONFIDENTIAL.

SURFACE FINISH	✓
BREAK ALL SHARP EDGES	
DIMENSIONAL LIMITS APPLY AFTER FINISHING	
THIRD ANGLE PROJECTION	

SHEET	PART NUMBER
2 OF 2	MDC-R6S

REV

SPECIFICATIONS ARE SUBJECT TO CHANGE WITHOUT NOTICE