

MDC-R20-G-BC- -

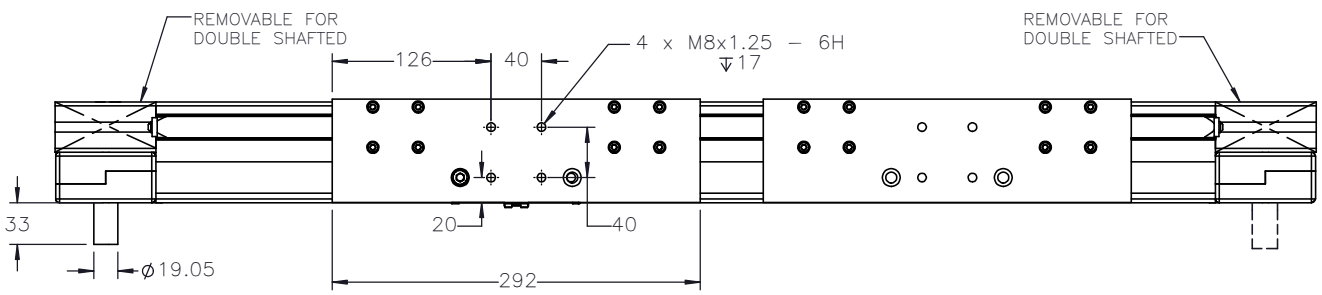
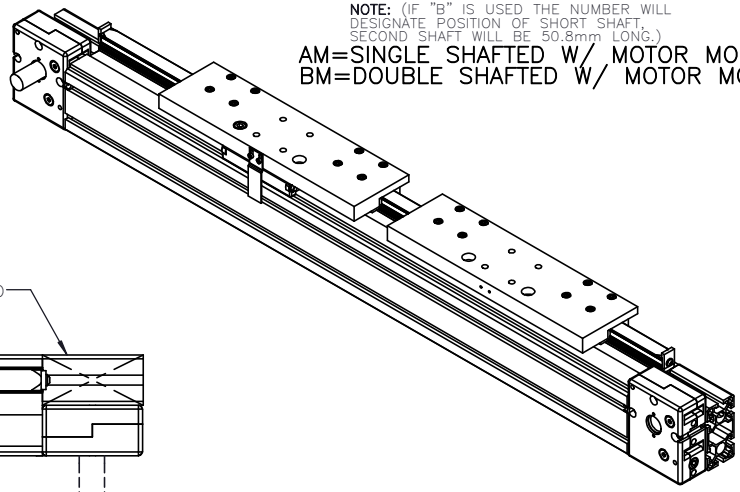
| | |
|-----------------------|--|
| PULLEY PITCH DIAMETER | 47.75mm (1.880") |
| PULLEY WIDTH | 28.9mm (1.138") |
| PULLEY MATERIAL | STEEL |
| BELT WEIGHT (kg) | $((\text{TRAVEL IN METERS} \times 2) + 1.57) \times .12$ |
| TRAVEL PER REV. | 150mm |
| TRAVEL MIN. | 150mm |
| TRAVEL MAX. | 5650mm |
| CART WEIGHT (kg) | 1.81 PER CART |
| SYSTEM WEIGHT (kg) | $(\text{TRAVEL IN METERS} \times 7.9) + 11.5$ |

ENTER
TRAVEL IN INCREMENTS OF 25mm

SELECT
DRIVE SHAFT LOCATION

SHAFTING TYPE
AO=SINGLE SHAFTED
BO=DOUBLE SHAFTED

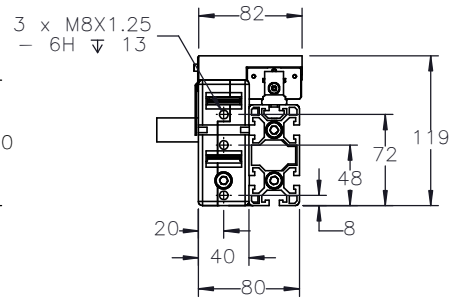
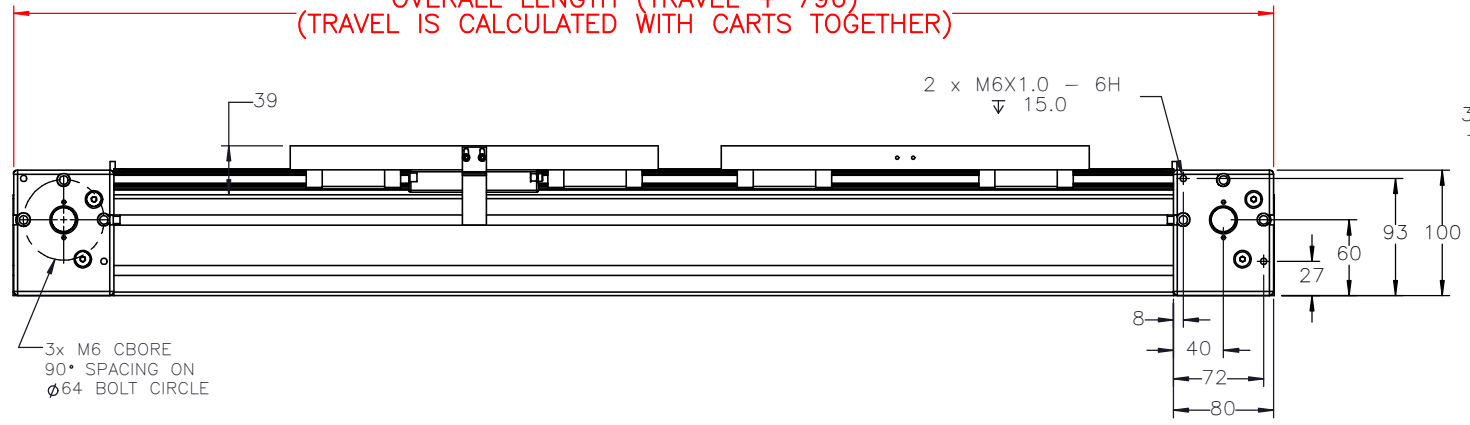
NOTE: (IF "B" IS USED THE NUMBER WILL DESIGNATE POSITION OF SHORT SHAFT. SECOND SHAFT WILL BE 50.8mm LONG.)
AM=SINGLE SHAFTED W/ MOTOR MOUNT
BM=DOUBLE SHAFTED W/ MOTOR MOUNT



1*

3*

OVERALL LENGTH (TRAVEL + 796)
(TRAVEL IS CALCULATED WITH CARTS TOGETHER)



APPROVED: _____

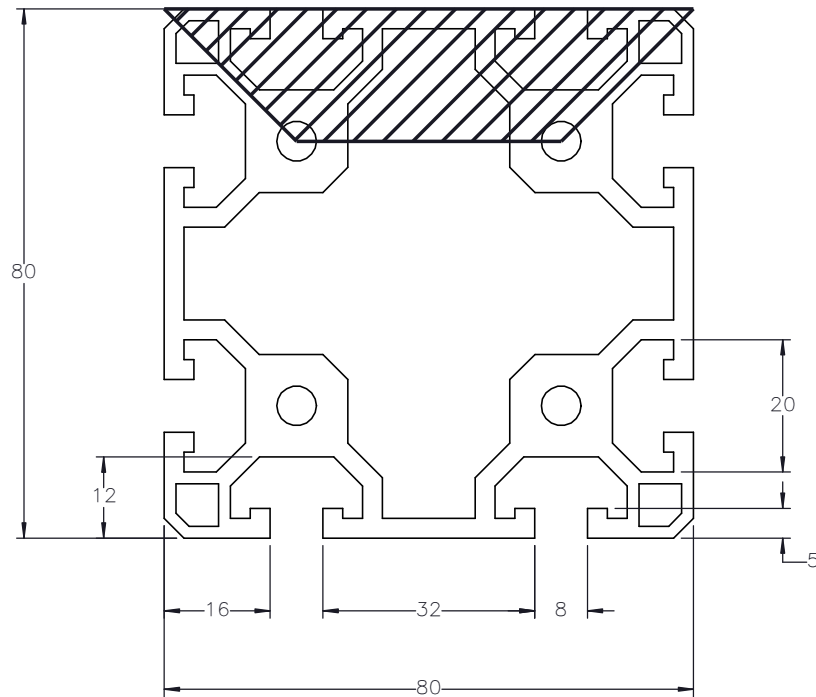
DATE: _____

| | | | | |
|--|---|------------------|---|--|
| | MODEL BY: PHW | DATE: 11/26/2017 | MATERIAL: | TITLE: MACRON DUAL CART RAIL ACTUATOR |
| | DRAWING BY: | DATE: | FINISH: | |
| | LAST SAVED BY: Paul | DATE: 8/3/2020 | | |
| | UNLESS OTHERWISE SPECIFIED: DIMENSIONS ARE IN MILLIMETERS TOLERANCES UNLESS NOTED OTHERWISE: | | .X ± .762 .XX ± .254 .XXX ± .127 ANG ± 0°30' | |
| SURFACE FINISH ∇ BREAK ALL SHARP EDGES DIMENSIONAL LIMITS APPLY AFTER FINISHING | | | SHEET 1 OF 2 PART NUMBER MDC-R20 | SCALE 1:1 SHEET SIZE C REV 00 |

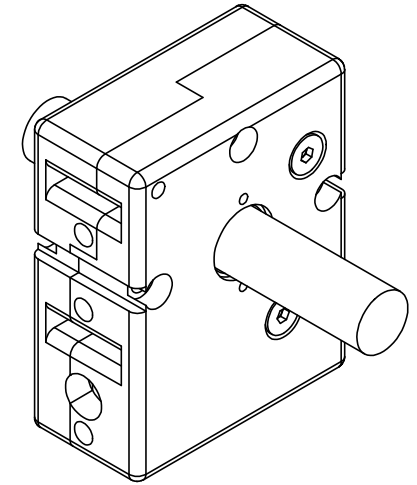
SPECIFICATIONS ARE SUBJECT TO CHANGE WITHOUT NOTICE

THIS DRAWING IS THE PROPERTY OF MACRON DYNAMICS. ANY REPRODUCTIONS SHALL BE FOR QUOTATION, MANUFACTURING OR PURCHASING PURPOSES ONLY. RELEASE OF DRAWINGS TO OTHER CONCERNS DOES NOT CONSTITUTE LICENSING IN ANY WAY. INFORMATION CONTAINED HEREIN IS PROPRIETARY AND CONFIDENTIAL.

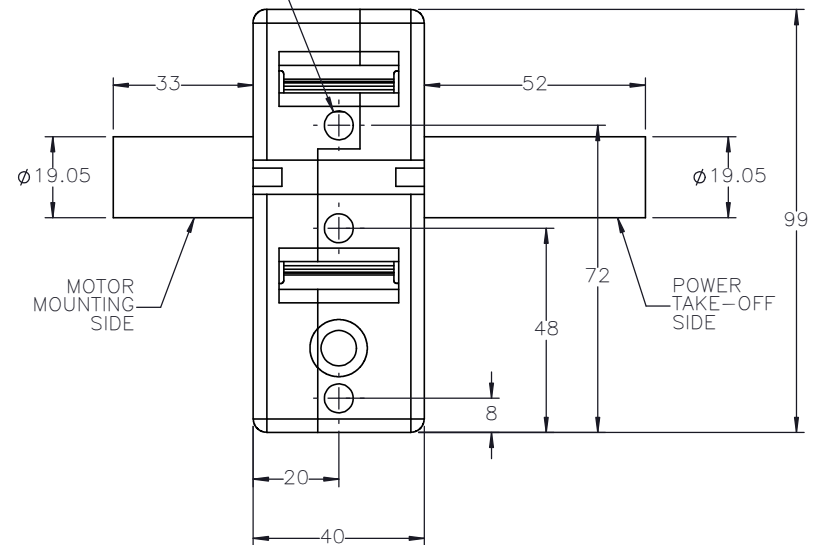
ACTUATOR BODY MOUNTING FEATURES T-NUT SLOTS



DOUBLE SHAFTED PULLEY



(3x) M8X1.25 - 6H ∇ 13



MACRON DYNAMICS INC

| | |
|--|------------------|
| DRAWN BY: PHW | DATE: 11/26/2017 |
| CHECKED BY: | DATE: |
| LAST SAVED BY: TH | DATE: 8/3/2020 |
| UNLESS OTHERWISE SPECIFIED, DIMENSIONS ARE IN INCHES. TOLERANCES UNLESS NOTED OTHERWISE: .X ± .03 .XX ± .010 .XXX ± .005 ANG ± 0°30' | |

| | |
|-----------|-----|
| MATERIAL: | |
| FINISH: | N/A |

| | |
|------------|--------------------------------------|
| TITLE: | MACRON DUAL CART RAIL ACTUATOR |
| SCALE: 1:1 | SHEET SIZE: C |

THIS DRAWING IS THE PROPERTY OF MACRON DYNAMICS
ANY REPRODUCTIONS SHALL BE FOR QUOTATION,
MANUFACTURING OR PURCHASING PURPOSES ONLY.
RELEASE OF DRAWINGS TO OTHER CONCERNS DOES NOT
CONSTITUTE LICENSING IN ANY WAY. INFORMATION
CONTAINED HEREIN IS PROPRIETARY AND CONFIDENTIAL.

SURFACE FINISH
BREAK ALL SHARP EDGES
DIMENSIONAL LIMITS APPLY AFTER FINISHING
THIRD ANGLE PROJECTION

SHEET
2 OF 2

PART NUMBER
MDC-R20

REV
00

SPECIFICATIONS ARE SUBJECT
TO CHANGE WITHOUT NOTICE