

MDC-M6S-E-BC--

| | |
|-----------------------|---|
| PULLEY PITCH DIAMETER | 47.75mm (1.880") |
| PULLEY WIDTH | 28.9mm (1.138") |
| PULLEY MATERIAL | STEEL |
| BELT WEIGHT (kg) | $((\text{TRAVEL IN METERS} \times 2) + .85) \times .12$ |
| TRAVEL PER REV. | 150mm |
| TRAVEL MIN. | 150mm |
| TRAVEL MAX. | 5825mm |
| CART WEIGHT (kg) | 1.59 PER CART |
| SYSTEM WEIGHT (kg) | $(\text{TRAVEL IN METERS} \times 3.9) + 4.7$ |

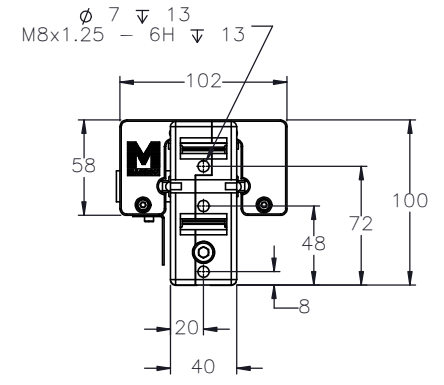
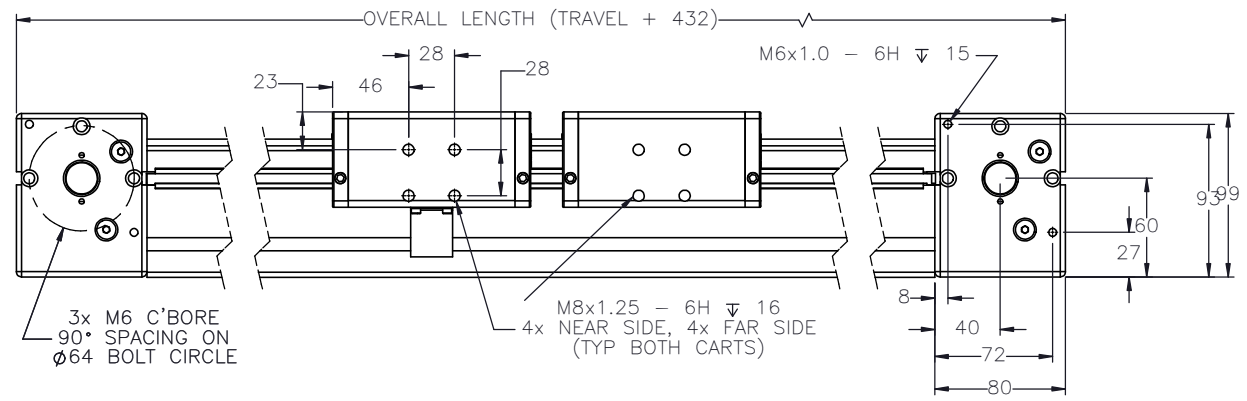
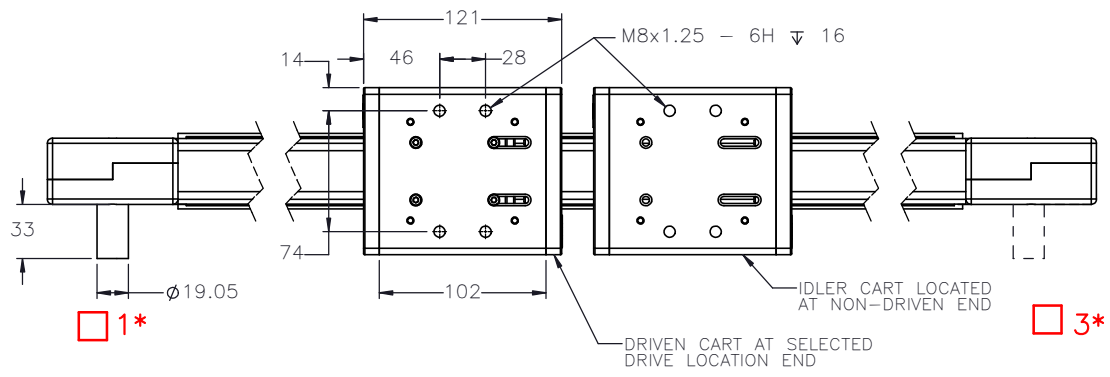
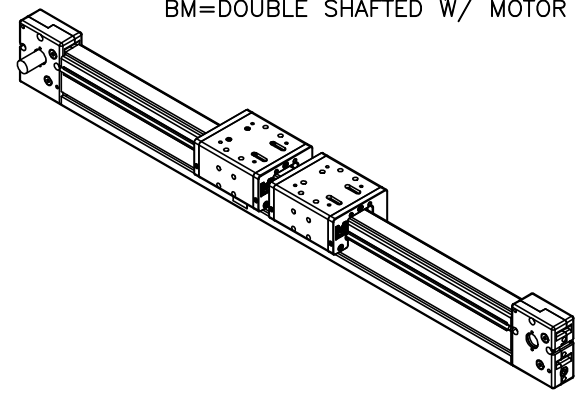
ENTER
TRAVEL IN INCREMENTS OF 25mm

SELECT
DRIVE SHAFT LOCATION*

SHAFTING TYPE
A0= SINGLE SHAFTED
B0= DOUBLE SHAFTED

NOTE: (IF "B" IS USED THE NUMBER WILL DESIGNATE POSITION OF SHORT SHAFT. SECOND SHAFT WILL BE 50.8mm LONG.)

AM= SINGLE SHAFTED W/ MOTOR MOUNT
BM= DOUBLE SHAFTED W/ MOTOR MOUNT



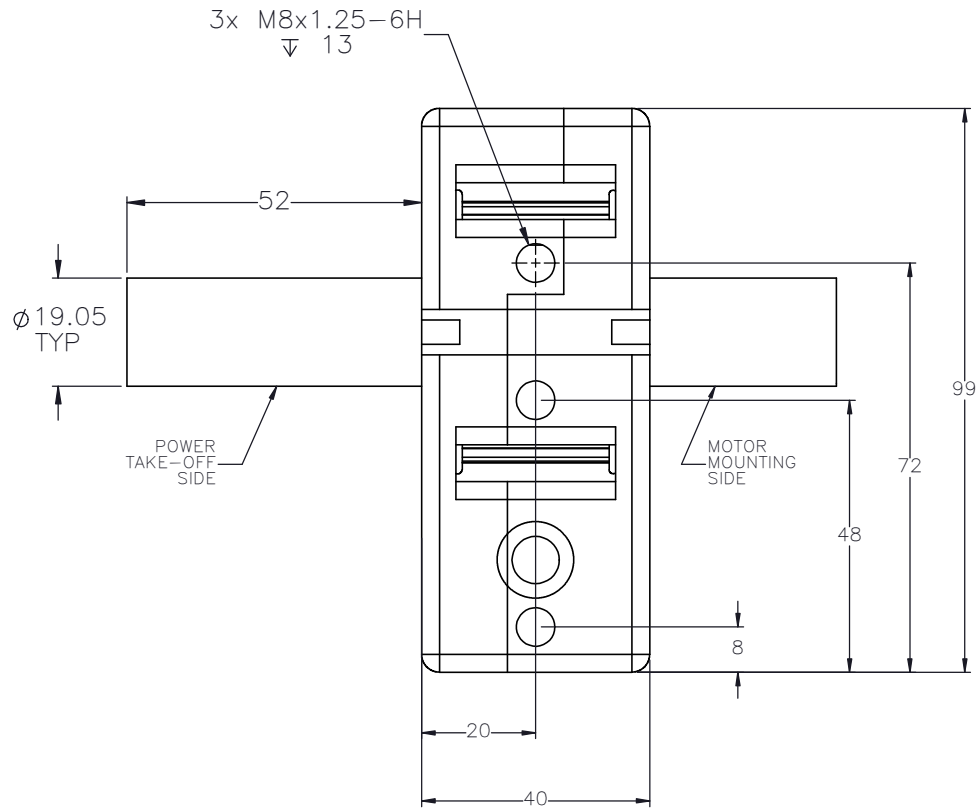
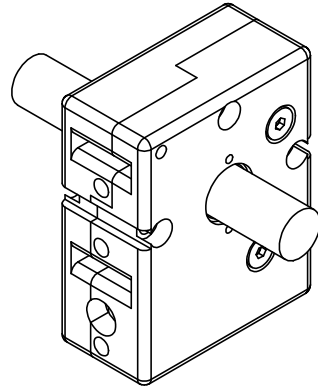
APPROVED: _____

DATE: _____

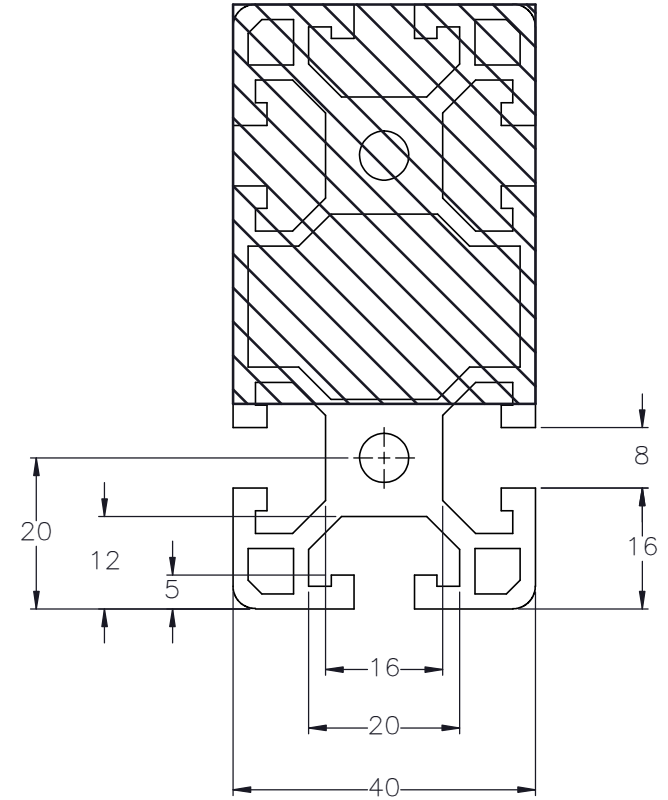
| | | | |
|--|--|---------------------------------------|-----------------------------|
| | DRAWN BY: PHW DATE: 11/26/2017 CHECKED BY: -- DATE: DD/MM/YYYY LAST SAVED BY: Tim DATE: 8/3/2020 | MATERIAL: | TITLE: |
| | UNLESS OTHERWISE SPECIFIED: DIMENSIONS ARE IN INCHES: TOLERANCES UNLESS NOTED: .XX ± .03 .XX ± .010 .XXX ± .005 OTHERWISE: ANG ± 0°30' | FINISH: | MACRON 6 DUAL CART ACTUATOR |
| | SURFACE FINISH: <input checked="" type="checkbox"/> THIRD ANGLE PROJECTION BREAK ALL SHARP EDGES DIMENSIONAL LIMITS APPLY AFTER FINISHING | SHEET: 1 OF 6 PART NUMBER: MDC-M6S | SCALE: 1:1 SHEET SIZE: C |

SPECIFICATIONS ARE SUBJECT TO CHANGE WITHOUT NOTICE

DOUBLE SHAFTED PULLEY



CUSTOMER ACCESSIBLE MOUNTING FEATURES, T-NUT SLOTS



MACRON DYNAMICS INC

| | | |
|--|------------------|-----------|
| DRAWN BY: PHW | DATE: 11/26/2017 | MATERIAL: |
| CHECKED BY: -- | DATE: DD/MM/YYYY | |
| LAST SAVED BY: Tim | DATE: 8/3/2020 | |
| UNLESS OTHERWISE SPECIFIED, DIMENSIONS ARE IN INCHES. TOLERANCES UNLESS NOTED OTHERWISE: | | FINISH: |
| .X ± .03 | | |
| .XX ± .010 | | |
| .XXX ± .005 | | |
| ANG ± 0°30' | | |

TITLE: MACRON 6 DUAL CART ACTUATOR

THIS DRAWING IS THE PROPERTY OF MACRON DYNAMICS. ANY REPRODUCTIONS SHALL BE FOR QUOTATION, MANUFACTURING OR PURCHASING PURPOSES ONLY. RELEASE OF DRAWINGS TO OTHER CONCERNS DOES NOT CONSTITUTE LICENSING IN ANY WAY. INFORMATION CONTAINED HEREIN IS PROPRIETARY AND CONFIDENTIAL.

SURFACE FINISH ✓
BREAK ALL SHARP EDGES
DIMENSIONAL LIMITS APPLY AFTER FINISHING
THIRD ANGLE PROJECTION

SHEET 2 OF 6

PART NUMBER MDC-M6S
SCALE 1:1
SHEET SIZE C
REV

SPECIFICATIONS ARE SUBJECT TO CHANGE WITHOUT NOTICE