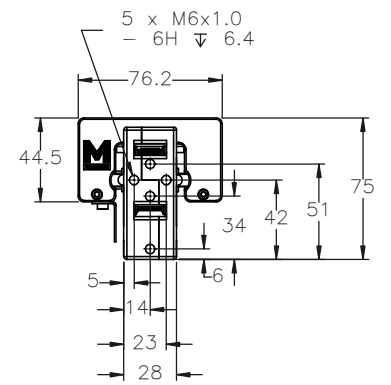
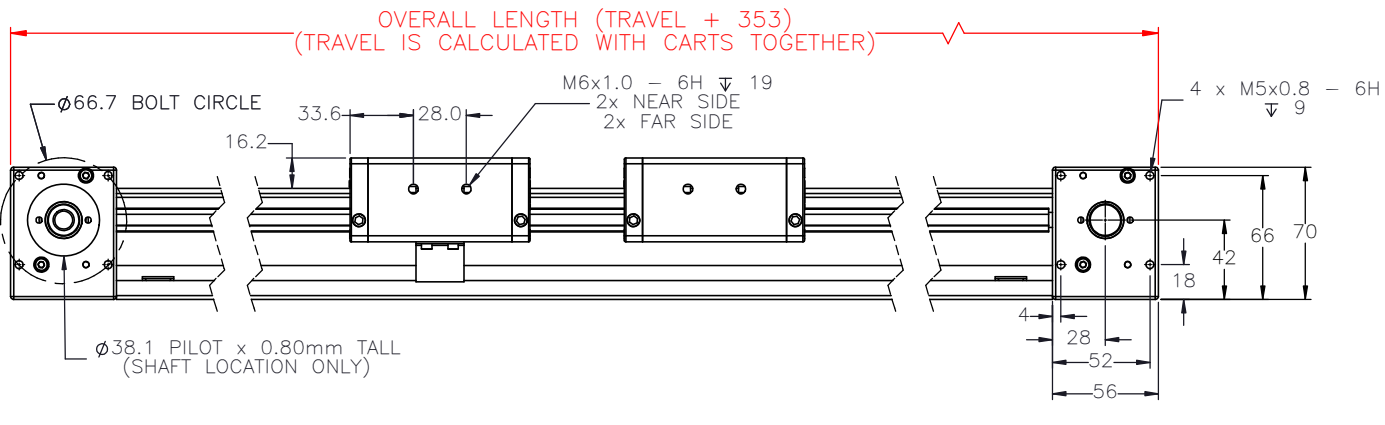
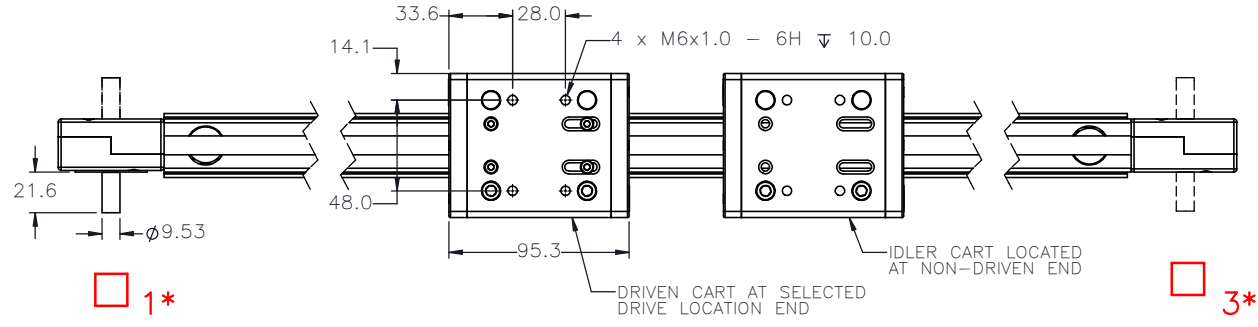
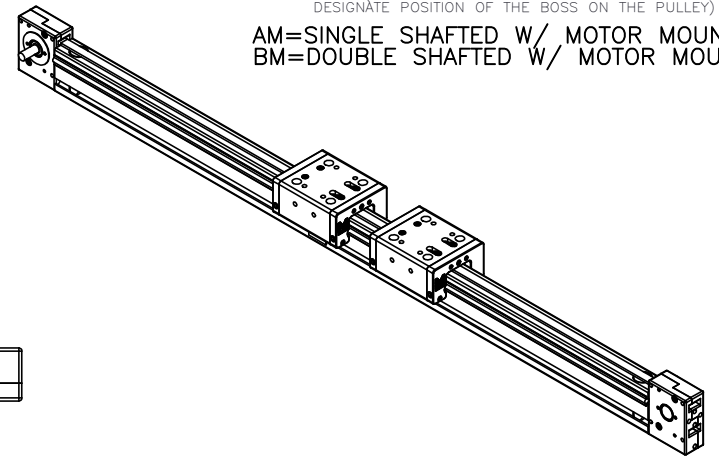


# MDC-628-B-AB- -

|                       |   |
|-----------------------|---|
| PULLEY PITCH DIAMETER | 33.42mm (1.316")  |
| PULLEY WIDTH          | 16.3mm (.642")  |
| PULLEY MATERIAL       | STEEL   |
| BELT WEIGHT (kg)      | $((\text{TRAVEL IN METERS} \times 2) + .69) \times .04$ |
| TRAVEL PER REV.       | 105mm   |
| TRAVEL MIN.           | 150mm   |
| TRAVEL MAX.           | 5850mm  |
| CART WEIGHT (kg)      | 0.54 PER CART   |
| SYSTEM WEIGHT (kg)    | $(\text{TRAVEL IN METERS} \times 1.7) + 2.2$            |

ENTER TRAVEL IN INCREMENTS OF 25mm  
 SELECT DRIVE SHAFT LOCATION\*  
 SHAFING TYPE  
 A0= SINGLE SHAFTED  
 B0= DOUBLE SHAFTED  
 NOTE: (IF "B" IS USED THE NUMBER WILL DESIGNATE POSITION OF THE BOSS ON THE PULLEY)  
 AM= SINGLE SHAFTED W/ MOTOR MOUNT  
 BM= DOUBLE SHAFTED W/ MOTOR MOUNT

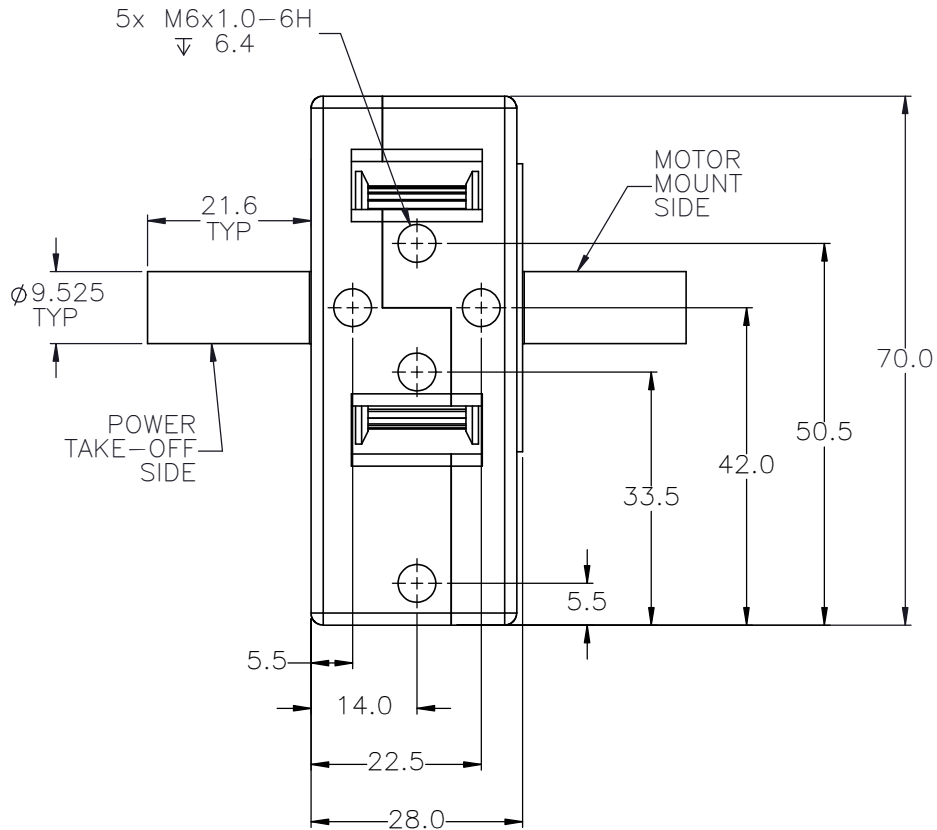
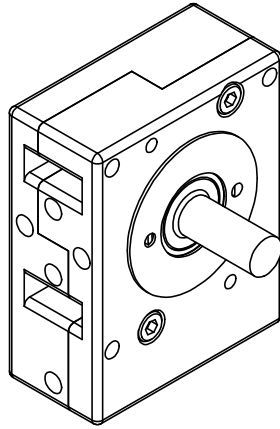


APPROVED: \_\_\_\_\_  
 DATE: \_\_\_\_\_

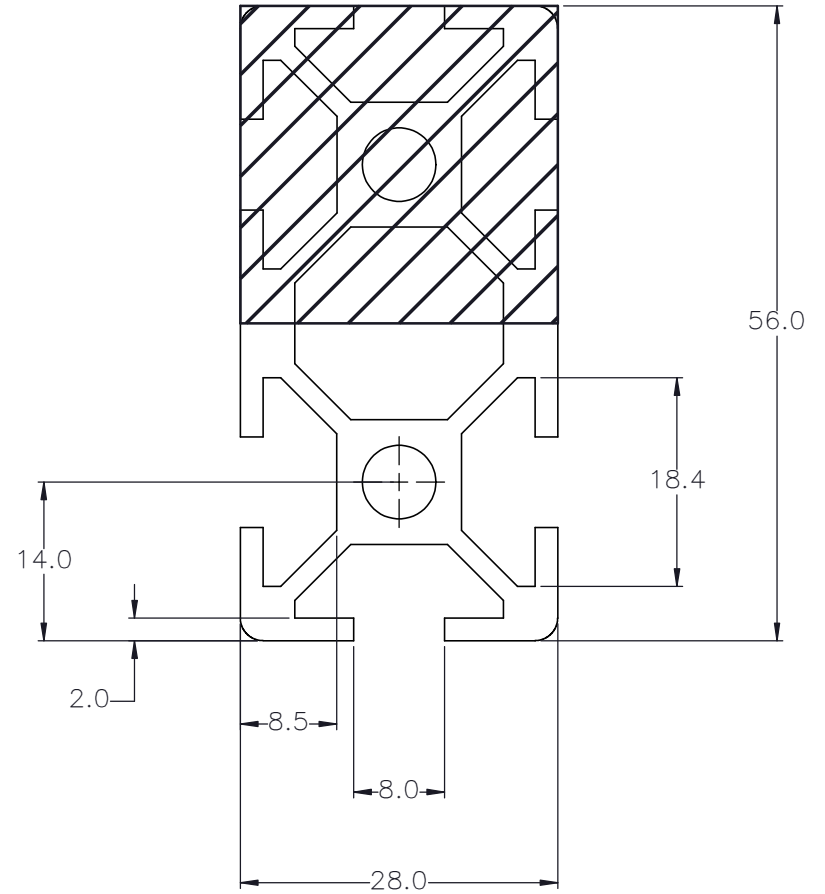
|  |  |  |
|--|--|--|
| <br><b>MACRON DYNAMICS INC</b>   | DRAWN BY: PHW    DATE: 11/26/2017    MATERIAL:   | TITLE:<br><b>MACRON MINI 6-28 DUAL CART ACTUATOR</b> |
|  | CHECKED BY: --    DATE: DD/MM/YYYY   |  |
|  | LAST SAVED BY: Tim    DATE: 7/31/2020  |  |
|  | UNLESS OTHERWISE SPECIFIED:<br>DIMENSIONS ARE IN INCHES:<br>TOLERANCES UNLESS NOTED:<br>.XX ± .010<br>.XXX ± .005<br>ANG ± 0°30' |  |
| SURFACE FINISH <input checked="" type="checkbox"/>   | FINISH:  | SCALE: 1:1    SHEET SIZE: C                          |
| BREAK ALL SHARP EDGES<br>DIMENSIONAL LIMITS APPLY AFTER FINISHING<br><b>THIRD ANGLE PROJECTION</b> | SHEET: 1 OF 2    PART NUMBER: MDC-628  | REV: C   |

SPECIFICATIONS ARE SUBJECT TO CHANGE WITHOUT NOTICE

# DOUBLE SHAFTED PULLEY



# CUSTOMER ACCESSIBLE MOUNTING FEATURES, T-NUT SLOTS



|   |                  |           |
|---|------------------|-----------|
| DRAWN BY: PHW   | DATE: 11/26/2017 | MATERIAL: |
| CHECKED BY: --  | DATE: DD/MM/YYYY |           |
| LAST SAVED BY: Tim  | DATE: 7/31/2020  |           |
| UNLESS OTHERWISE SPECIFIED,<br>DIMENSIONS ARE IN INCHES.<br>TOLERANCES UNLESS NOTED<br>OTHERWISE: |                  | FINISH:   |
| .X ± .03  | .XX ± .010       |           |
| .XXX ± .005   | ANG ± 0°30'      |           |

TITLE:  
MACRON PULLEY  
ASSEMBLY 28-12,  
DOUBLE SHAFTED

THIS DRAWING IS THE PROPERTY OF MACRON DYNAMICS  
ANY REPRODUCTIONS SHALL BE FOR QUOTATION,  
MANUFACTURING OR PURCHASING PURPOSES ONLY.  
RELEASE OF DRAWINGS TO OTHER CONCERNS DOES NOT  
CONSTITUTE LICENSING IN ANY WAY. INFORMATION  
CONTAINED HEREIN IS PROPRIETARY AND CONFIDENTIAL

SURFACE FINISH ✓  
BREAK ALL SHARP EDGES  
DIMENSIONAL LIMITS APPLY AFTER FINISHING  
THIRD ANGLE PROJECTION

SHEET  
2 OF 2

PART NUMBER  
MDC-628

SCALE 1:1 SHEET SIZE C

SPECIFICATIONS ARE SUBJECT  
TO CHANGE WITHOUT NOTICE