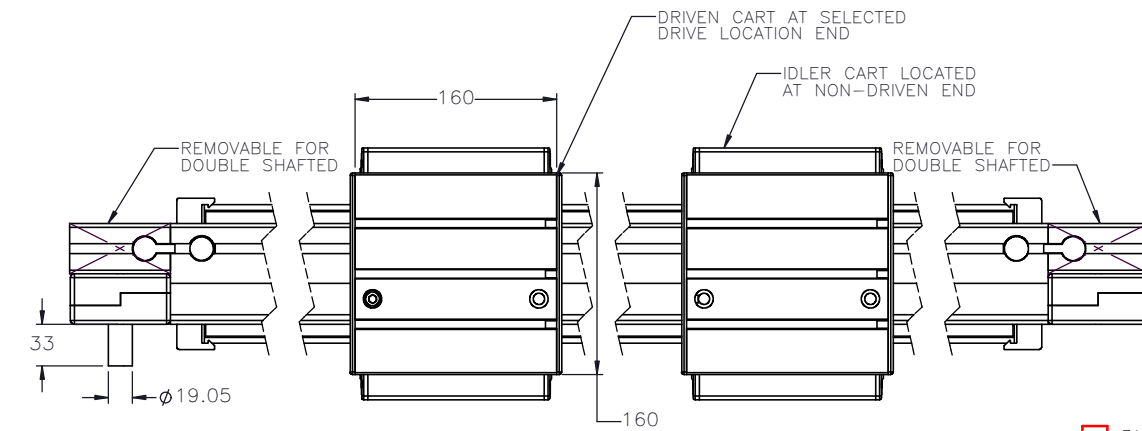
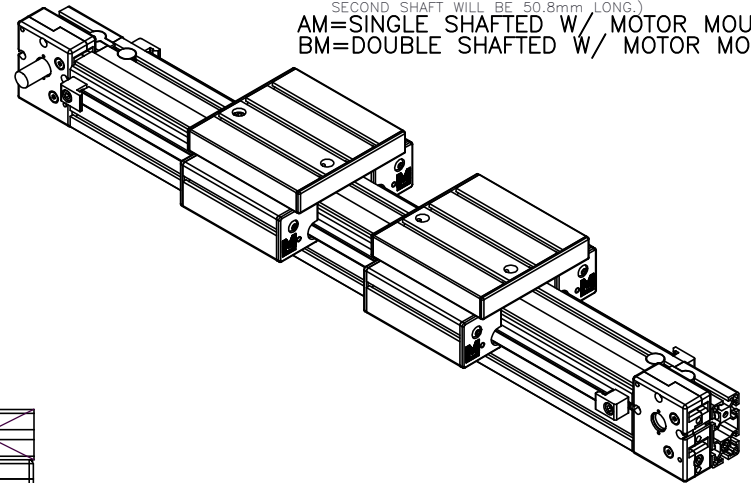


MDC-14S-G-BC- -

PULLEY PITCH DIAMETER	47.75mm (1.880")
PULLEY WIDTH	28.9mm (1.138")
PULLEY MATERIAL	STEEL
BELT WEIGHT (kg)	$((\text{TRAVEL IN METERS} \times 2) + 1.16) \times .12$
TRAVEL PER REV.	150mm
TRAVEL MIN.	150mm
TRAVEL MAX.	5725mm
CART WEIGHT (kg)	3.54 PER CART
SYSTEM WEIGHT (kg)	$(\text{TRAVEL IN METERS} \times 6.1) + 12.4$

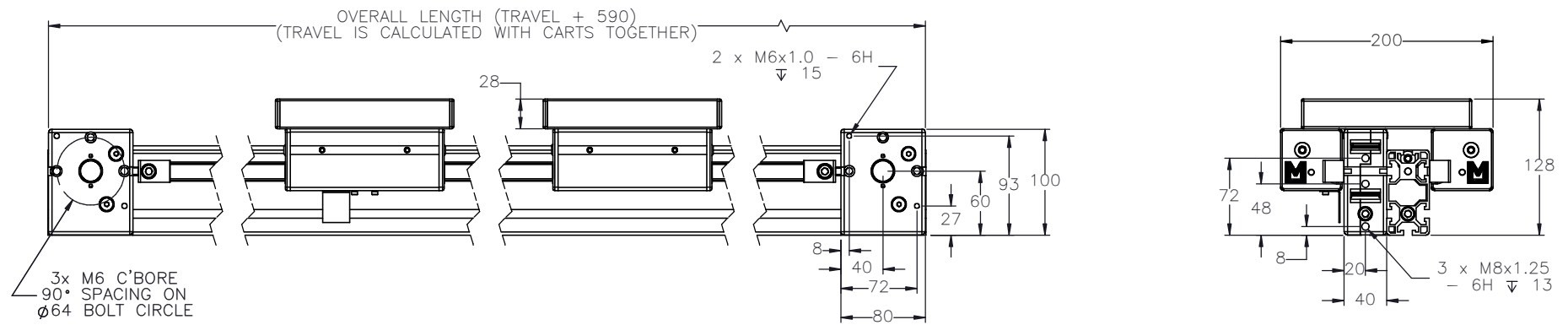
ENTER
TRAVEL IN INCREMENTS OF 25mm
SELECT
DRIVE SHAFT LOCATION*

SHAFTING TYPE
AO= SINGLE SHAFTED
BO= DOUBLE SHAFTED
NOTE: (IF "B" IS USED THE NUMBER WILL DESIGNATE POSITION OF SHORT SHAFT. SECOND SHAFT WILL BE 50.8mm LONG.)
AM= SINGLE SHAFTED W/ MOTOR MOUNT
BM= DOUBLE SHAFTED W/ MOTOR MOUNT




1*

3*

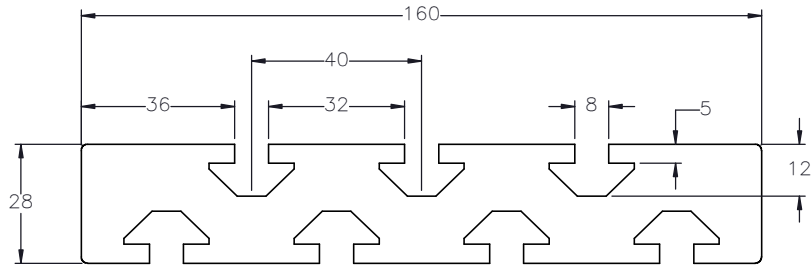


APPROVED: _____

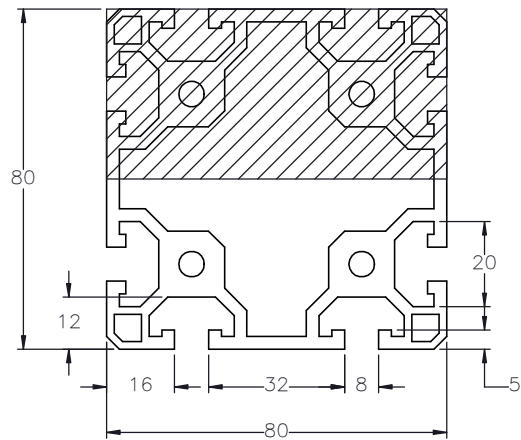
DATE: _____

 MACRON DYNAMICS INC	DRAWN BY: PHW DATE: 11/26/2017 CHECKED BY: --- DATE: DD/MM/YYYY LAST SAVED BY: Tim DATE: 7/31/2020	MATERIAL:	TITLE: MACRON 14S ACTUATOR	
	UNLESS OTHERWISE SPECIFIED: DIMENSIONS ARE IN INCHES: TOLERANCES UNLESS NOTED: OTHERWISE:	.X ± .03 .XX ± .010 .XXX ± .005 ANG ± 0°30'	FINISH:	SCALE: 1:1 SHEET SIZE: C
	SURFACE FINISH: <input checked="" type="checkbox"/> THIRD ANGLE PROJECTION	BREAK ALL SHARP EDGES DIMENSIONAL LIMITS APPLY AFTER FINISHING	SHEET: 1 OF 2	PART NUMBER: MDC-14S
	SPECIFICATIONS ARE SUBJECT TO CHANGE WITHOUT NOTICE			

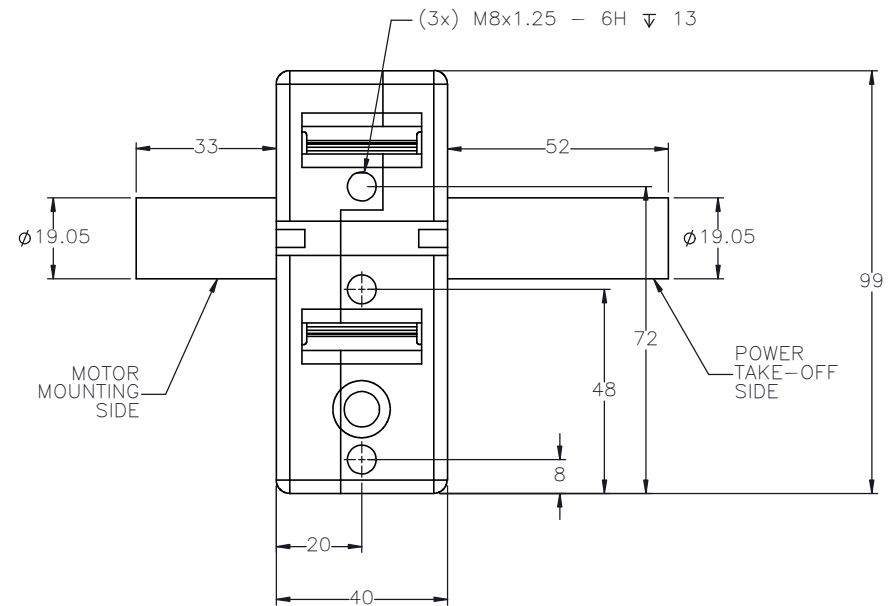
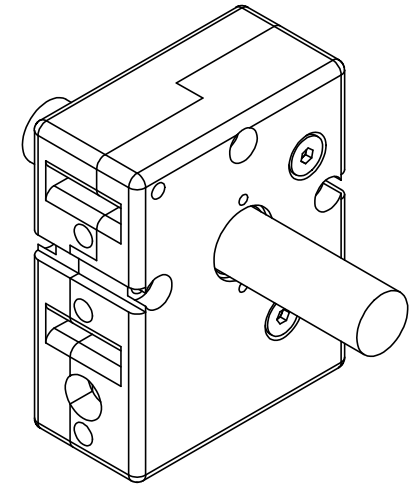
CART MOUNTING FEATURES T-NUT SLOTS



ACTUATOR BODY MOUNTING FEATURES T-NUT SLOTS



DOUBLE SHAFTED PULLEY



MACRON DYNAMICS INC

THIS DRAWING IS THE PROPERTY OF MACRON DYNAMICS. ANY REPRODUCTIONS SHALL BE FOR QUOTATION, MANUFACTURING OR PURCHASING PURPOSES ONLY. RELEASE OF DRAWINGS TO OTHER CONCERNS DOES NOT CONSTITUTE LICENSING IN ANY WAY. INFORMATION CONTAINED HEREIN IS PROPRIETARY AND CONFIDENTIAL.

SPECIFICATIONS ARE SUBJECT TO CHANGE WITHOUT NOTICE

DRAWN BY: PHW DATE: 11/26/2017
 CHECKED BY: -- DATE: DD/MM/YYYY
 LAST SAVED BY: Tim DATE: 7/31/2020

UNLESS OTHERWISE SPECIFIED, DIMENSIONS ARE IN INCHES. TOLERANCES UNLESS NOTED OTHERWISE:
 .X ± .03
 .XX ± .010
 .XXX ± .005
 ANG ± 0°30'

SURFACE FINISH: BREAK ALL SHARP EDGES
 DIMENSIONAL LIMITS APPLY AFTER FINISHING
THIRD ANGLE PROJECTION

MATERIAL: 80x80 STANDARD EXTRUSION (M10088S)
 FINISH: N/A

SHEET: 2 OF 2
 PART NUMBER: M10088S-1000, MSA-14S

TITLE: 80x80 STANDARD EXTRUSION
 SCALE: 1:1 SHEET SIZE: C

REV