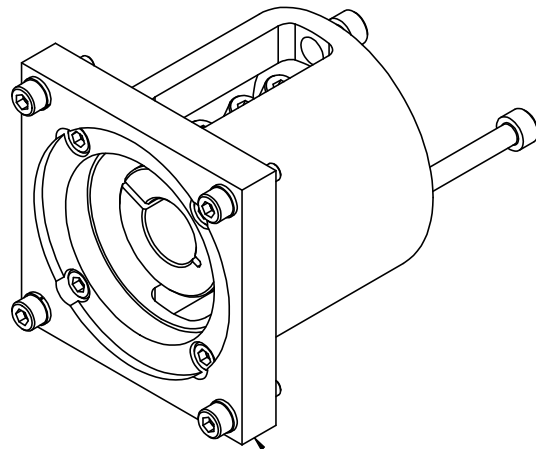
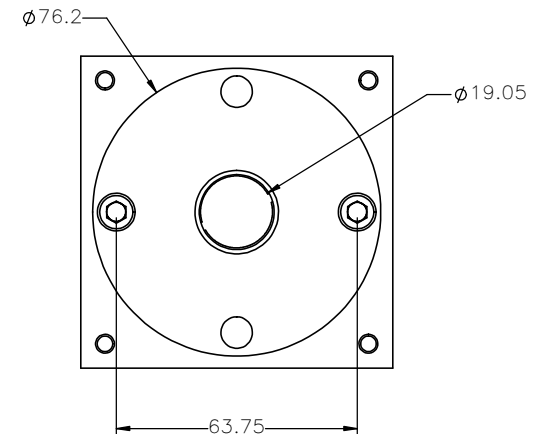
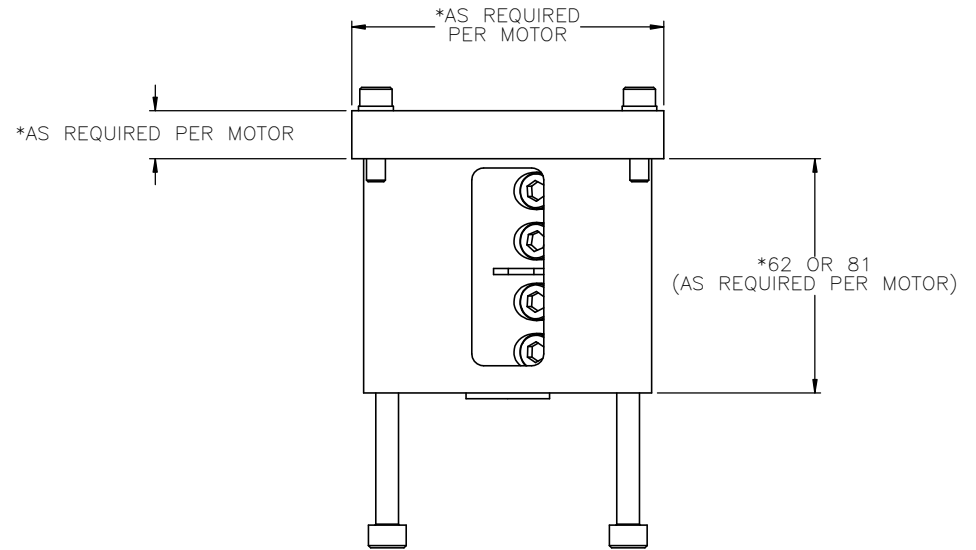


MMK-40

MOTOR MOUNTING KIT – SIZE 40




*MOTOR PLATE AND COUPLING
WILL VARY BASED ON MOTOR



NOTES:

- 1.) MOTOR **MANUFACTURER AND MODEL NUMBER** REQUIRED TO PROPERLY SIZE THE MOTOR ADAPTOR PLATE. MAXIMUM MOTOR INPUT SHAFT DIAMETER IS 22mm.
- 2.) ADAPTOR PLATE SIZE WILL VARY BASED ON MOTOR SPECIFIED. OVERALL DIMENSIONS AND PLATE THICKNESS WILL BE DIFFERENT FROM VISUAL REPRESENTATION ABOVE
- 3.) MOTOR FLANGE BOLT CIRCLE PATTERN AND HOLE DIAMETER ALONG WITH MOTOR SHAFT DIAMETER AND LENGTH WILL DETERMINE THE FINAL SIZE OF THE ADAPTOR PLATE
- 4.) MACRON DYNAMICS, INC. MAKES EVERY EFFORT TO MATCH MOTOR DIMENSIONS TO MOTOR MANUFACTURER'S SPECIFICATIONS. THESE MANUFACTURER'S SPECIFICATIONS CAN CHANGE FROM TIME TO TIME WITHOUT NOTICE. MACRON IS NOT RESPONSIBLE FOR ADAPTOR THAT DO NOT MATE WITH THE MOTORS IF REFERENCE DIMENSIONS HAVE CHANGED OR IF THE USER CHANGES MOTOR MODELS AFTER PURCHASE

REVISION HISTORY			
REV.	DESCRIPTION	DATE	REVISED BY:

INPUT TORQUE – Nm (lb-in)		NA	
MAX INPUT SHAFT DIA		22mm	
RELATED ACTUATORS		MSA-SB2, MSA-M6S, MSA-R6S, MSA-135, MSA-14S, MSA-R20, MDS-R20, MSA-BT2, MRA-RTU-1	
 MACRON DYNAMICS INC	DRAWN BY: TH	DATE: 9/18/2018	MATERIAL:
	CHECKED BY: --	DATE: DD/MM/YYYY	
	LAST SAVED BY: TH	DATE: 10/4/2023	FINISH:
	UNLESS OTHERWISE SPECIFIED, .XX ± .762 DIMENSIONS ARE IN MILLIMETERS. .XX ± .254 TOLERANCES, UNLESS NOTED .XXX ± .127 OTHERWISE: ANG ± 0°30'		
SURFACE FINISH		B	
BREAK ALL SHARP EDGES		SHEET	
DIMENSIONAL LIMITS APPLY AFTER FINISHING		PART NUMBER	
THIRD ANGLE PROJECTION		1 OF 1	
		MMK-40	