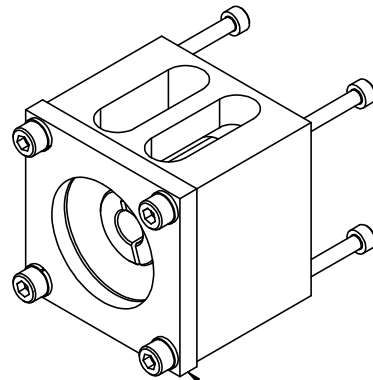
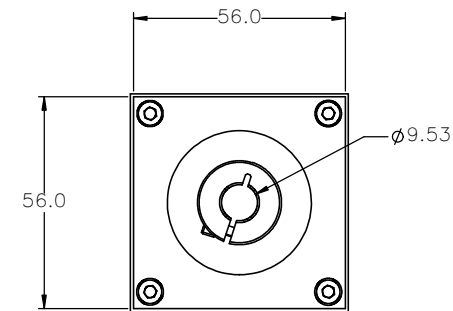
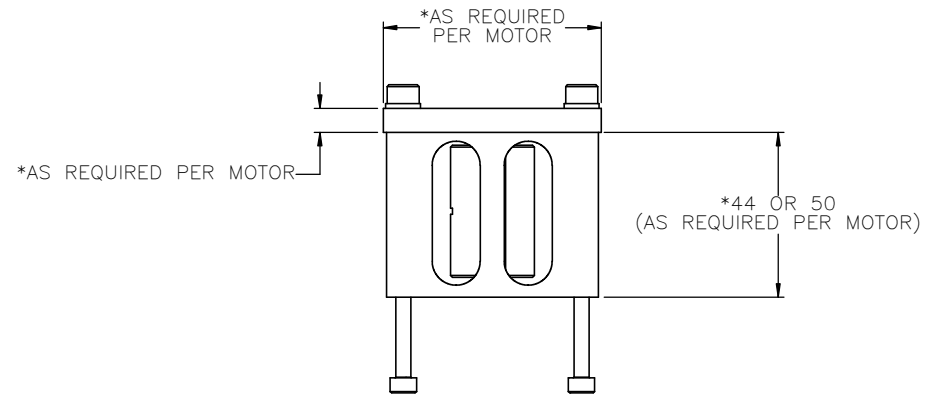


MMK-28

MOTOR MOUNTING KIT – SIZE 28




*MOTOR PLATE AND COUPLING
WILL VARY BASED ON MOTOR



NOTES:

- 1.) MOTOR **MANUFACTURER AND MODEL NUMBER** REQUIRED TO PROPERLY SIZE THE MOTOR ADAPTOR PLATE. MAXIMUM MOTOR INPUT SHAFT DIAMETER IS 14mm.
- 2.) ADAPTOR PLATE SIZE WILL VARY BASED ON MOTOR SPECIFIED. OVERALL DIMENSIONS AND PLATE THICKNESS WILL BE DIFFERENT FROM VISUAL REPRESENTATION ABOVE
- 3.) MOTOR FLANGE BOLT CIRCLE PATTERN AND HOLE DIAMETER ALONG WITH MOTOR SHAFT DIAMETER AND LENGTH WILL DETERMINE THE FINAL SIZE OF THE ADAPTOR PLATE
- 4.) MACRON DYNAMICS, INC. MAKES EVERY EFFORT TO MATCH MOTOR DIMENSIONS TO MOTOR MANUFACTURER'S SPECIFICATIONS. THESE MANUFACTURER'S SPECIFICATIONS CAN CHANGE FROM TIME TO TIME WITHOUT NOTICE. MACRON IS NOT RESPONSIBLE FOR ADAPTORS THAT DO NOT MATE WITH THE MOTORS IF REFERENCE DIMENSIONS HAVE CHANGED OR IF THE USER CHANGES MOTOR MODELS AFTER PURCHASE

INPUT TORQUE – Nm (lb-in)			NA		
MAX INPUT SHAFT DIA			14mm		
RELATED ACTUATORS			MSA-SB1, MSA-PSC, MSA-NBC, MSA-628, MSA-R15, MSA-BT1		
<div> MACRON DYNAMICS INC</div>	DRAWN BY: TH	DATE: 9/18/2018	MATERIAL:		TITLE: MOTOR MOUNT KIT
	CHECKED BY: —	DATE: DD/MM/YYYY			
	LAST SAVED BY: TH	DATE: 10/4/2023	FINISH:		
	UNLESS OTHERWISE SPECIFIED, DIMENSIONS ARE IN MILLIMETERS. TOLERANCES, UNLESS NOTED OTHERWISE: .XX ± .762 .XX ± .254 .XXX ± .127 ANG ± 0°30'				
	SURFACE FINISH <input checked="" type="checkbox"/>				
THIS DRAWING IS THE PROPERTY OF MACRON DYNAMICS. ANY REPRODUCTIONS SHALL BE FOR QUOTATION, MANUFACTURING, OR PURCHASING PURPOSES ONLY. RELEASE OF DRAWINGS TO OTHER CONCERNS DOES NOT CONSTITUTE LICENSING IN ANY WAY. INFORMATION CONTAINED HEREIN IS PROPRIETARY AND CONFIDENTIAL			SHEET		PART NUMBER
			1 OF 1		MMK-28