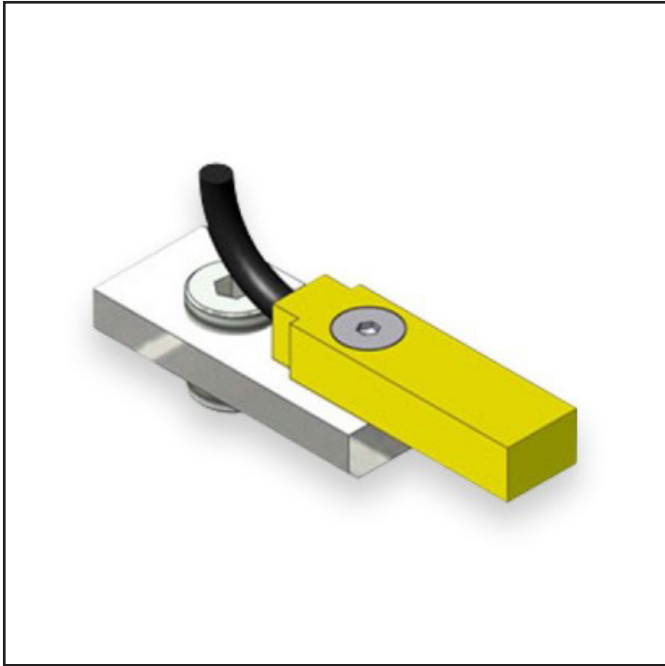




ACCESSORIES > T-SLOT SENSOR KITS

# T-SLOT SENSOR KITS



## T-SLOT SENSOR OPTIONS

### TRANSISTOR LOGIC

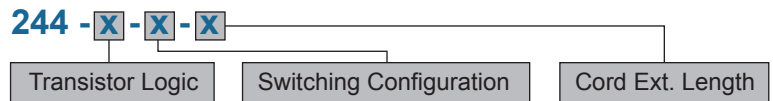
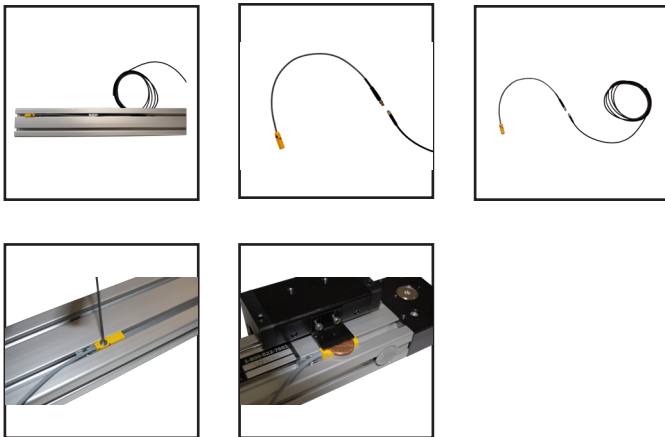
- PNP
- NPN

### SWITCHING CONFIGURATION

- Normally Open
- Normally Closed

### CORD EXTENTION LENGTH

- 2m
- 6m
- 12m
- None



### Macron Solutions Since 1987

MACRON DYNAMICS, INC.  
 100 Phyllis Drive  
 Croydon, PA 19021

1-800-MACRON-1 (1-800-622-7661)  
 Phone: 267-557-3590  
 Fax: 215-443-0981

© 2014 MACRON DYNAMICS, INC.

### Macron Guarantee

All Macron actuators and belt drives are covered by our  
 1-Year Warranty



# T-SLOT SENSOR KITS

## SPECIFICATIONS

Sensor Type	<b>Inductive</b>
Cord Length	<b>2 Meters</b>
Switching Configuration	<b>NC or NO</b>
Transistor Logic	<b>NPN or PNP Sensor</b>
Sensor Size	<b>Fits all 8mm wide T-Slots</b>
Operating Voltage	<b>10-30 VDC Voltage</b>
Voltage Drop Across Conducting Sensor	<b>=1.8 V at 100 mA</b>
Number of Conductors (AWG)	<b>3x26 AWG</b>
Temperature Range	<b>-40°C to 105°C</b>
Contact Carrier Material / Color	<b>Nylon or PUR / BLK</b>
Contact Material / Plating	<b>Brass / Gold</b>
Outer Cable Jacket Material / Color	<b>PVC / Grey</b>
Conductor Insulation Material	<b>PVC</b>
Coupling Nut Material / Plating	<b>Brass / Nickel</b>

## FEATURES

Macron T-Slot Sensor Kits install easily in all Macron actuators, belt drives, screw actuators, and MacFRAME aluminum beams. Using T-nut capture and adjustability our inductive proximity sensors fit perfectly into the actuator beam T-slot and provide a low profile mounting. The cables can be routed through the T-slot producing a clean system.

T-slot sensors are 24VDC and available in PNP and NPN output transistor logic with NO (normally open) or NC (normally closed) configuration. Sensors and mating cordsets meet NEMA 1, 3, 4, 6P and IEC IP67 ratings. Macron T-slot Sensors can provide users with limit, position or output signaling back to a control system.

Each T-Slot Sensor Kit Includes:

- Sensor
- Cord Set
- T-Nut w/Set Screws (Long and Short)
- Mounting Screw (M3x10 FHCS)
- Tech Data Sheet and Installation Guide
- Cord-Set Extension (if specified)

### Macron Solutions Since 1987

MACRON DYNAMICS, INC.  
100 Phyllis Drive  
Croydon, PA 19021

1-800-MACRON-1 (1-800-622-7661)  
Phone: 267-557-3590  
Fax: 215-443-0981

© 2014 MACRON DYNAMICS, INC.

### Macron Guarantee

All Macron actuators and belt drives are covered by our  
1-Year Warranty