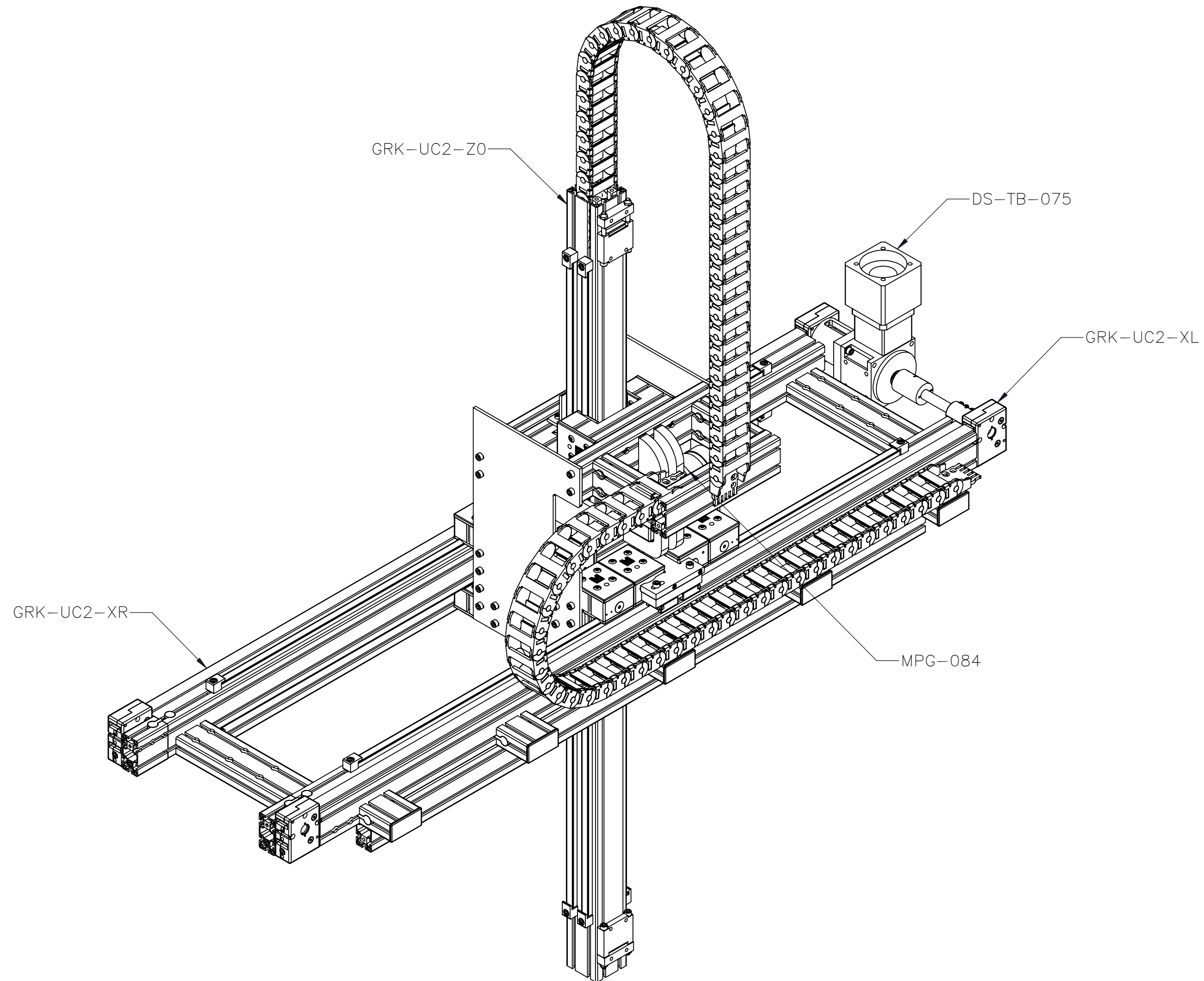



MGS-UC2--X-

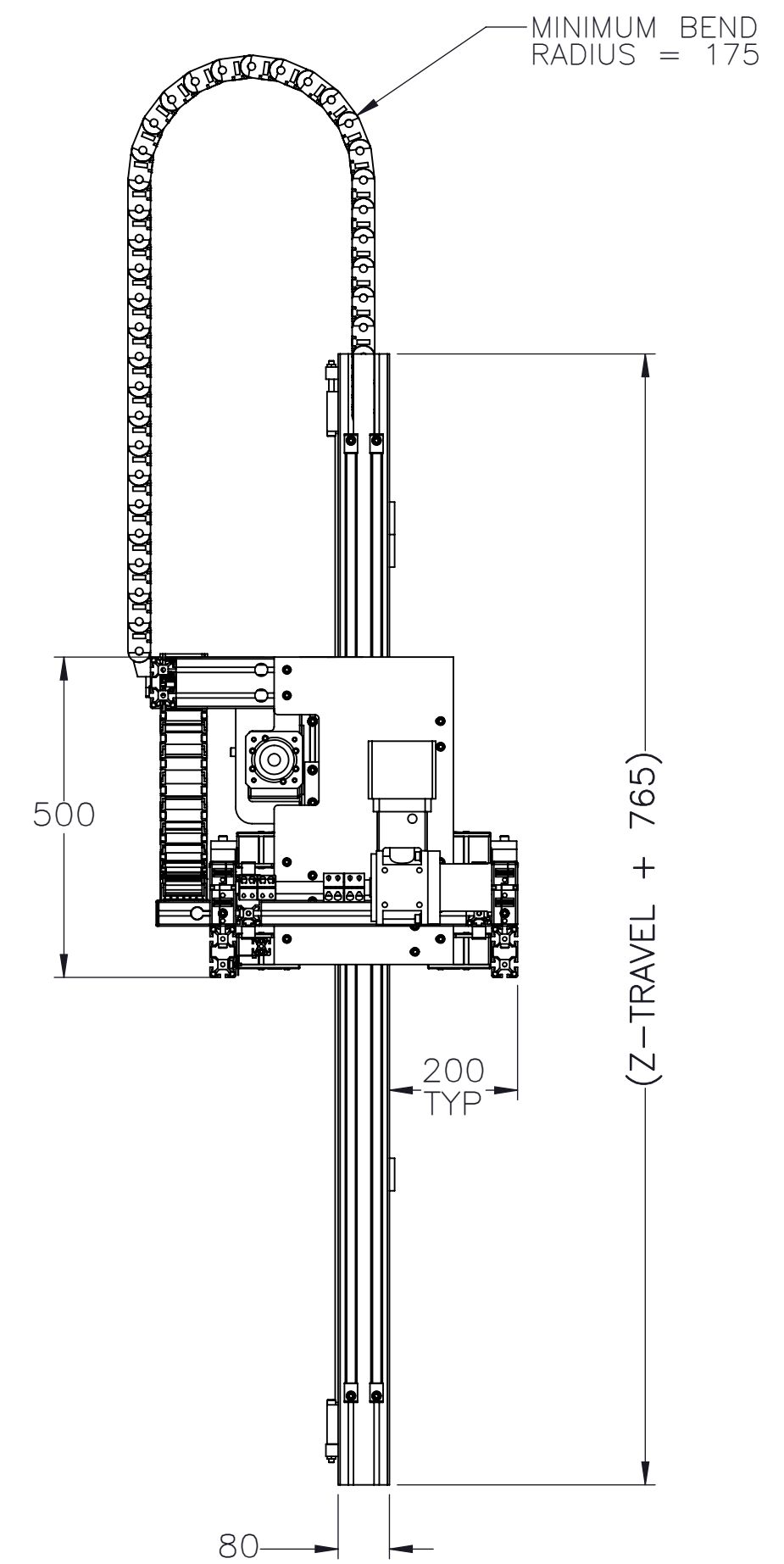
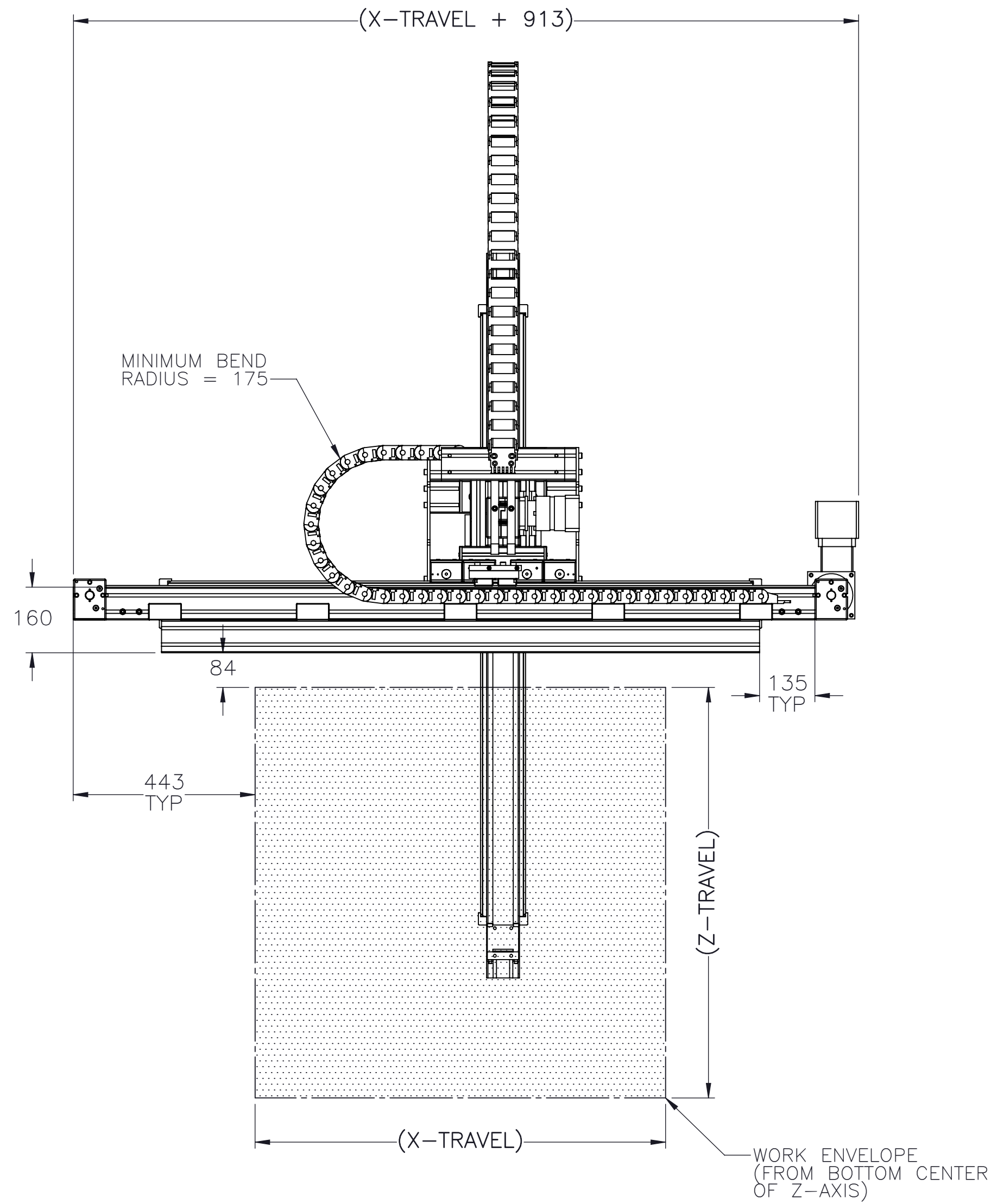
ENTER Z-AXIS TRAVEL
 TRAVEL IN INCREMENTS OF 250mm
 TRAVEL LIMITS: 250mm-1000mm

ENTER X-AXIS TRAVEL
 TRAVEL IN INCREMENTS OF 500mm
 TRAVEL LIMITS: 1000mm-5250mm




 MACRON DYNAMICS INC	DRAWN BY: JB DATE: 2/10/2016	MATERIAL:	TITLE: MACRON UC2 XZ GANTRY
	CHECKED BY: -- DATE: 2/11/2016	FINISH:	
	LAST SAVED BY: Blutinger DATE: 2/16/2016		
	<small>UNLESS OTHERWISE SPECIFIED, DIMENSIONS ARE IN MILLIMETERS. TOLERANCES UNLESS NOTED OTHERWISE:</small>	<small>.X ± .762 .XX ± .254 .XXX ± .127 ANG ± 0°30'</small>	
<small>THIS DRAWING IS THE PROPERTY OF MACRON DYNAMICS. ANY REPRODUCTIONS SHALL BE FOR QUOTATION, MANUFACTURING, OR PURCHASING PURPOSES ONLY. RELEASE OF DRAWINGS TO OTHER CONCERNS DOES NOT CONSTITUTE LICENSING IN ANY WAY. INFORMATION CONTAINED HEREIN IS PROPRIETARY AND CONFIDENTIAL</small>	SURFACE FINISH \checkmark	SCALE 1:1 SHEET SIZE C	SHEET 1 OF 4 PART NUMBER MGS-UC2-X-X-X REV 00
<small>BREAK ALL SHARP EDGES DIMENSIONAL LIMITS APPLY AFTER FINISHING</small> THIRD ANGLE PROJECTION			

GANTRY FOOTPRINT



MOUNTING NOTES

X-TRAVELS (mm)	ACCEPTABLE PAYLOAD (lbs)	MOUNTING STYLE
1000	300	X-AXIS BEAMS CAN ONLY BE MOUNTED AT ENDS
1500	212	
2000	144	
2500	76	
3000	20	
3500 - 5250	300	X-AXIS BEAMS MUST BE SUPPORTED FOR WHOLE LENGTH



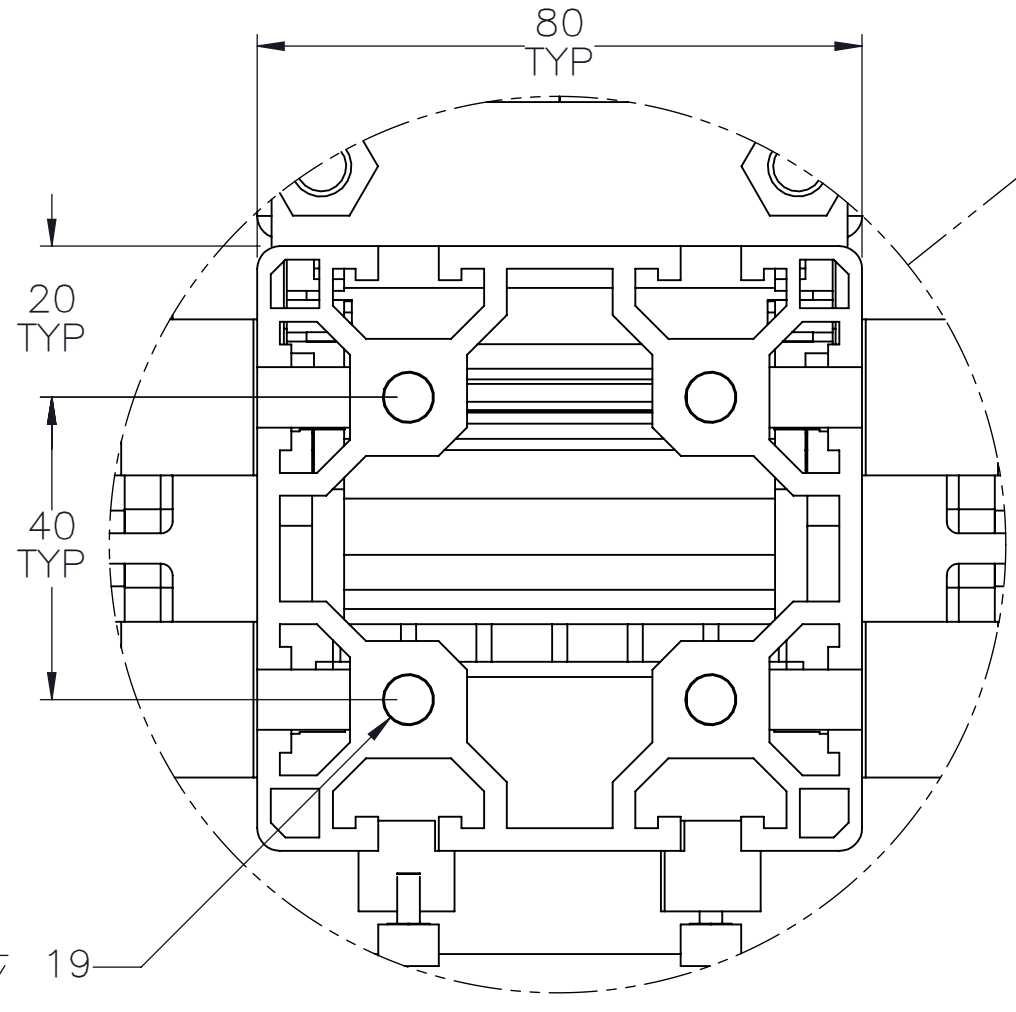
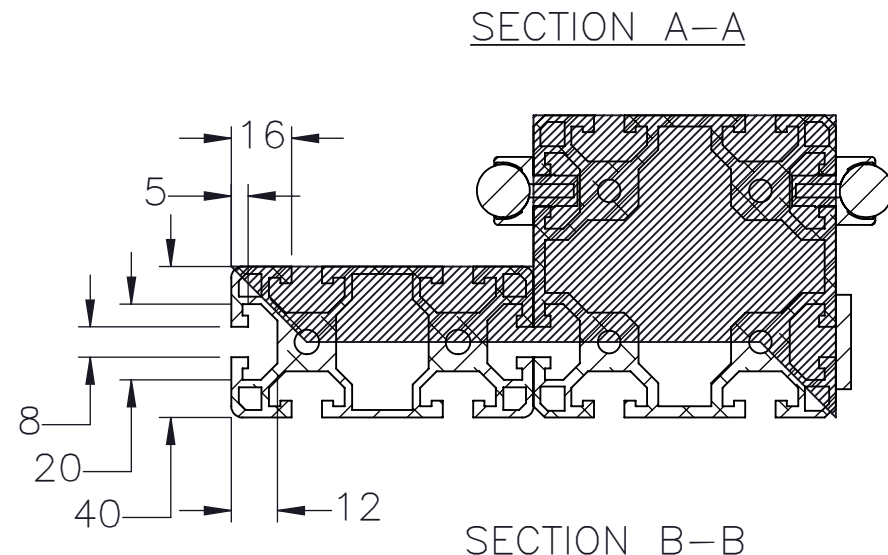
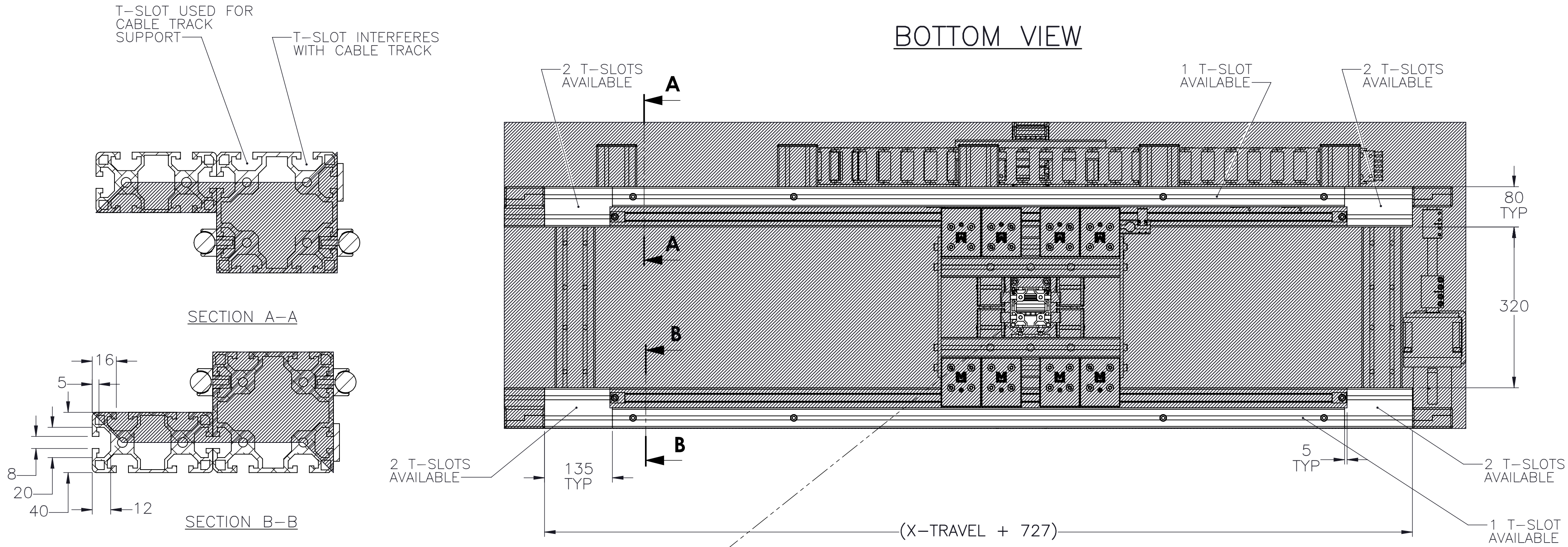
MACRON DYNAMICS INC

THIS DRAWING IS THE PROPERTY OF MACRON DYNAMICS. ANY REPRODUCTIONS SHALL BE FOR QUOTATION, MANUFACTURING, OR PURCHASING PURPOSES ONLY. RELEASE OF DRAWINGS TO OTHER CONCERNS DOES NOT CONSTITUTE LICENSING IN ANY WAY. INFORMATION CONTAINED HEREIN IS PROPRIETARY AND CONFIDENTIAL.

DRAWN BY: JB	DATE: 2/10/2016	MATERIAL:	TITLE: MACRON UC2 XZ GANTRY
CHECKED BY: --	DATE: 2/11/2016	FINISH:	
LAST SAVED BY: Blutinger	DATE: 2/16/2016		
UNLESS OTHERWISE SPECIFIED, DIMENSIONS ARE IN INCHES. TOLERANCES UNLESS NOTED OTHERWISE:			
SURFACE FINISH 63		SCALE 1:1 SHEET SIZE C	
BREAK ALL SHARP EDGES DIMENSIONAL LIMITS APPLY AFTER FINISHING		SHEET 2 OF 4	PART NUMBER MGS-UC2-X-X-X
THIRD ANGLE PROJECTION		REV 00	

GANTRY MOUNTING FEATURES

BOTTOM VIEW



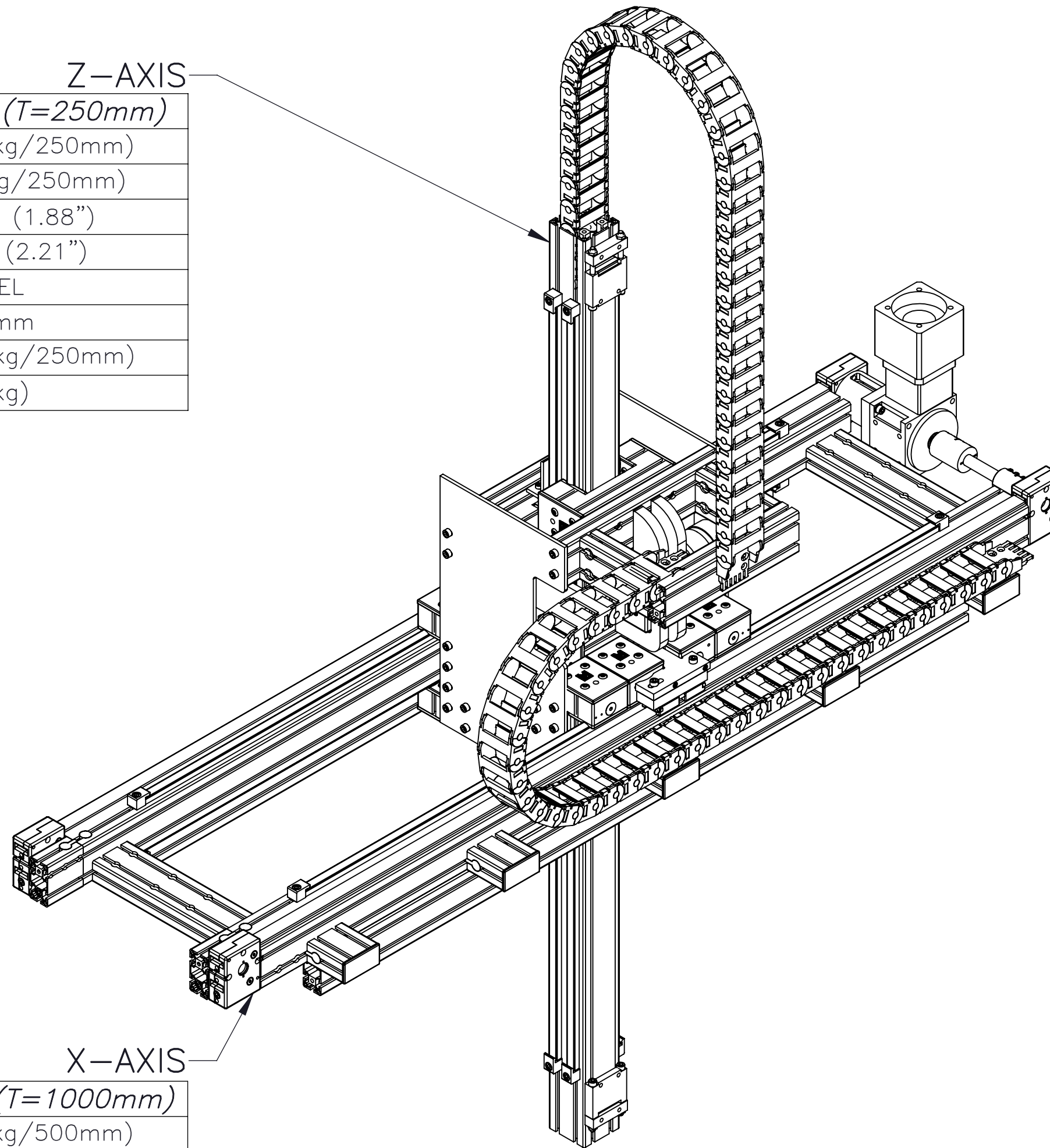
DETAIL C

	DRAWN BY: JB CHECKED BY: -- LAST SAVED BY: Blutinger	DATE: 2/10/2016 DATE: 2/11/2016 DATE: 2/16/2016	MATERIAL:	TITLE: MACRON UC2 XZ GANTRY	
	UNLESS OTHERWISE SPECIFIED, DIMENSIONS ARE IN INCHES. TOLERANCES UNLESS NOTED OTHERWISE:		FINISH:	SCALE: 1:1 SHEET SIZE: C	
	SURFACE FINISH: 63		SHEET: 3 OF 4	PART NUMBER: MGS-UC2-X-X-X	REV: 00
	THIS DRAWING IS THE PROPERTY OF MACRON DYNAMICS. ANY REPRODUCTIONS SHALL BE FOR QUOTATION, MANUFACTURING, OR PURCHASING PURPOSES ONLY. RELEASE OF DRAWINGS TO OTHER CONCERNS DOES NOT CONSTITUTE LICENSING IN ANY WAY. INFORMATION CONTAINED HEREIN IS PROPRIETARY AND CONFIDENTIAL.		BREAK ALL SHARP EDGES DIMENSIONAL LIMITS APPLY AFTER FINISHING THIRD ANGLE PROJECTION		

MOTOR SIZING INFORMATION

(INCREMENTAL ADDERS REFER TO MASS PER TRAVEL LENGTH)

PROPERTY	BASE VALUE (T=250mm)
MOVING MASS	11.2kg(+2.9kg/250mm)
BELT MASS	0.8kg(+0.3kg/250mm)
PULLEY PITCH ϕ	47.75mm (1.88")
PULLEY WIDTH	54.0mm (2.21")
PULLEY MATERIAL	STEEL
TRAVEL PER REV	150mm
*SYSTEM MASS	41.8kg(+3.3kg/250mm)
*INCLUDES MPG-084 (2.3kg)	




PROPERTY	BASE VALUE (T=1000mm)
**MOVING MASS	24.8kg(+0.5kg/500mm)
BELT MASS	2.3kg(+0.6kg/500mm)
PULLEY PITCH ϕ	47.75mm (1.88")
PULLEY WIDTH	28.9mm (1.14")
PULLEY MATERIAL	STEEL
CONN SHAFT LENGTH	133.35mm (5.25")
CONN SHAFT ϕ	19.05mm (.75")
CONN SHAFT MATERIAL	STEEL
TRAVEL PER REV	150mm
**ADD SYSTEM MASS OF Z-AXIS TO VALUE	

X-TRAVEL = _____ mm

Z-TRAVEL = _____ mm

Z-AXIS	MOVING MASS	$(Z-TRAVEL \times .0115) + 8.24 = \text{kg}$
	BELT MASS	$(Z-TRAVEL \times .0009) + 0.55 = \text{kg}$
	SYSTEM MASS {1}	$(Z-TRAVEL \times .0132) + 36.2 = \text{kg}$
X-AXIS	MOVING MASS	$(X-TRAVEL \times .0009) + 23.9 + \{1\} = \text{kg}$
	BELT MASS	$(X-TRAVEL \times .0012) + 1.05 = \text{kg}$

 MACRON DYNAMICS INC	DRAWN BY: JB	DATE: 2/10/2016	MATERIAL:	TITLE: MACRON UC2 XZ GANTRY		
	CHECKED BY: --	DATE: 2/11/2016	FINISH:			
	LAST SAVED BY: Blutinger	DATE: 2/16/2016				
	<small>UNLESS OTHERWISE SPECIFIED, DIMENSIONS ARE IN INCHES. TOLERANCES UNLESS NOTED OTHERWISE:</small>				<small>.X ± .762 .XX ± .254 .XXX ± .127 ANG ± 0°30'</small>	
<small>THIS DRAWING IS THE PROPERTY OF MACRON DYNAMICS. ANY REPRODUCTIONS SHALL BE FOR QUOTATION, MANUFACTURING, OR PURCHASING PURPOSES ONLY. RELEASE OF DRAWINGS TO OTHER CONCERNS DOES NOT CONSTITUTE LICENSING IN ANY WAY. INFORMATION CONTAINED HEREIN IS PROPRIETARY AND CONFIDENTIAL</small>			SURFACE FINISH 63	SCALE 1:1	SHEET SIZE C	
<small>BREAK ALL SHARP EDGES DIMENSIONAL LIMITS APPLY AFTER FINISHING</small>			THIRD ANGLE PROJECTION	SHEET 4 OF 4	PART NUMBER MGS-UC2-X-X-X	REV 00