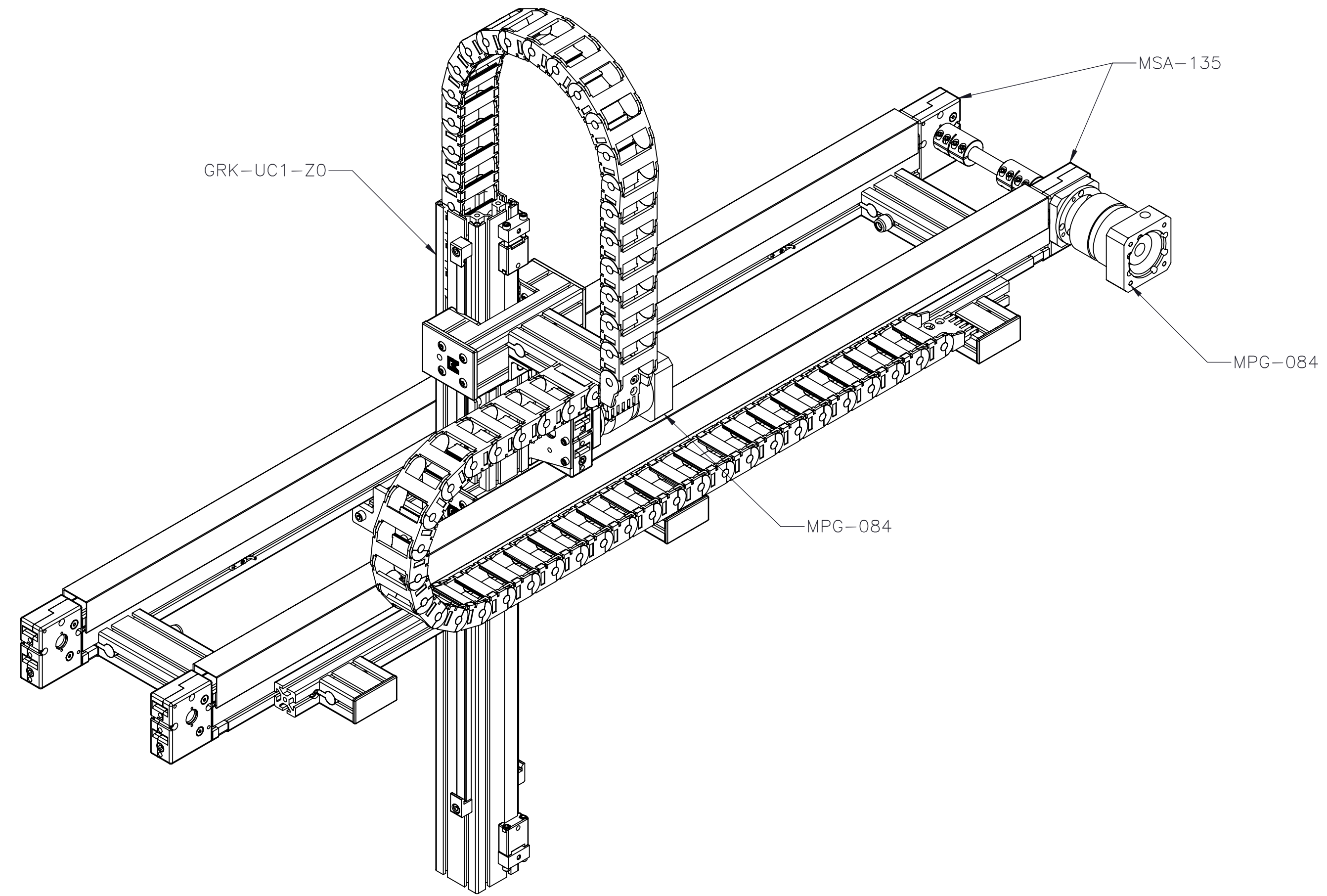



MGS-UC1 - - X -

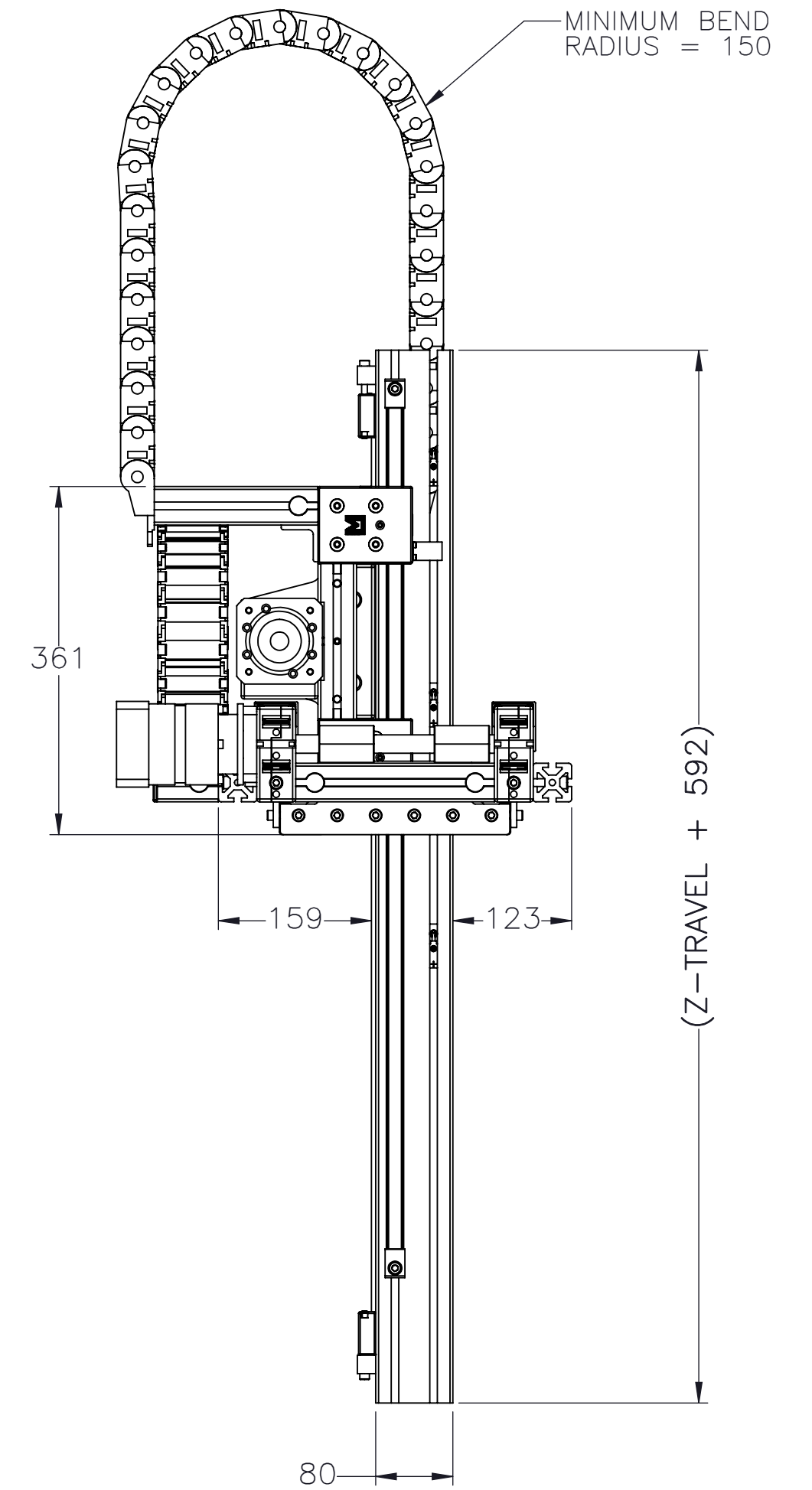
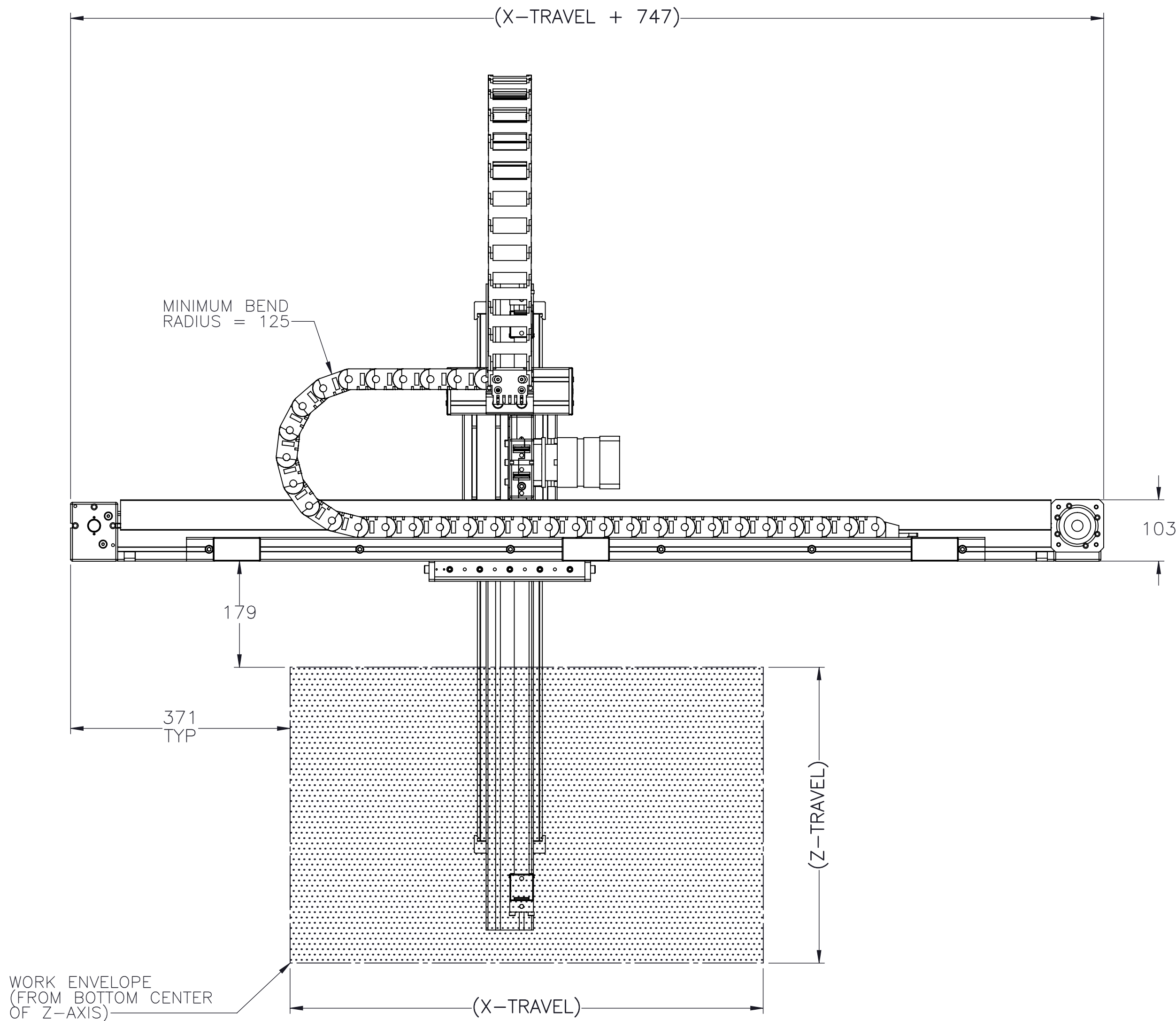
ENTER Z-AXIS TRAVEL
 TRAVEL IN INCREMENTS OF 250mm
 TRAVEL LIMITS: 250mm-1000mm

ENTER X-AXIS TRAVEL
 TRAVEL IN INCREMENTS OF 500mm
 TRAVEL LIMITS: 1000mm-5250mm




 MACRON DYNAMICS INC	DRAWN BY: JB DATE: 2/10/2016	MATERIAL:	TITLE: MACRON UC1 XZ GANTRY
	CHECKED BY: -- DATE: 2/11/2016		
	LAST SAVED BY: Blutinger DATE: 2/16/2016	FINISH:	
	UNLESS OTHERWISE SPECIFIED, DIMENSIONS ARE IN MILLIMETERS. TOLERANCES UNLESS NOTED OTHERWISE: .X ± .762 .XX ± .254 .XXX ± .127 ANG ± 0°30'		
THIS DRAWING IS THE PROPERTY OF MACRON DYNAMICS. ANY REPRODUCTIONS SHALL BE FOR QUOTATION, MANUFACTURING, OR PURCHASING PURPOSES ONLY. RELEASE OF DRAWINGS TO OTHER CONCERNS DOES NOT CONSTITUTE LICENSING IN ANY WAY. INFORMATION CONTAINED HEREIN IS PROPRIETARY AND CONFIDENTIAL.	SURFACE FINISH \checkmark	SCALE 1:1 SHEET SIZE C	
BREAK ALL SHARP EDGES DIMENSIONAL LIMITS APPLY AFTER FINISHING THIRD ANGLE PROJECTION	SHEET 1 OF 4	PART NUMBER MGS-UC1-X-X-X	REV 00

GANTRY FOOTPRINT



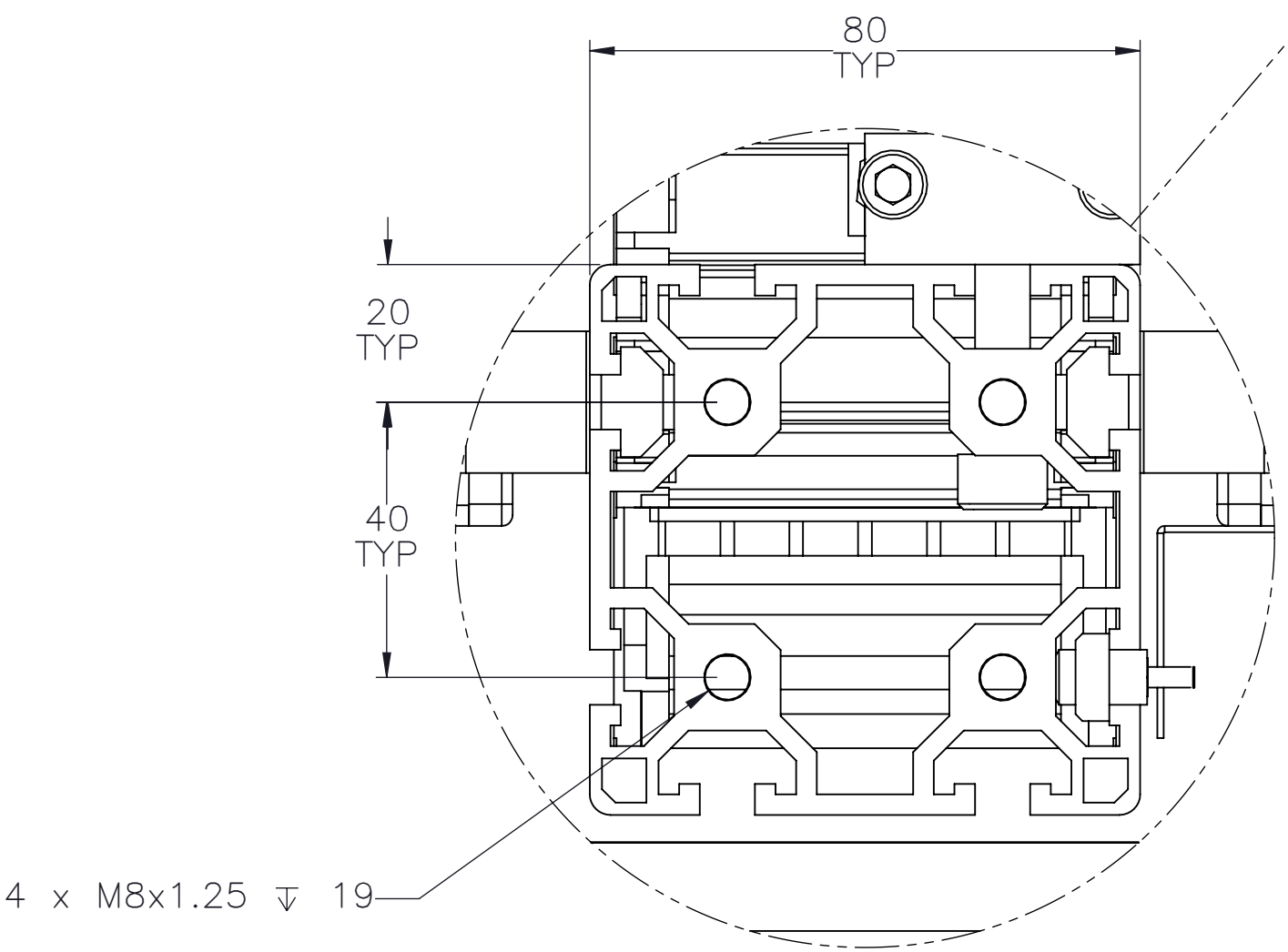
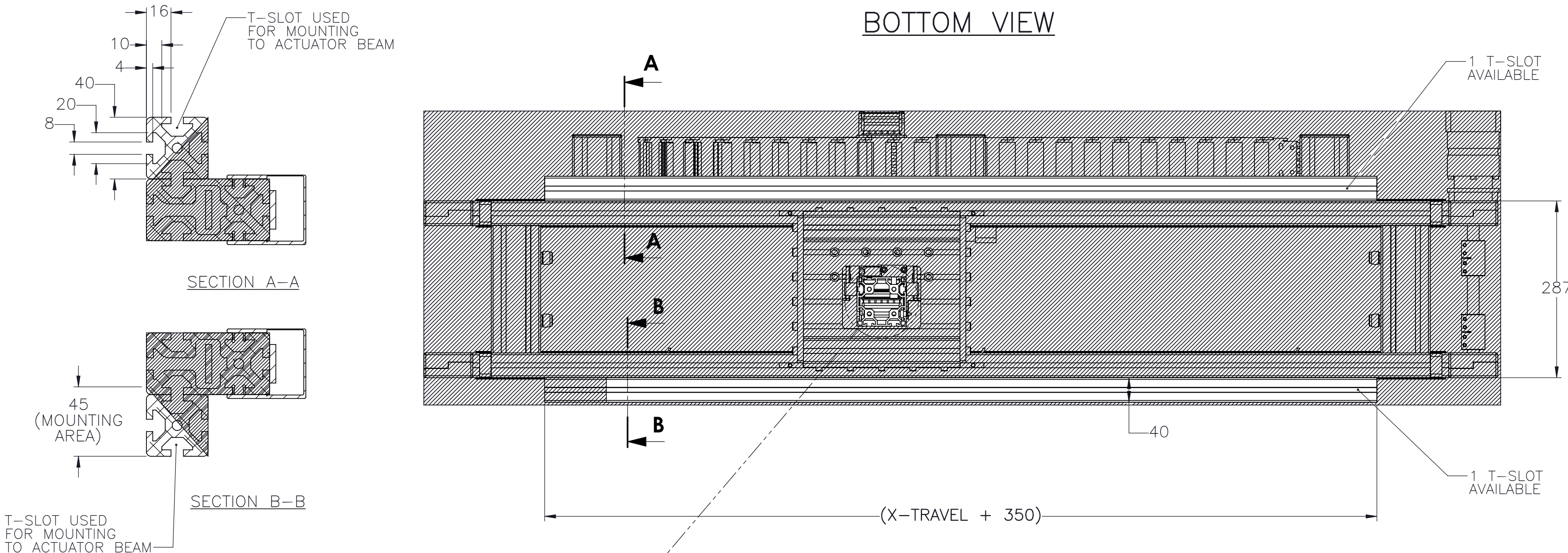
MOUNTING NOTES

X-TRAVELS (mm)	MAX PAYLOAD (lbs)	MOUNTING STYLE
1000	150	X-AXIS BEAMS CAN ONLY BE MOUNTED AT ENDS
1500	100	
2000	58	
2500	20	
3000 - 5250	300	X-AXIS BEAMS MUST BE SUPPORTED FOR WHOLE LENGTH


 MACRON DYNAMICS INC <small>THIS DRAWING IS THE PROPERTY OF MACRON DYNAMICS. ANY REPRODUCTIONS SHALL BE FOR QUOTATION, MANUFACTURING, OR PURCHASING PURPOSES ONLY. RELEASE OF DRAWINGS TO OTHER CONCERNS DOES NOT CONSTITUTE LICENSING IN ANY WAY. INFORMATION CONTAINED HEREIN IS PROPRIETARY AND CONFIDENTIAL.</small>	DRAWN BY: JB CHECKED BY: -- LAST SAVED BY: Blutinger	DATE: 2/10/2016 DATE: 2/11/2016 DATE: 2/16/2016	MATERIAL:	TITLE: MACRON UC1 XZ GANTRY	
	UNLESS OTHERWISE SPECIFIED, DIMENSIONS ARE IN INCHES. TOLERANCES UNLESS NOTED OTHERWISE:	.X ± .03 .XX ± .010 .XXX ± .005 ANG ± 0.30°	FINISH:	SCALE 1:1 SHEET SIZE C	REV
	SURFACE FINISH 63	BREAK ALL SHARP EDGES DIMENSIONAL LIMITS APPLY AFTER FINISHING THIRD ANGLE PROJECTION	SHEET 2 OF 4	PART NUMBER MGS-UC1-X-X-X	00

GANTRY MOUNTING FEATURES

BOTTOM VIEW



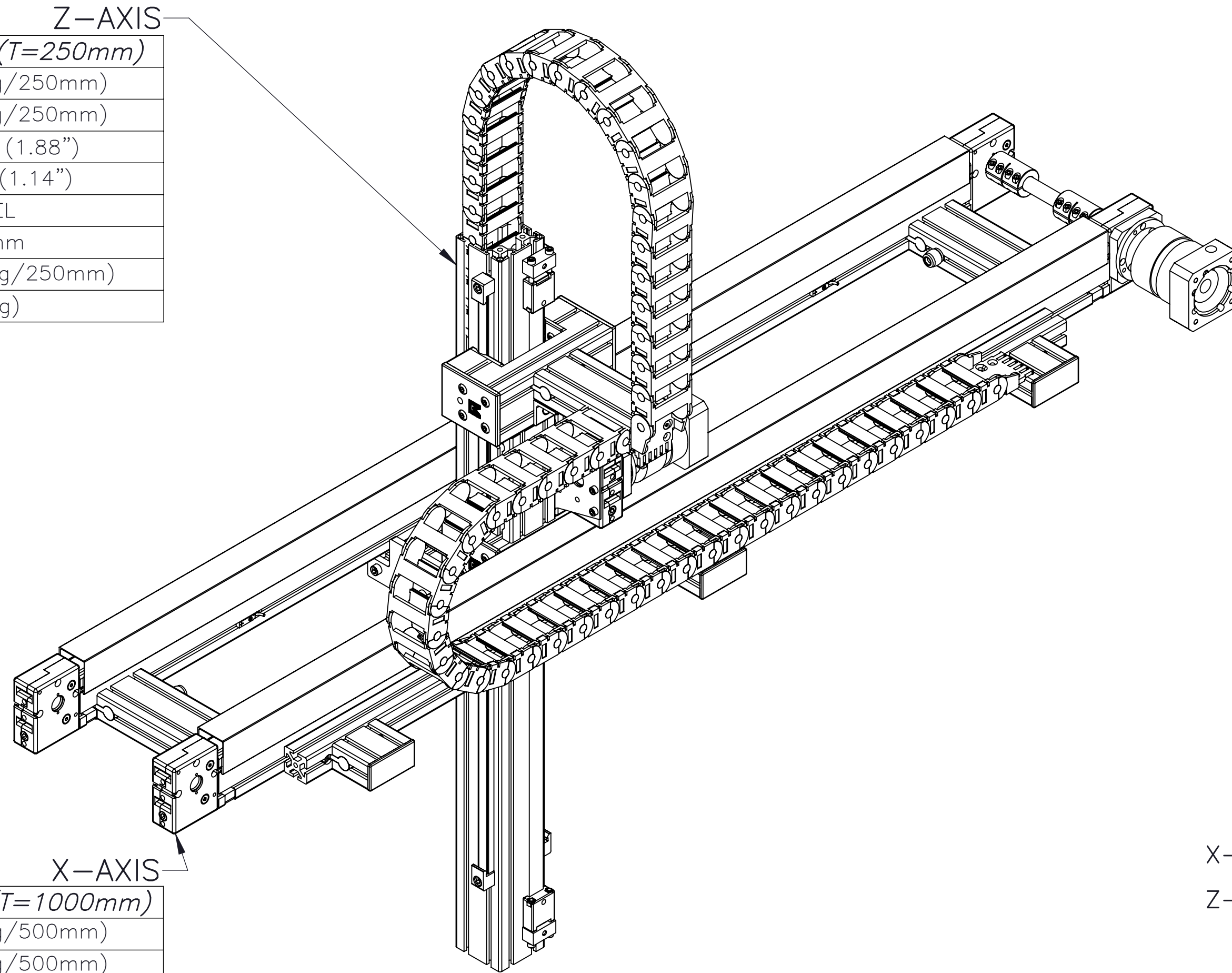
DETAIL C

 MACRON DYNAMICS INC	DRAWN BY: JB CHECKED BY: -- LAST SAVED BY: Blutinger	DATE: 2/10/2016 DATE: 2/11/2016 DATE: 2/16/2016	MATERIAL:	TITLE: MACRON UC1 XZ GANTRY	
	UNLESS OTHERWISE SPECIFIED, DIMENSIONS ARE IN INCHES. TOLERANCES UNLESS NOTED OTHERWISE:		FINISH:	SCALE 1:1 SHEET SIZE C	
	SURFACE FINISH 63		SHEET 3 OF 4	PART NUMBER MGS-UC1-X-X-X	REV 00
	THIS DRAWING IS THE PROPERTY OF MACRON DYNAMICS. ANY REPRODUCTIONS SHALL BE FOR QUOTATION, MANUFACTURING, OR PURCHASING PURPOSES ONLY. RELEASE OF DRAWINGS TO OTHER CONCERNS DOES NOT CONSTITUTE LICENSING IN ANY WAY. INFORMATION CONTAINED HEREIN IS PROPRIETARY AND CONFIDENTIAL.		BREAK ALL SHARP EDGES DIMENSIONAL LIMITS APPLY AFTER FINISHING THIRD ANGLE PROJECTION		

MOTOR SIZING INFORMATION

(INCREMENTAL ADDERS REFER TO MASS PER TRAVEL LENGTH)

PROPERTY	BASE VALUE (T=250mm)
MOVING MASS	9.5kg(+2.1kg/250mm)
BELT MASS	0.3kg(+0.1kg/250mm)
PULLEY PITCH ϕ	47.75mm (1.88")
PULLEY WIDTH	28.9mm (1.14")
PULLEY MATERIAL	STEEL
TRAVEL PER REV	150mm
*SYSTEM MASS	18.2kg(+2.4kg/250mm)
*INCLUDES MPG-084 (2.3kg)	




PROPERTY	BASE VALUE (T=1000mm)
**MOVING MASS	7.5kg(+0.2kg/500mm)
BELT MASS	2.1kg(+0.6kg/500mm)
PULLEY PITCH ϕ	47.75mm (1.88")
PULLEY WIDTH	28.9mm (1.14")
PULLEY MATERIAL	STEEL
CONN SHAFT LENGTH	118.18mm (4.65")
CONN SHAFT ϕ	19.05mm (.75")
CONN SHAFT MATERIAL	STEEL
TRAVEL PER REV	150mm
**ADD SYSTEM MASS OF Z-AXIS TO VALUE	

X-TRAVEL = _____ mm

Z-TRAVEL = _____ mm

Z-AXIS	MOVING MASS	$(Z-TRAVEL \times .0084) + 7.40 = \text{kg}$
	BELT MASS	$(Z-TRAVEL \times .0003) + 0.15 = \text{kg}$
	SYSTEM MASS {1}	$(Z-TRAVEL \times .0096) + 15.8 = \text{kg}$
X-AXIS	MOVING MASS	$(X-TRAVEL \times .0004) + 7.04 + \{1\} = \text{kg}$
	BELT MASS	$(X-TRAVEL \times .0012) + 0.87 = \text{kg}$

 MACRON DYNAMICS INC	DRAWN BY: JB CHECKED BY: -- LAST SAVED BY: Blutinger	DATE: 2/10/2016 DATE: 2/11/2016 DATE: 2/16/2016	MATERIAL:	TITLE: MACRON UC1 XZ GANTRY	
	UNLESS OTHERWISE SPECIFIED, DIMENSIONS ARE IN INCHES. TOLERANCES UNLESS NOTED OTHERWISE:		FINISH:	SCALE 1:1 SHEET SIZE C	
	SURFACE FINISH 63		BREAK ALL SHARP EDGES DIMENSIONAL LIMITS APPLY AFTER FINISHING		SHEET 4 OF 4 PART NUMBER MGS-UC1-X-X-X REV 00
	THIS DRAWING IS THE PROPERTY OF MACRON DYNAMICS. ANY REPRODUCTIONS SHALL BE FOR QUOTATION, MANUFACTURING, OR PURCHASING PURPOSES ONLY. RELEASE OF DRAWINGS TO OTHER CONCERNS DOES NOT CONSTITUTE LICENSING IN ANY WAY. INFORMATION CONTAINED HEREIN IS PROPRIETARY AND CONFIDENTIAL.				