



MACRON DYNAMICS, INC.

PRODUCT
Datasheet

SPECIFICATIONS

Load Rating	0-288lbs
Ultimate Tensile Strength	1150lbs
Temperature Range	-20 C to +70 C (-4 F to +158 F)
Shipping Weight	0.75 lbs + 0.03lb/ft of belt
Belt Pitch	5mm

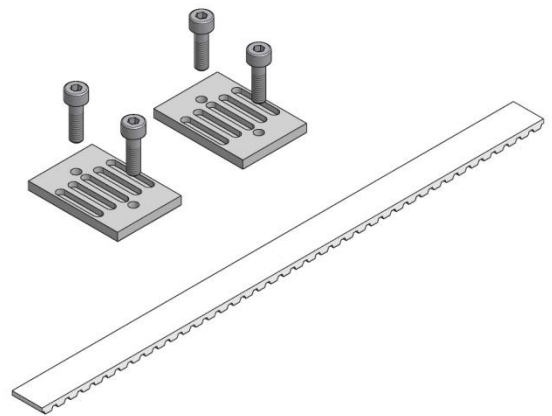
Drive Belt Kit

DBK-BC-__

Insert length per meter.
Ex. 5 meters = DBK-BC-05

MATERIALS

Belt	Steel Reinforced Polyurethane
Belt Clamp	Steel
Screws	Steel

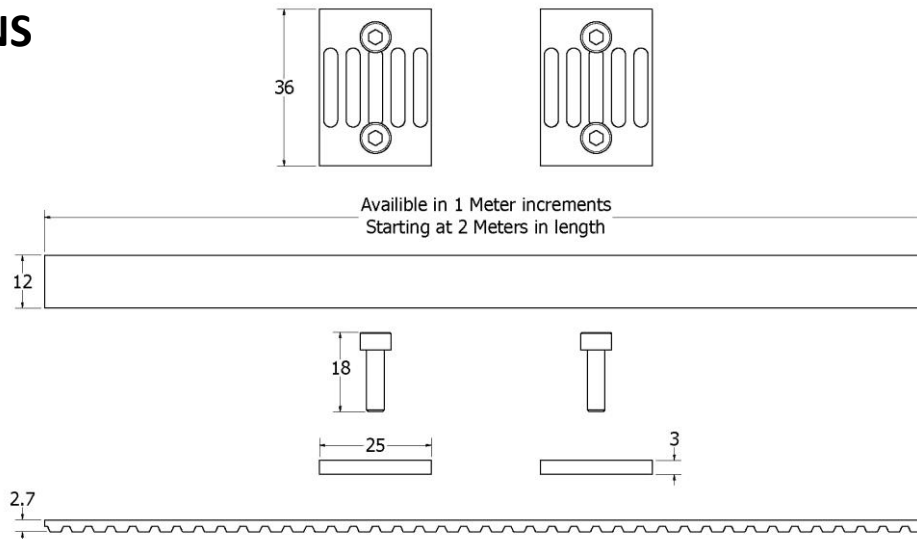


PARTS BREAKDOWN

Description	Qty/Kit
Drive Belt	1
Belt Clamp	2
M4 Socket Head Cap Screw	4

$$\text{BELT LENGTH} = (\text{BEAM LENGTH} \times 2) + .3\text{m}$$

DIMENSIONS



MACRON DYNAMICS, INC.
100 Phyllis Drive
Croydon, PA 19021

P: 215-443-8888
F: 215-443-0981
macron@macrondynamics.com

www.macrondynamics.com

Rev 01



MACRON DYNAMICS, INC.

PRODUCT
Datasheet

Belt Installation Instructions



The tools you will need include a torque wrench (lb. in.), tensioning tool, M2 and a M3 allen wrench, and a flathead screwdriver.



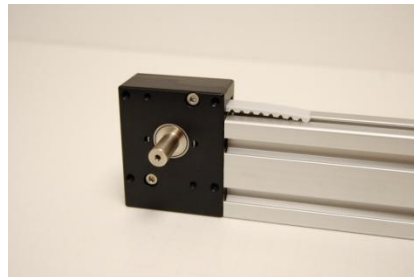
Insert the belt into the slot closest to the bottom.



Using the screwdriver coax the belt upwards. Then push the belt till it stops at the top.



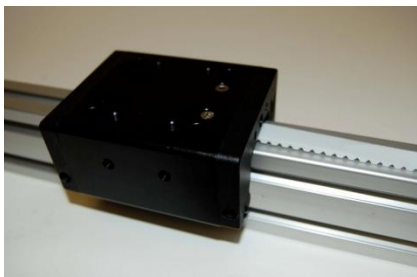
When the belt stops at the top, use the same method again with the screwdriver.



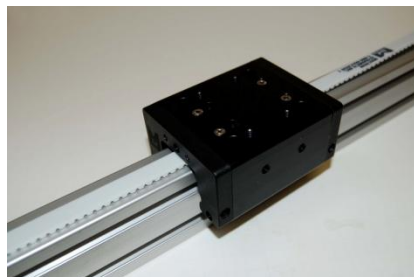
Once the belt becomes exposed, pull it till the slack in the belt comes tight.



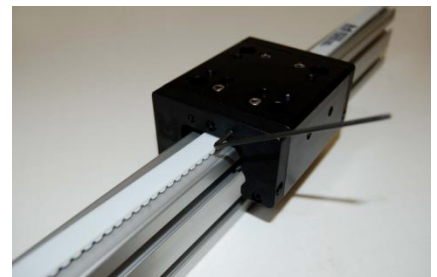
Place the belt clamp under the end of the belt so that the last tooth is in the first slot.



Move the cart over top the clamp and bolt in using the fixed holes. Be sure to have the fixed holes facing the drive side.



Repeat last two steps, except now use the variable holes. **DO NOT** tighten bolts all the way.



Tighten the set screws in the cart so that the belt becomes firm.

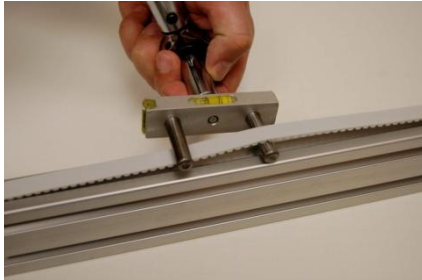
MACRON DYNAMICS, INC.
100 Phyllis Drive
Croydon, PA 19021

P: 215-443-8888
F: 215-443-0981
macron@macrondynamics.com

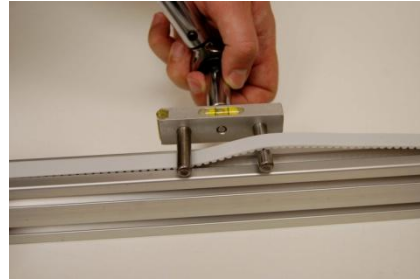


MACRON DYNAMICS, INC.

PRODUCT
Datasheet



Move the cart to the end of the actuator. Then place the tensioning tool at the middle of the belt.



Set the wrench to the correct torque setting, adjust belt to achieve level position at the recommended torque.