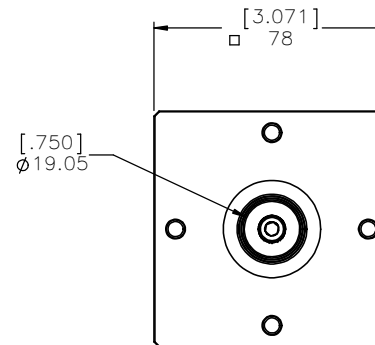
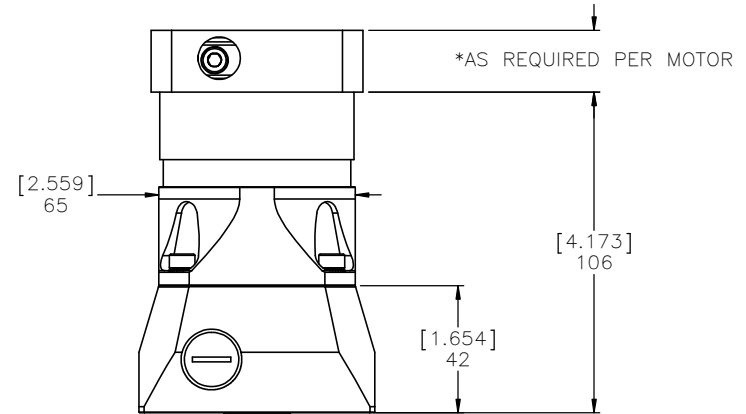
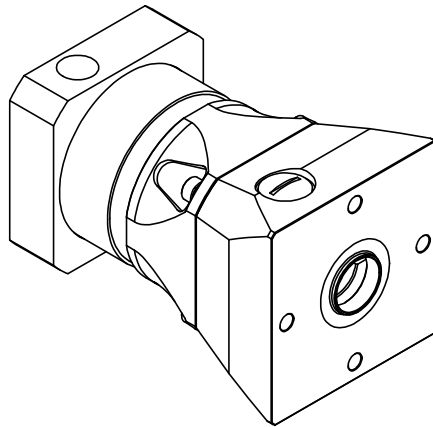


REVISION HISTORY			
REV.	DESCRIPTION	DATE	REVISED BY:


MPG-064-XXX
SINGLE STAGE HOLLOW OUTPUT PLANETARY GEARBOX
0.750" BORE
(XXX = GEARBOX RATIO)



NOTES:

- 1.) MOTOR **MANUFACTURER AND MODEL NUMBER** REQUIRED TO PROPERLY SIZE THE MOTOR ADAPTOR PLATE. MAXIMUM MOTOR INPUT SHAFT DIAMETER IS 14mm.
- 2.) ADAPTOR PLATE SIZE WILL VARY BASED ON MOTOR SPECIFIED. OVERALL DIMENSIONS AND PLATE THICKNESS WILL BE DIFFERENT FROM VISUAL REPRESENTATION ABOVE
- 3.) MOTOR FLANGE BOLT CIRCLE PATTERN AND HOLE DIAMETER ALONG WITH MOTOR SHAFT DIAMETER AND LENGTH WILL DETERMINE THE FINAL SIZE OF THE ADAPTOR PLATE
- 4.) MACRON DYNAMICS, INC. MAKES EVERY EFFORT TO MATCH MOTOR DIMENSIONS TO MOTOR MANUFACTURER'S SPECIFICATIONS. THESE MANUFACTURER'S SPECIFICATIONS CAN CHANGE FROM TIME TO TIME WITHOUT NOTICE. MACRON IS NOT RESPONSIBLE FOR ADAPTOR THAT DO NOT MATE WITH THE MOTORS IF REFERENCE DIMENSIONS HAVE CHANGED OR IF THE USER CHANGES MOTOR MODELS AFTER PURCHASE

GEARBOX RATIO	3:1	10:1	5:1	7:1
MPG PART NUMBER SUFFIX	003	010	005	007
NOMINAL OUTPUT TORQUE – Nm (lb-in)	14 (124)	14 (124)	26 (230)	26 (230)
MAXIMUM ACCELERATION TORQUE – Nm (lb-in)	25 (221)	25 (221)	40 (354)	40 (354)
NOMINAL INPUT SPEED – RPM	3500	3500	3500	3500
MAXIMUM INPUT SPEED – RPM	6000	6000	6000	6000
STANDARD OUTPUT BACKLASH – arcmin	<10	<10	<10	<10
WEIGHT – kg (lb)	1 (2.2)	1 (2.2)	1 (2.2)	1 (2.2)
MASS MOMENT OF INERTIA – kg/cm ² (lb-in ²)	.45 (0.154)	.34 (0.116)	.36 (0.123)	.35 (0.120)
EFFICIENCY AT LOAD	92%	92%	92%	92%
NO LOAD TORQUE – Nm (lb-in)	0.5 (4.4)	0.5 (4.4)	0.5 (4.4)	0.5 (4.4)

 MACRON DYNAMICS INC	DRAWN BY: TH DATE: 9/18/2018 CHECKED BY: -- DATE: DD/MM/YYYY LAST SAVED BY: TH DATE: 9/24/2018	MATERIAL: FINISH:	TITLE: MACRON GEARBOX TO 40/25 PULLEY	
	UNLESS OTHERWISE SPECIFIED, DIMENSIONS ARE IN MILLIMETERS. TOLERANCES UNLESS NOTED OTHERWISE:	.XX ± .762 .XX ± .254 .XXX ± .127 ANG ± 0°30'	SCALE: 1:1 SHEET SIZE: C	SHEET: 1 OF 1 PART NUMBER: MPG-064-XXX REV: 00
	THIS DRAWING IS THE PROPERTY OF MACRON DYNAMICS. ANY REPRODUCTIONS SHALL BE FOR QUOTATION, MANUFACTURING, OR PURCHASING PURPOSES ONLY. RELEASE OF DRAWINGS TO OTHER CONCERNS DOES NOT CONSTITUTE LICENSING IN ANY WAY. INFORMATION CONTAINED HEREIN IS PROPRIETARY AND CONFIDENTIAL.	SURFACE FINISH: <input checked="" type="checkbox"/> BREAK ALL SHARP EDGES DIMENSIONAL LIMITS APPLY AFTER FINISHING THIRD ANGLE PROJECTION		