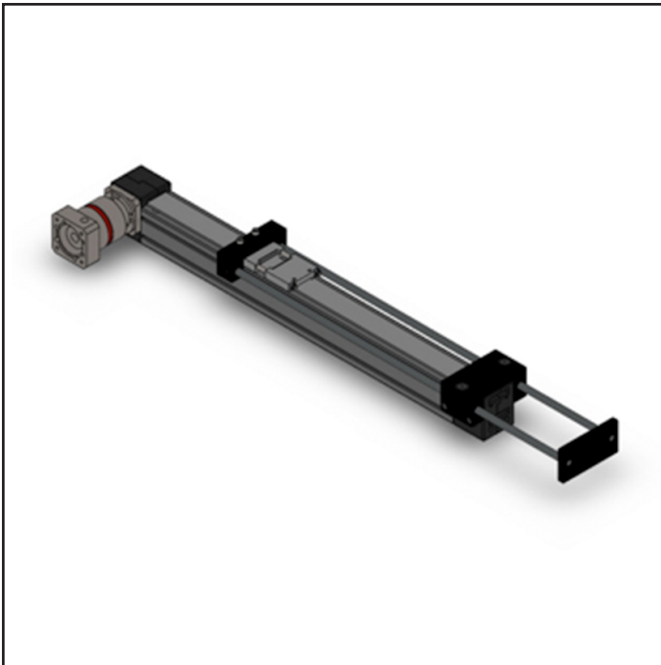




SPECIALTY ACTUATORS > THRUSTER > MSA-BT5

MSA-BT5



MSA-BT5 OPTIONS

SHAFT TYPE

SINGLE

DOUBLE

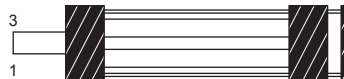
DRIVE SHAFT LOCATION

1

2

3

4



TRAVELS

Min 150 mm - Max 1500 mm in 25 mm increments.

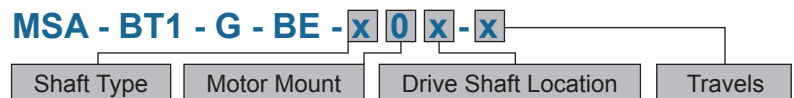
OPTIONS FOR:

Gearbox

Sensors

Motor Mounting

HOW TO BUILD YOUR MSA-BT5



Macron Solutions Since 1987

MACRON DYNAMICS, INC.
100 Phyllis Drive
Croydon, PA 19021

1-800-MACRON-1 (1-800-622-7661)
Phone: 267-557-3590
Fax: 215-443-0981

© 2017 MACRON DYNAMICS, INC.

Macron Guarantee

All Macron actuators and belt drives are covered by our
1-Year Warranty



SPECIALTY ACTUATORS > THRUSTER > MSA-BT5

MSA-BT5

SPECIFICATIONS

Specifications

Motion	Horizontal or Vertical
Maximum Thrust Force – lbs – [N]	1000 [455]
Minimum Travel – mm	150
Maximum Travel – mm	1500
Travel Increment – mm	25
Maximum Speed – mm/s	2000
Maximum Acceleration – G's	5
Repeatability – mm	+/- 0.025
Positional Accuracy – mm/m of travel	+/- 0.4
Minimum Travel Unit – mm [in]	NA

Features

- Durable, cost-effective alternative for pneumatic and hydraulic cylinders and expensive rod style actuators
- Zero backlash belt to pulley design
- Extruded base profile allows multiple side mounting and attachment of elements using T-slot nut fasteners
- Designed for fast, easy replacement of spare parts
- Open design does not retain contaminants and debris

Macron Solutions Since 1987

MACRON DYNAMICS, INC.
100 Phyllis Drive
Croydon, PA 19021

1-800-MACRON-1 (1-800-622-7661)
Phone: 267-557-3590
Fax: 215-443-0981

© 2017 MACRON DYNAMICS, INC.

Macron Guarantee

All Macron actuators and belt drives are covered by our
1-Year Warranty