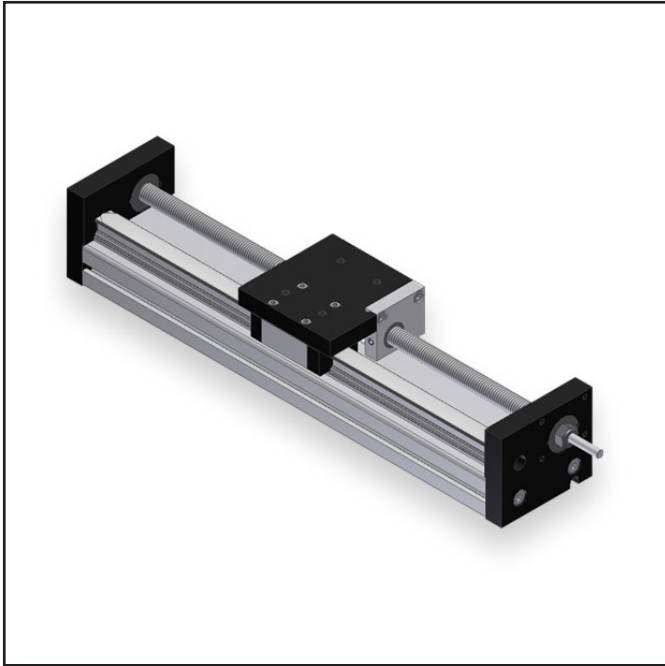




SCREW DRIVEN ACTUATORS > MSA-SRT ACTUATOR

# MSA-SRT ACTUATOR



## MSA-SRT OPTIONS

### SCREW PITCH (INCHES)

- 0.2
- 0.5
- 1.0
- Custom

### STANDARD TRAVELS (MM)

- 160
- 320
- 480
- 640
- Custom

### OPTIONS FOR:

- Controls
- Motor
- Gearbox

### HOW TO BUILD YOUR MSA-DRT:



### Features

- Commercial grade actuator with ball screw drive
- Extruded base profile allows multiple side mounting and attachment of elements using T-nut fasteners
- Sealed linear profile rail and bearing guidance
- Motor adaptors or MPG gearboxes are available accessories

### Macron Solutions Since 1987

MACRON DYNAMICS, INC.  
 100 Phyllis Drive  
 Croydon, PA 19021

1-800-MACRON-1 (1-800-622-7661)  
 Phone: 267-557-3590  
 Fax: 215-443-0981

© 2014 MACRON DYNAMICS, INC.

### Macron Guarantee

All Macron actuators and belt drives are covered by our  
 1-Year Warranty



SCREW DRIVEN ACTUATORS > MSA-SRT ACTUATOR

# MSA-SRT ACTUATOR

## SPECIFICATIONS

Specifications	
Screw Pitch	0.2 in.
Nut Type	Ball Screw
Maximum Speed	300 in./min. (0.2 in.), 600 in./min. (0.5 in.), 600 in./min. (1.0 in.)
Maximum Load	50 lbs.
Repeatability	+/- 0.005 in.
Moment Load	25# at 6 mm
Efficiency	90%
Motor Sizing Information	
Weight of Cart	1.2 lbs.
Travel per Revolution	0.25 in./min. (0.2 in.), 0.5 in./min. (0.5 in.), 1.0 in./min. (1.0 in.)
Torque to Raise 1lb.	0.035 in./min. (0.2 in.), 0.088 in./min. (0.5 in.), 0.177 in./min. (1.0 in.)

## SPECIFICATIONS

Weight	
Weight - lbs. w/motor adaptor	9.0 lbs. (319 mm), 11.0 lbs. (479 mm), 14.0 lbs. (639 mm), 17.0 lbs. (799 mm)
Travels	
Standard Travels	160 to 640 mm

### Macron Solutions Since 1987

MACRON DYNAMICS, INC.      1-800-MACRON-1 (1-800-622-7661)  
 100 Phyllis Drive      Phone: 267-557-3590  
 Croydon, PA 19021      Fax: 215-443-0981  
 © 2014 MACRON DYNAMICS, INC.

### Macron Guarantee

All Macron actuators and belt drives are covered by our  
 1-Year Warranty